

Arklow Wind

Port of Registry	Arklow	Yard	Ferus Smit 448
Call Sign	EIUX5	Year of Build	2019
Sat Phone	+353 402 44825	Class	Bureau Veritas (BV)
Email	awind@arkship.ie	Class Notation	I, *Hull *Mach, Unrestricted navigation, General Cargo Ship, *AUT-UMS, MON-SHAFT, ALP, INWATER SURVEY, ICE class 1A (finnish/Swedish)
Inmarsat-C (Telex)	425000597@stratosmobile.com	Owner/Managers P & I Club	Arklow Shipping, North Quay, Arklow, County Wicklow North of England P & I
GSM telephone	+353 87 6421875	Class No.	31789F
		Official No.	405000
		IMO No.	9818943
		MMSI No.	250005461



Principal Particulars

Arklow Wave Sister Vessel

Length OA	149.50m
Length BP	145.50m
Breadth Mld	19.25m
Depth Mld	12.00m
Summer Load Draft Mld	8.59m
Summer Deadweight	16861t
Winter Load Draft	8.41m
Winter Deadweight	16315.7t
GT	9999t
NT	5155t
At mean ballast draft	4.7m
Min. airdraft	28.80m
min. coaming ht above waterline	8.80m
Ballast	6965m ³
Ballast Rate per Pump (x 2)	450m ³
Fuel (90%)	350m ³
Diesel (90%)	170m ³
Fresh Water	60m ³

Hold Capacities

	Grain m ³	ft ³
Hold 1	7540	266275
Hold 2	12176.7	430,020
Total	19716.7	696295

Hatch Dimensions

Hatch 1	42.0m x 16.05m x 11.8m
Hatch 2	64.0mx 16.05m x 11.8m

Mechanical Ventilation

6 Changes/hr

Max Load Tank top
20t/m²

Bulkheads 2 Moveable with 9 positions

EQUIPMENT

	Maker
Reduction Gearbox	Keller
Pitch Propeller	Berg
Ballast Pumps	Azcue
Ballast pump with BWTS	Headway
HFO Fuel Pump	Kral
FO separator	Westfalia
Go Separator	Westfalia
LO system	Westfalia
Dehumidifier for Holds	

Detail

Main Engine:

Maker

MAK 8m32C

Output

MCR 3840kw

Auxiliaries:

Shaft Generator	Yanmar	750kw
Diesel Generators	Yanmar	250kw, 400v 50hz
Harbour Emergency Generator	Yanmar	100kw , 400v , 50hz

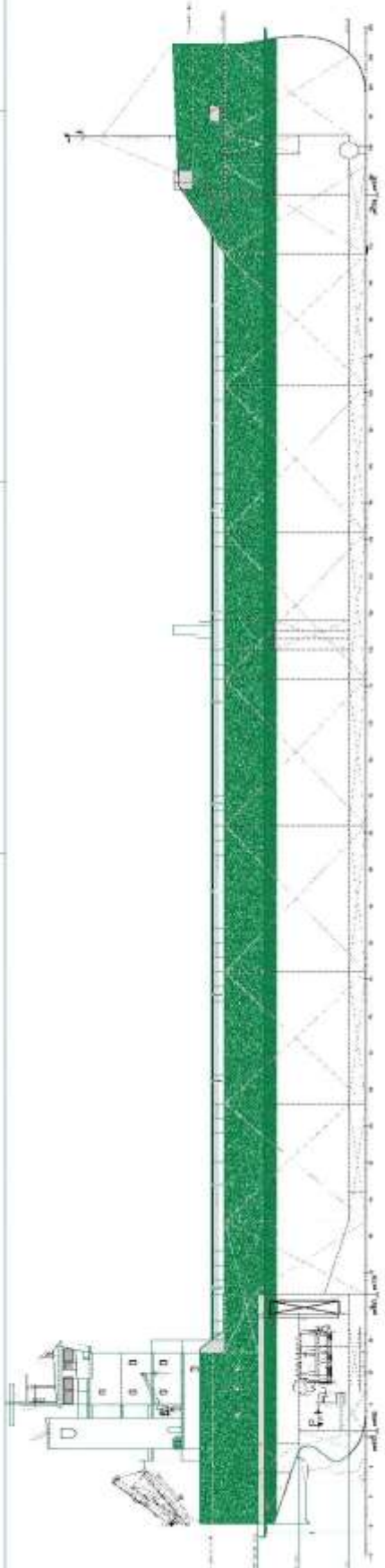
Speed & Consumption Ballast

abt 13.5kts on abt 17t IFO 380

Please read above figures as MDO in SECA Zones

02.04.2019

E. & O. E



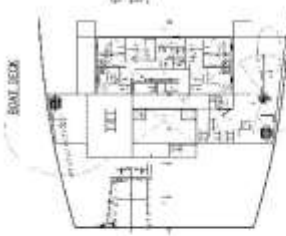
CLOSE SECTION



ADMINISTRATION DECK



FORENOON ENGINE ROOM



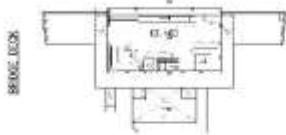
BOAT DECK



OFFICERS DECK



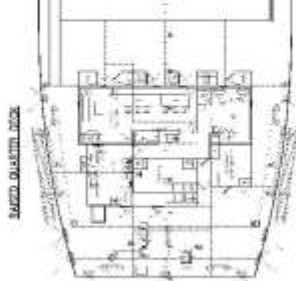
DAY ROOM DECK



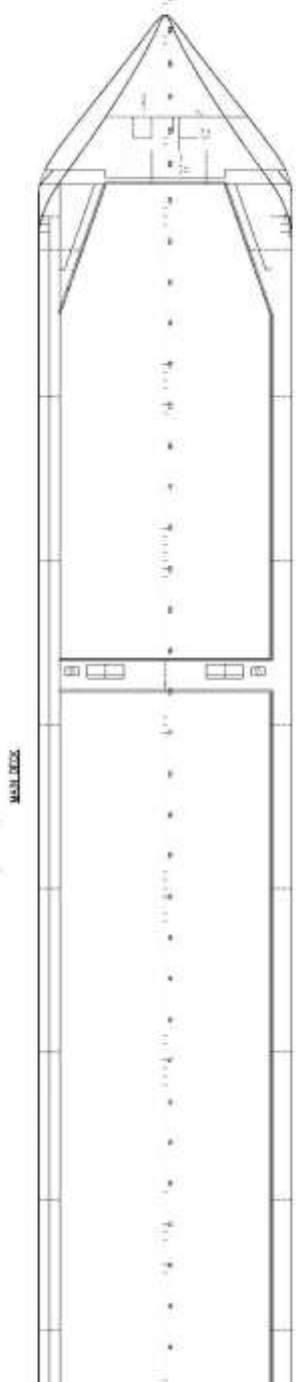
BRIDGE DECK



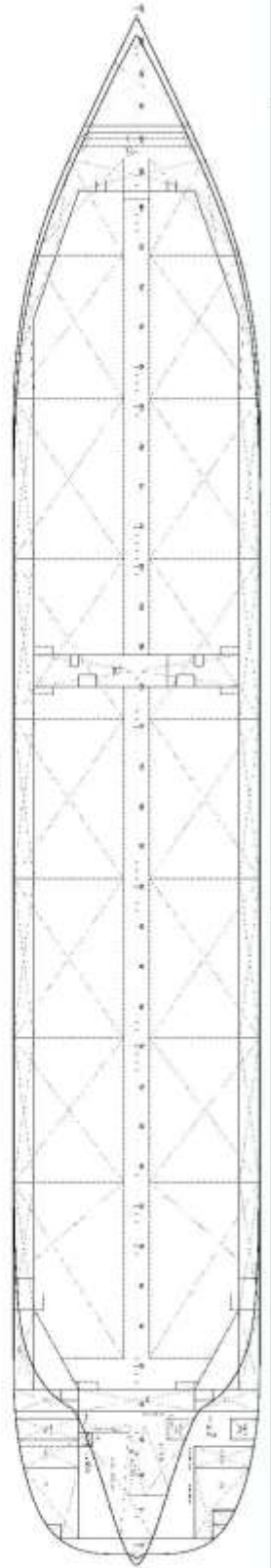
FORECASTLE DECK



MAIN DECK



MAIN DECK



GENERAL PARTICULARS

Length 110
 Breadth 22
 Draught 10
 Displacement 10000
 Speed 15
 Power 10000
 Year 1910

CLASSIFICATION

Class Yacht
 Type 10000
 Speed 15
 Power 10000

NO.	DESCRIPTION	DATE
1	DESIGNED	1910
2	CONSTRUCTED	1910
3	REPAIRED	1910
4	REPAIRED	1910
5	REPAIRED	1910
6	REPAIRED	1910
7	REPAIRED	1910
8	REPAIRED	1910
9	REPAIRED	1910
10	REPAIRED	1910

SHIP'S PARTICULARS

NAME
 TYPE
 BUILDING YARD
 YEAR

GENERAL ARRANGEMENT