

M.V. Arklow Cliff



Port of Registry	Arklow	Yard	Scheepswerf Ferus Smit NV (Yard No: 428)
Call Sign	EISS5	Year of Build	2017
IMO No.	9757125	Class	Bureau Veritas
MMSI No.	250004612	Class Notation	I + HULL + MACH, ICE CLASS FINNISH 1A, GENERAL CARGO SHIP, UNRESTRICTED NAVIGATION
Sat Phone	+31 85 666 1264		
Inmarsat-C (Telex)	(+581) 425000478	Class No:	29100H
Email	acliff@aslships.com	Official No:	404993
GSM tel (Irish)	+353 (0) 871601988		



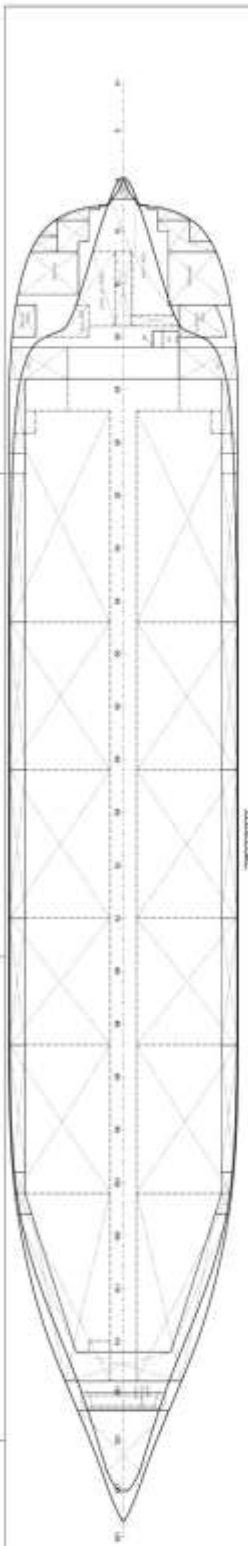
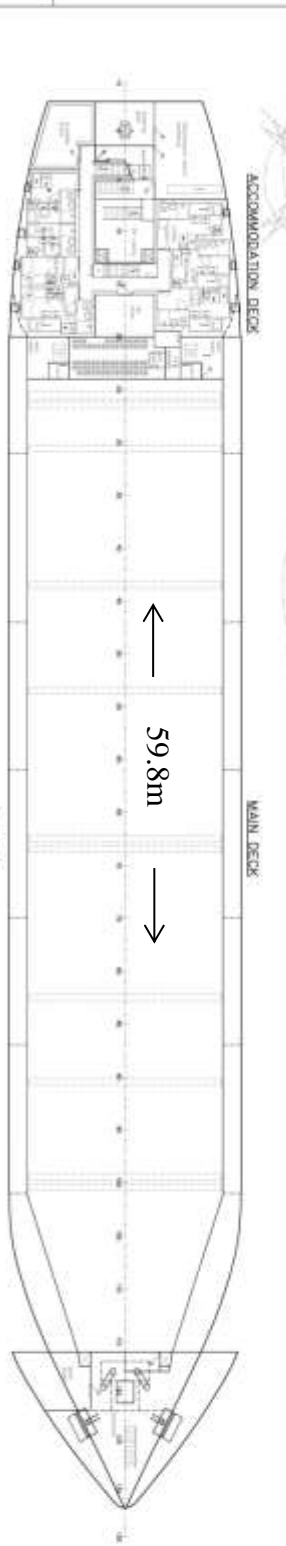
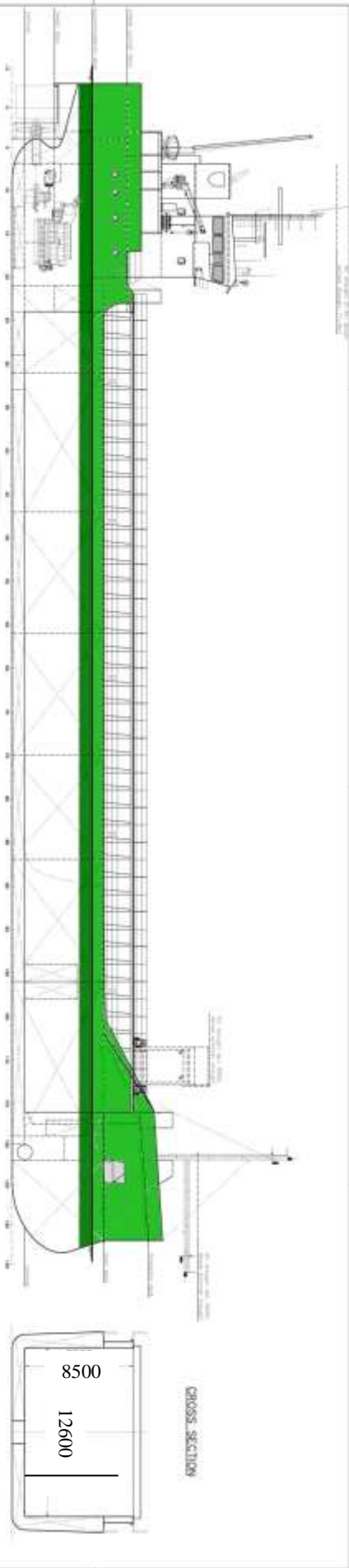
Principal Particulars

Length OA	87.40m	Hold Capacity: Grain & Bale	Main Engine:
Length BP	84.99m	(incl. B/H) 215614.22ft ³ /6105.80m ³	MAK 6M25 1740kW with gearbox and controllable pitch propeller
Breadth Mid	14.99m	Portable bulkheads (2) may be placed in 11 positions for cargo separation	Speed: abt. 11 knots
Breadth Ext	15.20m	Hatches: pontoon system	Consumption: abt. 7.5tons HFO/MGO per day
Depth Mid	7.12m	59.8m x 12.6m	Engine room: bulkhead A60 insulated
Summer Load Draft	6.26m	Max. hatch top loading 1.75t/m ²	Hold: CO ₂ fire extinguishing system
Min. airdraft is at max. ballast draft is	21.7m	Hold Dimensions	Certified for the carriage of dangerous goods
min. coaming height above waterline	5.36m	59.8m x 12.6m x 8.5m	Mechanical ventilation – 6 changes per hour in empty hold
GT	2999t	Parallel Hold	Water Ballast Treatment System
NT	1692t	48.86m x 12.6M x 8.5M	Bowthruster
Cargo Deadweight abt	5000t	Tank top strengthened for heavy cargoes.	1 x 275kw
Total Deadweight	5054t	Bottom strengthened for loading aground	
Fuel (HFO)	101m ³	Max. tank top loading 15t/m ²	
Fuel (GO)	96m ³		

27/07/2017

E. & O.E.

ARKLOW CLIFF



GENERAL PARTICULARS

Length o.a.	87.400 m
Breadth	14.980 m (Load Lim)
Depth	7.120 m (moulded)
Draught	6.235 m (moulded)
Deadweight	5085 DWT (dead)
Cargo Hold Volume	216500 cuft
Power	1740 kW (102hp)

SHIPYARD TRIBUS SHIP B.V.	
MARITIME DIVISION / SHIP	
GENERAL ARRANGEMENT	
NO. 1	11.02.18
NO. 2	12.02.18
NO. 3	13.02.18
NO. 4	14.02.18
NO. 5	15.02.18
NO. 6	16.02.18
NO. 7	17.02.18
NO. 8	18.02.18
NO. 9	19.02.18
NO. 10	20.02.18
NO. 11	21.02.18
NO. 12	22.02.18
NO. 13	23.02.18
NO. 14	24.02.18
NO. 15	25.02.18
NO. 16	26.02.18
NO. 17	27.02.18
NO. 18	28.02.18
NO. 19	29.02.18
NO. 20	30.02.18