

# M.V. Arklow Castle



|                    |                      |                |  |
|--------------------|----------------------|----------------|--|
| Port of Registry   | Arklow               | Yard           | Scheepswerf Ferus Smit NV (Yard No: 426)   |
| Call Sign          | EISF6                | Year of Build  | 2017   |
| IMO No.            | 9757101              | Class          | Bureau Veritas   |
| MMSI No.           | 250004289            | Class Notation | I + HULL + MACH, ICE CLASS FINNISH 1A, GENERAL CARGO SHIP, UNRESTRICTED NAVIGATION |
| Sat Phone          | +31856661249         |                |  |
| Inmarsat-C (Telex) | (+581) 425000425     | Class No:      | 29098F   |
| Email              | acastle@aslships.com | Official No:   | 404991   |
| GSM tel (Irish)    | +353 (0) 879856062   |                |  |



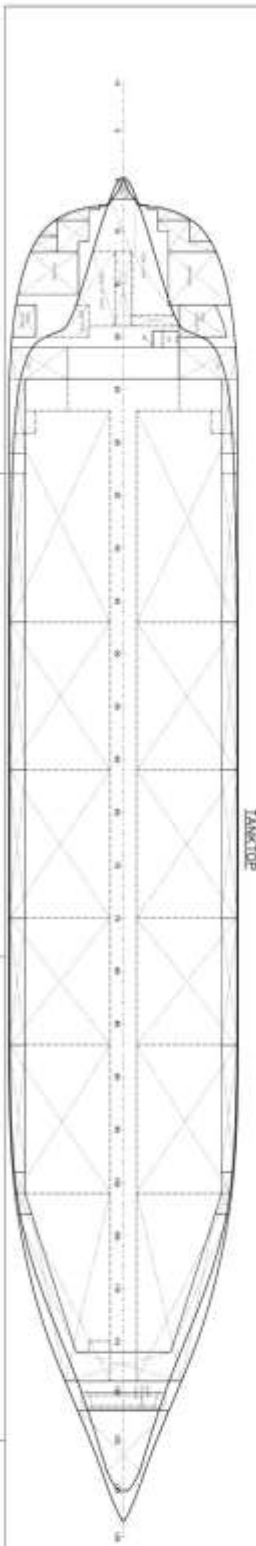
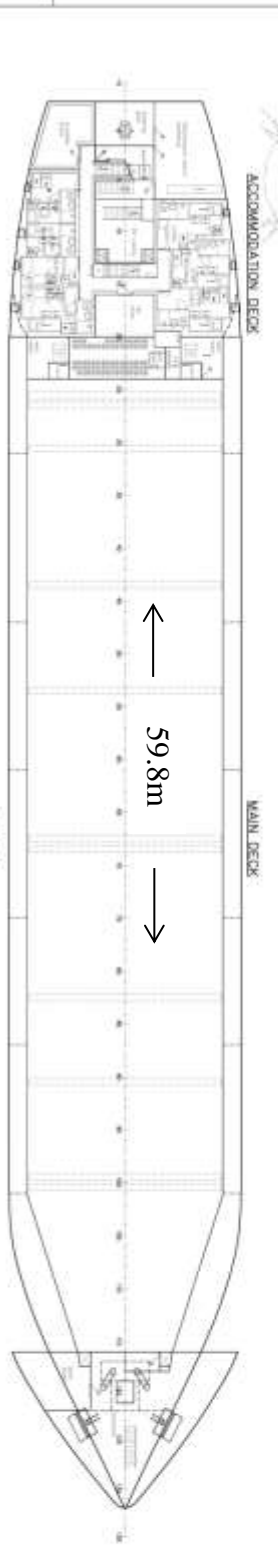
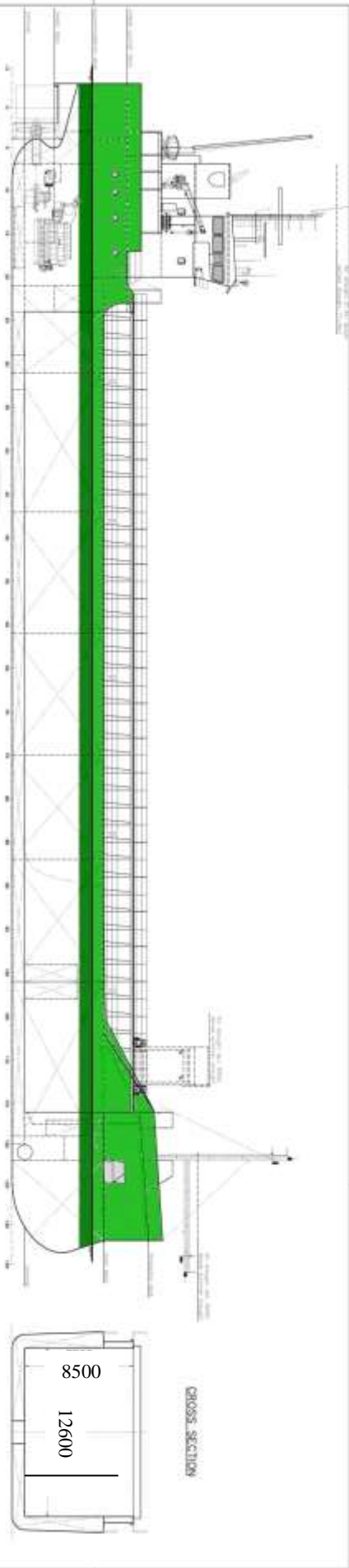
## Principal Particulars

|   |                   |   |  |
|---|-------------------|---|--|
| Length OA                                 | 87.40m            | <b>Hold Capacity: Grain &amp; Bale</b>                                    | <b>Main Engine:</b>  |
| Length BP                                 | 84.99m            | (incl. B/H) 215614.22ft <sup>3</sup> /6105.80m <sup>3</sup>               | MAK 6M25 1740kW with gearbox and controllable pitch propeller    |
| Breadth Mid                               | 14.99m            | Portable bulkheads (2) may be placed in 11 positions for cargo separation | <b>Speed:</b> abt. 11 knots                                      |
| Breadth Ext                               | 15.20m            | <b>Hatches:</b> pontoon system  | <b>Consumption:</b><br>abt. 7.5tons HFO/MGO per day              |
| Depth Mid                                 | 7.12m             | 59.8m x 12.6m   | <b>Engine room:</b> bulkhead A60 insulated                       |
| Summer Load Draft                         | 6.26m             | Max. hatch top loading 1.75t/m <sup>2</sup>                               | <b>Hold:</b> CO <sub>2</sub> fire extinguishing system           |
| Min. airdraft is at max. ballast draft is | 21.7m             | <b>Hold Dimensions</b>  | <b>Certified</b> for the carriage of dangerous goods             |
| min. coaming height above waterline       | 5.36m             | 59.8m x 12.6m x 8.5m  | <b>Mechanical ventilation</b> – 6 changes per hour in empty hold |
| GT  | 2999t             | Parallel Hold   | <b>Water Ballast Treatment System</b>                            |
| NT  | 1692t             | 48.86m x 12.6M x 8.5M   |  |
| Cargo Deadweight abt                      | 5000t             | Tank top strengthened for heavy cargoes.                                  |  |
| Total Deadweight                          | 5054t             | Bottom strengthened for loading aground                                   |  |
| Fuel (HFO)                                | 101m <sup>3</sup> | Max. tank top loading 15t/m <sup>2</sup>                                  |  |
| Fuel (GO)                                 | 96m <sup>3</sup>  |   |  |

07/04/2017

E. & O.E.

# ARKLOW CASTLE



## GENERAL PARTICULARS

|                   |                      |
|-------------------|----------------------|
| Length o.a.       | 87.400 m             |
| Breadth           | 14.980 m (Load Line) |
| Depth             | 7.120 m (moulded)    |
| Draught           | 6.235 m (moulded)    |
| Deadweight        | 5085 DWT (dead)      |
| Cargo Hold Volume | 216500 cuft          |
| Power             | 1740 kW (102hp)      |

|                           |            |
|---------------------------|------------|
| SHIPYARD TRIBUS SHIP B.V. |            |
| MARITIME DIVISION / SHIP  |            |
| GENERAL ARRANGEMENT       |            |
| Scale                     | 1:100      |
| Drawn                     | 12-01-2023 |
| Checked                   | 12-01-2023 |
| Approved                  | 12-01-2023 |