

M.V. Arklow Raider



Port of Registry Arklow
 Call Sign E I X S
 Sat Phone +870 7732 42086
 Email araider@arkship.ie
 IMO No. 9344540
 MMSI No. 250001268
 Inmarsat-C (Telex) +(581) 425000234
 +(581) 425000235
 GSM telephone (Irish) + 353 (87) 9213735

Yard Barkmeijer Stroobos, Holland
 Year of Build 2007
 Class Bureau Veritas
 Class Notation I + HULL + MACH + AUT-UMS
 MON-SHAFT STRENGTHBOTTOM
 Class No. 07983E
 Official No. 404061



© Bert van der Kuijl

Photo shows mv Arklow Raven (sister ship)

Photo courtesy of Bert van der Kuijl

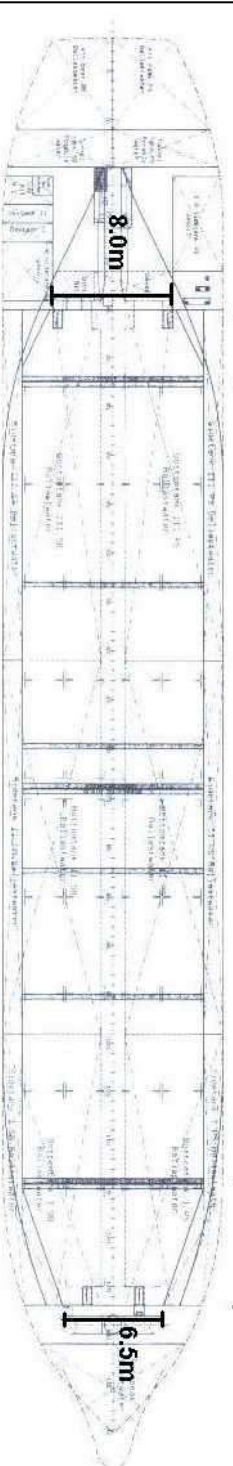
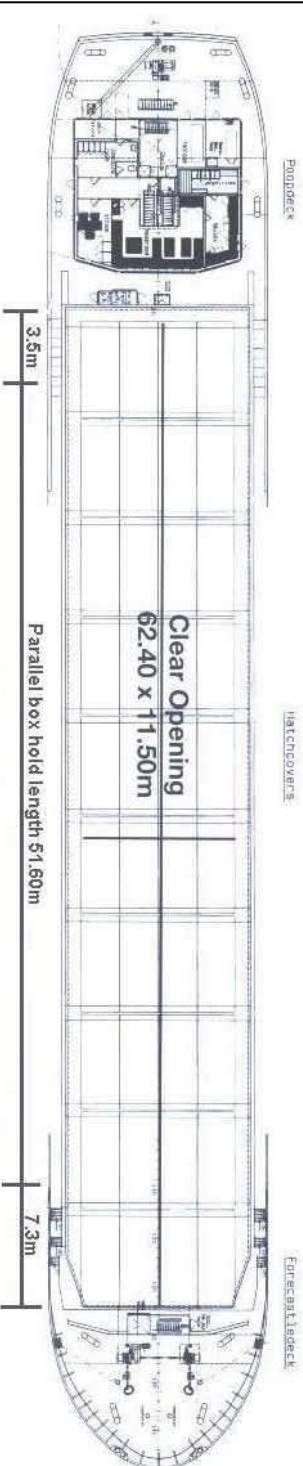
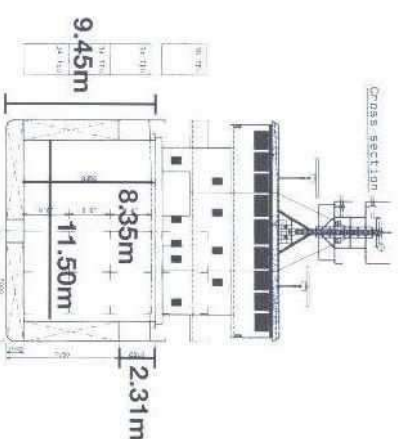
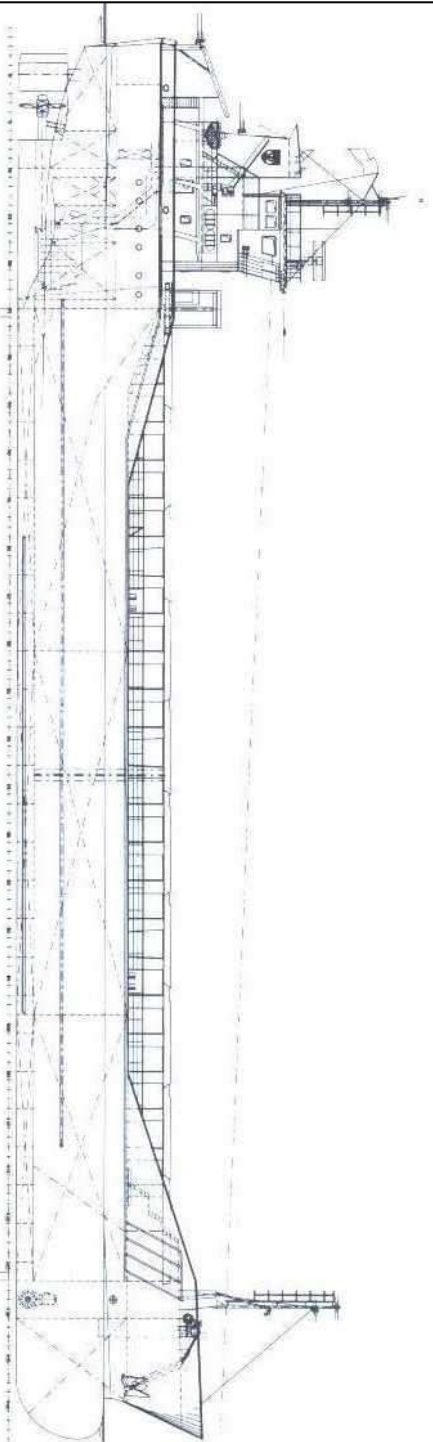
Principal Particulars

Length OA 89.99m
 Length BP 84.98m
 Breadth Mid 14.00m
 Breadth Ext 14.18m
 Depth Mid 7.15m
 Summer Load Draft 6.1m
 Min. airdraft is 20.60m
 at max. ballast draft of 3.8m
 min. coaming ht above waterline 5.7m
 GT 2999
 NT 1639
 Displacement 6965t
 Total Deadweight 4933t
 Ballast 1839m³
 Fuel – HFO 150.52m³
 Fuel – GO 36.42m³
 Fresh Water 88m³
 Lub Oil 8m³

Hold Capacity: Grain & Bale
 Incl. bulkheads 207391 ft³/5873 m³
 B/H stowed midships 206541 ft³/5849 m³
 Portable bulkheads (2) may be placed in
 9 positions for cargo separation
Containers: TEU
 Hold 102
 Deck 48
Hatches: Roden Staal pontoon system
 Maximum hatch top loading 1.5t/m²
 Maximum tank top loading 15mt/m²
 Bottom strengthened for loading aground
 Tank top strengthened for heavy cargoes
 Engine room bulkhead A60 insulated
 CO₂ fire extinguishing system in hold
 Engine room fitted with CO₂ and flexi-fog
 Certified for the carriage of dangerous
 goods of IMO Class 4.1, 4.2, 4.3, 5.1
 and 5.2 (packaged)

Main Engine:
 MaK 6M25 1499kW with Scana Volda
 Gearbox and controllable pitch propeller
Auxiliaries:
 2 x Sisu Diesel 645BSBIG 180kW 1500rpm
Generators:
 2 x Stamford 210Kva
 1 x shaft alternator M8BM315MB4 400kVA
Speed: abt. 11.5knots
Consumption:
 In port – abt. 0.75t Gas Oil per day
 At sea – abt. 7.50t HFO per day
Equipment:
 GMDSS (A3), 2x radars, navtex,
 echosounder, speed/distance log
 2x GPS receivers, A/P,
 gyro/magnetic compasses,
 1x electric bowthrustrer 250kW

Arklow Raider



- Length with bulkheads stowed fwd 54.40m
- Length with bulkheads stowed aft 57.50m
- Length with 1 bulkhead stowed fwd and aft 50.50m