

# M.V. Arklow Raven



Port of Registry Arklow  
 Call Sign E I X R  
 Sat Phone +870 7732 42100  
 Email araven@arkship.ie  
 IMO No. 9344538  
 MMSI No. 250001109  
 Inmarsat-C (Telex) +(581) 425000228  
 +(581) 425000229  
 GSM telephone (Irish) + 353 (87) 6763968

Yard Barkmeijer Stroobos, Holland  
 Year of Build 2007  
 Class Bureau Veritas  
 Class Notation I + HULL + MACH + AUT-UMS  
 MON-SHAFT STRENGTHBOTTOM  
 Class No. 07982D  
 Official No. 404060



© Bert van der Kuijl

Photo courtesy of Bert van der Kuijl

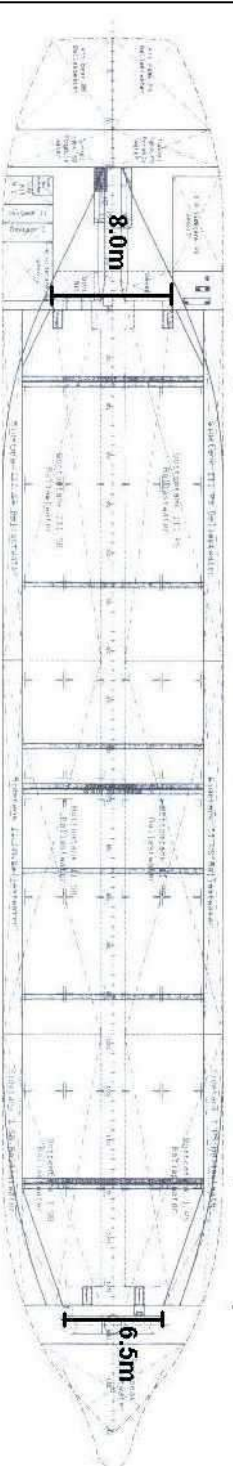
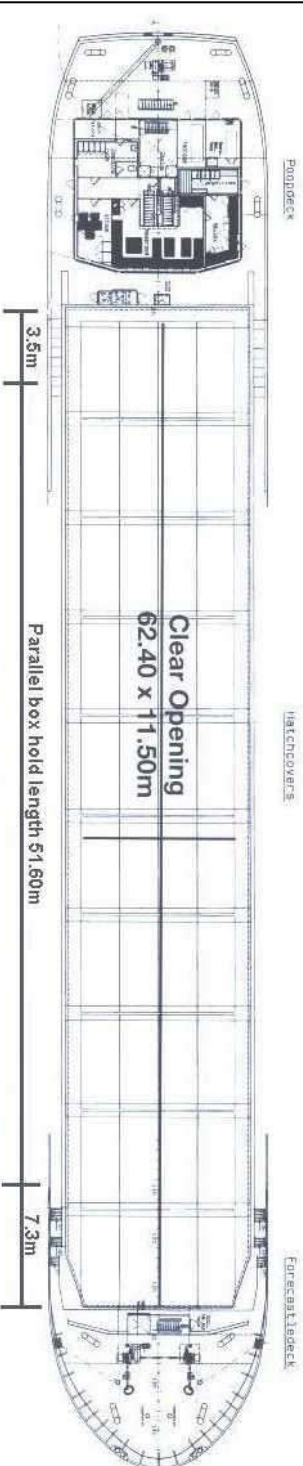
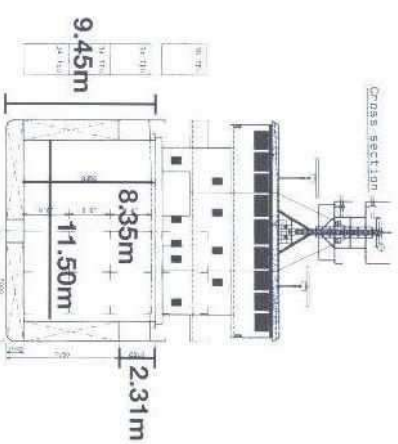
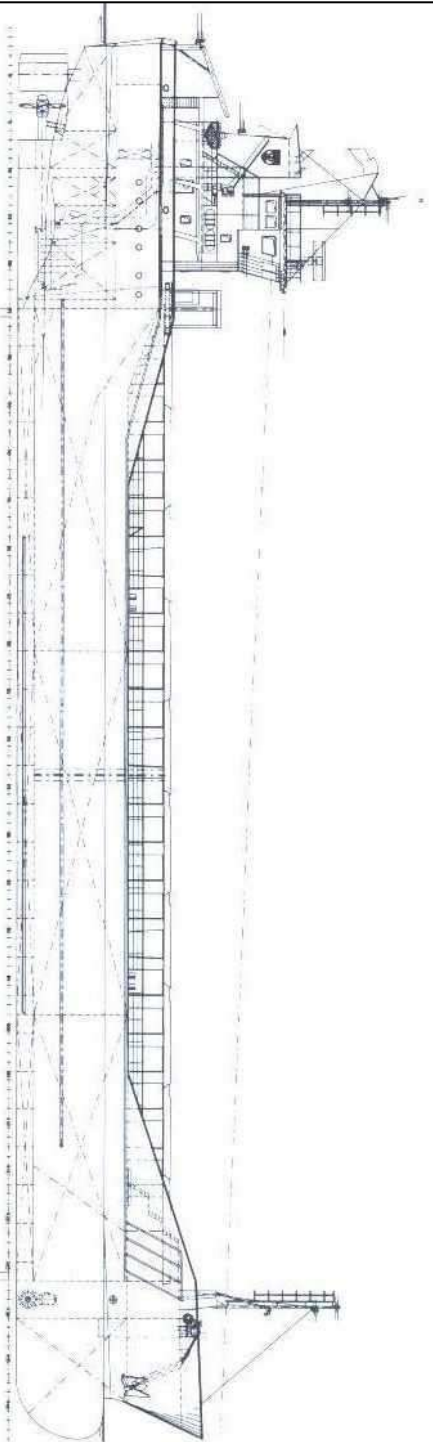
## Principal Particulars

Length OA 89.99m  
 Length BP 84.98m  
 Breadth Mid 14.00m  
 Breadth Ext 14.18m  
 Depth Mid 7.15m  
 Summer Load Draft 6.1m  
 Min. airdraft is 20.60m  
 at max. ballast draft of 3.8m  
 min. coaming ht above waterline 5.7m  
 GT 2999  
 NT 1639  
 Displacement 6965t  
 Total Deadweight 4933t  
 Ballast 1839m<sup>3</sup>  
 Fuel – HFO 150.52m<sup>3</sup>  
 Fuel – GO 36.42m<sup>3</sup>  
 Fresh Water 88m<sup>3</sup>  
 Lub Oil 8m<sup>3</sup>

**Hold Capacity:** Grain & Bale  
 Incl. bulkheads 207391 ft<sup>3</sup>/5873 m<sup>3</sup>  
 B/H stowed midships 206541 ft<sup>3</sup>/5849 m<sup>3</sup>  
 Portable bulkheads (2) may be placed in  
 9 positions for cargo separation  
**Containers:** TEU  
 Hold 102  
 Deck 48  
**Hatches:** Roden Staal pontoon system  
 Maximum hatch top loading 1.5t/m<sup>2</sup>  
 Maximum tank top loading 15mt/m<sup>2</sup>  
 Bottom strengthened for loading aground  
 Tank top strengthened for heavy cargoes  
 Engine room bulkhead A60 insulated  
 CO<sub>2</sub> fire extinguishing system in hold  
 Engine room fitted with CO<sub>2</sub> and flexi-fog  
 Certified for the carriage of dangerous  
 goods of IMO Class 4.1, 4.2, 4.3, 5.1  
 and 5.2 (packaged)

**Main Engine:**  
 MaK 6M25 1499kW with Scana Volda  
 Gearbox and controllable pitch propeller  
**Auxiliaries:**  
 2 x Sisu Diesel 645BSBIG 180kW 1500rpm  
**Generators:**  
 2 x Stamford 210Kva  
 1 x shaft alternator M8BM315MB4 400kVA  
**Speed:** abt. 11.5knots  
**Consumption:**  
 In port – abt. 0.75t Gas Oil per day  
 At sea – abt. 7.50t HFO per day  
**Equipment:**  
 GMDSS (A3), 2x radars, navtex,  
 echosounder, speed/distance log  
 2x GPS receivers, A/P,  
 gyro/magnetic compasses,  
 1x electric bowthrustrer 250kW

# Arklow Raven



- Length with bulkheads stowed fwd 54.40m
- Length with bulkheads stowed aft 57.50m
- Length with 1 bulkhead stowed fwd and aft 50.50m