

M.V. Arklow Rainbow



Port of Registry Arklow
 Call Sign E I C L
 Sat Phone +870 7732 42085
 Email arainbow@arkship.ie
 IMO No. 9344497
 MMSI No. 250000040
 Inmarsat-C (Telex) +(581)425000088
 +(581)425000089
 GSM telephone (Irish) + 353 (87) 6744253

Yard Barkmeijer Stroobos, Holland
 Year of Build 2006
 Class Bureau Veritas
 Class Notation + I 3/3E + CARGOSHIP DEEP SEA
 + MACH + AUT-MS Heavy Cargo BRG
 Class No. 07978Y
 Official No. 403348



Principal Particulars

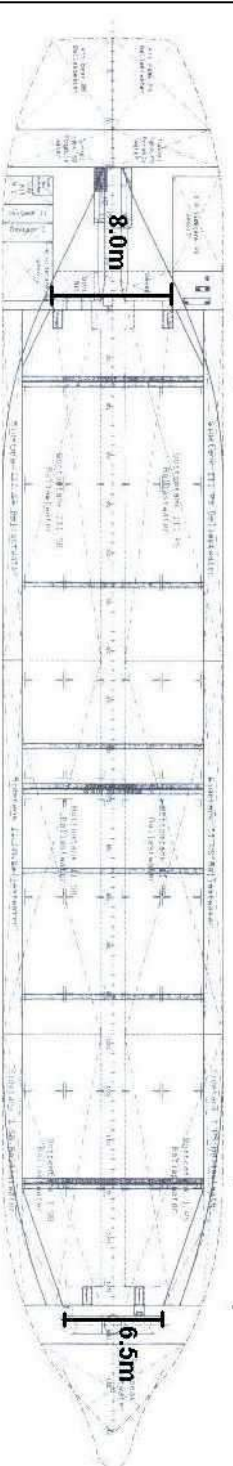
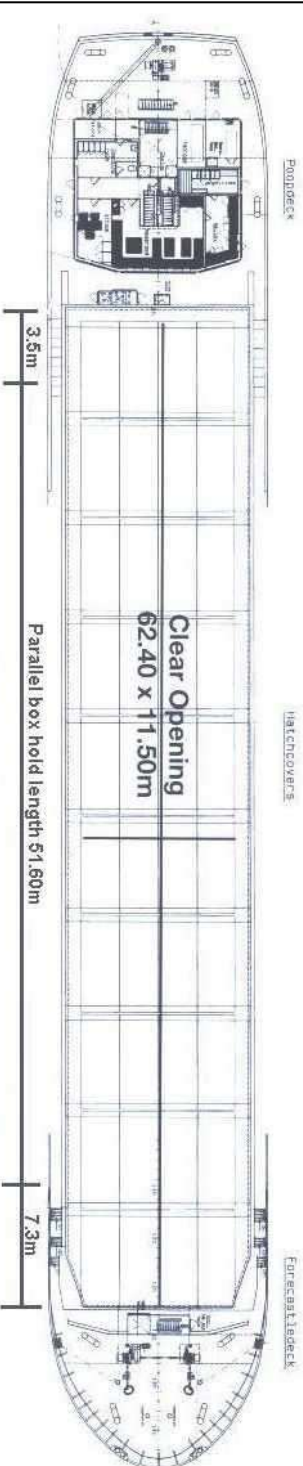
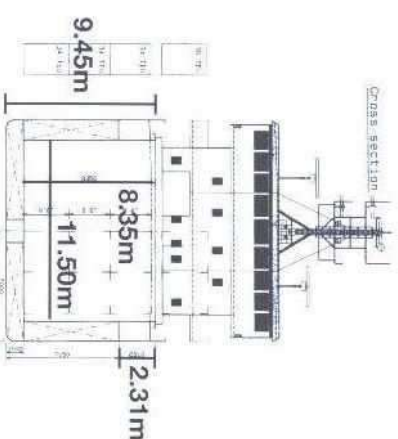
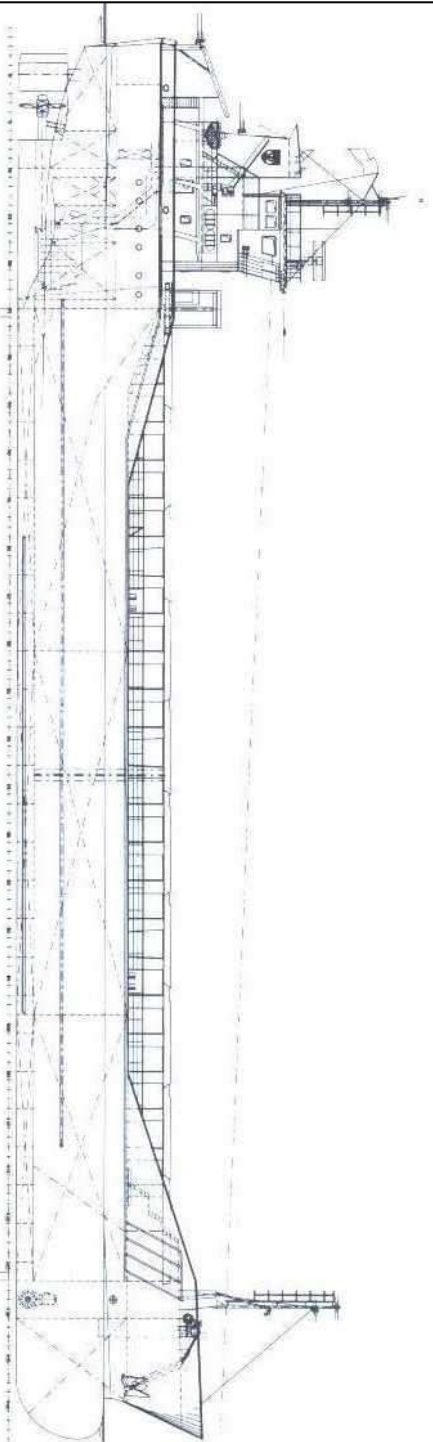
Length OA 89.99m
 Length BP 84.98m
 Breadth Mld 14.00m
 Breadth Ext 14.18m
 Depth Mld 7.15m
 Summer Load Draft 6.1m
 Min. air draft is 20.60m
 at max. ballast draft of 3.8m
 min. coaming ht above waterline 5.7m
 GT 2999
 NT 1639
 Displacement 6392t
 Summer DWCC 4933t
 Ballast 1839m³
 Fuel - HFO 150.52m³
 Fuel - GO 36.42m³
 Fresh Water 88m³
 Lub Oil 8m³
18/08/2015

Hold Capacity: Grain & Bale
 Incl. bulkheads 207391 ft³/5873 m³
 B/H stowed midships 206541 ft³/5849 m³
 Portable bulkheads (2) may be placed in
 9 positions for cargo separation
Containers: **TEU**
 Hold 102
 Deck 36
Hatches: Roden Staal pontoon system
 Maximum hatch top loading 1.5t/m²
 Maximum tank top loading 15mt/m²
 Bottom strengthened for loading aground
 Tank top strengthened for heavy cargoes
 Engine room bulkhead A60 insulated
 CO₂ fire extinguishing system in hold
 Engine room fitted with CO₂ and flexi-fog
 Certified for the carriage of dangerous
 goods of IMO Class 4.1, 4.2, 4.3, 5.1
 and 5.2 (packaged)

Main Engine:
 MaK 6M25 1499kW with Scana Volda
 Gearbox and controllable pitch propeller
Auxiliaries:
 2 x Sisu Diesel 645BDBIC 200kW 1500rpm
Generators:
 2 x Stamford 215kVA
 1 x shaft alternator M8BM315MB4 400kVA
Speed: abt. 11.5knots
Consumption:
 In port - abt. 0.75t Gas Oil per day
 At sea - abt. 7.50t HFO per day
Equipment:
 GMDSS (A3), 2x radars, navtex,
 echosounder, speed/distance log
 2x GPS receivers, A/P,
 gyro/magnetic compasses,
 1x electric bowthrustrer 250kW

E. & O. E.

Arklow Rainbow



- Length with bulkheads stowed fwd 54.40m
- Length with bulkheads stowed aft 57.50m
- Length with 1 bulkhead stowed fwd and aft 50.50m