

M.V. Arklow Rebel



Port of Registry Arklow
 Call Sign E I V G
 Sat Phone +870 7732 42089
 Email arebel@arkship.ie
 IMO No. 9291731
 MMSI No. 250000444
 Inmarsat-C (Telex) +(581)425000071
 GSM telephone (Irish) + 353 (87) 2904558

Yard Barkmeijer Stroobos, Holland
 Year of Build 2005
 Class Bureau Veritas
 Class Notation + I 3/3E + CARGOSHIP DEEP SEA
 + MACH + AUT-MS Heavy Cargo BRG
 Class No. 04204W
 Official No. 403347



Principal Particulars

Length OA	89.99m
Length BP	84.98m
Breadth Mld	14.00m
Breadth Ext	14.18m
Depth Mld	7.15m
Summer Load Draft	6.1m
Min. airdraft is	20.60m
at max. ballast draft of	3.8m
min. coaming ht above waterline	5.7m
GT	2999
NT	1639
Displacement	6392t
Total Deadweight	4933t
Ballast	1839m ³
Fuel – HFO	150.52m ³
Fuel - GO	36.42m ³
Fresh Water	88m ³
Lub Oil	8m ³

18/08/2015

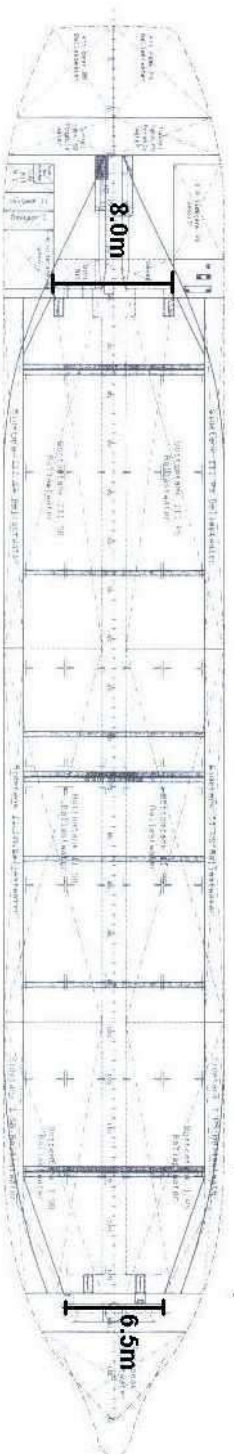
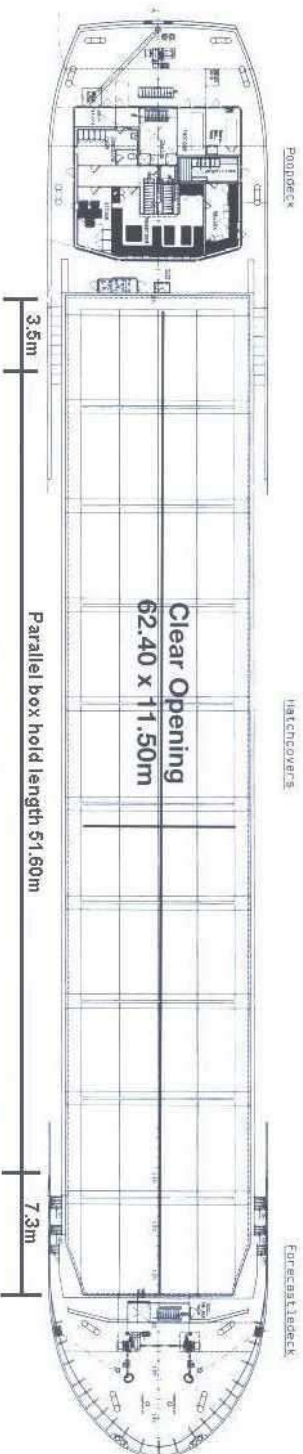
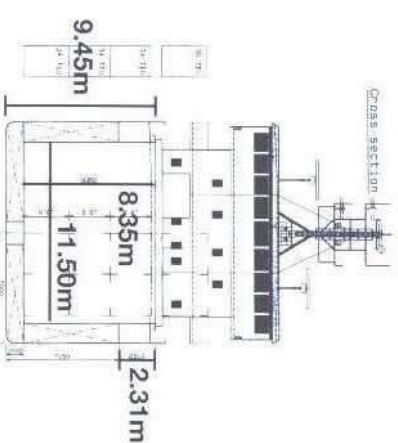
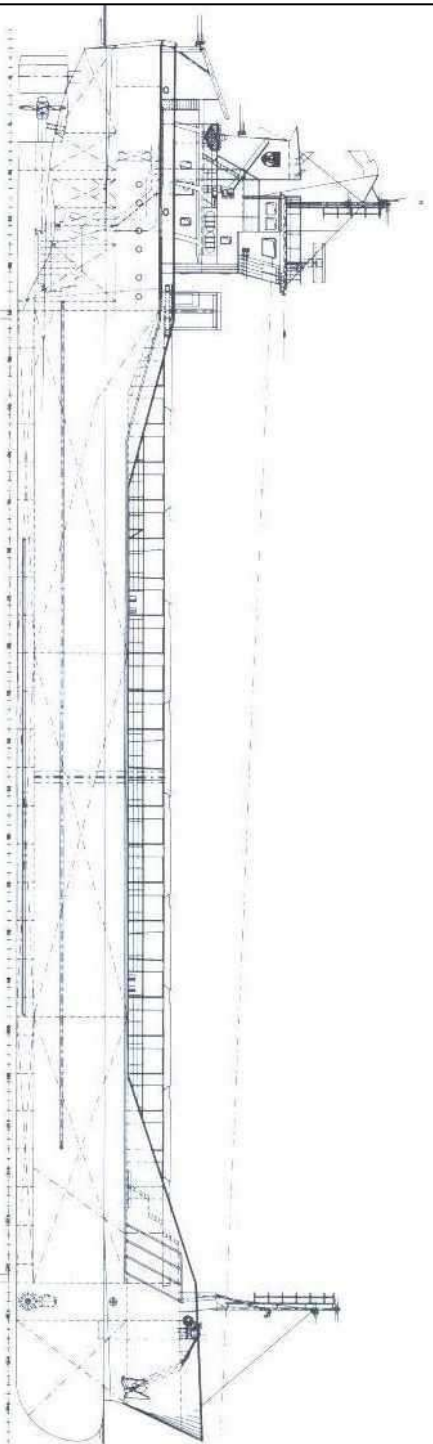
Hold Capacity: Grain & Bale
 Incl. bulkheads 207391 ft³/5873 m³
 B/H stowed midships 206541 ft³/5849 m³
 Portable bulkheads (2) may be placed in
 9 positions for cargo separation
Containers: **TEU**
 Hold 102
 Deck 36
Hatches: Roden Staal pontoon system
 Maximum hatch top loading 1.5t/m²
 Maximum tank top loading 15mt/m²
 Bottom strengthened for loading aground
 Tank top strengthened for heavy cargoes
 Engine room bulkhead A60 insulated
 CO₂ fire extinguishing system in hold
 Engine room fitted with CO₂ and flexi-fog
 Certified for the carriage of dangerous
 goods of IMO Class 4.1, 4.2, 4.3, 5.1
 and 5.2 (packaged)

Photo courtesy of Mark Knopplow

Main Engine:
 MaK 6M25 1499kW with Scana Volda
 Gearbox and controllable pitch propeller
Auxiliaries:
 2 x Sisu Diesel 645BDBIC 200kW 1500rpm
Generators:
 2 x Stamford 215kVA
 1 x shaft alternator M8BM315MB4 400kVA
Speed: abt. 11.5knots
Consumption:
 In port – abt. 0.75t Gas Oil per day
 At sea – abt. 7.50t HFO per day
Equipment:
 GMDSS (A3), 2x radars, navtex,
 echosounder, speed/distance log
 2x GPS receivers, A/P,
 gyro/magnetic compasses,
 1x electric bowthruuster 250kW

E. & O. E.

Arklow Rebel



- Length with bulkheads stowed fwd 54.40m
- Length with bulkheads stowed aft 57.50m
- Length with 1 bulkhead stowed fwd and aft 50.50m