

# M.V. Arklow Racer

Port of Registry Arklow  
 Call Sign E.I.Q.M  
 Sat Phone +870 7732 42087  
 Email aracer@arkship.ie  
 IMO No. 9291729  
 MMSI No. 250016000  
 Inmarsat-C (Telex) +(581) 425001610  
 +(581) 425001611  
 GSM telephone (Irish) +353 (0) 87 6296405

Yard Barkmeijer Stroobos B.V., Holland  
 Year of Build 2004  
 Class Bureau Veritas  
 Class Notation + 3/3E + CARGOSHIP DEEP SEA +  
 MACH + AUT-MS Heavy CargoBRG  
 Deep Sea / Ice Class 1B  
 Class No. 04203V  
 Official No. 403342



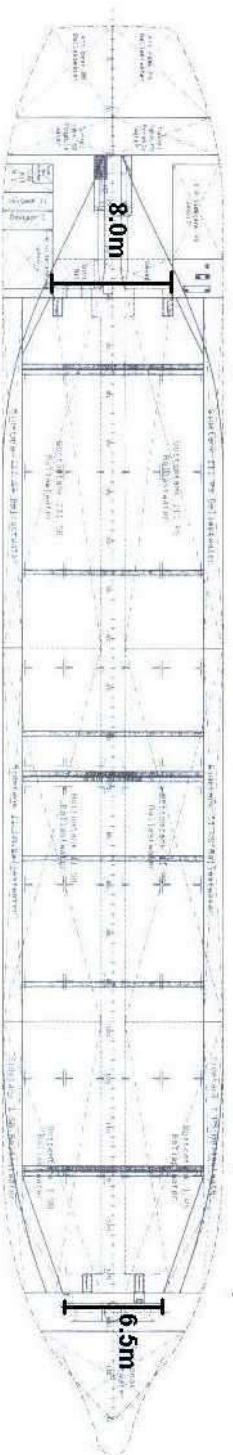
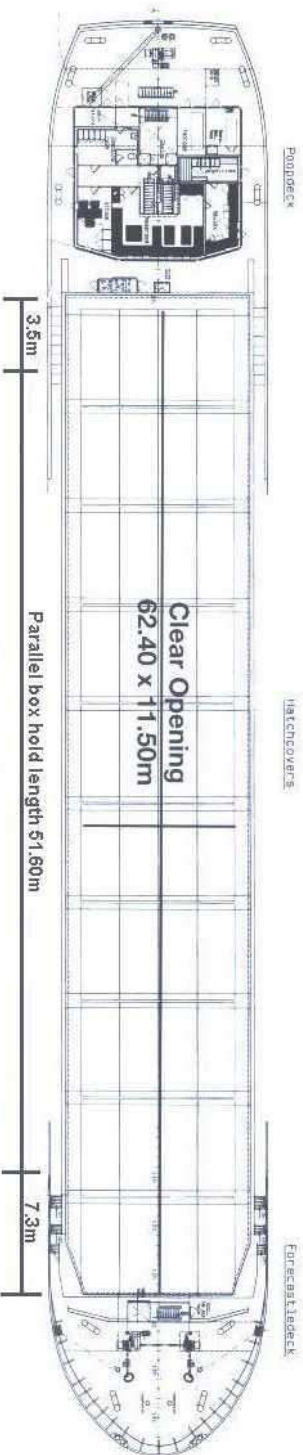
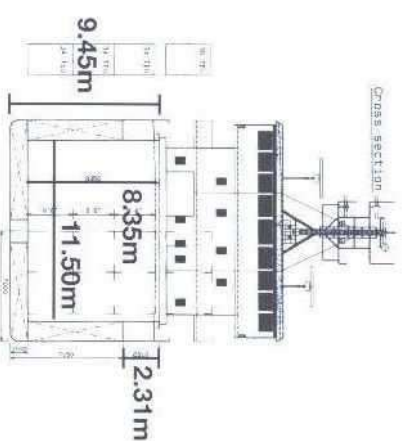
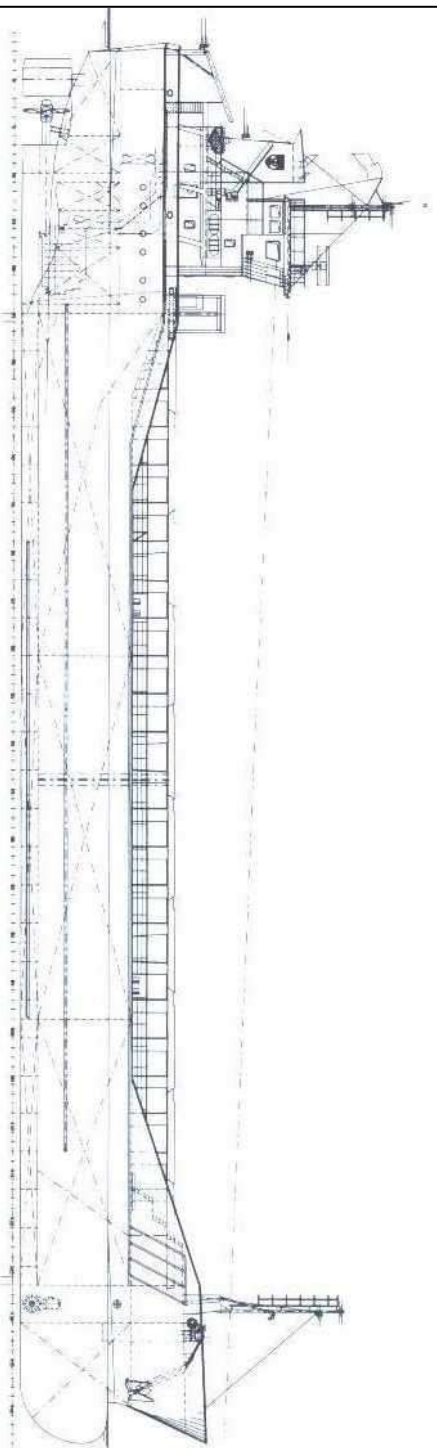
## Principal Particulars

Length OA 89.99m  
 Length BP 84.98m  
 Breadth Mld 14.00m  
 Breadth Ext 14.18m  
 Depth Mld 7.15m  
 Summer Load Draft 6.1 m  
 Min. air draft is 20.60m  
 at max. ballast draft of 3.8m  
 min. coaming ht above waterline 5.7m  
 GT 2999  
 NT 1639  
 Displacement 6392t  
 Total Deadweight 4890t  
 Ballast 1945m<sup>3</sup>  
 Fuel – HFO 121.28m<sup>3</sup>  
 Fuel – GO 35.84m<sup>3</sup>  
 Fresh Water 88m<sup>3</sup>  
 Lub Oil 13m<sup>3</sup>

**Hold Capacity:** Grain & Bale  
 Incl. bulkheads 207391 ft<sup>3</sup>/5873 m<sup>3</sup>  
 B/H stowed midships 206541 ft<sup>3</sup>/5849 m<sup>3</sup>  
 Portable bulkheads (2) may be placed in  
 9 positions for cargo separation  
**Containers:** **TEU**  
 Hold 102  
 Deck 36  
**Hatches:** Roden Staal pontoon system  
 Maximum hatch top loading 1.5t/m<sup>2</sup>  
 Maximum tank top loading 15.0t/m<sup>2</sup>  
 Bottom strengthened for loading aground  
 Tank top strengthened for heavy cargoes  
 Engine room bulkhead A60 insulated  
 CO<sub>2</sub> fire extinguishing system in hold  
 Certified for the carriage of dangerous goods  
 of IMO Class 4.1, 4.2, 4.3, 5.1 and 5.2  
 (packaged)

**Main Engine:**  
 MaK 6M25 1499kW with Scana Volda  
 gearbox and controllable pitch propeller  
**Auxiliaries:**  
 2 x Valmet 634 DSG 150kVA / 1500 rpm  
**Generators:**  
 2 x Stamford UCM274 H 175 kVA  
 1 x shaft alternator HCM534D2 435kVA  
**Speed:** 11.5knots  
**Consumption:**  
 In port – abt. 0.75t Gas Oil per day  
 At sea – 7.50t HFO per day  
**Equipment:**  
 GMDSS (A3), 2x radars, navtex,  
 echo sounder, speed/distance log,  
 2x GPS receivers,  
 gyro/magnetic compass.A/P  
 1x bowthruster 250kW

# Arklow Racer



Length with bulkheads stowed fwd 54.40m  
 Length with bulkheads stowed aft 57.50m  
 Length with 1 bulkhead stowed fwd and aft 50.50m