

M.V. Arklow Rover

Port of Registry Arklow
 Call Sign EIPL
 Sat Phone +870 7732 40905
 Email arover@arkship.ie
 IMO No. 9291717
 MMSI No. 250515000
 Inmarsat-C (Telex) + (581) 425051510
 + (581) 425051520
 GSM telephone (Irish) + (353) 87 2586 929

Yard Barkmeijer Stroobos, Holland
 Year of Build 2004
 Class Bureau Veritas
 Class Notation I 3/3 E {Cargoship/Deepsea/Heavy
 Cargo; BRG; {AUT MS {MACH
 Class No. 04202U
 Official No. 403341



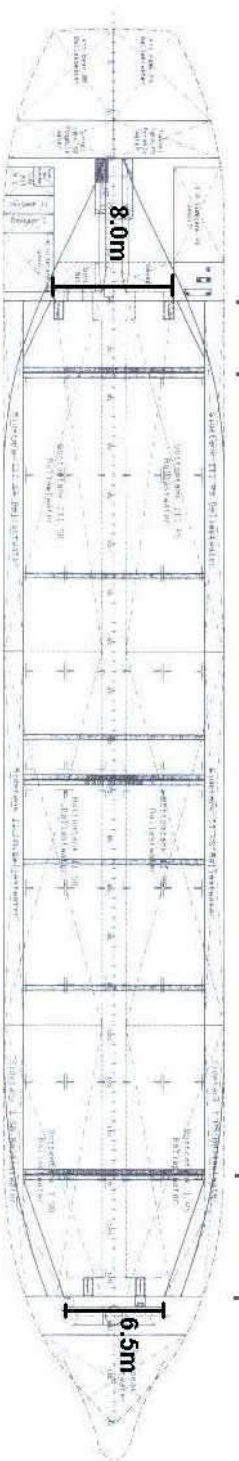
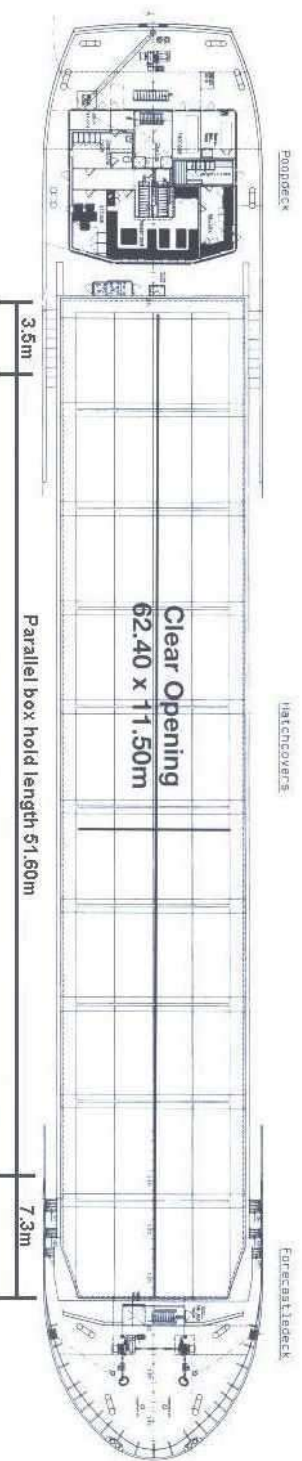
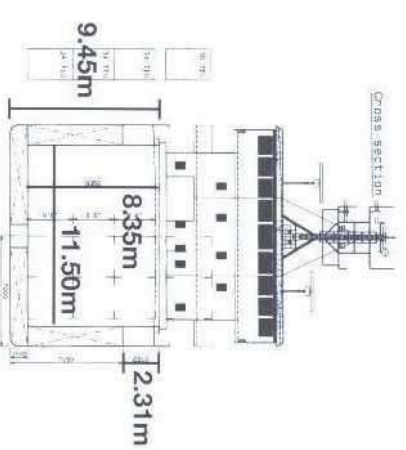
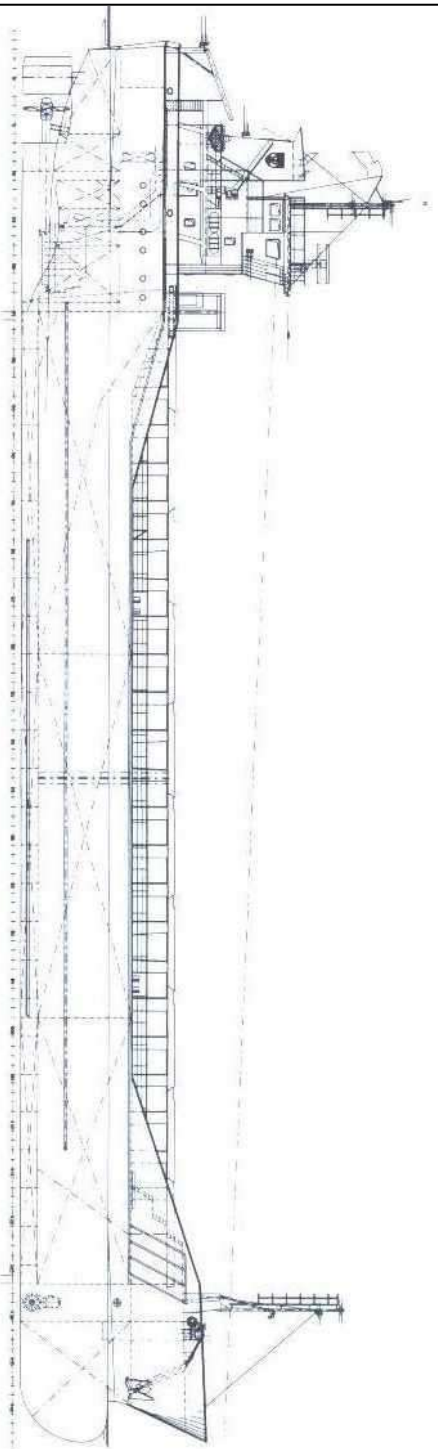
Principal Particulars

Length OA 89.99m
 Length BP 84.98m
 Breadth Mld 14.00m
 Breadth Ext 14.18m
 Depth Mld 7.15m
 Summer Load Draft 6.10m
 Min. airdraft is 20.60m
 at max. ballast draft of 3.8m
 min. coaming ht above waterline 5.7m
 GT 2999
 NT 1639
 Displacement 6965t
 Total Deadweight 4933t
 Ballast 1945m³
 Fuel – HFO 121.28m³
 Fuel - GO 35.84m³
 Fresh Water 88m³
 Lub Oil 13m³

Hold Capacity: Grain & Bale
 Incl. bulkheads 207391 ft³/5873 m³
 B/H stowed midships 206541 ft³/5849 m³
 Portable bulkheads (2) may be placed in
 9 positions for cargo separation
Containers: **TEU**
 Hold 102
 Deck 36
Hatches: Roden Staal pontoon system
 Maximum hatch top loading 1.5t/m²
 Maximum tank top loading 15.0t/m²
 Bottom strengthened for loading aground
 Tank top strengthened for heavy cargoes
 Engine room bulkhead A60 insulated
 CO₂ fire extinguishing system in hold
 Certified for the carriage of dangerous
 Goods of IMO Class 4.1, 4.2, 4.3, 5.1
 and 5.2 (packaged)

Main Engine:
 MaK 6M25 1499kW with Scana Volda
 gearbox and controllable pitch propeller
Auxiliaries:
 2x Valmet 634DSIG 150kW 1500rpm
Generators:
 2 x Stamford UCM274 H 175kVA
 1 x shaft alternator HCM534D2 435kVA
Speed: 11.5 knots
Consumption:
 In port – abt. 0.75t Gas Oil per day
 At sea – 7.50 mt HFO per day
Equipment:
 GMDSS (A3), 2x radars, navtex,
 echo sounder, speed/distance log,
 2x GPS receivers,
 gyro/magnetic compass.A/P
 1x bow thrusters 250kW

Arklow Rover



Length with bulkheads stowed fwd 54.40m
 Length with bulkheads stowed aft 57.50m
 Length with 1 bulkhead stowed fwd and aft 50.50m