

# Arklow Wave

Port of Registry	Arklow	Yard	Ferus Smit 447
Call Sign	EIUQ9	Year of Build	2018
Sat Phone	+31 85 6661295	Class	Bureau Veritas (BV)
Email	awave@aslships.com	Class Notation	I, *Hull *Mach, Unrestricted navigation, General Cargo Ship, *AUT-UMS, MON-SHAFT, ALP, INWATER SURVEY, ICE class 1A (finnish/Swedish)
Inmarsat-C (Telex)	425000594@stratosmobile.com	Owner/Managers P & I Club	Arklow Shipping, North Quay, Arklow, County Wicklow North of England P & I
GSM telephone	+353 87 3311836	Class No.	31788E
		Official No.	404996
		IMO No.	9818931
		MMSI No.	250005382



## Principal Particulars

Length OA	149.50m
Length BP	145.50m
Breadth Mld	19.25m
Depth Mld	12.00m
Summer Load Draft Mld	8.59m
Summer Deadweight	16643.4t
Winter Load Draft	8.41m
Winter Deadweight	16167.70t
GT	9999t
NT	5,155t
At max. ballast draft of	6.40m
Min. airdraft	28.80m
min. coaming ht above waterline	8.80m
Ballast	6965m <sup>3</sup>
Ballast Rate per Pump (x 2)	450m <sup>3</sup>
Fuel (90%)	350m <sup>3</sup>
Diesel (90%)	170m <sup>3</sup>
Fresh Water	60m <sup>3</sup>

### Hold Capacities

	Grain	
	m <sup>3</sup>	ft <sup>3</sup>
Hold 1	7340	259197
Hold 2	11976	422908

### Hatch Dimensions

Hatch 1	58.72m x 16.05m
Hatch 2	48.4m x 16.05m

### Mechanical Ventilation

6 Changes/hr

### Max Load Tank top

20t/m<sup>2</sup>

**Bulkheads** 2 Moveable with 9 positions

### EQUIPMENT

	Maker
Reduction Gearbox	Keller
Pitch Propeller	Berg
Ballast Pumps	Azcue
Ballast pump with BWTS	Headway
HFO Fuel Pump	Kral
FO separator	Westfalia
Go Separator	Westfalia
LO system	Westfalia
Dehumidifier for Holds	

### Detail

#### Main Engine:

### Maker

MAK 8m32C

### Output

MCR 3840kw

#### Auxiliaries:

Shaft Generator	Yanmar	750kw
Diesel Generators	Yanmar	250kw, 400v 50hz
Harbour Emergency Generator	Yanmar	100kw, 400v, 50hz

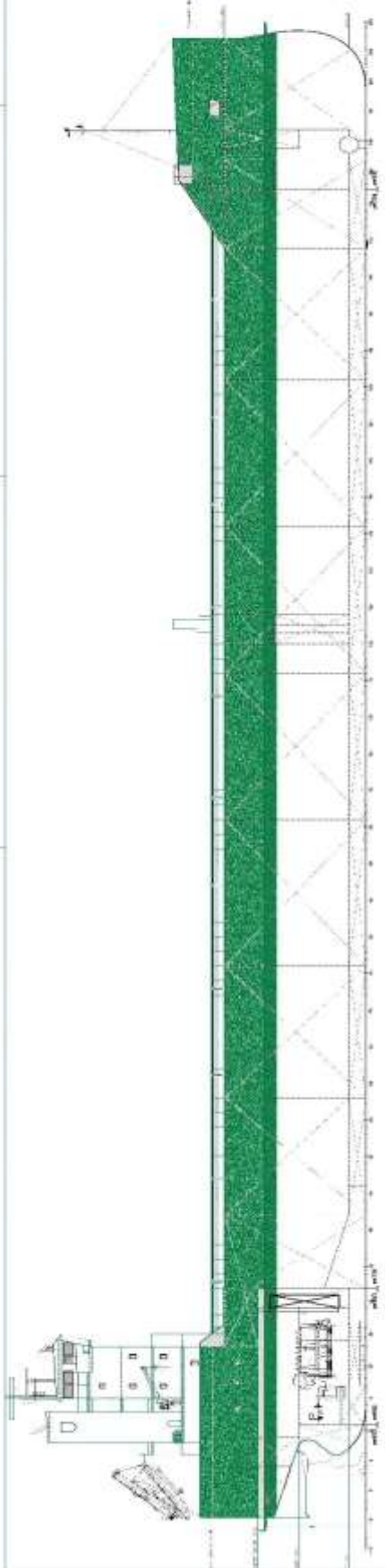
### Speed & Consumption Ballast

abt 13.5kts on abt 17t IFO 380

*Please read above figures as MDO in SECA Zones*

27.03.17

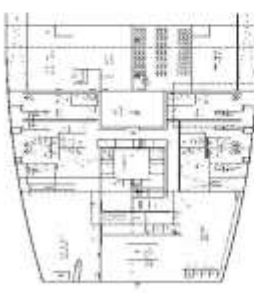
E. & O. E



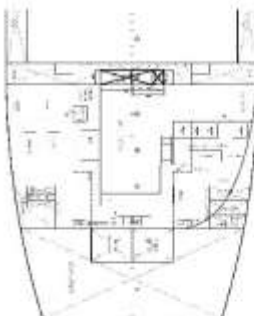
CROSS SECTION



ADMINISTRATION DECK



TRINACON ENGINE ROOM



BOAT DECK



OFFICERS DECK



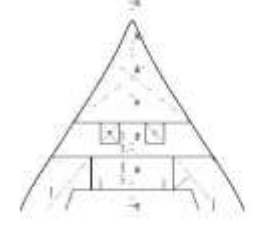
CAPTAIN'S BECK



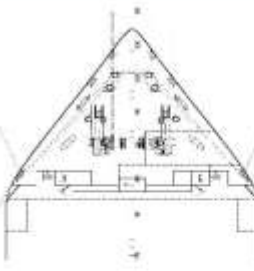
BRIDGE DECK



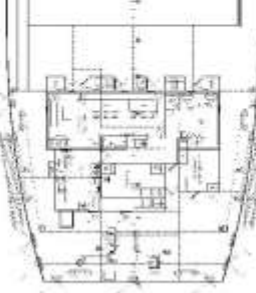
ROOF 6/A



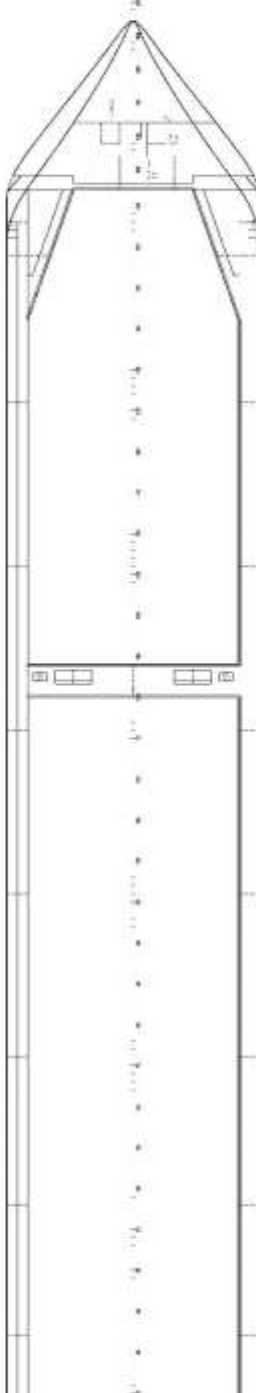
FORECASTLE DECK



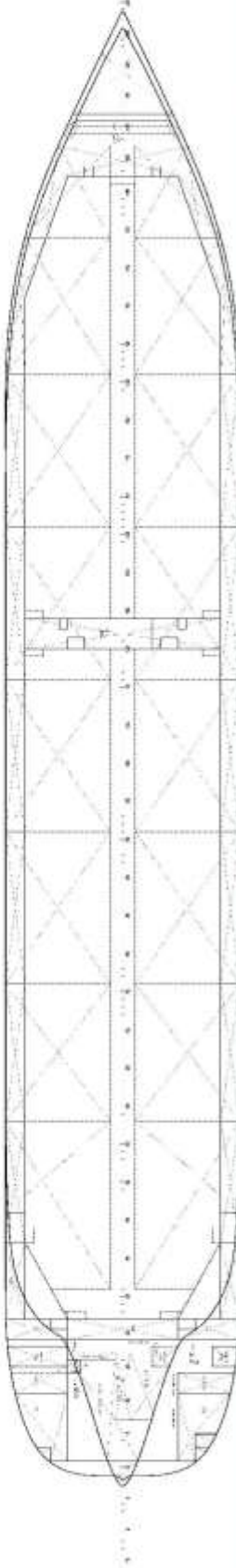
SAVED QUARTER DECK



MAIN DECK



MAIN DECK



GENERAL PARTICULARS

Length 110.00 m  
 Breadth 12.00 m  
 Draught 4.50 m  
 Capacity 10000 mt (approx)  
 Price 100000000

CLASSIFICATION

Bureau Veritas  
 Class A 10000 mt (approx)  
 Service life 20 years

GENERAL ARRANGEMENT	
NO.	DATE
1	10/10/2023
2	10/10/2023
3	10/10/2023
4	10/10/2023
5	10/10/2023
6	10/10/2023
7	10/10/2023
8	10/10/2023
9	10/10/2023
10	10/10/2023



**SHIPARD DESIGN SMT S.A.**  
 Navale Strada 7 - Livorno  
 Tel: +39 0586 490000  
 Fax: +39 0586 490001  
 Email: info@shipard.it  
 Web: www.shipard.it