

Arklow Wave

Port of Registry	Arklow	Yard	Ferus Smit 447
Call Sign	EIUQ9	Year of Build	2018
Sat Phone	+31 85 6661295	Class	Bureau Veritas (BV)
Email	awave@aslships.com	Class Notation	I, *Hull *Mach, Unrestricted navigation, General Cargo Ship, *AUT-UMS, MON-SHAFT, ALP, INWATER SURVEY, ICE class 1A (finnish/Swedish)
Inmarsat-C (Telex)	425000594@stratosmobile.com	Owner/Managers P & I Club	Arklow Shipping, North Quay, Arklow, County Wicklow North of England P & I
GSM telephone	+353 87 3311836	Class No.	31788E
		Official No.	404996
		IMO No.	9818931
		MMSI No.	250005382



Principal Particulars

Length OA	149.50m
Length BP	145.50m
Breadth Mld	19.25m
Depth Mld	12.00m
Summer Load Draft Mld	8.59m
Summer Deadweight	16791.4t
Winter Load Draft	8.41m
Winter Deadweight	16315.7t
GT	9999t
NT	5,155t
At mean ballast draft	4.7m
Min. air draft	28.80m
min. coaming ht above waterline	8.80m
Ballast	6965m ³
Ballast Rate per Pump (x 2)	450m ³
Fuel (90%)	350m ³
Diesel (90%)	170m ³
Fresh Water	60m ³

Hold Capacities

	Grain m ³	ft ³
Hold 1	7540	266275
Hold 2	12176.7	430,020

Hatch Dimensions

Hatch 1	42.0m x 16.05m x 11.8m
Hatch 2	64.0m x 16.05m x 11.8m

Mechanical Ventilation

6 Changes/hr

Max Load Tank top

20t/m²

Bulkheads 2 Moveable with 9 positions

EQUIPMENT

Reduction Gearbox
Pitch Propeller
Ballast Pumps
Ballast pump with BWTS
HFO Fuel Pump
FO separator
Go Separator
LO system
Dehumidifier for Holds

Maker

Keller
Berg
Azcue
Headway
Kral
Westfalia
Westfalia
Westfalia

Detail

Main Engine:

Maker

MAK 8m32C

Output

MCR 3840kw

Auxiliaries:

Shaft Generator	Yanmar	750kw
Diesel Generators	Yanmar	250kw, 400v 50hz
Harbour Emergency Generator	Yanmar	100kw , 400v , 50hz

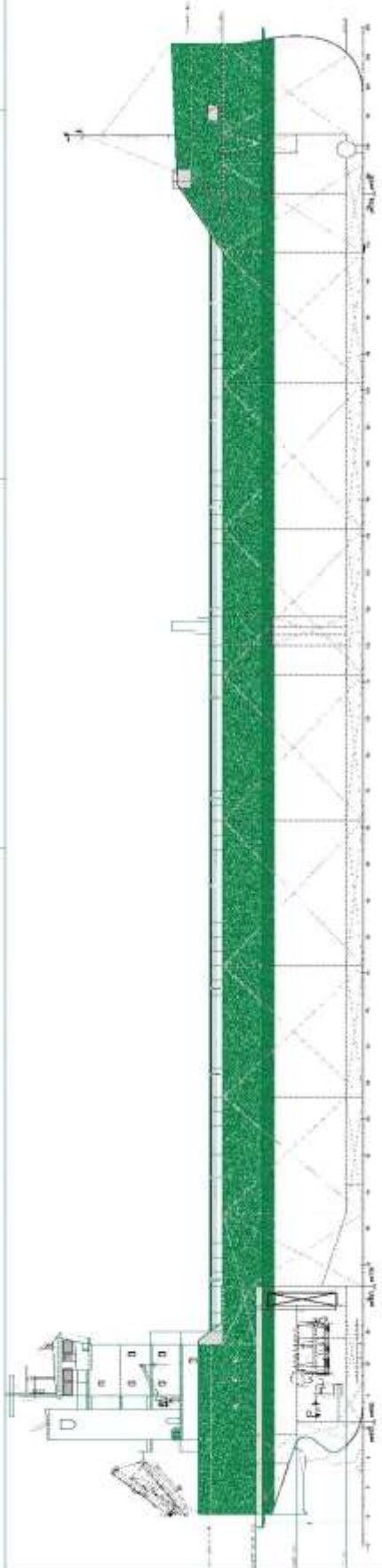
Speed & Consumption Ballast

abt 13.5kts on abt 17t IFO 380

Please read above figures as MDO in SECA Zones

27.03.17

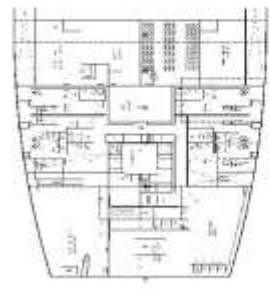
E. & O. E



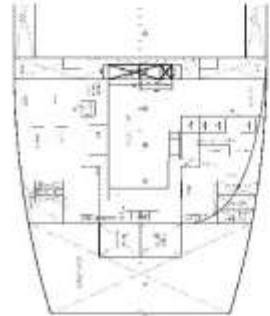
SIDE SECTION



ACCOMMODATION DECK



FOREPEAK ENGINE ROOM



BOAT DECK



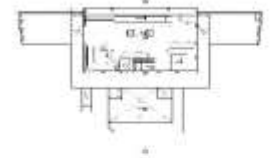
DEFENSES DECK



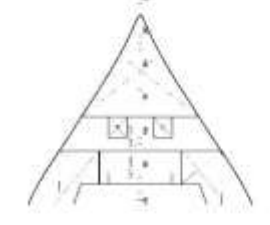
DATA/MS DECK



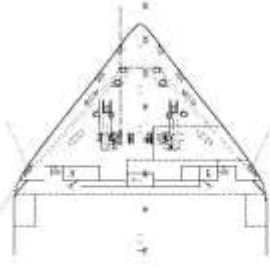
BRIDGE DECK



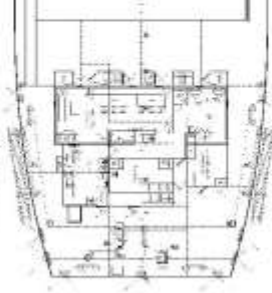
SOON DECK



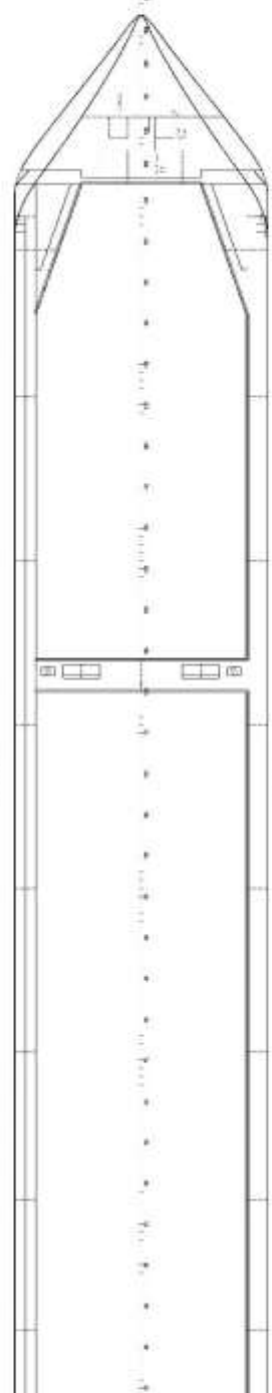
FORECASTLE DECK



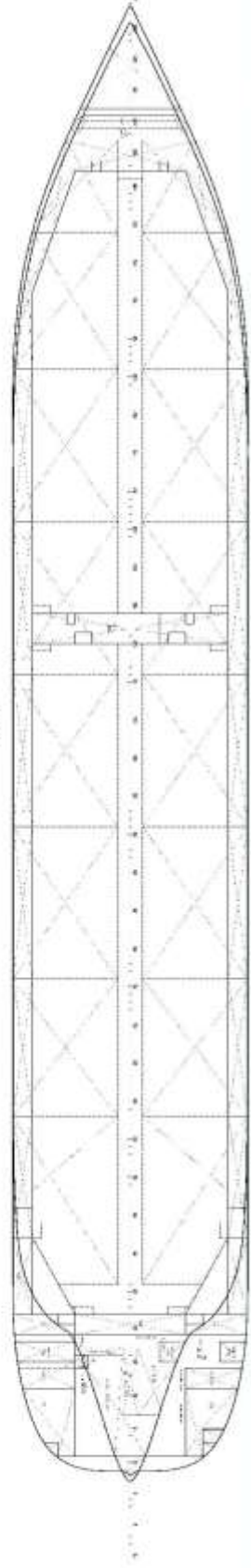
BAZARD QUARTER DECK



MAIN DECK



LOWER DECK



GENERAL PARTICULARS

Length 110.00 m
 Breadth 12.00 m
 Draught 4.50 m
 Displacement 10000 mt (Standard)
 Power 10000 HP (Standard)
 Year 2000

CLASSIFICATION

Bureau Veritas
 Class 100 A1, R 100 A1
 Service 1000 HP

GENERAL ARRANGEMENT	
NO.	DATE
1	2000.01
2	2000.02
3	2000.03
4	2000.04
5	2000.05
6	2000.06
7	2000.07
8	2000.08
9	2000.09
10	2000.10
11	2000.11
12	2000.12

SHIPNAME: TONS SMT S.V.
 No. 1000 / 1000
 No. 1000 / 1000

GENERAL ARRANGEMENT
 No. 1000 / 1000