

# M.V. Arklow Bank

Port of Registry	Rotterdam, The Netherlands	Yard	Ferus Smit
Call Sign	PCWW	Year of Build	2014
IMO No.	9638769	Class	Bureau Veritas
MMSI No	244810323	Class	Class 1, Hull, Mach,
		Notation	AUT-UMS, IWS, Strength bottom, Heavy Cargo, General Cargo
Inmarsat-C (telex)	424400742 424400473	Class No.	20400 B
Email	abank@ipsignature3.net	Official No.	23765 Z 2014
GSM telephone (Dutch)	+31621230970		

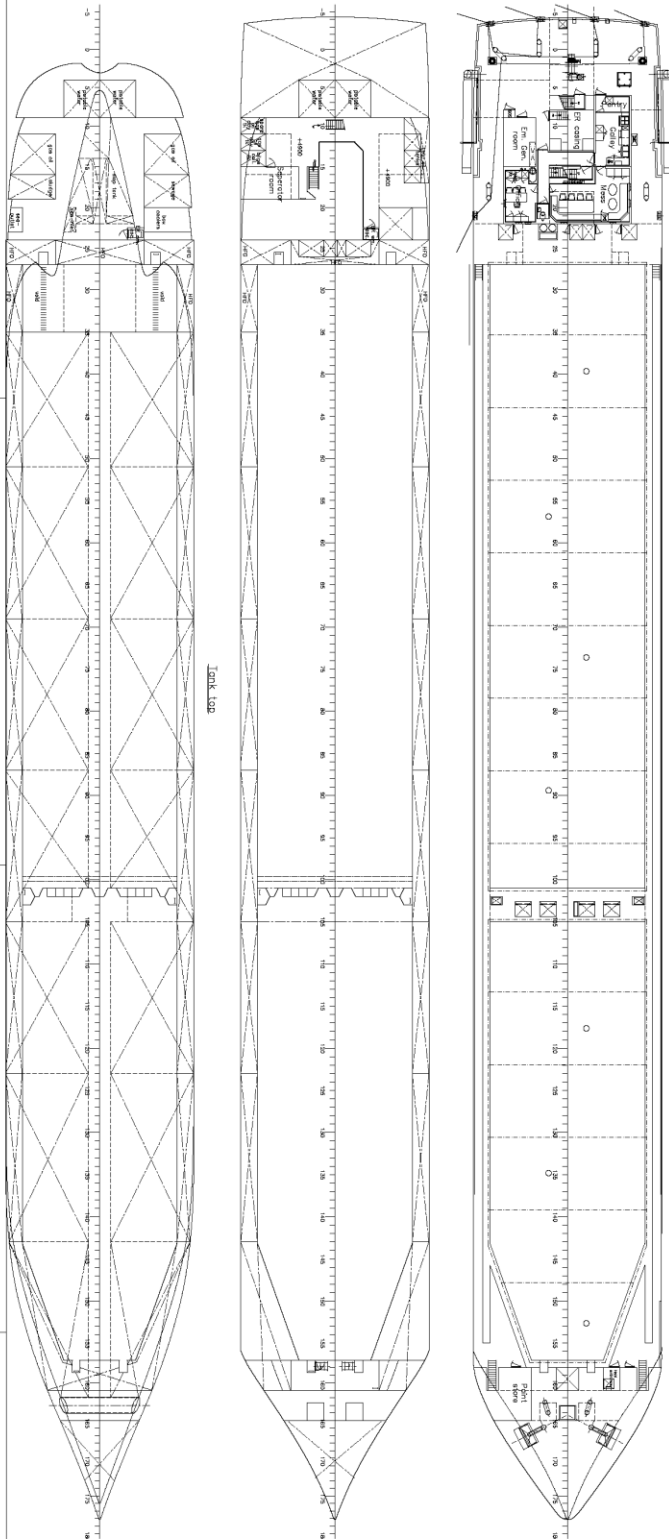
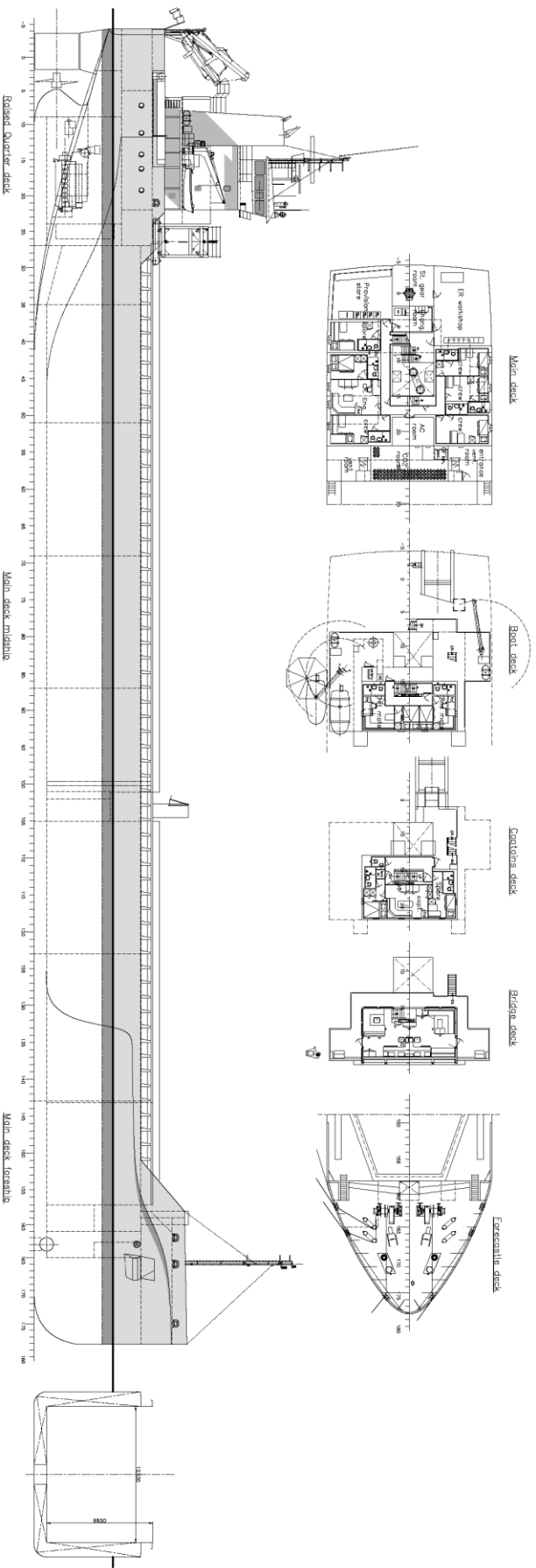


## Principal Particulars

mo

Length OA	119.49m	<b>Hold Capacities</b>	Grain & Bale	<b>Main Engine:</b>	MaK 8M25 2660 kW with Jake Gearbox and Berg controllable pitch propeller
Length BP	116.89m		<b>m<sup>3</sup></b>	<b>Auxiliaries:</b>	2 x Sisu Diesel 213kW 1500rpm
Breadth Mld	14.99m	No. 1 hold	4034,7	<b>Generators:</b>	2 x Aux generator 213kW
Depth Mld	9.70m	No. 2 hold	5867,9		1 x Emergency Generator 90kW
Summer Load Draft	7.186m	<b>Total</b>	9902,6		1 x shaft alternator 389kW
			349.706	<b>Speed:</b>	abt. 13.1 knots
Min. airdraft is	21.5m	Portable bulkhead may be placed in 5 positions for cargo separation and storage position		<b>Consumption:</b>	In port – abt. 1t Gas Oil per day
at max. summer draft of	7.186m				At sea – abt. 11t HFO per day
Min. coaming ht above WL	3,614m	<b>Hatches:</b> Coops & Nieborg pontoon system		<b>Equipment</b>	GMDSS (A3), 2x radars, navtex, Echo sounder, speed/distance log
GT	5065t	Maximum hatch top loading	1.75t/m <sup>2</sup>		2x GPS receivers, A/P, ECDIS, gyro/magnetic compasses,
NT	2655t	Maximum tank top loading	15mt/m <sup>2</sup>		1x electric bowthrustrer 380kW
Total Deadweight	8660t	Bottom strengthened for loading aground			
Ballast	3547m <sup>3</sup>	Tank top strengthened for heavy cargoes			
Fuel – HFO	286m <sup>3</sup>	CO <sub>2</sub> fire extinguishing system in hold			
Fuel – GO	38m <sup>3</sup>	Engine room fitted with CO <sub>2</sub> and LAFF			
Fresh Water	53m <sup>3</sup>	Certified for the carriage of dangerous goods of IMO Class 1.4, 2.1, 2.2, 2.3, 3, 4.1, 4.2, 5.1, 6.1, 8 and 9			
Lub Oil	22 m <sup>3</sup>				

# M.V. ARKLOW BANK



General particulars

L o.p.	119,495	mt
L p.p.	116,895	mt
B mid.	14,59	mt
H mid.	8,70	mt
Draught	8,70	mt
Displacement	7,600	ton
T max.	7,160	mt
Deckweight max.	8,400	ton
MOS	84,000	cwt
MOS volume est.	26,40	cwt
Speed est.	13	kts

SHIPYARD FERUS SMIT B.V.  
 Westendorp 1  
 1117 CA Amsterdam, The Netherlands  
 Tel. +31 (0)20 610 1111  
 Fax +31 (0)20 610 1112

GENERAL ARRANGEMENT

SCALE: 1:125 (PLAN) 1:50 (SECTION)  
 SHEET: 24-CO-2073 (REV. NO. 0) GENERAL ARRANGEMENT 24-CO-2073-001