

M.V. Arklow Brave

Port of Registry	Rotterdam, The Netherlands	Yard	Ferus Smit
Call Sign	PBPR	Year of Build	2015
IMO No.	9638800	Class	Bureau Veritas
MMSI No	244730944	Class	Class 1, Hull, Mach,
		Notation	AUT-UMS, IWS, Strength bottom,
Inmarsat-C (telex)	424401050 424401051		Heavy Cargo, General Cargo
Email	abrave@ipsignature3.net	Class No.	20404F
GSM telephone (Dutch)	+316 46 16 53 50	Official No.	00000 Z 2015

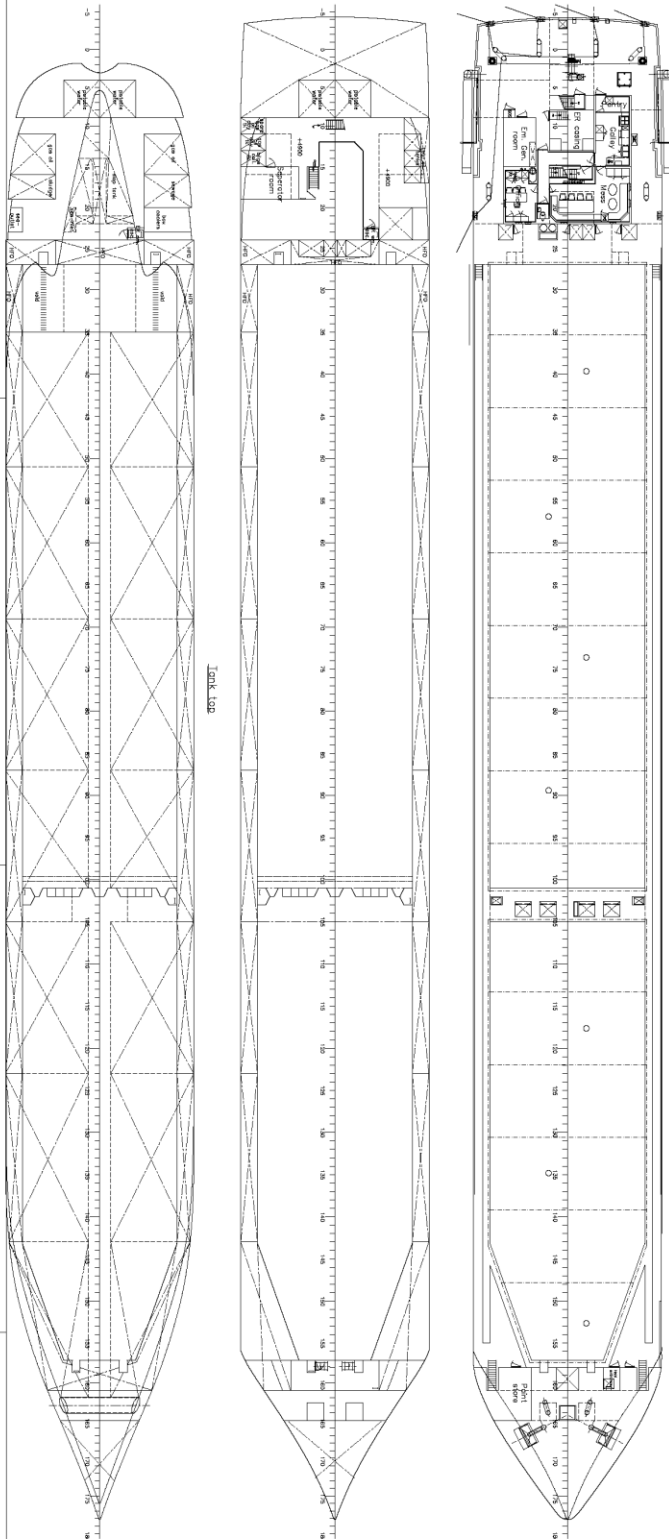
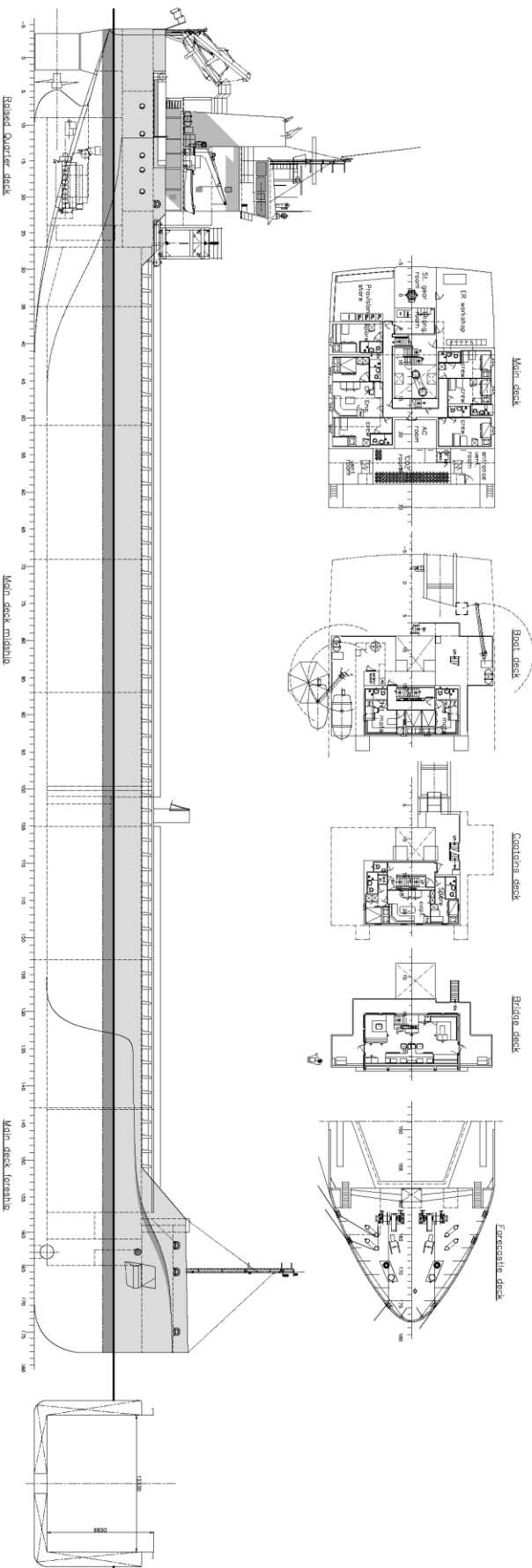


Principal Particulars

mo

Length OA	119.49m	Hold Capacities	Grain & Bale	Main Engine:
Length BP	116.89m		m³	MaK 8M25 2660 kW with Jake Gearbox
Breadth Mld	14.99m	No. 1 hold	4034,7	and Berg controllable pitch propeller
Depth Mld	9.70m	No. 2 hold	5867,9	Auxiliaries:
Summer Load Draft Mld	7.186m	Total	9902,6	2 x Sisu Diesel 213kW 1500 rpm
			349.706	Generators:
Min. airdraft is	21.5m	Portable bulkhead may be placed in		2 x Aux generator 213kW
at max. summer draft of	7.186m	5 positions for cargo separation		1 x Emergency Generator 90kW
Min. coaming ht above WL	3,614m	and storage position		1 x shaft alternator 389kW
GT	5065t	Hatches: Coops & Nieborg pontoon system		Speed: abt. 13.1 knots
NT	2655t	Maximum hatch top loading 1.75t/m ²		Consumption:
Total Deadweight	8660t	Maximum tank top loading 15mt/m ²		In port – abt. 1t Gas Oil per day
Ballast	3547m ³	Bottom strengthened for loading aground		At sea – abt. 11t HFO per day
Fuel – HFO	286m ³	Tank top strengthened for heavy cargoes		Equipment
Fuel – GO	38m ³	CO ₂ fire extinguishing system in hold		GMDSS (A3), 2x radars, navtex,
Fresh Water	53m ³	Engine room fitted with CO ₂ and LAFF		Echo sounder, speed/distance log
Lub Oil	22 m ³	Certified for the carriage of dangerous goods of IMO Class 1.4, 2.1, 2.2, 2.3, 3, 4.1, 4.2, 5.1,6.1,8 and 9		2x GPS receivers, A/P, ECDIS, gyro/magnetic compasses,
				1x electric bowthrustrer 380kW

M.V. ARKLOW BRAVE



General particulars

L o.c.	119,495	mt
L p.p.	116,895	mt
B mid.	14,59	mt
H mid.	8,70	mt
Draught	8,70	mt
Displacement	7,600	ton
T max.	7,160	mt
Deckweight max.	8,400	ton
MOF	84,000	cwt
MOF volume est.	26,40	cwt
Speed est.	13	kts

SHIPYARD FERUS SMIT B.V.
 Westendorp 1
 1118 CA Amsterdam, The Netherlands
 Tel. +31 (0)20 610 1111
 Fax +31 (0)20 610 1112

GENERAL ARRANGEMENT

SCALE	1:125	DATE	15-05-2013
DRAWN	1:125	REVISED	05-04-2013
CHECKED	1:125	DATE	15-11-2012
APPROVED	1:125	DATE	15-11-2012