

M.V. Arklow Valiant



Port of Registry	Rotterdam, The Netherlands	Yard	Royal Bodewes Shipyard
Call Sign	PBRP	Year of Build	2016
IMO No.	9772541	Class	Bureau Veritas
MMSI No	2448710091	Class	Class 1, Hull, Mach,
		Notation	AUT-UMS, IWS,
Inmarsat-C (telex)	424401361		Strength bottom,
	424401362		Heavy Cargo, General Cargo
Email	valiant@arklowships.nl	Class No.	27827Y
Mobile phone	+31615541106	Official No.	24294 Z 2016
VSAT phone	+31852016263		



Principal Particulars

Length OA	86.93m
Length BP/Loadline	84.98/84.98m
Breadth	15.00m
Depth	7.17m
Summer Load Draft (m)	6.35m
Min. airdraft is	18.25m
at max. summer draft of	6.35m
Min. coaming ht above WL	3.39m
GT	2999t
NT	1731t
Displacement	6541t
Total Deadweight	5170t
Ballast	1870m ³
Fuel – HFO	109m ³
Fuel – GO	95m ³
Fresh Water	32m ³
Lub Oil	11m ³

Hold Capacities	Grain & Bale	
	m ³	ft ³
hold	6.258	221.000
Portable bulkhead may be placed in 8 positions for cargo separation and storage position		

Hatches: Coops & Nieborg pontoon system		
Maximum hatch top loading	1.75t/m ²	
Maximum tank top loading	15mt/m ²	

Bottom strengthened for loading aground
Tank top strengthened for heavy cargoes

CO₂ fire extinguishing system in hold
Engine room fitted with CO₂ and LAFF
Certified for the carriage of dangerous goods of IMO Class 1.4, 2.1, 2.2, 2.3, 3, 4.1, 4.2, 5.1, 6.1, 8 and 9

Main Engine:

MaK 6M25 1740 kW with Siemens Gearbox and Berg controllable pitch propeller

Auxiliaries:

2 x Sisu Diesel 154kW 1500 rpm

Generators:

2 x Aux generator 154kW

1 x Emergency Generator 66kW

1 x shaft alternator 348kW

Speed: abt. 12.5 knots

Consumption:

In port – abt. 0,5 t Gas Oil per day

At sea – abt. 7 t HFO per day

Equipment

GMDSS (A3), 2x radars, navtex,

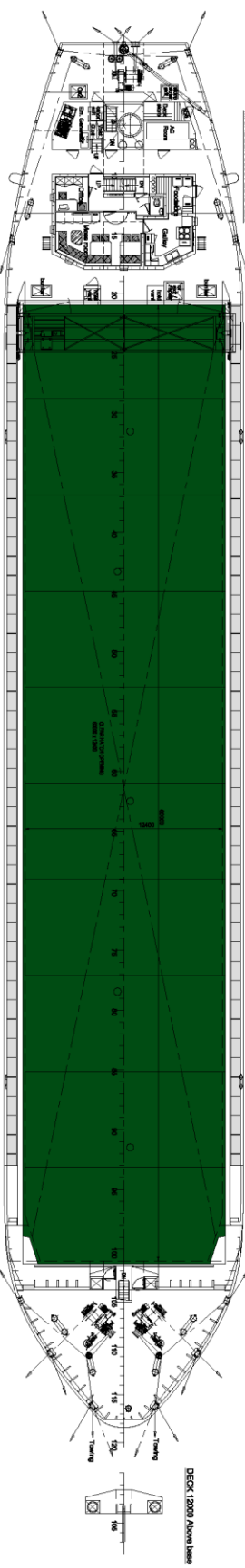
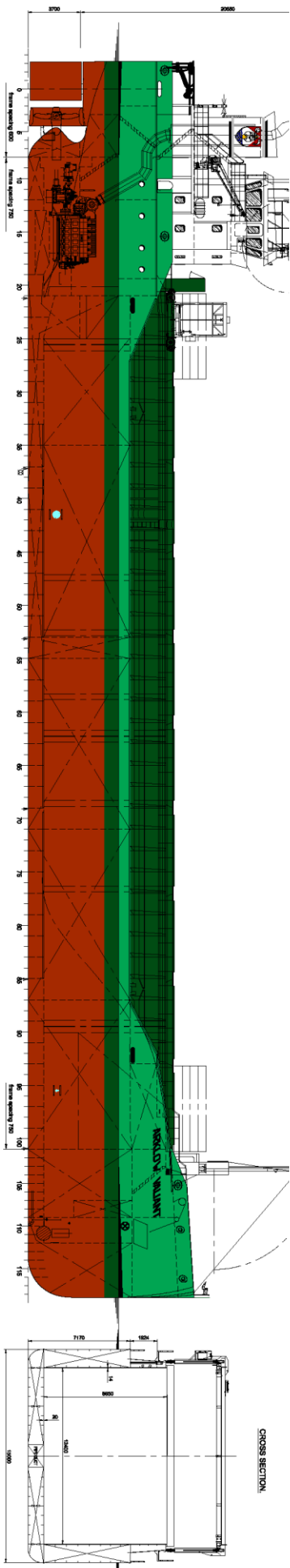
Echo sounder, speed/distance log

2x GPS receivers, A/P, ECDIS,

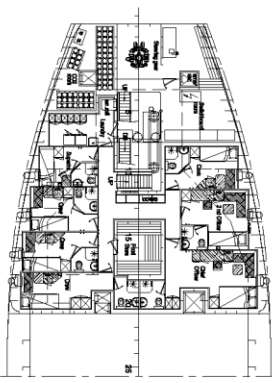
gyro/magnetic compasses,

1x electric bowthrustrer 300 kW

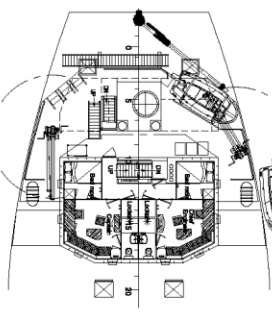
M.V. ARKLOW VALIANT



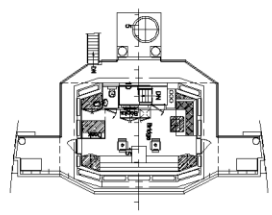
MAINDECK 8000 Above Baseline



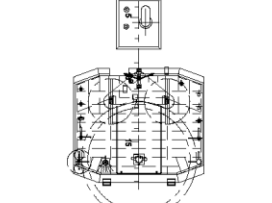
ROATDECK 11800 Above Baseline



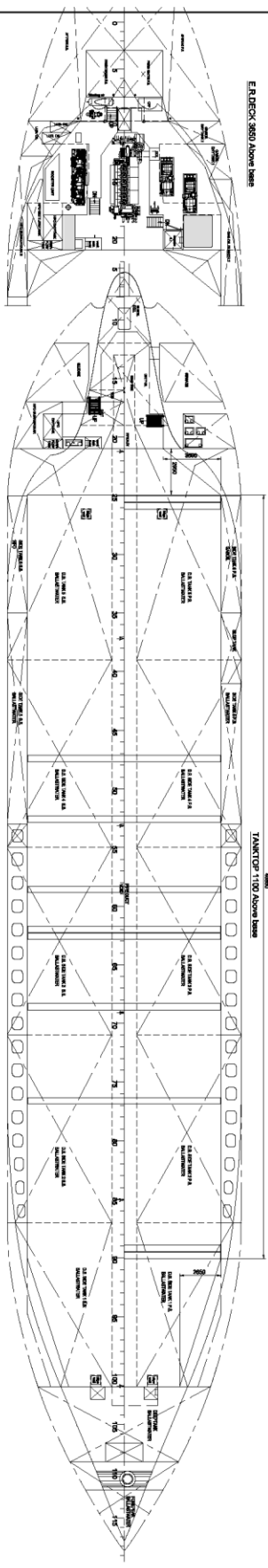
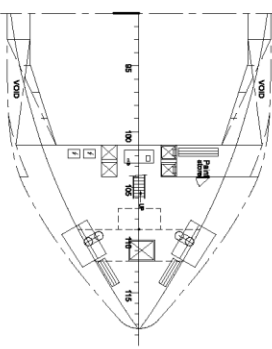
BRIDGEDECK 4250 Above Baseline



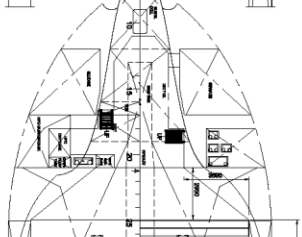
TOPDECK 16850 Above Baseline



MAINDECK 7200 Above Baseline



ER DECK 3650 Above Baseline



MAIN PARTICULARS

Length over all	86.83 m.
Length between perpendiculars	64.80 m.
Length incl. bowsprit	64.80 m.
Length incl. stern	71.15 m.
Depth	7.15 m.
Design draught	del. 6.35 m.
Displacement	del. 5100 ton
* Hold capacity	221 000 cdt.
Tanktop area	696 m ²
Tonnage (del. conv. 1969)	2999 GT
Tank capacities - H ₂ O	del. 109 m ³
Oil	del. 56 m ³
Gas	del. 187 m ³
Main Engine - Main 6024	del. 1740 kW
Twin Screw	del. 12.8 kW

* - Cargo stowage on board
 21-09-2016

BODEWES

 General Arrangement 5100 DWT

 723 000 001 / 0

 21-09-2016