

M.V. Arklow Valley

Port of Registry	Rotterdam, The Netherlands	Yard	Royal Bodewes Shipyard
Call Sign	PBBN	Year of Build	2016
IMO No.	9772553	Class	Bureau Veritas
MMSI No	2448710425	Class	Class 1, Hull, Mach,
		Notation	AUT-UMS, IWS, Strength bottom, Heavy Cargo, General Cargo
Inmarsat-C (telex)	424401423 424401424	Class No.	278228A
Email	valley@arklowships.nl	Official No.	24353 Z 2016
Mobile phone	+31655701939		
VSAT phone	+31856661243		



Principal Particulars

Length pp	84.98m
Length	82.84m
Breadth	15.00m
Depth	7.17m
Summer Load Draft (m)	6.35m
Min. air draft is	18.25m
at max. summer draft of	6.35m
Min. coaming ht above WL	3.39m
GT	2999t
NT	1731t
Displacement	6541t
Total Deadweight	5170t
Ballast	1870m ³
Fuel – HFO	109m ³
Fuel – GO	95m ³
Fresh Water	32m ³
Lub Oil	11m ³

Hold Capacities Grain & Bale		
	m³	ft³
hold	6.258	221.000

Portable bulkhead may be placed in 8 positions for cargo separation and storage position

Hatches: Coops & Nieborg pontoon system	
Maximum hatch top loading	1.75t/m ²
Maximum tank top loading	15mt/m ²

Bottom strengthened for loading aground
Tank top strengthened for heavy cargoes

CO₂ fire extinguishing system in hold
Engine room fitted with CO₂ and LAFF
Certified for the carriage of dangerous goods of IMO Class 1.4, 2.1, 2.2, 2.3, 3, 4.1, 4.2, 5.1, 6.1, 8 and 9

Main Engine:

MaK 6M25 1740 kW with Siemens Gearbox and Berg controllable pitch propeller

Auxiliaries:

2 x Sisu Diesel 154kW 1500 rpm

Generators:

2 x Aux generator 154kW

1 x Emergency Generator 66kW

1 x shaft alternator 348kW

Speed: abt. 12.5 knots

Consumption:

In port – abt. 0,5 t Gas Oil per day

At sea – abt. 7 t HFO per day

Equipment

GMDSS (A3), 2x radars, navtex,

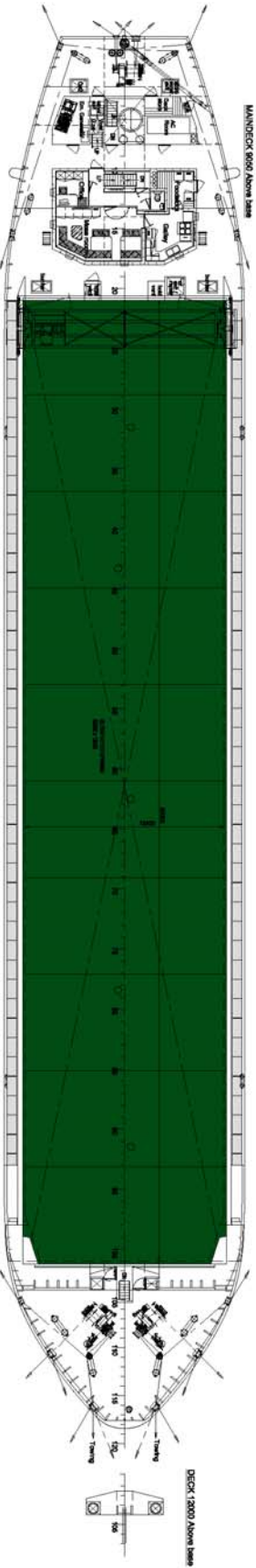
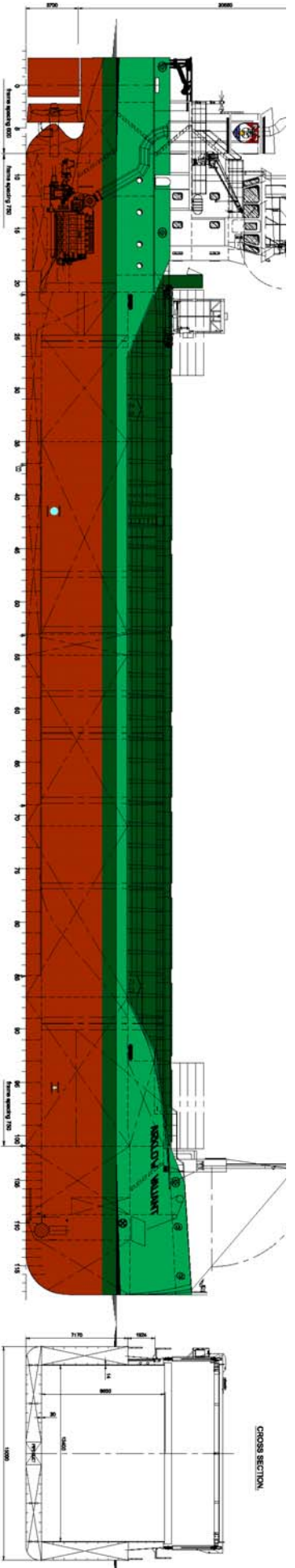
Echo sounder, speed/distance log

2x GPS receivers, A/P, ECDIS,

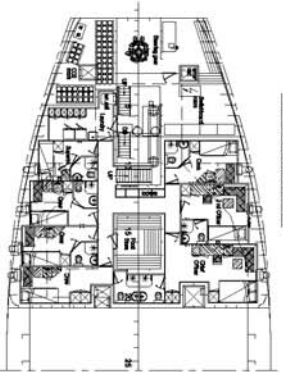
gyro/magnetic compasses,

1x electric bowthruuster 300 kW

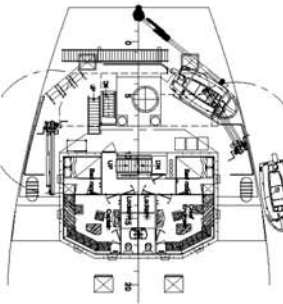
M.V. ARKLOW VALLEY



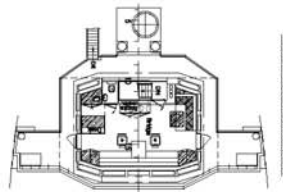
MANDECK 800 Above Baseline



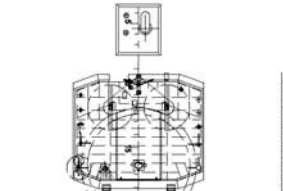
TWENTYDECK 850 Above Baseline



BOATDECK 1160 Above Baseline



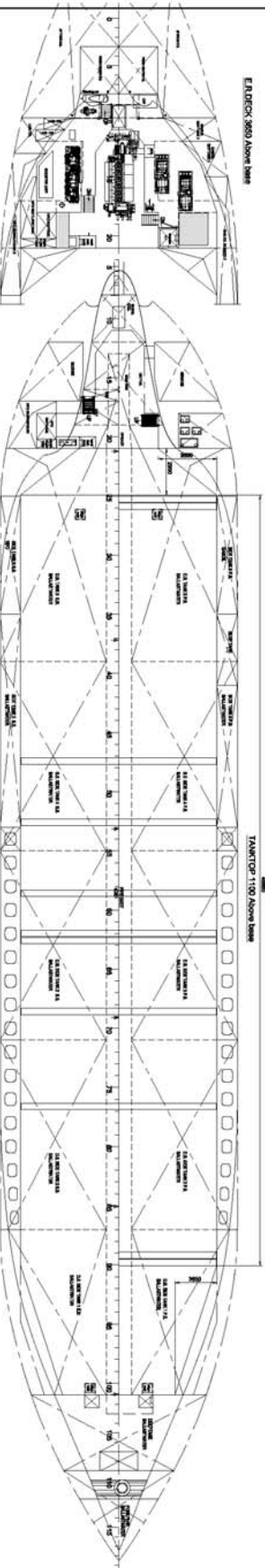
BRIDGEDECK 1420 Above Baseline



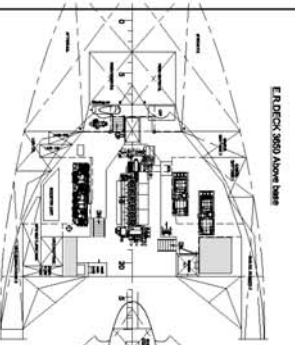
TOPDECK 1680 Above Baseline



MANDECK 700 Above Baseline



TANKTOP 1100 Above Baseline



END DECK 860 Above Baseline

MAIN PARTICULARS

Length over all	86.83 m
Length between perpendiculars	64.80 m
Length max. bottom	64.80 m
Length max. deck	71.50 m
Depth	7.15 m
Design draught	6d. 8.35 m
Displacement	6d. 5100 ton
Hull capacity	271 000 cdt
Tanktop area	696 m ²
Tonnage (incl. crew/185)	2999 GT
Tank capacities: H ₂ O	6d. 109 m ³
Gas	6d. 3673 m ³
Distillate	6d. 1870 m ³
Main Engine: MAN 6G2/5	1740 kW
Tide Signal	6d. 12.8.7c

X = Check/Measured on board

21-09-2016

BODENES

General Arrangement 5102 Draw

723-000-001 10

21-09-2016