

M.V. Arklow Valley



Port of Registry	Rotterdam, The Netherlands	Yard	Royal Bodewes Shipyard
Call Sign	PBBN	Year of Build	2016
IMO No.	9772553	Class	Bureau Veritas
MMSI No	2448710425	Class	Class 1, Hull, Mach,
		Notation	Strength bottom, Heavy Cargo, General Cargo
Inmarsat-C (telex)	424401423 424401424	Class No.	278228A
Email	valley@arklowships.nl	Official No.	24353 Z 2016
Mobile phone	+31655701939		
VSAT phone	+31856661243		



Principal Particulars

Length OA	86.93m
Length BP/ Load line	84.98/ 84.98m
Breadth	15.00m
Depth	7.17m
Summer Load Draft (m)	6.35m
Min. airdraft is	18.25m
at max. summer draft of	6.35m
Min. coaming ht above WL	3.39m
GT	2999t
NT	1731t
Displacement	6541t
Total Deadweight	5170t
Ballast	1870m ³
Fuel – HFO	109m ³
Fuel – GO	95m ³
Fresh Water	32m ³
Lub Oil	11m ³

Hold Capacities	Grain & Bale	
	m ³	ft ³
hold	6.258	221.000

Portable bulkhead may be placed in 8 positions for cargo separation and storage position

Hatches: Coops & Nieborg pontoon system	
Maximum hatch top loading	1.75t/m ²
Maximum tank top loading	15mt/m ²

Bottom strengthened for loading aground
Tank top strengthened for heavy cargoes

CO₂ fire extinguishing system in hold
Engine room fitted with CO₂ and LAFF
Certified for the carriage of dangerous goods of IMO Class 1.4, 2.1, 2.2, 2.3, 3, 4.1, 4.2, 5.1, 6.1, 8 and 9

Main Engine:

MaK 6M25 1740 kW with Siemens Gearbox and CAT propulsiom controllible pitch propeller

Auxiliaries:

2 x Sisu Diesel 154kW 1500 rpm

Generators:

2 x Aux generator 154kW

1 x Emergency Generator 66kW

1 x shaft alternator 348kW

Speed: abt. 12.5 knots

Consumption:

In port – abt. 0,5 t Gas Oil per day

At sea – abt. 7 t HFO per day

Equipment

GMDSS (A3), 2x radars, navtex,

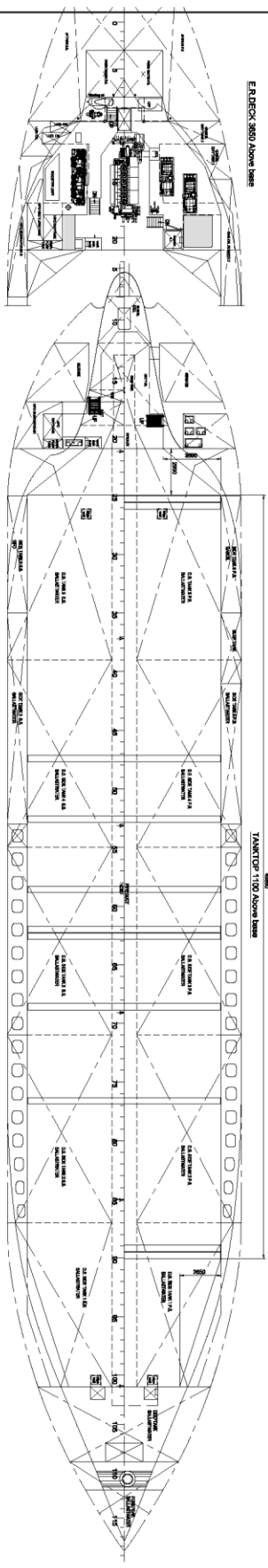
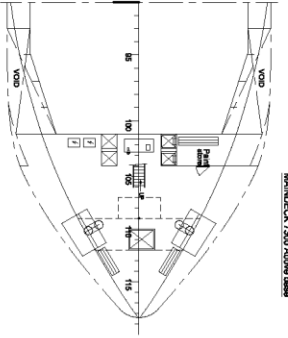
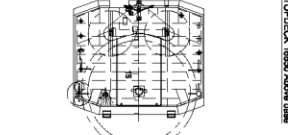
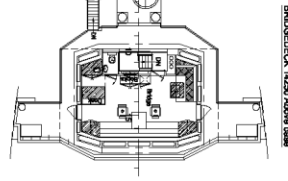
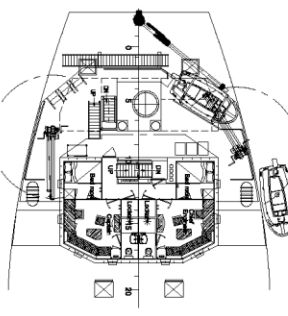
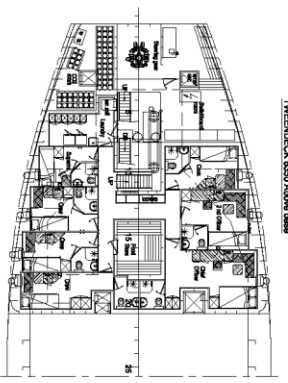
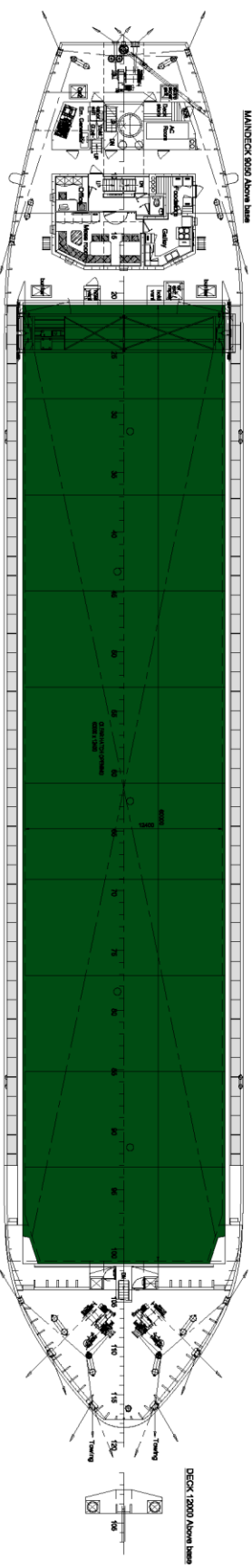
Echo sounder, speed/distance log

2x GPS receivers, A/P, ECDIS,

gyro/magnetic compasses,

1x electric bowthruuster 300 kW

M.V. ARKLOW VALLEY



MAIN PARTICULARS

Length over all	86.83 m.
Length between perpendiculars	64.80 m.
Length incl. bowthruster	64.80 m.
Length incl. stern	71.15 m.
Depth	7.15 m.
Design draught	act. 8.35 m.
Displacement	act. 5100 ton
* Hold capacity	221 000 cdt.
Tanktop area	696 m ²
Tonnage (act. conv. 1983)	2999 GT
Tank capacities - H ₂ O	act. 109 m ³
Oil	act. 56 m ³
Gas	act. 187 m ³
Main Engine - Main Engine	1740 kW
Twin Screw	act. 12.8 kts

* - Cargo stowage on board

21-09-2016

BODEWES

General Arrangement 5100 DWT

723-000-001 / 0

21-09-2016