

M.V. Arklow Valour



Port of Registry	Rotterdam, The Netherlands	Yard	Royal Bodewes Shipyard
Call Sign	PCFP	Year of Build	2017
IMO No.	9772565	Class	Bureau Veritas
MMSI No	244020335	Class	Class 1, Hull, Mach,
		Notation	AUT-UMS, IWS,
Inmarsat-C (telex)	424401460		Strength bottom,
	424401461		Heavy Cargo, General Cargo
Email	valour@arklowships.nl	Class No.	27829B
Mobile phone	+31 54905580	Official No.	24417 Z 2017
VSAT phone	+31 85 666 1246		



Principal Particulars

Length OA	86.93m
Length BP / Load line	84.98/84.98m
Breadth	15.00m
Depth	7.17m
Summer Load Draft (m)	6.35m
Min. air draft is	18.25m
at max. summer draft of	6.35m
Min. coaming ht above WL	3.39m
GT	2999t
NT	1731t
Total Deadweight	5170t
Ballast	1870m ³
Fuel – HFO	109m ³
Fuel – GO	95m ³
Fresh Water	32m ³
Lub Oil	11m ³

Hold Capacities Grain & Bale		
	m³	ft³
hold	6.258	221.000

Portable bulkhead may be placed in 8 positions for cargo separation and storage position

Hatches: Coops & Nieborg pontoon system	
Maximum hatch top loading	1.75t/m ²
Maximum tank top loading	15mt/m ²

Bottom strengthened for loading aground
Tank top strengthened for heavy cargoes

CO₂ fire extinguishing system in hold
Engine room fitted with CO₂ and LAFF
Certified for the carriage of dangerous goods of IMO Class 1.4, 2.1, 2.2, 2.3, 3, 4.1, 4.2, 5.1, 6.1, 8 and 9

Main Engine:

MaK 6M25 1740 kW with Siemens Gearbox and CAT propulsion controllable pitch propeller

Auxiliaries:

2 x Sisu Diesel 154kW 1500 rpm

Generators:

2 x Aux generator 154kW

1 x Emergency Generator 66kW

1 x shaft alternator 348kW

Speed: abt. 12.5 knots

Consumption:

In port – abt. 0,5 t Gas Oil per day

At sea – abt. 7 t HFO per day

Equipment

GMDSS (A3), 2x radars, navtex,

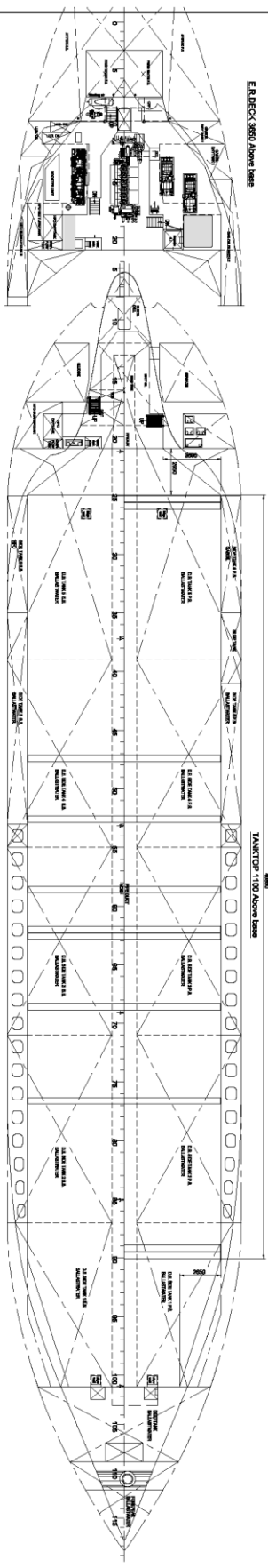
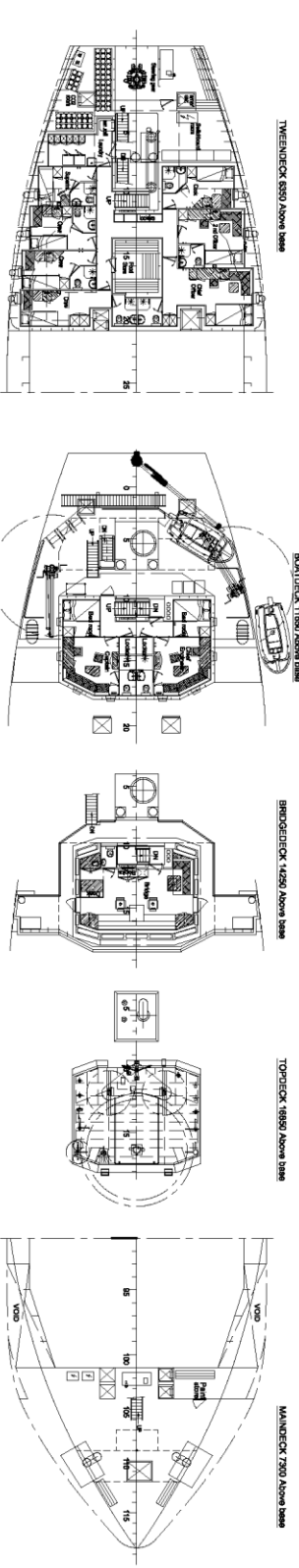
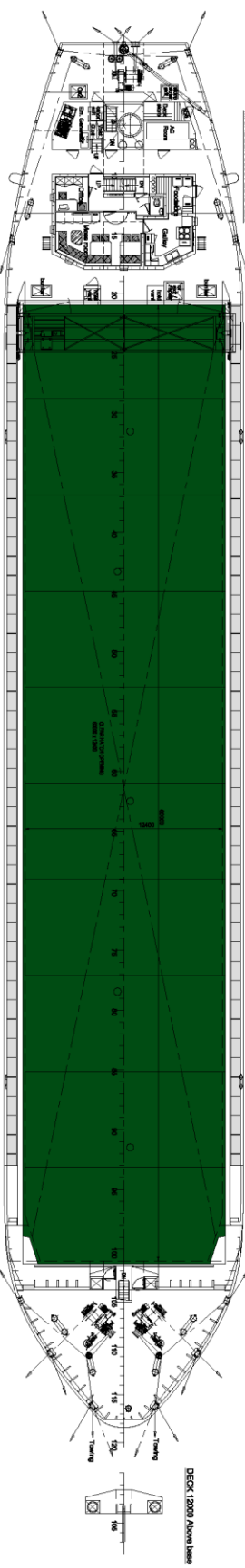
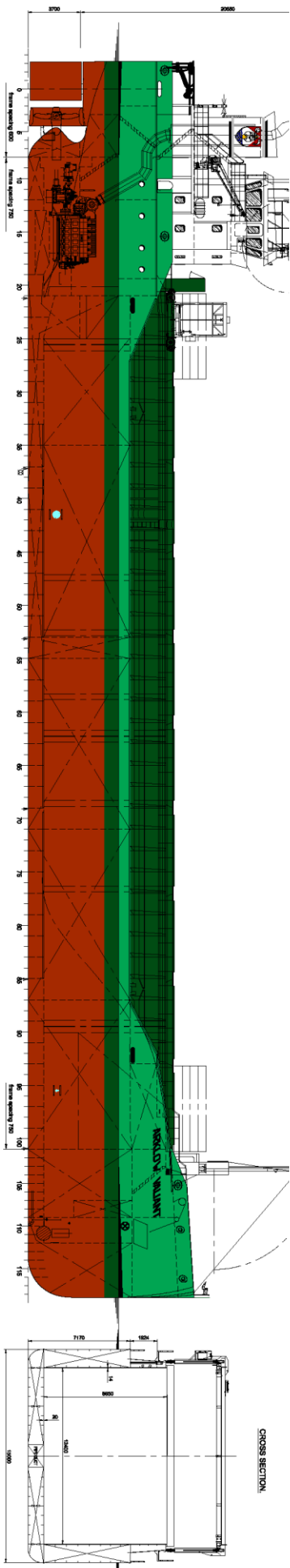
Echo sounder, speed/distance log

2x GPS receivers, A/P, ECDIS,

gyro/magnetic compasses,

1x electric bowthruster 300 kW

M.V. ARKLOW VALALOUR



MAIN PARTICULARS

Length over all	86.83 m.
Length between perpendiculars	64.80 m.
Length incl. bowsprit	64.80 m.
Length incl. stern	71.15 m.
Depth	7.15 m.
Design draught	del. 8.35 m.
Displacement	del. 5100 ton
* Hold capacity	221 000 cdt.
Tanktop area	696 m ²
Tonnage (del. conv. 1969)	2999 GT
Tank capacities - H ₂ O	del. 109 m ³
Oil	del. 567 m ³
Gas	del. 187 m ³
Ballastwater	del. 1870 m ³
Main Engine - Main Engine	1740 kW
Twin Screw	del. 12.8 kts

* - Cargo hold built in on board

BOEVEES

General Arrangement 5100 DWT

21-08-2016

723 000 001 10