

# M.V. Arklow Vanguard

Port of Registry	Rotterdam, The Netherlands	Yard	Royal Bodewes Shipyard
Call Sign	PDAY	Year of Build	2017
IMO No.	9772577	Class	Bureau Veritas
MMSI No	244050844	Class	Class 1, Hull, Mach,
		Notation	AUT-UMS, IWS, Strength bottom, Heavy Cargo, General Cargo
Inmarsat-C (telex)	424401630 424401631	Class No.	28803K
Email	vanguard@arklowships.nl	Official No.	Z 2017
Mobile phone	+31 615200775		
VSAT phone	+31 856661261		



## Principal Particulars

Length pp	84.98m
Length	82.84m
Breadth	15.00m
Depth	7.17m
Summer Load Draft (m)	6.35m
Min. airdraft is	18.25m
at max. summer draft of	6.35m
Min. coaming ht above WL	3.39m
GT	2999t
NT	1731t
Total Deadweight	5170t
Ballast	1870m <sup>3</sup>
Fuel – HFO	109m <sup>3</sup>
Fuel – GO	95m <sup>3</sup>
Fresh Water	32m <sup>3</sup>
Lub Oil	11m <sup>3</sup>

<b>Hold Capacities</b>	Grain & Bale	
	<b>m<sup>3</sup></b>	<b>ft<sup>3</sup></b>
hold	6.258	221.000

Portable bulkhead may be placed in 8 positions for cargo separation and storage position

<b>Hatches:</b> Coops & Nieborg pontoon system	
Maximum hatch top loading	1.75t/m <sup>2</sup>
Maximum tank top loading	15mt/m <sup>2</sup>

Bottom strengthened for loading aground  
Tank top strengthened for heavy cargoes

CO<sub>2</sub> fire extinguishing system in hold  
Engine room fitted with CO<sub>2</sub> and LAFF  
Certified for the carriage of dangerous goods of IMO Class 1.4, 2.1, 2.2, 2.3, 3, 4.1, 4.2, 5.1, 6.1, 8 and 9

### Main Engine:

MaK 6M25 1740 kW with Siemens Gearbox and Berg controllable pitch propeller

### Auxiliaries:

2 x SiSU Diesel 154kW 1500 rpm

### Generators:

2 x Aux generator 154kW

1 x Emergency Generator 66kW

1 x shaft alternator 348kW

**Speed:** abt. 12.5 knots

### Consumption:

In port – abt. 0,5 t Gas Oil per day

At sea – abt. 7 t HFO per day

### Equipment

GMDSS (A3), 2x radars, navtex,

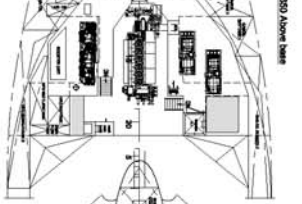
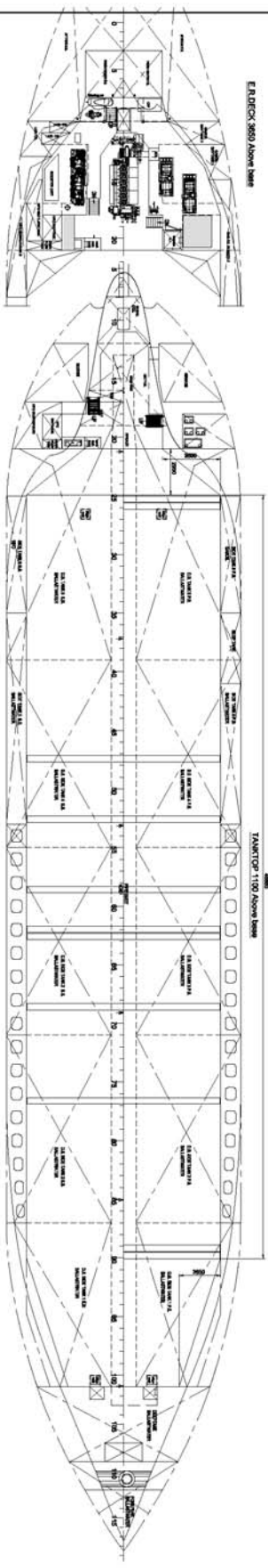
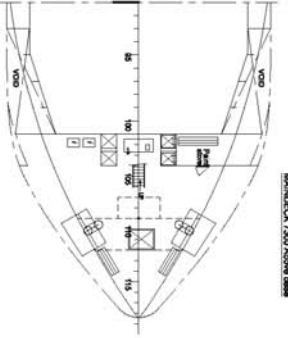
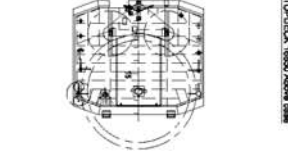
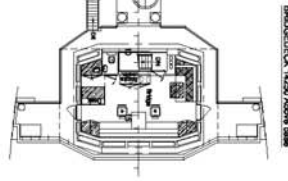
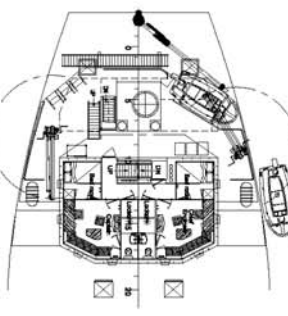
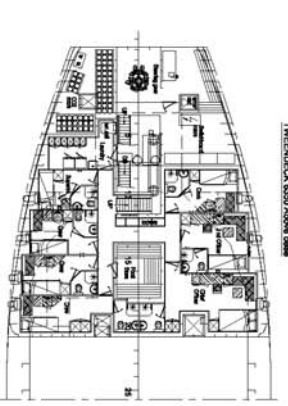
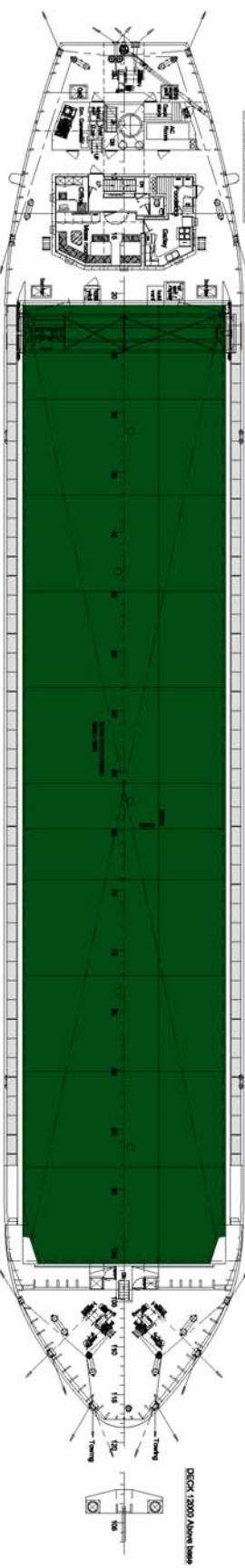
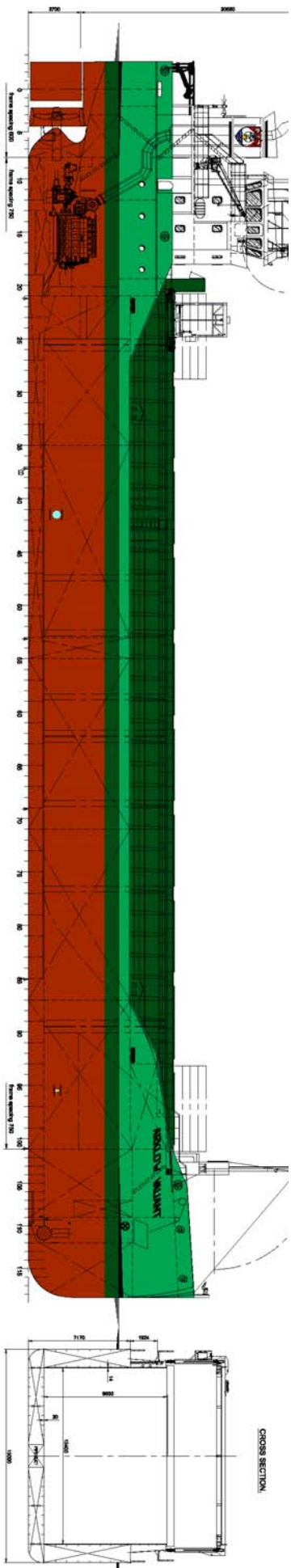
Echo sounder, speed/distance log

2x GPS receivers, A/P, ECDIS,

gyro/magnetic compasses,

1x electric bowthrustrer 300 kW

# M.V. ARKLOW VANGUARD



**MAIN PARTICULARS**

Length over all	86.83 m
Length between perpendiculars	64.80 m
Length rec. bottom	64.80 m
Length (incl. bow thruster)	71.50 m
Depth	7.15 m
Design draught	6d1. 8.35 m
Displacement	6d1. 5100 ton
Hull capacity	221 000 dwt
Tanktop area	696 m <sup>2</sup>
Tonnage (incl. crew/180)	2999 GT
Tank capacities: H <sub>2</sub> O	6d1. 109 m <sup>3</sup>
Oil	6d1. 3673 m <sup>3</sup>
Ballastwater	6d1. 1870 m <sup>3</sup>
Main Engine: MAN 6G25	1740 kW
Twin Screw	6d1. 12.8 5/c
* 2. Chassis/Shaft and drive	

**21-09-2016**

**BODENES**

General Arrangement (GA) Draw

723-000-001 10