

M.V. Arklow Venture



Port of Registry	Rotterdam, The Netherlands	Yard	Royal Bodewes Shipyard
Call Sign	PDFH	Year of Build	2017
IMO No.	9772589	Class	Bureau Veritas
MMSI No	244130065	Class	Class 1, Hull, Mach,
		Notation	AUT-UMS, IWS, Strength bottom, Heavy Cargo, General Cargo
Inmarsat-C (telex)	424401680 424401681	Class No.	28804L
Email	venture@arklowships.nl	Official No.	24565 Z 2017
Mobile phone	+31 615351556		
VSAT phone	+31 856661266		



Principal Particulars

Length OA	86.93m
Length BP/Load line	84.98/84.98m
Breadth	15.00m
Depth	7.17m
Summer Load Draft (m)	6.35m
Min. airdraft is	18.25m
at max. summer draft of	6.35m
Min. coaming ht above WL	3.39m
GT	2999t
NT	1731t
Total Deadweight	5170t
Ballast	1870m ³
Fuel – HFO	109m ³
Fuel – GO	95m ³
Fresh Water	32m ³
Lub Oil	11m ³

Hold Capacities	Grain & Bale	
	m ³	ft ³
hold	6.258	221.000

Portable bulkhead may be placed in 8 positions for cargo separation and storage position

Hatches: Coops & Nieborg pontoon system

Maximum hatch top loading	1.75t/m ²
Maximum tank top loading	15mt/m ²

Bottom strengthened for loading aground
Tank top strengthened for heavy cargoes

CO₂ fire extinguishing system in hold
Engine room fitted with CO₂ and LAFF
Certified for the carriage of dangerous goods of IMO Class 1.4, 2.1, 2.2, 2.3, 3, 4.1, 4.2, 5.1, 6.1, 8 and 9

Main Engine:

MaK 6M25 1740 kW with Siemens Gearbox and Berg controllable pitch propeller

Auxiliaries:

2 x SiSU Diesel 154kW 1500 rpm

Generators:

2 x Aux generator 154kW

1 x Emergency Generator 66kW

1 x shaft alternator 348kW

Speed: abt. 12.5 knots

Consumption:

In port – abt. 0,5 t Gas Oil per day

At sea – abt. 7 t HFO per day

Equipment

GMDSS (A3), 2x radars, navtex,

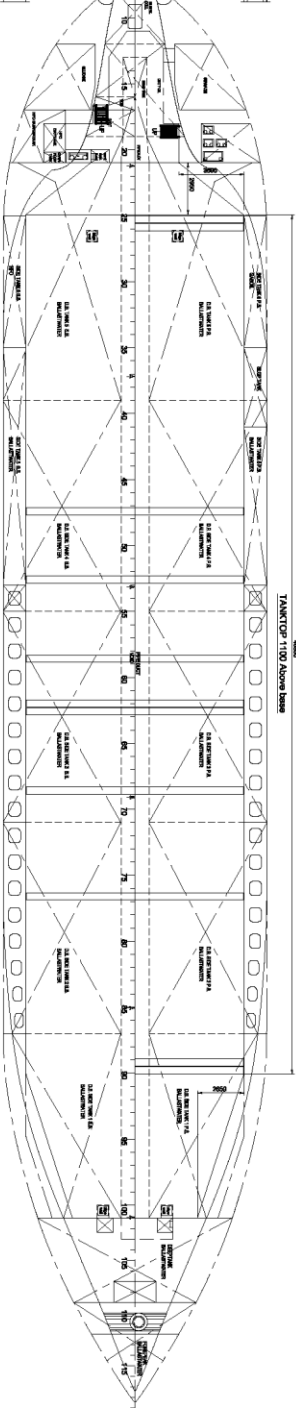
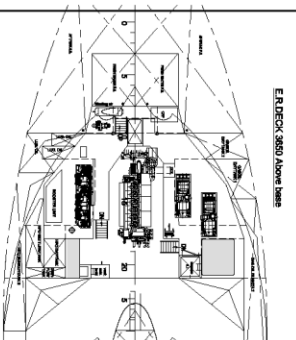
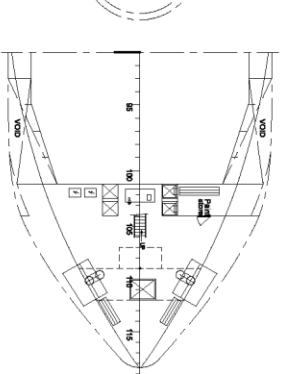
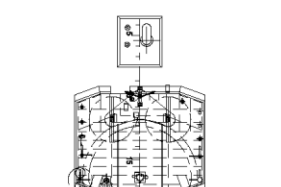
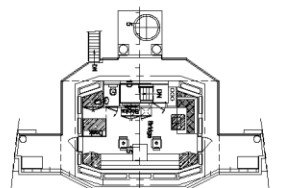
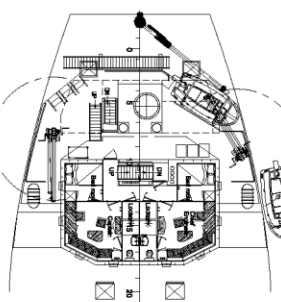
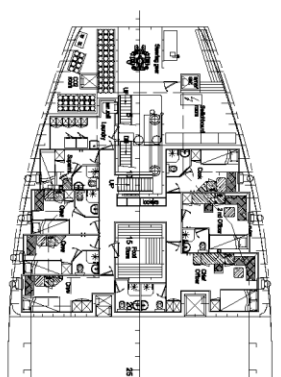
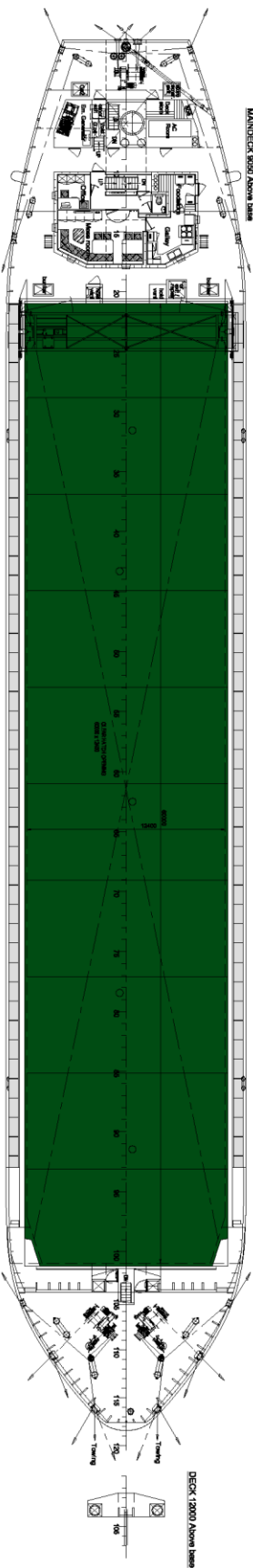
Echo sounder, speed/distance log

2x GPS receivers, A/P, ECDIS,

gyro/magnetic compasses,

1x electric bowthruster 300 kW

M.V. ARKLOW VENTURE



MAIN PARTICULARS

Length over all	86.83 m
Length between perpendiculars	64.80 m
Length incl. bowsprit	64.80 m
Length incl. stern	71.15 m
Draft	7.15 m
Design draught	del. 8.35 m
Displacement	del. 5100 t/m
* Hold capacity	221 000 cdt
Tanktop area	696 m ²
Tonnage (incl. crew/168)	2999 GT
Tank capacities - H ₂ O	del. 109 m ³
Oil	del. 567 m ³
Gas	del. 1870 m ³
Main Engine - Main 6K22	1740 kW
Twin Stems	del. 12.8 t/c

* - Cargo holds are on board

21-08-2016



 General Arrangement 5100 DWT

 723 000 001 / 0

 21-08-2016