

M.V. Arklow Bank

Port of Registry	Rotterdam, The Netherlands	Yard	Ferus Smit
Call Sign	PCWW	Year of Build	2014
IMO No.	9638769	Class	Bureau Veritas
MMSI No	244810323	Class	Class 1, Hull, Mach,
		Notation	AUT-UMS, IWS, Strength bottom,
Inmarsat-C (telex)	424400742 424400473		Heavy Cargo, General Cargo
Email	abank@ipsignature3.net	Class No.	20400 B
GSM telephone (Dutch)	+31621230970	Official No.	23765 Z 2014

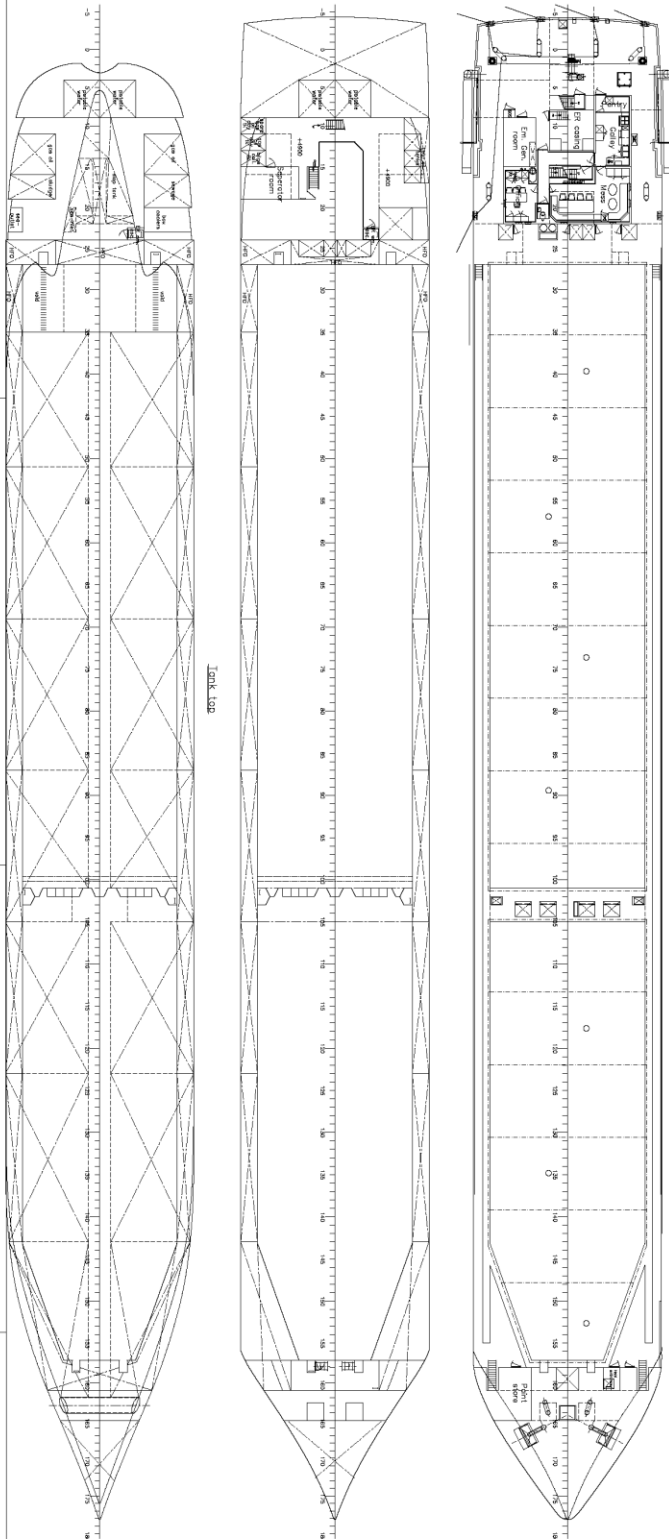
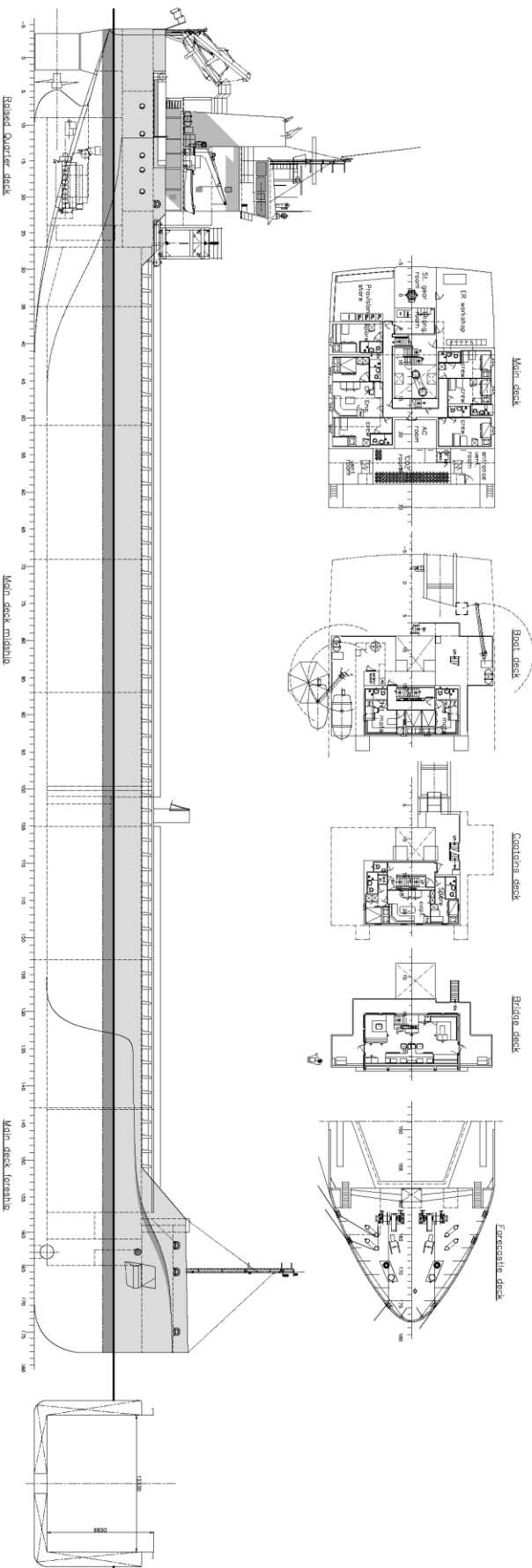


Principal Particulars

mo

Length OA	119.49m	Hold Capacities	Grain & Bale	Main Engine:
Length BP	116.89m		m³	ft³
Breadth Mld	14.99m	No. 1 hold	4034,7	142.484
Depth Mld	9.70m	No. 2 hold	5867,9	207.222
Summer Load Draft	7.186m	Total	9902,6	349.706
		Portable bulkhead may be placed in		Auxiliaries:
Min. airdraft is	21.5m	5 positions for cargo separation		2 x Sisu Diesel 213kW 1500rpm
at max. summer draft of	7.186m	and storage position		Generators:
Min. coaming ht above WL	3,614m	Hatches: Coops & Nieborg pontoon system		2 x Aux generator 213kW
GT	5065t	Maximum hatch top loading	1.75t/m ²	1 x Emergency Generator 90kW
NT	2655t	Maximum tank top loading	15mt/m ²	1 x shaft alternator 389kW
Displacement	10815t	Bottom strengthened for loading aground		Speed: abt. 13.1 knots
Total Deadweight	8660t	Tank top strengthened for heavy cargoes		Consumption:
Ballast	3547m ³	CO ₂ fire extinguishing system in hold		In port – abt. 1t Gas Oil per day
Fuel – HFO	286m ³	Engine room fitted with CO ₂ and LAFF		At sea – abt. 11t HFO per day
Fuel – GO	38m ³	Certified for the carriage of dangerous goods of IMO Class 1.4, 2.1, 2.2, 2.3, 3, 4.1, 4.2, 5.1, 6.1, 8 and 9		Equipment
Fresh Water	53m ³			GMDSS (A3), 2x radars, navtex, Echo sounder, speed/distance log
Lub Oil	22 m ³			2x GPS receivers, A/P, ECDIS, gyro/magnetic compasses,
				1x electric bowthrustrer 380kW

M.V. ARKLOW BANK



General particulars

L o.p.	119,495	mt
L p.p.	116,895	mt
B mid.	14,59	mt
T mid.	8,70	mt
Draught	7,60	ton
Decoheight	7,160	mt
Decoheight max.	8,400	ton
Decoheight min.	8,400	ton
MOS	2640	cm
MOS volume est.	2640	cm
Speed est.	13	kts

SHIPYARD FERUS SMIT B.V.
 Westendorpweg 1
 1118 CA Amsterdam, The Netherlands
 Tel. +31 (0)20 486 2200
 Fax +31 (0)20 486 2201
 E-mail: info@ferus.nl

GENERAL ARRANGEMENT

SCALE	1:125	DATE	15-05-2013
NO.	24-01-2013	REV.	15-05-2013
DESIGNER	FERUS SMIT B.V.	PROJECT	M.V. ARKLOW BANK
CHECKED	15-05-2013	DATE	15-05-2013