

# M.V. Arklow Brave

Port of Registry	Rotterdam, The Netherlands	Yard	Ferus Smit
Call Sign	PBPR	Year of Build	2015
IMO No.	963879	Class	Bureau Veritas
MMSI No	244730944	Class	Class 1, Hull, Mach,
		Notation	AUT-UMS, IWS, Strength bottom,
Inmarsat-C (telex)	424401050 424401051		Heavy Cargo, General Cargo
Email	abrave@ipsignature3.net	Class No.	20404F
GSM telephone (Dutch)	+316 3227 8670	Official No.	00000 Z 2015

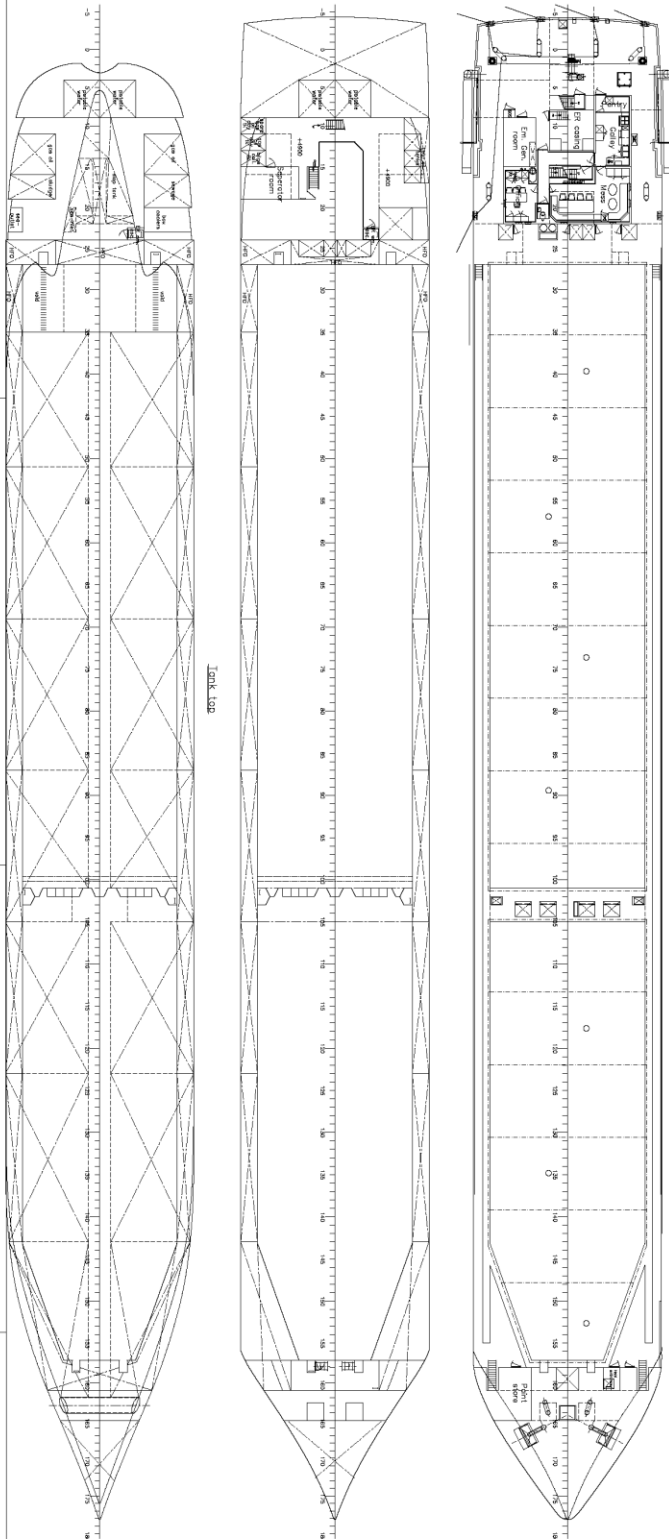
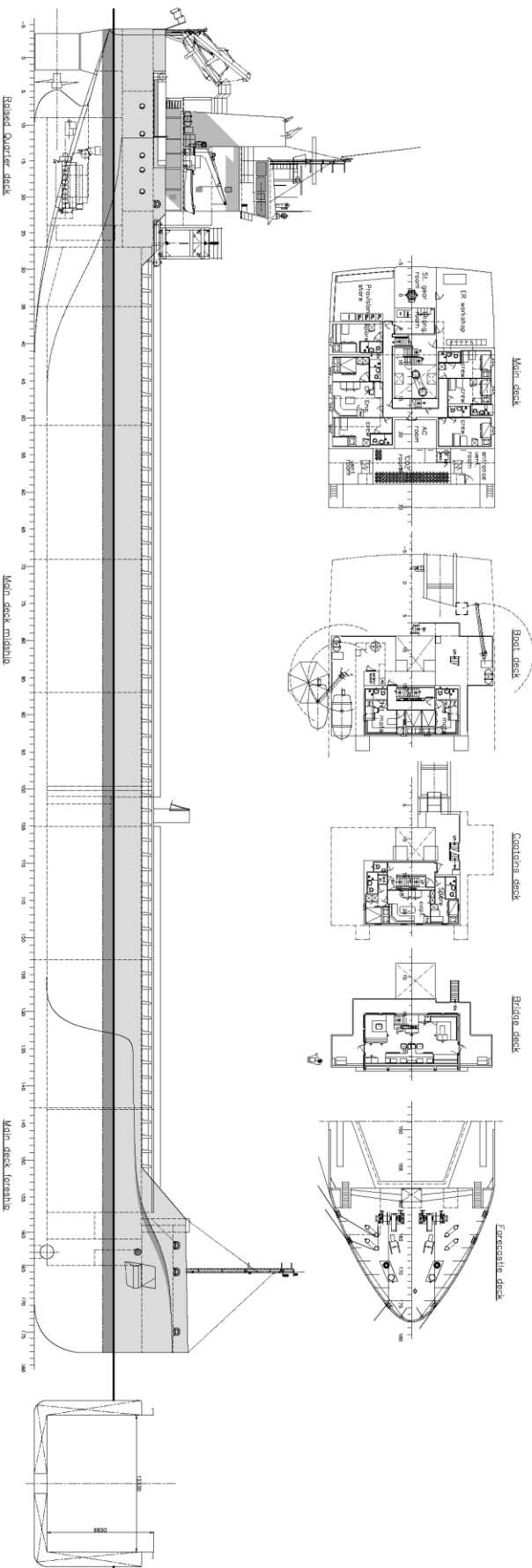


## Principal Particulars

mo

Length OA	119.49m	<b>Hold Capacities</b> Grain & Bale		<b>Main Engine:</b>	
Length BP	116.89m		<b>m<sup>3</sup></b> <b>ft<sup>3</sup></b>	MaK 8M25 2660 kW with Jake Gearbox	
Breadth Mld	14.99m	No. 1 hold	4034,7	142.484	and Berg controllable pitch propeller
Depth Mld	9.70m	No. 2 hold	5867,9	207.222	<b>Auxiliaries:</b>
Summer Load Draft Mld	7.186m	<b>Total</b>	9902,6	349.706	2 x Sisu Diesel 213kW 1500 rpm
		Portable bulkhead may be placed in			<b>Generators:</b>
Min. airdraft is	21.5m	5 positions for cargo separation			2 x Aux generator 213kW
at max. summer draft of	7.186m	and storage position			1 x Emergency Generator 90kW
Min. coaming ht above WL	3,614m				1 x shaft alternator 389kW
GT	5065t	<b>Hatches:</b> Coops & Nieborg pontoon system			<b>Speed:</b> abt. 13.1 knots
NT	2655t	Maximum hatch top loading	1.75t/m <sup>2</sup>		<b>Consumption:</b>
Displacement	10815t	Maximum tank top loading	15mt/m <sup>2</sup>		In port – abt. 1t Gas Oil per day
Total Deadweight	8660t	Bottom strengthened for loading aground			At sea – abt. 11t HFO per day
Ballast	3547m <sup>3</sup>	Tank top strengthened for heavy cargoes			<b>Equipment</b>
Fuel – HFO	286m <sup>3</sup>	CO <sub>2</sub> fire extinguishing system in hold			GMDSS (A3), 2x radars, navtex,
Fuel – GO	38m <sup>3</sup>	Engine room fitted with CO <sub>2</sub> and LAFF			Echo sounder, speed/distance log
Fresh Water	53m <sup>3</sup>	Certified for the carriage of dangerous goods of IMO Class 1.4, 2.1, 2.2, 2.3, 3, 4.1, 4.2, 5.1,6.1,8 and 9			2x GPS receivers, A/P, ECDIS,
Lub Oil	22 m <sup>3</sup>				gyro/magnetic compasses,
					1x electric bowthrustrer 380kW

# M.V. ARKLOW BRAVE



General particulars

L o.p.	119,495	mt
B p.p.	116,895	mt
B mid.	14,59	mt
T mid.	8,70	mt
Draught	11,40	mt
Displacement	7600	ton
T max.	7,160	mt
Deckweight max.	8400	ton
MOG	8400	mt
MOG volume est.	2640	cbm
Speed est.	13	kts

SHIPYARD FERUS SMIT B.V.  
 Westendorp 1  
 1117 CA Amsterdam, The Netherlands  
 T +31 (0)20 674 1111 F +31 (0)20 674 1112  
 E ferus@ferus.nl www.ferus.nl

GENERAL ARRANGEMENT

SCALE	1:125	DATE	15-05-2013
NO.	1-2013	REV.	01
PROJECT	24-01-2013	NO.	0
DESIGNER	FERUS SMIT B.V.	NO.	1000-1
CLIENT	FERUS SMIT B.V.	NO.	1000-1