

M.V. Arklow Bridge



Port of Registry	Rotterdam, The Netherlands	Yard	Bodewes Shipyards B.V. , The Netherlands
Call Sign	PCKD	Year of Build	2011
IMO No.	9433389	Class	B.V
MMSI No	246786000	Class	+100A1 + LMC + UMS ShipRight (SCM)
Inmarsat-C (telex)	+(581) 424678610 +(581) 424678611	Notation	Ice Class Swedish/Finish 1A
Email	PCKD@globeemail.com	Class No.	9433389
GSM telephone (Dutch)	+31 6 55348442	Official No.	23073 Z 2011



Principal Particulars

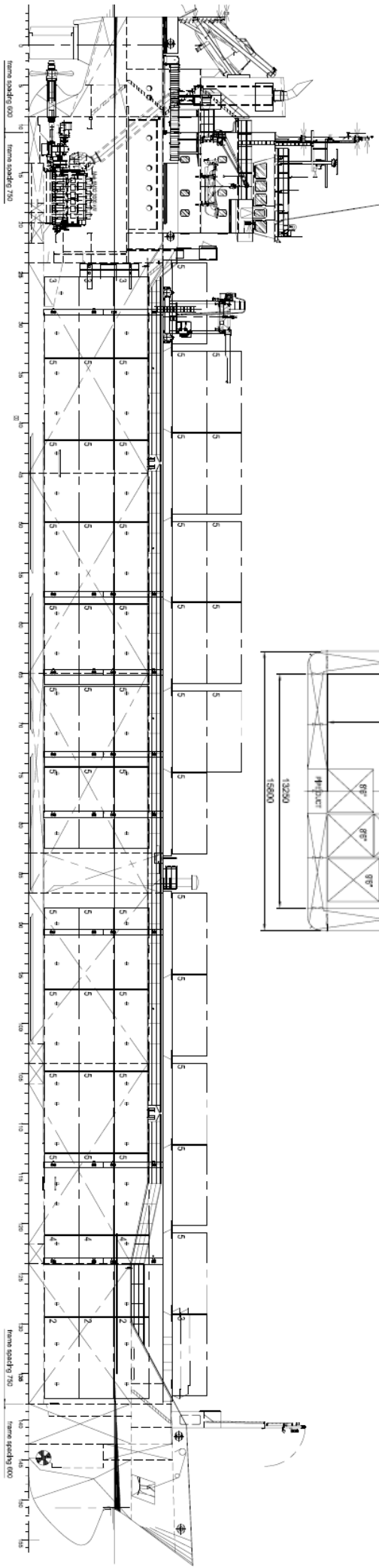
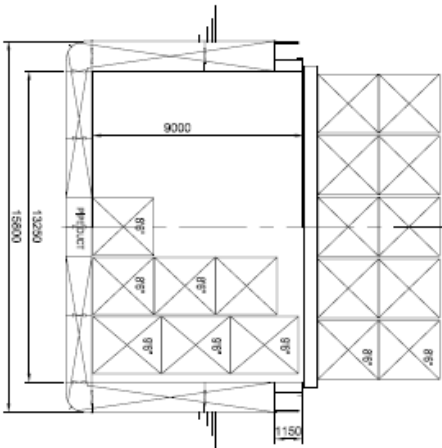
Length OA	116.08m
Length BP	109.78m
Breadth Mld	15.80m
Depth Mld	7.65m
Summer Load Draft	6.40m
Ice Draft	5.70m
Min. airdraft is	21.30m
at max. ballast draft of	5.25m
Min. coaming ht above WL	4.80m
GT	4723t
NT	2724t
Displacement	9637t
Total Deadweight	7575t
Ballast	3120 m ³
Fuel – HFO	343m ³
Fuel – GO	51m ³
Fresh Water	58m ³
Lub Oil	12 m ³

Hold Capacities	Grain & Bale	
		m ³ ft ³
No. 1 hold	4205.9	148523
No. 2 hold	5267.2	186001
Total	9473.1	334524
Portable bulkhead may be placed in 8 positions for cargo separation		
Both cargo holds fitted with de-humidifier		
Containers:		TEU
Hold		177
Deck		88
Hatches: Coops & Nieborg pontoon system		
Maximum hatch top loading		1.5t/m ²
Maximum tank top loading		15mt/m ²
Bottom strengthened for loading aground		
Tank top strengthened for heavy cargoes		
Engine room bulkhead A60 insulated		
CO ₂ fire extinguishing system in hold		
Engine room fitted with CO ₂ and LAFF		
Certified for the carriage of dangerous goods of IMO Class 4.1, 4.2, 4.3, 5.1, And 5.2 (packaged)		

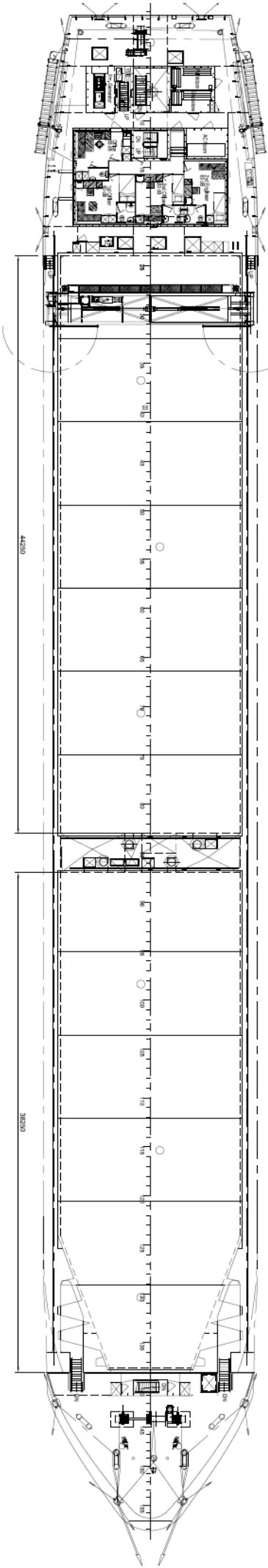
Main Engine:	MaK 6M32C 2999kW with Renk Gearbox and Berg controllable pitch propeller
Auxiliaries:	2 x Sisu Diesel 180kW 1500rpm
Generators:	2 x Leroy Somer 210kW 1 x Emergency Generator 96kW 1 x shaft alternator 348kW
Speed:	abt. 12.5 knots
Consumption:	In port – abt. 1t Gas Oil per day At sea – abt. 11t HFO per day
Equipment	GMDSS (A3), 2x radars, navtex, Echo sounder, speed/distance log 2x GPS receivers, A/P, ECDIS, gyro/magnetic compasses, 1x electric bowthrustrer 300kW

M.V. ARKLOW BRIDGE

CROSS SECTION



POOPDECK 10050 ab base



COAMING 10050 ab base

FORECASTLEDECK