

M.V. Arklow Rebel



Port of Registry	Arklow	Yard	Barkmeijer Stroobos, Holland
Call Sign	E I V G	Year of Build	2005
Phone	+881 631854099 (IRIDIUM)		
Email	arebel@arkship.ie		
IMO No.	9291731	Class	Bureau Veritas
MMSI No.	250000444	Class Notation	+ I 3/3E + CARGOSHIP DEEP SEA + MACH + AUT-MS Heavy Cargo BRG
Inmarsat-C (Telex)	+(581)425000071	Class No.	04204W
GSM telephone (Irish)	+ 353 (87) 2904558	Official No.	403347



Principal Particulars

Length OA	89.99m
Length BP	84.98m
Breadth Mld	14.00m
Breadth Ext	14.18m
Depth Mld	7.15m
Summer Load Draft	6.1m
Min. airdraft is	20.60m
at max. ballast draft of	4.40m
min. coaming ht above waterline	6.40m
GT	2999
NT	1639
Displacement	6392t
Total Deadweight	4933t
Ballast	1839m ³
Fuel – HFO	150.52m ³
Fuel - GO	36.42m ³
Fresh Water	88m ³
Lub Oil	8m ³

12/04/2013

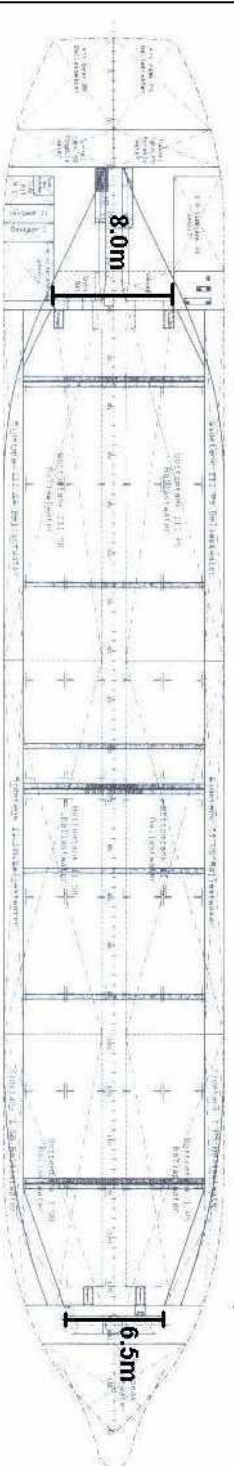
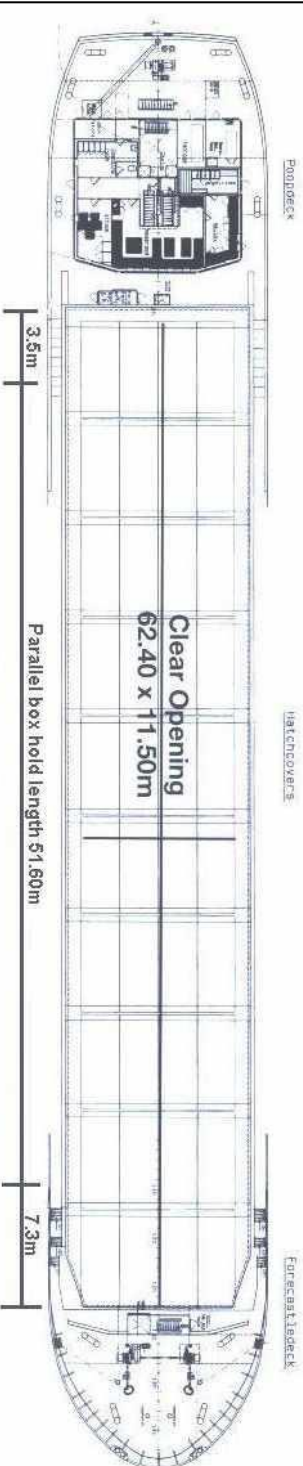
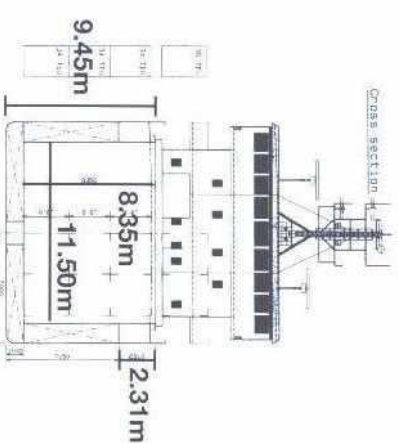
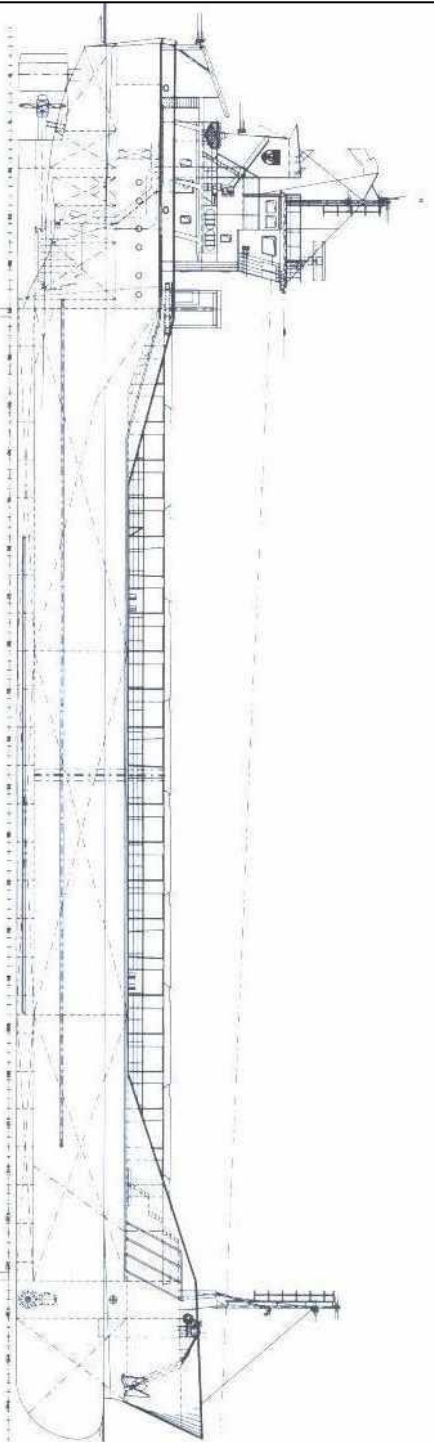
Hold Capacity: Grain & Bale	
Incl. bulkheads	207391 ft ³ /5873 m ³
B/H stowed midships	206541 ft ³ /5849 m ³
Portable bulkheads (2) may be placed in	
9 positions for cargo separation	
Containers:	TEU
Hold	102
Deck	36
Hatches: Roden Staal pontoon system	
Maximum hatch top loading	1.5t/m ²
Maximum tank top loading	15mt/m ²
Bottom strengthened for loading aground	
Tank top strengthened for heavy cargoes	
Engine room bulkhead A60 insulated	
CO ₂ fire extinguishing system in hold	
Engine room fitted with CO ₂ and flexi-fog	
Certified for the carriage of dangerous goods of IMO Class 4.1, 4.2, 4.3, 5.1 and 5.2 (packaged)	

Photo courtesy of Mark Knopplow

Main Engine:	MaK 6M25 1499kW with Scana Volda Gearbox and controllable pitch propeller
Auxiliaries:	2 x Sisu Diesel 645BDBIC 200kW 1500rpm
Generators:	2 x Stamford 215kVA 1 x shaft alternator M8BM315MB4 400kVA
Speed: abt. 11.5knots	
Consumption:	In port – abt. 0.75t Gas Oil per day At sea – abt. 7.50t HFO per day
Equipment:	GMDSS (A3), 2x radars, navtex, echosounder, speed/distance log 2x GPS receivers, A/P, gyro/magnetic compasses, 1x electric bowthruuster 250kW

E. & O. E.

Arklow Rebel



- Length with bulkheads stowed fwd 54.40m
- Length with bulkheads stowed aft 57.50m
- Length with 1 bulkhead stowed fwd and aft 50.50m