

# M.V. Arklow Racer

Port of Registry	Arklow	Yard	Barkmeijer Stroobos B.V., Holland
Call Sign	E.I.Q.M	Year of Build	2004
IMO No.	9291729	Class	Bureau Veritas
MMSI No.	250016000	Class Notation	+ 3/3E + CARGOSHIP DEEP SEA + MACH + AUT-MS Heavy CargoBRG Deep Sea / Ice Class 1B
Inmarsat-C (Telex)	+(581) 425001610 +(581) 425001611	Class No.	04203V
Email	425001610@stratosmobile.net	Official No.	403342
GSM telephone (Irish)	+353 (0) 87 6296405		



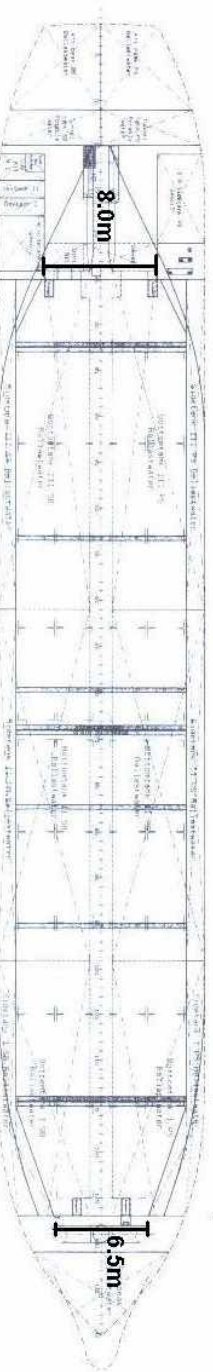
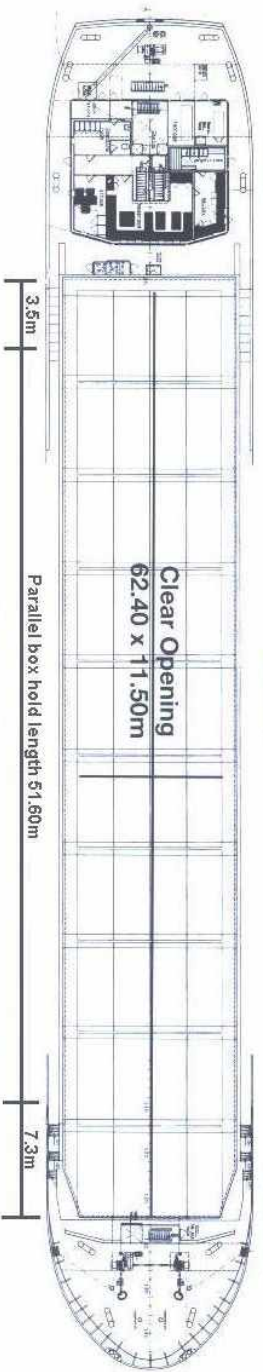
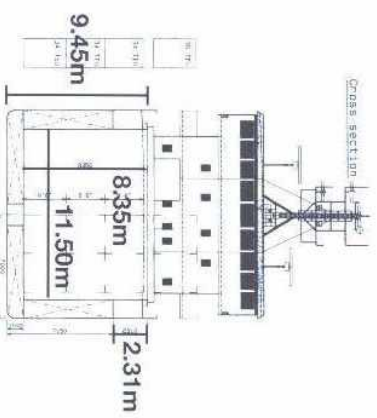
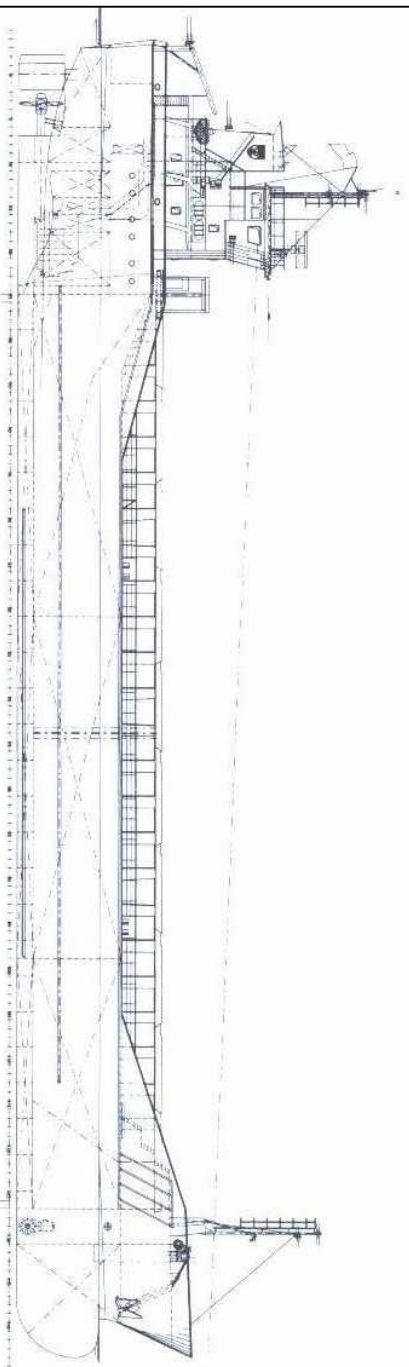
## Principal Particulars

Length OA	89.99m	<b>Hold Capacity:</b> Grain & Bale	<b>Main Engine:</b>
Length BP	84.98m	Incl. bulkheads 207391 ft <sup>3</sup> /5873 m <sup>3</sup>	MaK 6M25 1499kW with Scana Volda gearbox and controllable pitch propeller
Breadth Mid	14.00m	B/H stowed midships 206541 ft <sup>3</sup> /5849 m <sup>3</sup>	<b>Auxiliaries:</b>
Breadth Ext	14.18m	Portable bulkheads (2) may be placed in 9 positions for cargo separation	2 x Valmet 634 DSG 150kVA / 1500 rpm
Depth Mid	7.15m	<b>Containers:</b>	<b>Generators:</b>
Summer Load Draft	5.679m	Hold 102	2 x Stamford UCM274 H 175 kVA
Min. airdraft is	20.60m	Deck 36	1 x shaft alternator HCM534D2 435kVA
at max. ballast draft of	4.40m	<b>Hatches:</b> Roden Staal pontoon system	<b>Speed:</b> 11.5knots
min. coaming ht above waterline	6.40m	Maximum hatch top loading 1.5t/m <sup>2</sup>	<b>Consumption:</b>
GT	2999	Maximum tank top loading 15.0t/m <sup>2</sup>	In port – abt. 0.75t Gas Oil per day
NT	1639	Bottom strengthened for loading aground	At sea – 7.50t HFO per day
Displacement	5906t	Tank top strengthened for heavy cargoes	<b>Equipment:</b>
Total Deadweight	4485t	Engine room bulkhead A60 insulated	GMDSS (A3), 2x radars, navtex,
Ballast	1945m <sup>3</sup>	CO <sub>2</sub> fire extinguishing system in hold	echo sounder, speed/distance log,
Fuel – HFO	121.28m <sup>3</sup>	Certified for the carriage of dangerous goods of IMO Class 4.1, 4.2, 4.3, 5.1 and 5.2 (packaged)	2x GPS receivers,
Fuel – GO	35.84m <sup>3</sup>		gyro/magnetic compass.A/P
Fresh Water	88m <sup>3</sup>		1x bowthruster 250kW
Lub Oil	13m <sup>3</sup>		

29/10/2010

E. & O. E.

# Arklow Racer



Length with bulkheads stowed fwd 54.40m  
 Length with bulkheads stowed aft 57.50m  
 Length with 1 bulkhead stowed fwd and aft 50.50m