

# M.V. Arklow Ruler

Port of Registry	Arklow	Yard	Barkmeijer Stroobos, Holland
Call Sign	E I X Q	Year of Build	2006
IMO No.	9344502	Class	Bureau Veritas
MMSI No.	250000609	Class Notation	I + HULL + MACH + AUT-UMS
Inmarsat-C (Telex)	+ (581) 42500098 + (581) 42500099		MON-SHAFT STRENGTHBOTTOM
Email	425000098@stratosmobile.net	Class No.	07979A
GSM telephone (Irish)	+ 353 (87) 1335549	Official No.	403349



## Principal Particulars

Length OA	89.99m
Length BP	84.98m
Breadth Mid	14.00m
Breadth Ext	14.18m
Depth Mid	7.15m
Summer Load Draft	5.679m
Min. air draft is	20.60m
at max. ballast draft of	4.40m
min. coaming ht above waterline	6.40m
GT	2999
NT	1639
Displacement	5906t
Total Deadweight	4485t
Ballast	1839m <sup>3</sup>
Fuel – HFO	150.52m <sup>3</sup>
Fuel – GO	36.42m <sup>3</sup>
Fresh Water	88m <sup>3</sup>
Lub Oil	8m <sup>3</sup>

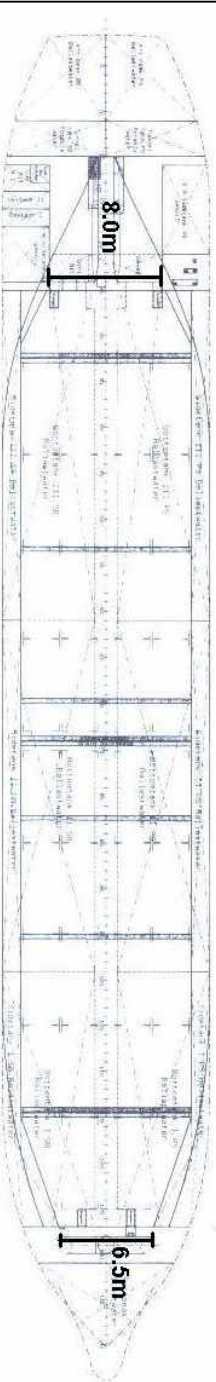
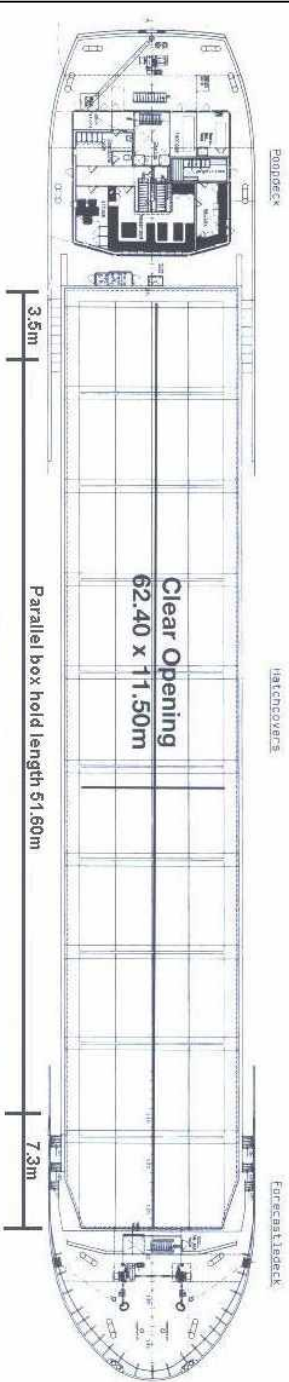
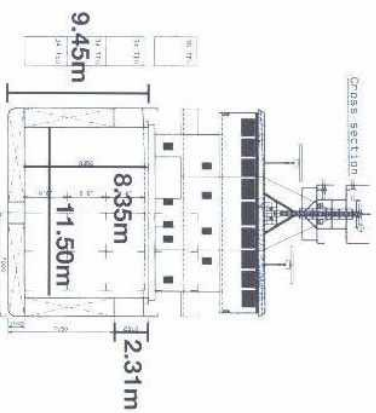
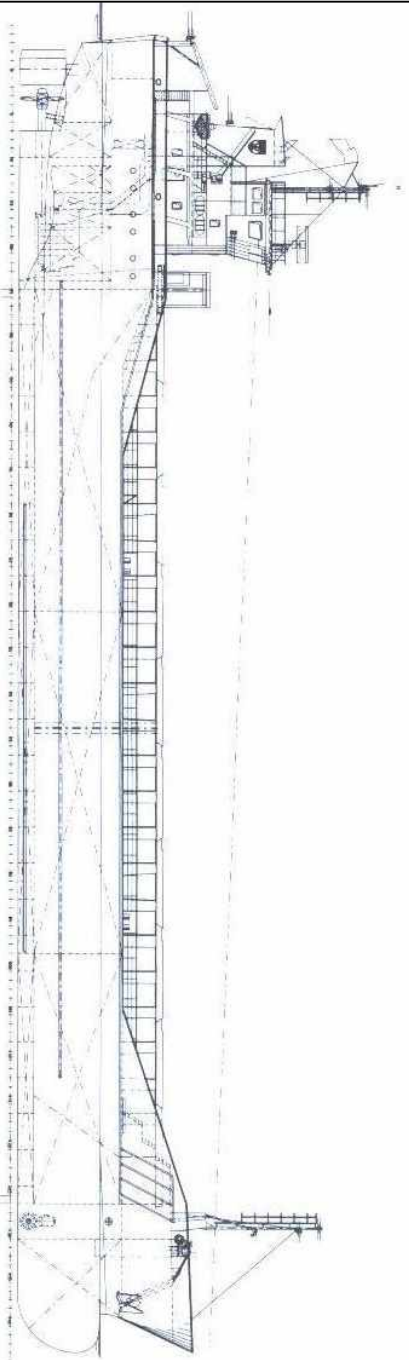
29/09/2010

<b>Hold Capacity:</b> Grain & Bale	
Incl. bulkheads	207391 ft <sup>3</sup> /5873 m <sup>3</sup>
B/H stowed midships	206541 ft <sup>3</sup> /5849 m <sup>3</sup>
Portable bulkheads (2) may be placed in	
9 positions for cargo separation	
<b>Containers:</b>	<b>TEU</b>
Hold	102
Deck	48
<b>Hatches:</b> Roden Staal pontoon system	
Maximum hatch top loading	1.5t/m <sup>2</sup>
Maximum tank top loading	15mt/m <sup>2</sup>
Bottom strengthened for loading aground	
Tank top strengthened for heavy cargoes	
Engine room bulkhead A60 insulated	
CO <sub>2</sub> fire extinguishing system in hold	
Engine room fitted with CO <sub>2</sub> and flexi-fog	
Certified for the carriage of dangerous goods of IMO Class 4.1, 4.2, 4.3, 5.1 and 5.2 (packaged)	

<b>Main Engine:</b>
MaK 6M25 1499kW with Scana Volda
Gearbox and controllable pitch propeller
<b>Auxiliaries:</b>
2 x Sisu Diesel 645BSBIG 180kW 1500rpm
<b>Generators:</b>
2 x Stamford 210Kva
1 x shaft alternator M8BM315MB4 400kVA
<b>Speed:</b> abt. 11.5knots
<b>Consumption:</b>
In port – abt. 0.75t Gas Oil per day
At sea – abt. 7.50t HFO per day
<b>Equipment:</b>
GMDSS (A3), 2x radars, navtex, echosounder, speed/distance log
2x GPS receivers, A/P, gyro/magnetic compasses,
1x electric bowthruster 250kW

E. & O. E.

# Arklow Ruler



Length with bulkheads stowed fwd 54.40m  
 Length with bulkheads stowed aft 57.50m  
 Length with 1 bulkhead stowed fwd and aft 50.50m