

M.V. Arklow Cadet



Port of Registry	Arklow	Yard	Scheepswerf Ferus Smit NV (Yard No: 424)
Call Sign	EIRP3	Year of Build	2016
IMO No.	9757084	Class	Bureau Veritas
MMSI No.	250004022	Class Notation	I + HULL + MACH, ICE CLASS FINNISH 1A, GENERAL CARGO SHIP, UNRESTRICTED NAVIGATION
Sat Phone	+31856661240	Class No:	29096D
Inmarsat-C (Telex)	+581(425000390)	Official No:	404746
Email	acadet@aslships.com		
GSM tel (Irish)	+353 (0) 872586878		

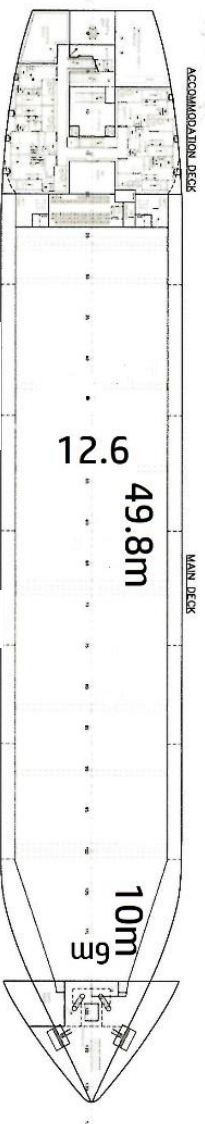
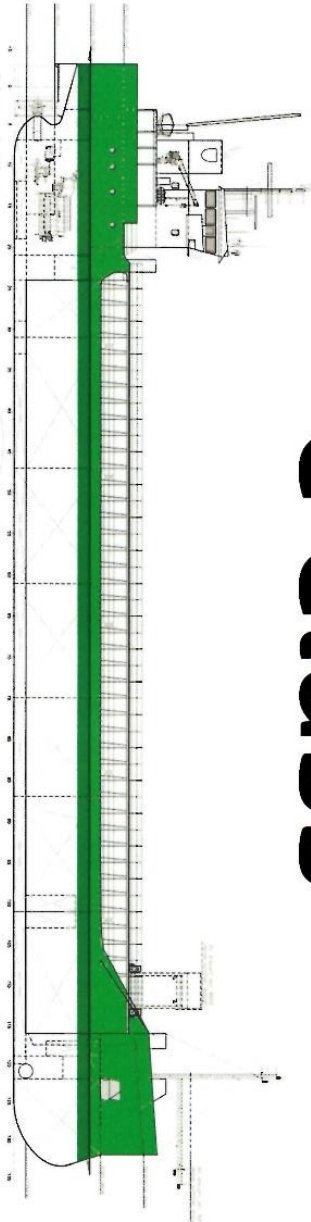


Principal Particulars

Length OA	87.40m	Hold Capacity: Grain & Bale	Main Engine:
Length BP	84.99m	(incl. B/H) 215614.22ft ³ /6105.80m ³	MAK 6M25 1740kW with gearbox and controllable pitch propeller
Breadth Mid	14.99m	Portable bulkheads (2) may be placed in 11 positions for cargo separation	Speed: abt. 11 knots
Breadth Ext	15.20m	Hatches: pontoon system	Consumption: abt. 7.5tons HFO/MGO per day
Depth Mid	7.12m	59.8m x 12.6m	Engine room: bulkhead A60 insulated
Summer Load Draft	6.26m	Max. hatch top loading 1.75t/m ²	Hold: CO ₂ fire extinguishing system
Min. airdraft is at max. ballast draft is	21.7m	Hold Dimensions	Certified for the carriage of dangerous goods
At max ballast draft is	3.88m	59.8m x 12.6m x 8.5m	Mechanical ventilation – 6 changes per hour in empty hold
min. coaming height above waterline	5.36m	Parallel Hold	Water Ballast Treatment System
GT	2999t	48.86m x 12.6M x 8.5M	Equipment
NT	1692t	Tank top strengthened for heavy cargoes.	GMDSS, Echo Sounder, Radars
Cargo Deadweight abt	5000t	Bottom strengthened for loading aground	Gyro & Magnetic Compass, AP, VDR
Total Deadweight	5054t	Max. tank top loading 15t/m ²	Navtex, GPS, AIS, LRIT, ECDIS
Fuel (HFO)	101m ³		Bowthruster
Fuel (GO)	96m ³		1 x 275kw
08/12/2017			E. & O.E.

ARKLOW CADET

C Class



CROSS SECT I

