



IMSBC Code

This is an electronically signed document in accordance with IMO FAL.5/Circ.39 and does not require a handwritten signature. Validation and authentication of the paper printout may be obtained from <https://e-certificate.rina.org>

ARKLOW RACER

General cargo ship - double side-
skin - heavycargo

Rina No. 100869

IMO No. 9923217

Certificate No. 100869-V009-009

UTN



**STATEMENT OF COMPLIANCE FOR THE CARRIAGE OF
SOLID CARGOES IN BULK**

No. 100869-V009-009

Name of ship	RINA Number	Flag
ARKLOW RACER	100869	Ireland
Port of Registry	IMO Number	Distinctive Number or Letters
ARKLOW	9923217	EIA2185

Type of ship: **Other than Bulk carrier**

THIS IS TO CERTIFY:

1. that the construction and equipment of the above-mentioned ship were found to comply with the provisions of the reg. II-2/54 SOLAS '74 or reg. II-2/19 SOLAS '74, as applicable, reg.VII/7-5 SOLAS'74 as amended by IMO Res. MSC.269(85), the International Maritime Solid Bulk Cargoes (IMSBC) Code, and
2. that the ship is suitable for the carriage of the solid bulk cargoes as specified on page 2 of this Statement subject to any provisions in the International Maritime Solid Bulk Cargoes (IMSBC) Code for individual cargoes also being complied with.

This Statement is valid until: **17 February 2028**

Issued at: **ROTTERDAM**

on: **14 November 2023**

IBRAHIM UGUR AYDIN

RINA SERVICES S.p.A.

SPACES IDENTIFIED ON HOLD PLAN BELOW

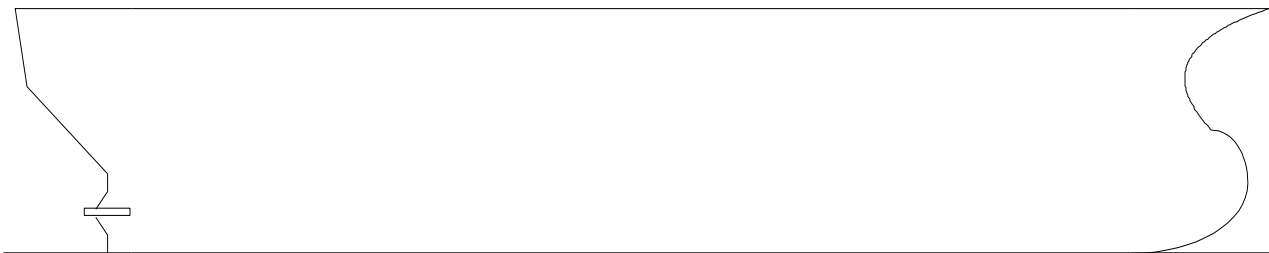
CARGOES		CARGO SPACES (*)		
		A	B	C
GROUP A	Cargoes, listed in Group A, which may liquefy, but having, when shipped, a moisture content not exceeding the "transportable moisture limit";	Y		
GROUP B	Cargoes possessing chemical hazards	Y		
GROUP C	Cargoes, listed in Group C, which are not liable to liquefy or to possess chemical hazards, having an angle of repose of not less than 30°.	Y		

(*) Y: Allowed X: Not allowed

General notes:

- The cargoes that may be carried are those for which the pertinent requirements in the "Record for the carriage of solid cargoes in bulk" n. 100869-V005-015-REC attached to the present Statement are complied with. For a cargo ship whose keel was laid after 1 September 1984 (1 February 1992, if tonnage < 500 GT) , for Group B cargoes belonging to classes 4.1 to 9 a Document of Compliance is also necessary
- All cargoes are to be loaded and carried according to the provisions contained in the ship's approved stability booklet/loading manual.

CARGO SPACES



UNDER DECK SPACES

Spaces	Description of cargo spaces (**)
A	All Cargo Holds
B	
C	

(**): see table below for possible additional notes/requirements for the carriage of specific cargoes

N.	Cargo	Group	Group of Excluded Hold(s)	Notes
1	ALFALFA	C		
2	ALUMINIUM FLUORIDE	A		
3	ALUMINIUM NITRATE UN 1438	B (class: 5.1)		Document of Compliance for the transport of dangerous goods, specific for this product class, is required!
4	AMMONIUM NITRATE BASED FERTILIZER (non-hazardous) with Angle of Repose > 30°	C		The Master is responsible to check the actual value of Angle of Repose
5	AMMONIUM NITRATE BASED FERTILIZER (non-hazardous) with Angle of Repose ≤ 30°	C		
6	AMMONIUM NITRATE BASED FERTILIZER UN 2067 with Angle of Repose > 30°	B (class: 5.1)		Document of Compliance for the transport of dangerous goods, specific for this product class, is required! The Master is responsible to check the actual value of Angle of Repose
7	AMMONIUM NITRATE BASED FERTILIZER UN 2067 with Angle of Repose ≤ 30°	B (class: 5.1)		Document of Compliance for the transport of dangerous goods, specific for this product class, is required!
8	AMMONIUM NITRATE BASED FERTILIZER UN 2071 with Angle of Repose > 30°	B (class: 9)		Document of Compliance for the transport of dangerous goods, specific for this product class, is required! The Master is responsible to check the actual value of Angle of Repose
9	AMMONIUM NITRATE BASED FERTILIZER UN 2071 with Angle of Repose ≤ 30°	B (class: 9)		Document of Compliance for the transport of dangerous goods, specific for this product class, is required!
10	AMMONIUM NITRATE BASED FERTILIZER MHB	B		Document of Compliance for the transport of dangerous goods, specific for this product class, is required!
11	AMMONIUM NITRATE UN 1942 with Angle of Repose > 30°	B (class: 5.1)		Document of Compliance for the transport of dangerous goods, specific for this product class, is required! The Master is responsible to check the actual value of Angle of Repose
12	AMMONIUM NITRATE UN 1942 with Angle of Repose ≤ 30°	B (class: 5.1)		Document of Compliance for the transport of dangerous goods, specific for this product class, is required!
13	AMMONIUM SULPHATE	C		Note: This cargo may possess an angle of repose greater than, equal to or lower than 30°. In case that the cargo to be loaded has an angle of repose equal to or lower than 30°, it is the responsibility of the Master to assure that it shall be carried according to the provisions applicable to the stowage of grain cargoes (see Section 5, paragraph 5.4.3, of the Code).
14	AMORPHOUS SODIUM SILICATE LUMPS	B (class: MHB)		
15	ANTIMONY ORE AND RESIDUE	C		
16	BARIUM NITRATE UN 1446	B (class: 5.1)		Document of Compliance for the transport of dangerous goods, specific for this product class, is required!
17	BARYTES	C		
18	BAUXITE	C		
19	BIOSLUDGE	C		
20	BORAX (PENTAHYDRATE CRUDE)	C		
21	BORAX, ANHYDROUS, crude or refined	C		
22	BORIC ACID	B (class: MHB)		

23	BROWN COAL BRIQUETTES	B (class: MHB)		
24	CALCIUM NITRATE FERTILIZER	C		
25	CALCIUM NITRATE UN 1454	B (class: 5.1)		Document of Compliance for the transport of dangerous goods, specific for this product class, is required!
26	CARBORUNDUM	C		
27	CASTOR BEANS or CASTOR MEAL or CASTOR POMACE or CASTOR FLAKE UN 2969	B (class: 9)		Document of Compliance for the transport of dangerous goods, specific for this product class, is required!
28	CEMENT	C		
29	CEMENT CLINKERS	C		
30	CEMENT COPPER (included in Mineral concentrates)	A		
31	CHAMOTTE	C		
32	CHARCOAL	B (class: MHB)		Charcoal Class 4.2 cannot be carried in bulk and hot charcoal screenings in excess of 55°C shall not be loaded.
33	CHEMICAL GYPSUM	A		
34	CHOPPED RUBBER AND PLASTIC INSULATION	C		Note: The Master is to consider that when the planned interval between the commencement of loading and the completion of discharge of this cargo exceeds 5 days, the cargo shall not be accepted for loading unless the cargo is to be carried in cargo spaces fitted with a fixed gas fire-extinguishing system.
35	CHROME PELLETS	C		
36	CHROMITE ORE	C		
37	CLAY	C		
38	CLINKER ASH, WET	B (class: MHB)		Note: it may also be in Group A
39	COAL	B (class: MHB)		note: it may also be in Group A
40	COAL SLURRY	A		
41	COAL TAR PITCH	B (class: MHB)		
42	COARSE CHOPPED TYRES	C		Note: The Master is to consider that when the planned interval between the commencement of loading and the completion of discharge of this cargo exceeds 5 days, the cargo shall not be accepted for loading unless the cargo is to be carried in cargo spaces fitted with a fixed gas fire-extinguishing system.
43	COARSE IRON AND STEEL SLAG AND ITS MIXTURE	C		
44	COKE	C		
45	COKE BREEZE	A		
46	COLEMANITE	C		
47	COPPER CONCENTRATE (included in Mineral concentrates)	A		
48	COPPER GRANULES	C		
49	COPPER MATTE	C		
50	COPPER SLUG	A		
51	COPRA (dry) UN 1363	B (class: 4.2)		Document of Compliance for the transport of dangerous goods, specific for this product class, is required!
52	CRUSHED CARBON ANODES	C		

53	CRYOLITE	C		
54	DIAMMONIUM PHOSPHATE	C		Note: This cargo may possess an angle of repose greater than, equal to or lower than 30°. In case that the cargo to be loaded has an angle of repose equal to or lower than 30°, it is the responsibility of the Master to assure that it shall be carried according to the provisions applicable to the stowage of grain cargoes (see Section 5, paragraph 5.4.3, of the Code).
55	DIRECT REDUCED IRON (A) Briquettes, hot-moulded	B (class: MHB)		
56	DISTILLERS DRIED GRAINS WITH SOLUBLES	C		
57	DOLOMITE	C		
58	FELSPAR LUMP	C		
59	FERROCHROME	C		
60	FERROCHROME, exothermic	C		
61	FERROMANGANESE	C		
62	FERRONICKEL	C		
63	FERROUS METAL BORINGS, SHAVINGS, TURNINGS or CUTTINGS UN 2793	B (class: 4.2)		Document of Compliance for the transport of dangerous goods, specific for this product class, is required!
64	FERROUS SULPHATE HEPTAHYDRATE	C		
65	FERTILIZERS WITHOUT NITRATES (non-hazardous)	C		
66	FISH (IN BULK)	A		
67	FLUORSPAR	B (class: MHB)		
68	FLY ASH, DRY	C		
69	FLY ASH, WET	A		
70	FOAM GLASS GRAVEL	C		
71	FOUNDRY SAND (included in SAND)	C		
72	GLASS CULLET	C		
73	GRAIN SCREENING PELLETS	C		
74	GRANULAR FERROUS SULPHATE	C		
75	GRANULATE TYRE RUBBER	C		Note: The Master is to consider that when the planned interval between the commencement of loading and the completion of discharge of this cargo exceeds 5 days, the cargo shall not be accepted for loading unless the cargo is to be carried in cargo spaces fitted with a fixed gas fire-extinguishing system.
76	GRANULATED NICKEL MATTE (LESS THAN 2% MOISTURE CONTENT)	B (class: MHB)		
77	GRANULATED SLAG	C		
78	GYPHUM	C		
79	GYPHUM GRANULATED	C		
80	ILMENITE (ROCK)	C		
81	ILMENITE (UPGRADED)	A		
82	ILMENITE CLAY	A		
83	ILMENITE SAND	C		Note: If the moisture content is above 2% this cargo may only be carried if the ship meets the requirement for the carriage of Group A cargoes.
84	IRON AND STEEL SLAG AND ITS MIXTURE	A		

85	IRON CONCENTRATE (included in Mineral concentrates)	A		
86	IRON CONCENTRATE (pellet feed) (included in Mineral concentrates)	A		
87	IRON CONCENTRATE (sinter feed) (included in Mineral concentrates)	A		
88	IRON ORE	C		
89	IRON ORE FINES	A		
90	IRON ORE PELLETS	C		
91	IRON OXIDE TECHNICAL	A		
92	IRON SINTER	C		
93	IRON SMELTING BY PRODUCT	A		
94	IRONSTONE	C		
95	LABRADORITE	C		
96	LEAD AND ZINC CALCINES (mixed) (included in Mineral concentrates)	A		
97	LEAD AND ZINC MIDDINGS (included in Mineral concentrates)	A		
98	LEAD CONCENTRATE (included in Mineral concentrates)	A		
99	LEAD NITRATE UN 1469	B (class: 5.1)		Document of Compliance for the transport of dangerous goods, specific for this product class, is required!
100	LEAD ORE	C		
101	LEAD ORE RESIDUE (included in Mineral concentrates)	A		
102	LEAD SILVER CONCENTRATE (included in Mineral concentrates)	A		
103	LIME (UNSLAKED)	B (class: MHB)		
104	LIMESTONE	C		
105	LINTED COTTON SEED	B (class: MHB)		
106	MAGNESIA (DEADBURNED)	C		
107	MAGNESIA (UNSLAKED)	B (class: MHB)		
108	MAGNESITE, natural	C		
109	MAGNESIUM NITRATE UN 1474	B (class: 5.1)		Document of Compliance for the transport of dangerous goods, specific for this product class, is required!
110	MAGNESIUM SULPHATE FERTILIZERS	C		Note: This cargo may possess an angle of repose greater than, equal to or lower than 30°. In case that the cargo to be loaded has an angle of repose equal to or lower than 30°, it is the responsibility of the Master to assure that it shall be carried according to the provisions applicable to the stowage of grain cargoes (see Section 5, paragraph 5.4.3, of the Code).
111	MANGANESE COMPONENT FERROALLOY SLAG	C		
112	MANGANESE CONCENTRATE (included in Mineral concentrates)	A		
113	MANGANESE ORE	C		
114	MANGANESE ORE FINES	A		
115	MARBLE CHIPS	C		
116	METAL SULPHIDE CONCENTRATES	B (class: MHB)		Note: It may be also in Group A

117	METAL SULPHIDE CONCENTRATES, Corrosive UN 1759	B (class: 8 or MHB)		Document of Compliance for the transport of dangerous goods, specific for this product class, is required! Note: It may be also in Group A
118	MONOAMMONIUM PHOSPHATE (M.A.P.)	C		
119	MONOAMMONIUM PHOSPHATE (M.A.P.), MINERAL ENRICHED COATING	B (class: MHB)		
120	MONOCALCIUMPHOSPHATE (MCP)	B (class: MHB)		It may also be in Group A
121	NEFELENE SYENITE (mineral) (included in Mineral concentrates)	A		
122	NICKEL CONCENTRATE (included in Mineral concentrates)	A		
123	NICKEL ORE	A		
124	OLIVINE GRANULAR AND GRAVEL AGGREGATE PRODUCTS	C		
125	OLIVINE SAND	A		
126	PEANUTS (in shell)	C		
127	PEAT MOSS	B (class: MHB)		Note: It may be also in Group A
128	PEBBLES (sea)	C		
129	PELLETS (concentrates)	C		
130	PENTAHYDRATE CRUDE (included in Mineral concentrates)	A		
131	PERLITE ROCK	C		
132	PETROLEUM COKE (calcined or uncalcined)	B (class: MHB)		
133	PHOSPHATE (defluorinated)	C		
134	PHOSPHATE ROCK	C		
135	PIG IRON	C		
136	PITCH PRILL	B (class: MHB)		
137	POTASH	C		
138	POTASSIUM CHLORIDE	C		Note: The Master is to consider that if the angle of repose of the goods loaded is equal to 30° it shall be carried according to the provisions applicable to the stowage of grain cargoes (see Section 5, paragraph 5.4.3, of the Code).
139	POTASSIUM FELSPAR SAND (included in SAND)	C		
140	POTASSIUM NITRATE UN 1486 with Angle of Repose > 30°	B (class: 5.1)		Document of Compliance for the transport of dangerous goods, specific for this product class, is required! The Master is responsible to check the actual value of Angle of Repose
141	POTASSIUM NITRATE UN 1486 with Angle of Repose ≤ 30°	B (class: 5.1)		Document of Compliance for the transport of dangerous goods, specific for this product class, is required!
142	POTASSIUM SULPHATE	C		
143	PUMICE	C		
144	PYRITE (containing copper and iron)	C		
145	PYRITES (included in Mineral concentrates)	A		
146	PYRITES, CALCINED (Calcined Pyrites)	B (class: MHB)		It may also be in Group A
147	PYRITIC ASHES (iron) (included in Mineral concentrates)	A		

148	PYRITIC CINDERS (included in Mineral concentrates)	A		
149	PYROPHYLLITE	C		
150	QUARTZ	C		
151	QUARTZ SAND (included in SAND)	C		
152	QUARZITE	C		
153	RADIOACTIVE MATERIAL SURFACE CONTAMINATED OBJECTS (SCO-1), non-fissile or fissile-excepted, UN 2913	B (class: 7)		Document of Compliance for the transport of dangerous goods, specific for this product class, is required!
154	RADIOACTIVE MATERIAL, LOW SPECIFIC ACTIVITY (LSA-1) non-fissile or fissile-excepted, UN 2912	B (class: 7)		Document of Compliance for the transport of dangerous goods, specific for this product class, is required!
155	RASORITE (ANHYDROUS)	C		
156	RUTILE SAND	C		
157	SALT	C		
158	SALT CAKE	C		
159	SALT ROCK	C		
160	SAND, HEAVY MINERAL	A		
161	SAND, MINERAL CONCENTRATE, RADIOACTIVE MATERIAL, LOW SPECIFIC ACTIVITY (LSA-I) UN 2912	B (class: 7 and MHB)		Document of Compliance for the transport of dangerous goods, specific for this product class, is required!
162	SAWDUST	B (class: MHB)		
163	SCALE GENERATED FROM THE IRON AND STEEL MAKING PROCESS	A		
164	SCRAP METAL	C		
165	SEED CAKE (not hazardous)	C		
166	SILICA SAND (included in SAND)	C		
167	SILICOMANGANESE (carbo-thermic)	C		
168	SILICON SLAG	C		
169	SILVER LEAD CONCENTRATE (included in Mineral concentrates)	A		
170	SLIG (iron ore) (included in Mineral concentrates)	A		
171	SODA ASH (Dense and light)	C		
172	SODA FELSPAR SAND (included in SAND)	C		
173	SODIUM NITRATE AND POTASSIUM NITRATE MIXTURE UN 1499 with Angle of Repose > 30°	B (class: 5.1)		Document of Compliance for the transport of dangerous goods, specific for this product class, is required! The Master is responsible to check the actual value of Angle of Repose
174	SODIUM NITRATE AND POTASSIUM NITRATE MIXTURE UN 1499 with Angle of Repose ≤ 30°	B (class: 5.1)		Document of Compliance for the transport of dangerous goods, specific for this product class, is required!
175	SODIUM NITRATE UN 1498	B (class: 5.1)		Document of Compliance for the transport of dangerous goods, specific for this product class, is required!
176	SOLIDIFIED FUELS RECYCLED FROM PAPER AND PLASTICS	B (class: MHB)		Materials classified as dangerous good class 4.2 are not included in this schedule
177	SPODUMENE (UPGRADED)	A		
178	STAINLESS STEEL GRINDING DUST	C		
179	STONE CHIPPINGS	C		
180	SUGAR	C		
181	SUGARCANE BIOMASS PELLETS	B (class: MHB)		

182	SULPHATE OF POTASH AND MAGNESIUM	C		
183	SULPHUR (formed, solid)	C		
184	SULPHUR UN 1350 (crushed lump and coarse grained)	B (class: 4.1)		Document of Compliance for the transport of dangerous goods, specific for this product class, is required!
185	SUPERPHOSPHATE	C		Note: This cargo may possess an angle of repose greater than, equal to or lower than 30°. In case that the cargo to be loaded has an angle of repose equal to or lower than 30°, it is the responsibility of the Master to assure that it shall be carried according to the provisions applicable to the stowage of grain cargoes (see Section 5, paragraph 5.4.3, of the Code).
186	SUPERPHOSPHATE (triple, granular)	C		
187	SYNTHETIC CALCIUM FLUORIDE	A		
188	SYNTHETIC SILICON DIOXIDE	A		
189	TACONITE PELLETS	C		
190	TALC	C		
191	TANKAGE	B (class: MHB)		
192	TAPIOCA	C		
193	TITANOMAGNETITE SAND	A		
194	UREA	C		Note: This cargo may possess an angle of repose greater than, equal to or lower than 30°. In case that the cargo to be loaded has an angle of repose equal to or lower than 30°, it is the responsibility of the Master to assure that it shall be carried according to the provisions applicable to the stowage of grain cargoes (see Section 5, paragraph 5.4.3, of the Code).
195	VANADIUM ORE	B (class: MHB)		
196	VERMICULITE	C		
197	WHITE QUARTZ	C		
198	WOOD PELLETS CONTAINING ADDITIVES AND/OR BINDERS with Angle of Repose > 30°	B (class: MHB (WF))		Document of Compliance for the transport of dangerous goods, specific for this product class, is required! The Master is responsible to check the actual value of Angle of Repose
199	WOOD PELLETS CONTAINING ADDITIVES AND/OR BINDERS with Angle of Repose ≤ 30°	B (class: MHB (WF))		Document of Compliance for the transport of dangerous goods, specific for this product class, is required!
200	WOOD PELLETS NOT CONTAINING ADDITIVES AND/OR BINDERS with Angle of Repose > 30°	B (class: MHB (OH))		Document of Compliance for the transport of dangerous goods, specific for this product class, is required! The Master is responsible to check the actual value of Angle of Repose
201	WOOD PELLETS NOT CONTAINING ADDITIVES AND/OR BINDERS with Angle of Repose ≤ 30°	B (class: MHB (OH))		Document of Compliance for the transport of dangerous goods, specific for this product class, is required!
202	WOOD PRODUCT - GENERAL	B (class: MHB)		* New product introduced by resolution MSC318(89)
203	WOOD TORREFIED with Angle of Repose > 30°	B (class: MHB)		The Master is responsible to check the actual value of Angle of Repose
204	WOOD TORREFIED with Angle of Repose ≤ 30°	B (class: MHB)		
205	WOODCHIPS	B (class: MHB)		

206	ZINC AND LEAD CALCINES (mixed) (included in Mineral concentrates)	A		
207	ZINC AND LEAD MIDDINGS (included in Mineral concentrates)	A		
208	ZINC ASHES UN 1435	B (class: 4.3)		Document of Compliance for the transport of dangerous goods, specific for this product class, is required!
209	ZINC CONCENTRATE (included in Mineral concentrates)	A		
210	ZINC SINTER (included in Mineral concentrates)	A		
211	ZINC SLAG	A		
212	ZINC SLUDGE (included in Mineral concentrates)	A		
213	ZIRCON KYANITE CONCENTRATE	A		
214	ZIRCONSAND	C		

ENDORSEMENT FOR ANNUAL SURVEYS

THIS IS TO CERTIFY that the ship was found to comply with the relevant provisions of the International Maritime Solid Bulk Cargoes (IMSBC) Code.

Annual Survey Place Sevilla Date 19/04/2024	Signature and seal Toubes Tova Jesús RINA Services S.p.a. electronically signed
Annual Survey Place Date	Signature and seal
Annual Survey Place Date	Signature and seal
Annual Survey Place Date	Signature and seal