



## *IMSBC Code*

This is an electronically signed document in accordance with IMO FAL.5/Circ.39 and does not require a handwritten signature. Validation and authentication of the paper printout may be obtained from <https://e-certificate.rina.org>

# ARKLOW RANGER

General cargo ship - double side-  
skin - heavycargo

---

Rina No. 100873

---

IMO No. 9923243

---

Certificate No. 100873-V005-001

---

UTN

---

# STATEMENT OF COMPLIANCE FOR THE CARRIAGE OF SOLID CARGOES IN BULK

No. 100873-V003-015



RINA No. 100873

Name of ship	RINA Number	Flag
<b>ARKLOW RANGER</b>	<b>100873</b>	<b>Ireland</b>
Port of Registry	IMO Number	Distinctive Number or Letters
<b>ARKLOW</b>	<b>9923243</b>	<b>EIA2572</b>

Type of ship     **Other than Bulk carrier**

## THIS IS TO CERTIFY:

1. that the construction and equipment of the above-mentioned ship were found to comply with the provisions of the reg. II-2/54 SOLAS '74 or reg. II-2/19 SOLAS '74, as applicable, reg. VII/7-5 SOLAS '74 as amended by IMO Res. MSC.269(85), the International Maritime Solid Bulk Cargoes (IMSBC) Code, and
2. that the ship is suitable for the carriage of the solid bulk cargoes as specified on page 2 of this Statement subject to any provisions in the International Maritime Solid Bulk Cargoes (IMSBC) Code for individual cargoes also being complied with.

This Statement is valid until:     **11 June 2029**

Issued at:     **Southampton, UK**

on: **31 October 2024**

**Electronically Signed - Burakhan KULCU**

**RINA SERVICES S.p.A.**

## SPACES IDENTIFIED ON HOLD PLAN BELOW

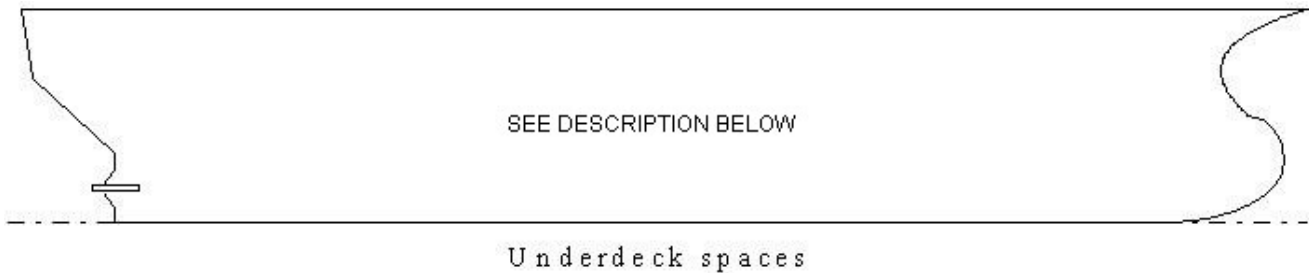
CARGOES		CARGO SPACES (*)		
		A	B	C
GROUP A	Cargoes, listed in Group A, which may liquefy, but having, when shipped, a moisture content not exceeding the "transportable moisture limit";	Y	-	-
GROUP B	Cargoes possessing chemical hazards	Y	-	-
GROUP C	Cargoes, listed in Group C, which are not liable to liquefy or to possess chemical hazards, having an angle of repose of not less than 30°;	Y	-	-

(\*) Y : Allowed X : Not allowed

General note:

- The cargoes that may be carried are those for which the pertinent requirements in the "Record for the carriage of solid cargoes in bulk" n. 100873-R001-021 attached to the present Statement are complied with.
- For a cargo ship whose keel was laid after 1 September 1984 (1 February 1992, if tonnage < 500 GT) , for Group B cargoes belonging to classes 4.1 to 9 a Document of Compliance is also necessary
- All cargoes are to be loaded and carried according to the provisions contained in the ship's approved stability booklet/loading manual

## CARGO SPACES (\*)



Spaces	Description of cargo spaces (**)
A	All Cargo Holds
B	
C	

(\*\*): see table below for possible additional notes/requirements for the carriage of specific cargoes

N.	Cargo	Group	Group of Excluded Hold(s)	Notes
1.	ALFALFA	C		
2.	ALUMINIUM FLUORIDE	A		
3.	ALUMINIUM NITRATE UN 1438	B (class: 5.1)		<b>Document of Compliance for the transport of dangerous goods, specific for this product class, is required!</b>
4.	AMMONIUM NITRATE BASED FERTILIZER (non-hazardous) with Angle of Repose $\leq 30^\circ$	C		
5.	AMMONIUM NITRATE BASED FERTILIZER (non-hazardous) with Angle of Repose $> 30^\circ$	C		The Master is responsible to check the actual value of Angle of Repose
6.	AMMONIUM NITRATE BASED FERTILIZER UN 2067 with Angle of Repose $> 30^\circ$	B (class: 5.1)		<b>Document of Compliance for the transport of dangerous goods, specific for this product class, is required!</b> The Master is responsible to check the actual value of Angle of Repose
7.	AMMONIUM NITRATE BASED FERTILIZER UN 2067 with Angle of Repose $\leq 30^\circ$	B (class: 5.1)		<b>Document of Compliance for the transport of dangerous goods, specific for this product class, is required!</b>
8.	AMMONIUM NITRATE BASED FERTILIZER UN 2071 with Angle of Repose $> 30^\circ$	B (class: 9)		<b>Document of Compliance for the transport of dangerous goods, specific for this product class, is required!</b> The Master is responsible to check the actual value of Angle of Repose
9.	AMMONIUM NITRATE BASED FERTILIZER UN 2071 with Angle of Repose $\leq 30^\circ$	B (class: 9)		<b>Document of Compliance for the transport of dangerous goods, specific for this product class, is required!</b>
10.	AMMONIUM NITRATE UN 1942 with Angle of Repose $> 30^\circ$	B (class: 5.1)		<b>Document of Compliance for the transport of dangerous goods, specific for this product class, is required!</b> The Master is responsible to check the actual value of Angle of Repose
11.	AMMONIUM NITRATE UN 1942 with Angle of Repose $\leq 30^\circ$	B (class: 5.1)		<b>Document of Compliance for the transport of dangerous goods, specific for this product class, is required!</b>
12.	AMMONIUM SULPHATE	C		Note: This cargo may possess an angle of repose greater than, equal to or lower than $30^\circ$ . In case that the cargo to be loaded has an angle of repose equal to or lower than $30^\circ$ , it is the responsibility of the Master to assure that it shall be carried according to the provisions applicable to the stowage of grain cargoes (see Section 5, paragraph 5.4.3, of the Code).
13.	AMORPHOUS SODIUM SILICATE LUMPS	B (class: MHB)		
14.	ANTIMONY ORE AND RESIDUE	C		
15.	BARIUM NITRATE UN 1446	B (class: 5.1)		<b>Document of Compliance for the transport of dangerous goods, specific for this product class, is required!</b>
16.	BARYTES	C		
17.	BAUXITE	C		
18.	BIOSLUDGE	C		
19.	BORAX (PENTAHYDRATE CRUDE)	C		
20.	BORAX, ANHYDROUS, crude or refined	C		
21.	BORIC ACID	B (class: MHB)		

22.	BROWN COAL BRIQUETTES	B (class: MHB)		
23.	CALCIUM NITRATE FERTILIZER	C		
24.	CALCIUM NITRATE UN 1454	B (class: 5.1)		<b>Document of Compliance for the transport of dangerous goods, specific for this product class, is required!</b>
25.	CARBORUNDUM	C		
26.	CASTOR BEANS or CASTOR MEAL or CASTOR POMACE or CASTOR FLAKE UN 2969	B (class: 9)		<b>Document of Compliance for the transport of dangerous goods, specific for this product class, is required!</b>
27.	CEMENT	C		
28.	CEMENT CLINKERS	C		
29.	CEMENT COPPER (included in Mineral concentrates)	A		
30.	CHAMOTTE	C		
31.	CHARCOAL	B (class: MHB)		Charcoal Class 4.2 cannot be carried in bulk and hot charcoal screenings in excess of 55°C shall not be loaded.
32.	CHEMICAL GYPSUM	A		
33.	CHOPPED RUBBER AND PLASTIC INSULATION	C		Note: The Master is to consider that when the planned interval between the commencement of loading and the completion of discharge of this cargo exceeds 5 days, the cargo shall not be accepted for loading unless the cargo is to be carried in cargo spaces fitted with a fixed gas fire-extinguishing system.
34.	CHROME PELLETS	C		
35.	CHROMITE ORE	C		
36.	CLAY	C		
37.	CLINKER ASH, WET	B (class: MHB)		Note: it may also be in Group A
38.	COAL	B (class: MHB)		note: it may also be in Group A
39.	COAL SLURRY	A		
40.	COAL TAR PITCH	B (class: MHB)		
41.	COARSE CHOPPED TYRES	C		Note: The Master is to consider that when the planned interval between the commencement of loading and the completion of discharge of this cargo exceeds 5 days, the cargo shall not be accepted for loading unless the cargo is to be carried in cargo spaces fitted with a fixed gas fire-extinguishing system.
42.	COARSE IRON AND STEEL SLAG AND ITS MIXTURE	C		
43.	COKE	C		
44.	COKE BREEZE	A		
45.	COLEMANITE	C		
46.	COPPER CONCENTRATE (included in Mineral concentrates)	A		
47.	COPPER GRANULES	C		
48.	COPPER MATTE	C		
49.	COPPER SLUG	A		
50.	COPRA (dry) UN 1363	B (class: 4.2)		<b>Document of Compliance for the transport of dangerous goods, specific for this product class, is required!</b>
51.	CRUSHED CARBON ANODES	C		
52.	CRYOLITE	C		
53.	DIAMMONIUM PHOSPHATE	C		Note: This cargo may possess an angle of repose greater than, equal to or lower than 30°. In case that the cargo to be loaded has an angle of repose equal to or lower than 30°, it is

				the responsibility of the Master to assure that it shall be carried according to the provisions applicable to the stowage of grain cargoes (see Section 5, paragraph 5.4.3, of the Code).
54.	DIRECT REDUCED IRON (A) Briquettes, hot-moulded	B (class: MHB)		
55.	DISTILLERS DRIED GRAINS WITH SOLUBLES	C		
56.	DOLOMITE	C		
57.	FELSPAR LUMP	C		
58.	FERROCHROME	C		
59.	FERROCHROME, exothermic	C		
60.	FERROMANGANESE	C		
61.	FERRONICKEL	C		
62.	FERROUS METAL BORINGS, SHAVINGS, TURNINGS or CUTTINGS UN 2793	B (class: 4.2)		<b>Document of Compliance for the transport of dangerous goods, specific for this product class, is required!</b>
63.	FERROUS SULPHATE HEPTAHYDRATE	C		
64.	FERTILIZERS WITHOUT NITRATES (non-hazardous)	C		
65.	FISH (IN BULK)	A		
66.	FLUORSPAR	B (class: MHB)		
67.	FLY ASH, DRY	C		
68.	FLY ASH, WET	A		
69.	FOAM GLASS GRAVEL	C		
70.	FOUNDRY SAND (included in SAND)	C		
71.	GLASS CULLET	C		
72.	GRAIN SCREENING PELLETS	C		
73.	GRANULAR FERROUS SULPHATE	C		
74.	GRANULATE TYRE RUBBER	C		Note: The Master is to consider that when the planned interval between the commencement of loading and the completion of discharge of this cargo exceeds 5 days, the cargo shall not be accepted for loading unless the cargo is to be carried in cargo spaces fitted with a fixed gas fire-extinguishing system.
75.	GRANULATED NICKEL MATTE (LESS THAN 2% MOISTURE CONTENT)	B (class: MHB)		
76.	GRANULATED SLAG	C		
77.	GYPNUM	C		
78.	GYPNUM GRANULATED	C		
79.	ILMENITE (ROCK)	C		
80.	ILMENITE (UPGRADED)	A		
81.	ILMENITE CLAY	A		
82.	ILMENITE SAND	C		Note: If the moisture content is above 2% this cargo may only be carried if the ship meets the requirement for the carriage of Group A cargoes.
83.	IRON AND STEEL SLAG AND ITS MIXTURE	A		
84.	IRON CONCENTRATE (included in Mineral concentrates)	A		
85.	IRON CONCENTRATE (pellet feed) (included in Mineral concentrates)	A		
86.	IRON CONCENTRATE (sinter feed) (included in Mineral concentrates)	A		
87.	IRON ORE	C		
88.	IRON ORE FINES	A		
89.	IRON ORE PELLETS	C		

90.	IRON OXIDE TECHNICAL	A		
91.	IRON SINTER	C		
92.	IRON SMELTING BY PRODUCT	A		
93.	IRONSTONE	C		
94.	LABRADORITE	C		
95.	LEAD AND ZINC CALCINES (mixed) (included in Mineral concentrates)	A		
96.	LEAD AND ZINC MIDDINGS (included in Mineral concentrates)	A		
97.	LEAD CONCENTRATE (included in Mineral concentrates)	A		
98.	LEAD NITRATE UN 1469	B (class: 5.1)		<b>Document of Compliance for the transport of dangerous goods, specific for this product class, is required!</b>
99.	LEAD ORE	C		
100.	LEAD ORE RESIDUE (included in Mineral concentrates)	A		
101.	LEAD SILVER CONCENTRATE (included in Mineral concentrates)	A		
102.	LIME (UNSLAKED)	B (class: MHB)		
103.	LIMESTONE	C		
104.	LINTED COTTON SEED	B (class: MHB)		
105.	MAGNESIA (DEADBURNED)	C		
106.	MAGNESIA (UNSLAKED)	B (class: MHB)		
107.	MAGNESITE, natural	C		
108.	MAGNESIUM NITRATE UN 1474	B (class: 5.1)		<b>Document of Compliance for the transport of dangerous goods, specific for this product class, is required!</b>
109.	MAGNESIUM SULPHATE FERTILIZERS	C		Note: This cargo may possess an angle of repose greater than, equal to or lower than 30°. In case that the cargo to be loaded has an angle of repose equal to or lower than 30°, it is the responsibility of the Master to assure that it shall be carried according to the provisions applicable to the stowage of grain cargoes (see Section 5, paragraph 5.4.3, of the Code).
110.	MANGANESE COMPONENT FERROALLOY SLAG	C		
111.	MANGANESE CONCENTRATE (included in Mineral concentrates)	A		
112.	MANGANESE ORE	C		
113.	MANGANESE ORE FINES	A		
114.	MARBLE CHIPS	C		
115.	METAL SULPHIDE CONCENTRATES	B (class: MHB)		Note: It may be also in Group A
116.	METAL SULPHIDE CONCENTRATES, Corrosive UN 1759	B (class: 8 or MHB)		<b>Document of Compliance for the transport of dangerous goods, specific for this product class, is required!</b> Note: It may be also in Group A
117.	MONOAMMONIUM PHOSPHATE (M.A.P.)	C		
118.	MONOAMMONIUM PHOSPHATE (M.A.P.), MINERAL ENRICHED COATING	B (class: MHB)		
119.	MONOCALCIUMPHOSPHATE (MCP)	B (class: MHB)		It may also be in Group A
120.	NEFELENE SYENITE (mineral)	A		

	(included in Mineral concentrates)			
121.	NICKEL CONCENTRATE (included in Mineral concentrates)	A		
122.	NICKEL ORE	A		
123.	OLIVINE GRANULAR AND GRAVEL AGGREGATE PRODUCTS	C		
124.	OLIVINE SAND	A		
125.	PEANUTS (in shell)	C		
126.	PEAT MOSS	B (class: MHB)		Note: It may be also in Group A
127.	PEBBLES (sea)	C		
128.	PELLETS (concentrates)	C		
129.	PENTAHYDRATE CRUDE (included in Mineral concentrates)	A		
130.	PERLITE ROCK	C		
131.	PETROLEUM COKE (calcined or uncalcined)	B (class: MHB)		
132.	PHOSPHATE (defluorinated)	C		
133.	PHOSPHATE ROCK	C		
134.	PIG IRON	C		
135.	PITCH PRILL	B (class: MHB)		
136.	POTASH	C		
137.	POTASSIUM CHLORIDE	C		Note: The Master is to consider that if the angle of repose of the goods loaded is equal to 30° it shall be carried according to the provisions applicable to the stowage of grain cargoes (see Section 5, paragraph 5.4.3, of the Code).
138.	POTASSIUM FELSPAR SAND (included in SAND)	C		
139.	POTASSIUM NITRATE UN 1486 with Angle of Repose > 30°	B (class: 5.1)		<b>Document of Compliance for the transport of dangerous goods, specific for this product class, is required!</b> The Master is responsible to check the actual value of Angle of Repose
140.	POTASSIUM NITRATE UN 1486 with Angle of Repose ≤ 30°	B (class: 5.1)		<b>Document of Compliance for the transport of dangerous goods, specific for this product class, is required!</b>
141.	POTASSIUM SULPHATE	C		
142.	PUMICE	C		
143.	PYRITE (containing copper and iron)	C		
144.	PYRITES (included in Mineral concentrates)	A		
145.	PYRITES, CALCINED (Calcined Pyrites)	B (class: MHB)		It may also be in Group A
146.	PYRITIC ASHES (iron) (included in Mineral concentrates)	A		
147.	PYRITIC CINDERS (included in Mineral concentrates)	A		
148.	PYROPHYLLITE	C		
149.	QUARTZ	C		
150.	QUARTZ SAND (included in SAND)	C		
151.	QUARZITE	C		
152.	RADIOACTIVE MATERIAL SURFACE CONTAMINATED OBJECTS (SCO-1), non-fissile or fissile-excepted, UN 2913	B (class: 7)		<b>Document of Compliance for the transport of dangerous goods, specific for this product class, is required!</b>
153.	RADIOACTIVE MATERIAL, LOW	B		<b>Document of Compliance for the transport of</b>



	SPECIFIC ACTIVITY (LSA-1) non-fissile or fissile-excepted, UN 2912	(class: 7)		<b>dangerous goods, specific for this product class, is required!</b>
154.	RASORITE (ANHYDROUS)	C		
155.	RUTILE SAND	C		
156.	SALT	C		
157.	SALT CAKE	C		
158.	SALT ROCK	C		
159.	SAND, HEAVY MINERAL	A		
160.	SAND, MINERAL CONCENTRATE, RADIOACTIVE MATERIAL, LOW SPECIFIC ACTIVITY (LSA-I) UN 2912	B (class: 7 and MHB)		<b>Document of Compliance for the transport of dangerous goods, specific for this product class, is required!</b> Note: it may also be in Group A
161.	SAWDUST	B (class: MHB)		
162.	SCALE GENERATED FROM THE IRON AND STEEL MAKING PROCESS	A		
163.	SCRAP METAL	C		
164.	SEED CAKE (not hazardous)	C		
165.	SILICA SAND (included in SAND)	C		
166.	SILICOMANGANESE (carbo-thermic)	C		
167.	SILICON SLAG	C		
168.	SILVER LEAD CONCENTRATE (included in Mineral concentrates)	A		
169.	SLIG (iron ore) (included in Mineral concentrates)	A		
170.	SODA ASH (Dense and light)	C		
171.	SODA FELSPAR SAND (included in SAND)	C		
172.	SODIUM NITRATE AND POTASSIUM NITRATE MIXTURE UN 1499 with Angle of Repose $\leq 30^\circ$	B (class: 5.1)		<b>Document of Compliance for the transport of dangerous goods, specific for this product class, is required!</b>
173.	SODIUM NITRATE AND POTASSIUM NITRATE MIXTURE UN 1499 with Angle of Repose $> 30^\circ$	B (class: 5.1)		<b>Document of Compliance for the transport of dangerous goods, specific for this product class, is required!</b> The Master is responsible to check the actual value of Angle of Repose
174.	SODIUM NITRATE UN 1498	B (class: 5.1)		<b>Document of Compliance for the transport of dangerous goods, specific for this product class, is required!</b>
175.	SOLIDIFIED FUELS RECYCLED FROM PAPER AND PLASTICS	B (class: MHB)		Materials classified as dangerous good class 4.2 are not included in this schedule
176.	SPODUMENE (UPGRADED)	A		
177.	STAINLESS STEEL GRINDING DUST	C		
178.	STONE CHIPPINGS	C		
179.	SUGAR	C		
180.	SUGARCANE BIOMASS PELLETS	B (class: MHB)		
181.	SULPHATE OF POTASH AND MAGNESIUM	C		
182.	SULPHUR (formed, solid)	C		
183.	SULPHUR UN 1350 (crushed lump and coarse grained)	B (class: 4.1)		<b>Document of Compliance for the transport of dangerous goods, specific for this product class, is required!</b>
184.	SUPERPHOSPHATE	C		Note: This cargo may possess an angle of repose greater than, equal to or lower than $30^\circ$ . In case that the cargo to be loaded has an angle of repose equal to or lower than $30^\circ$ , it is the responsibility of the Master to assure that it shall be carried according to the provisions applicable to the stowage

				of grain cargoes (see Section 5, paragraph 5.4.3, of the Code).
185.	SUPERPHOSPHATE (triple, granular)	C		
186.	SYNTHETIC CALCIUM FLUORIDE	A		
187.	SYNTHETIC SILICON DIOXIDE	A		
188.	TACONITE PELLETS	C		
189.	TALC	C		
190.	TANKAGE	B (class: MHB)		
191.	TAPIOCA	C		
192.	TITANOMAGNETITE SAND	A		
193.	UREA	C		Note: This cargo may possess an angle of repose greater than, equal to or lower than 30°. In case that the cargo to be loaded has an angle of repose equal to or lower than 30°, it is the responsibility of the Master to assure that it shall be carried according to the provisions applicable to the stowage of grain cargoes (see Section 5, paragraph 5.4.3, of the Code).
194.	VANADIUM ORE	B (class: MHB)		
195.	VERMICULITE	C		
196.	WHITE QUARTZ	C		
197.	WOOD PELLETS CONTAINING ADDITIVES AND/OR BINDERS with Angle of Repose ≤ 30°	B (class: MHB (WF))		<b>Document of Compliance for the transport of dangerous goods, specific for this product class, is required!</b>
198.	WOOD PELLETS CONTAINING ADDITIVES AND/OR BINDERS with Angle of Repose > 30°	B (class: MHB (WF))		<b>Document of Compliance for the transport of dangerous goods, specific for this product class, is required!</b> The Master is responsible to check the actual value of Angle of Repose
199.	WOOD PELLETS NOT CONTAINING ADDITIVES AND/OR BINDERS with Angle of Repose ≤ 30°	B (class: MHB (OH))		<b>Document of Compliance for the transport of dangerous goods, specific for this product class, is required!</b>
200.	WOOD PELLETS NOT CONTAINING ADDITIVES AND/OR BINDERS with Angle of Repose > 30°	B (class: MHB (OH))		<b>Document of Compliance for the transport of dangerous goods, specific for this product class, is required!</b> The Master is responsible to check the actual value of Angle of Repose
201.	WOOD PRODUCT - GENERAL	B (class: MHB)		* New product introduced by resolution MSC318(89)
202.	WOOD TORREFIED with Angle of Repose > 30°	B (class: MHB)		The Master is responsible to check the actual value of Angle of Repose
203.	WOOD TORREFIED with Angle of Repose ≤ 30°	B (class: MHB)		
204.	WOODCHIPS	B (class: MHB)		
205.	ZINC AND LEAD CALCINES (mixed) (included in Mineral concentrates)	A		
206.	ZINC AND LEAD MIDDINGS (included in Mineral concentrates)	A		
207.	ZINC ASHES UN 1435	B (class: 4.3)		<b>Document of Compliance for the transport of dangerous goods, specific for this product class, is required!</b>
208.	ZINC CONCENTRATE (included in Mineral concentrates)	A		
209.	ZINC SINTER (included in Mineral concentrates)	A		

210.	ZINC SLAG	A		
211.	ZINC SLUDGE (included in Mineral concentrates)	A		
212.	ZIRCON KYANITE CONCENTRATE	A		
213.	ZIRCONSAND	C		
214.	ZINC EXRICHED FLUE DUST	A		

ENDORSEMENT FOR ANNUAL SURVEYS

THIS IS TO CERTIFY: that the ship was found to comply with the relevant provisions of the International Maritime Solid Bulk Cargoes(IMSBC) Code.

Annual survey	Signature and seal
Place	
Date	
Annual survey	Signature and seal
Place	
Date	
Annual survey	Signature and seal
Place	
Date	
Annual survey	Signature and seal
Place	
Date	