

BOATDECK 14610

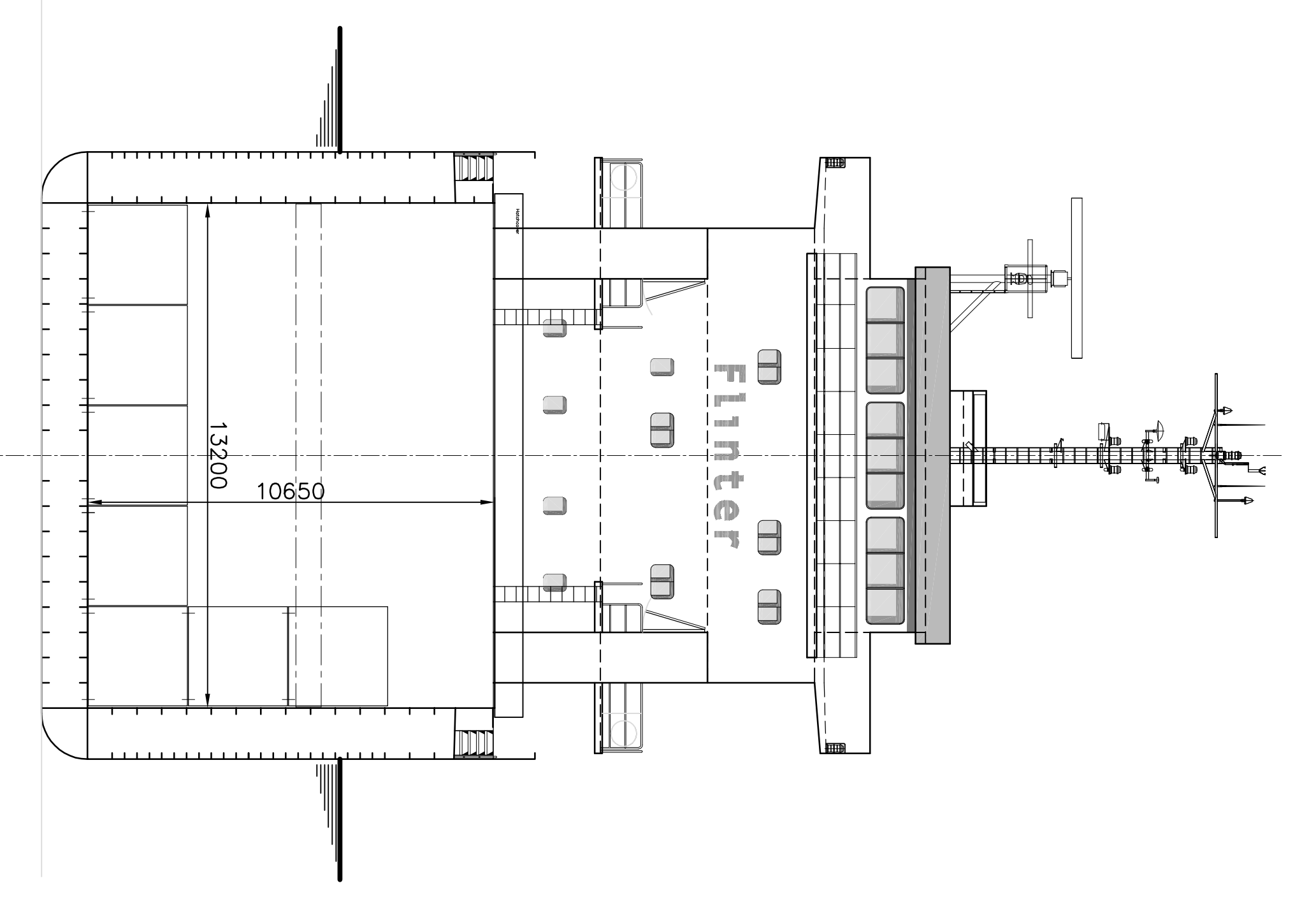
CAPTAINS DECK 17410

BRIDGE DECK 20210

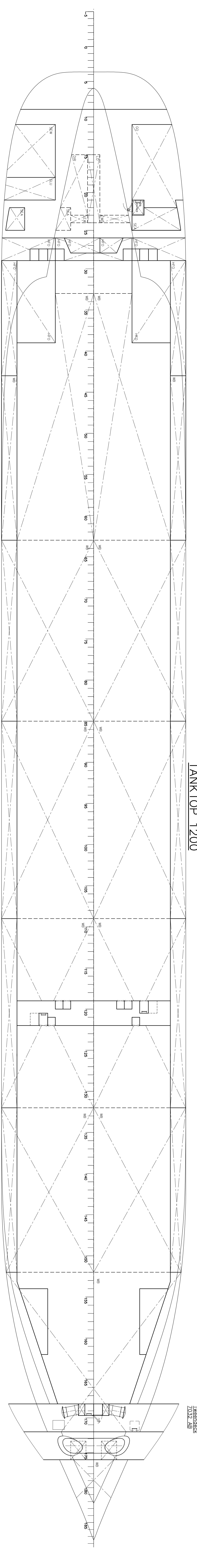
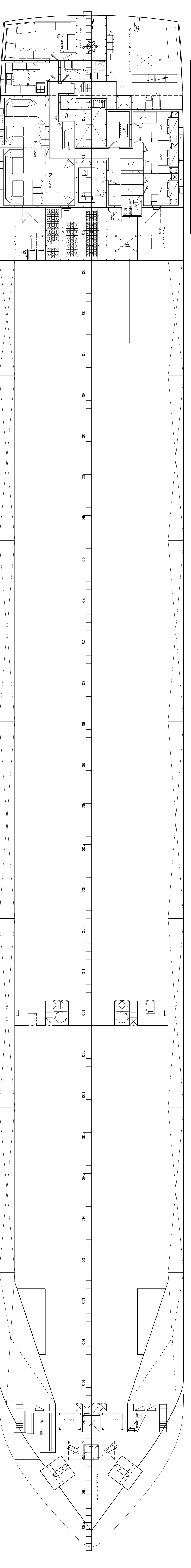
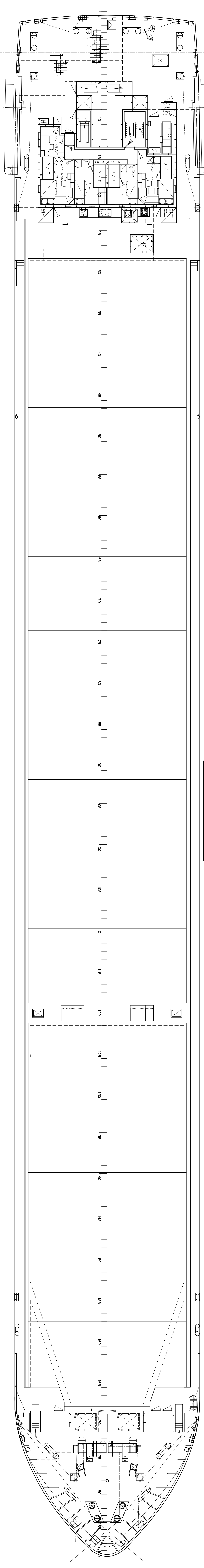
RAISED QUARTERDECK 11810

MANDECK 10780

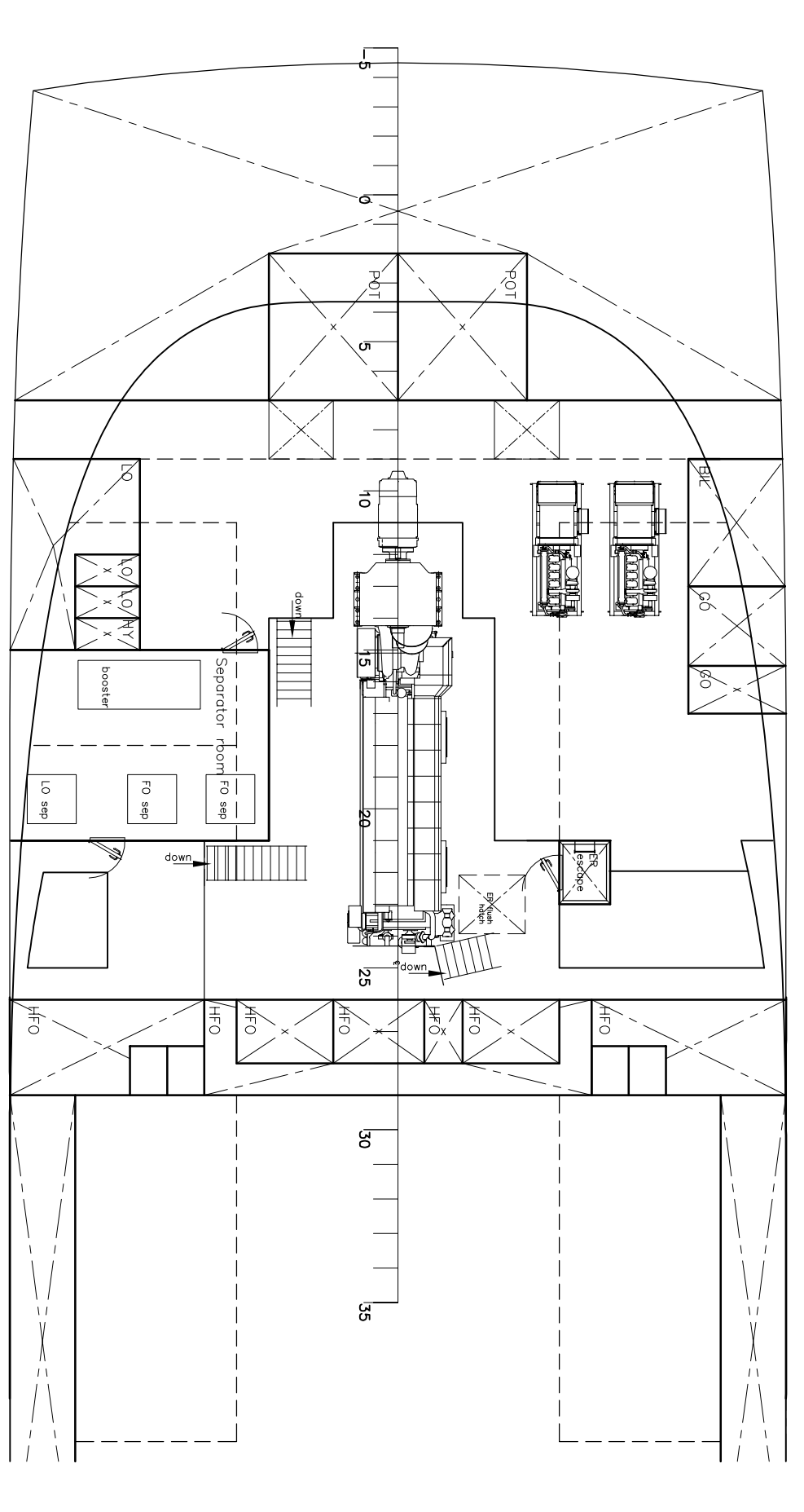
FORECASTLEDECK 13620



TWEENDECK 5700



TANKTOP 1200



General particulars:

L o.a.	132.60	mtr
L p.p.	126.90	mtr
B mld.	15.87	mtr
H mld.	10.78	mtr
T max	7.83	mtr
Deadweight dwt.	10500	ton
Hold volume	460,000	cft
MCR	4000	KW
Speed	14	Kts

NO.	ALTERATION	DATE	APPROVED	DATE	INIT.
E	General update	25-09-2009			
D	maroff cabins changed	17-07-09	D.J.		
C	box update	25-05-2009			
B	general update	9-03-2009			
A	general update	21-9-2008			

SHIPYARD FERUS SMIT B.V.	P.O. Box 147	4300 AC Hoogvliet	462500
Westerbroek	The Netherlands	Tel. +31-10951-462500	Fax +31-10951-462500
GENERAL ARRANGEMENT			
FS10500/159A	General corp. ship	ISSUED BY: RB/WW	SCALE: 1/125
DATE: 9-10-2007	ISSUED BY: RB/WW	VAR. NO. 396	CHECKED:
© COPYRIGHT BY SHIPYARD FERUS SMIT B.V.			