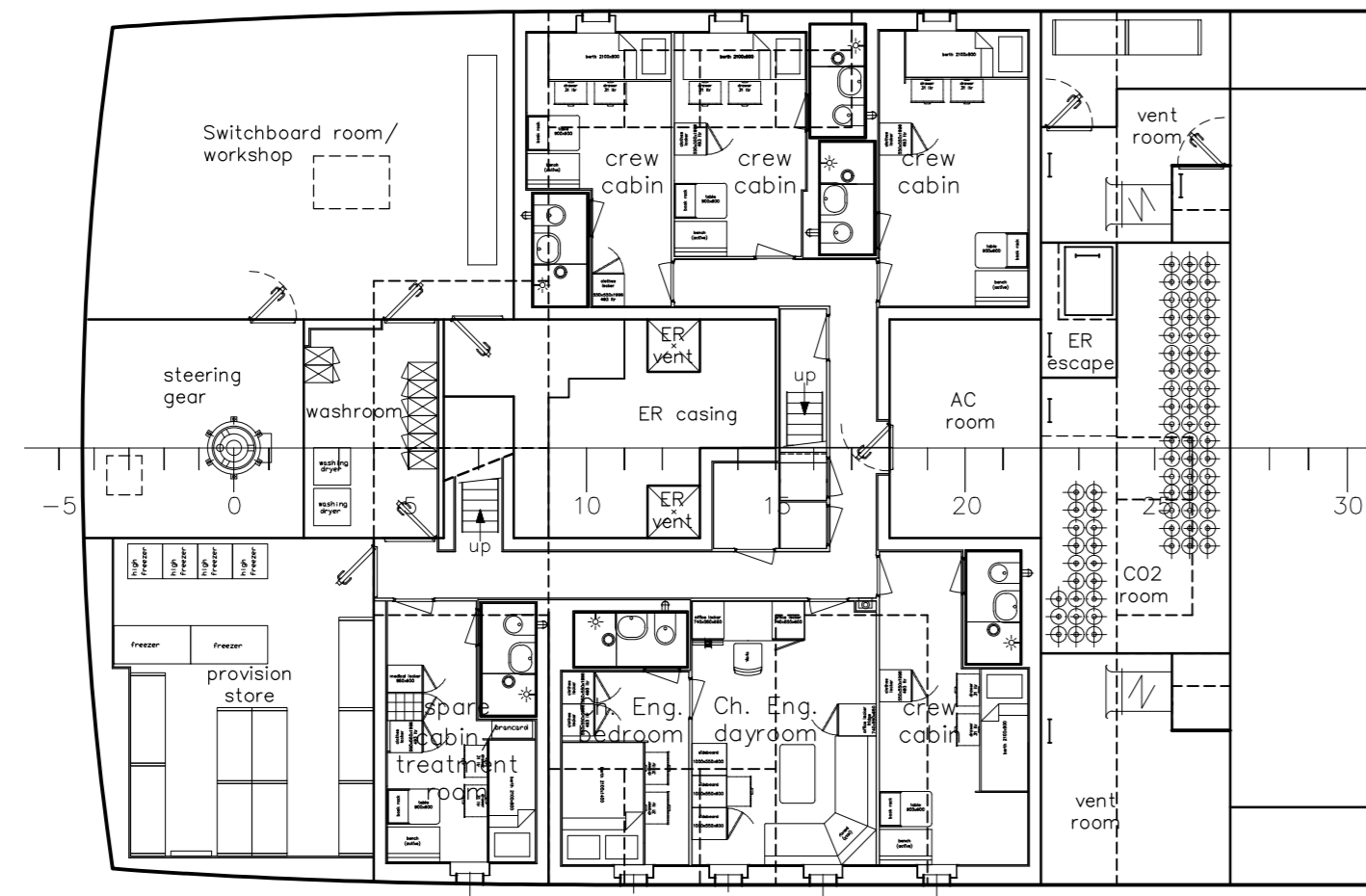
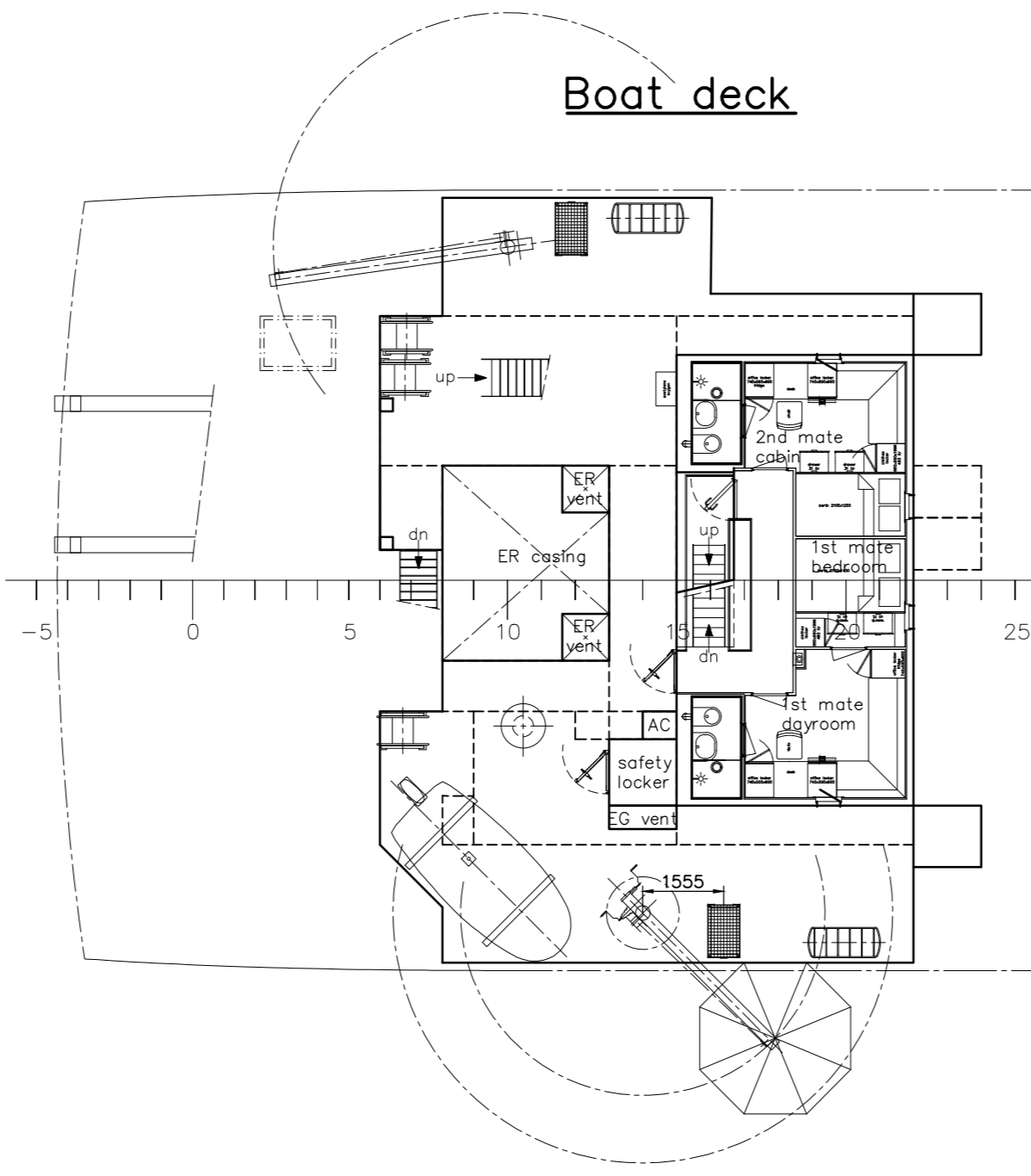


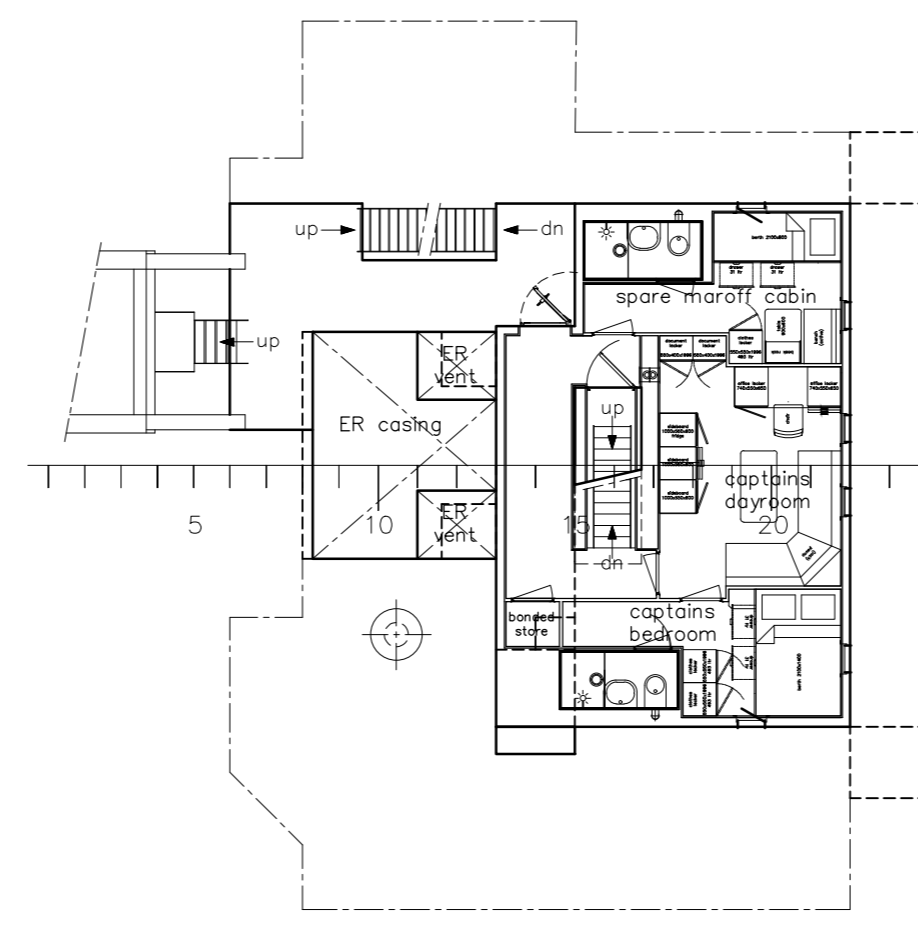
Main deck



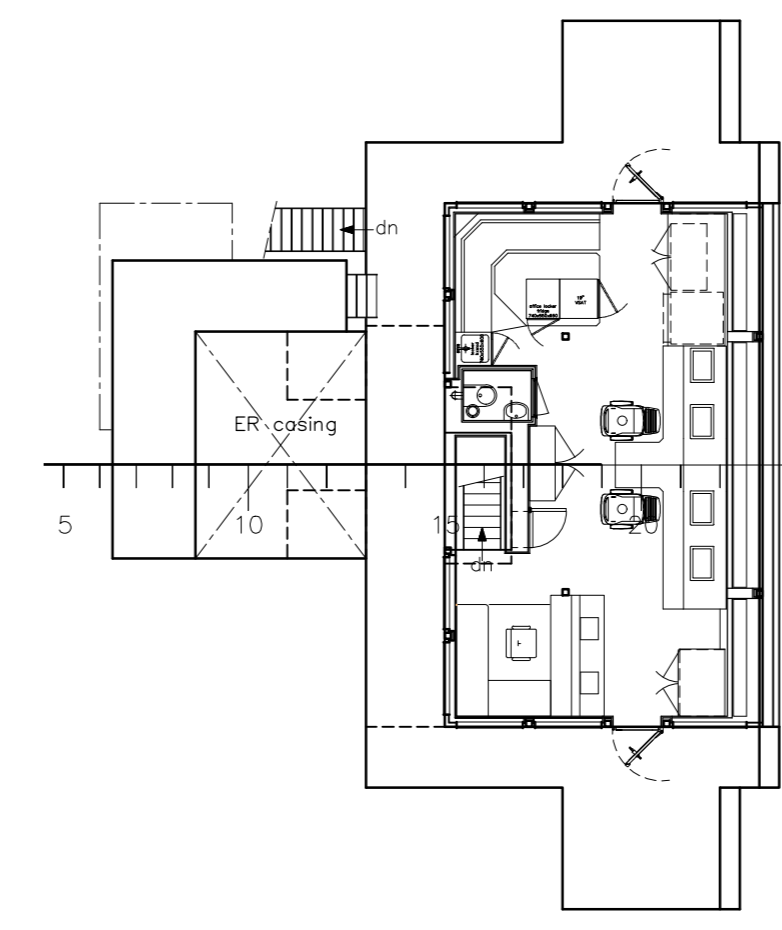
Boat deck



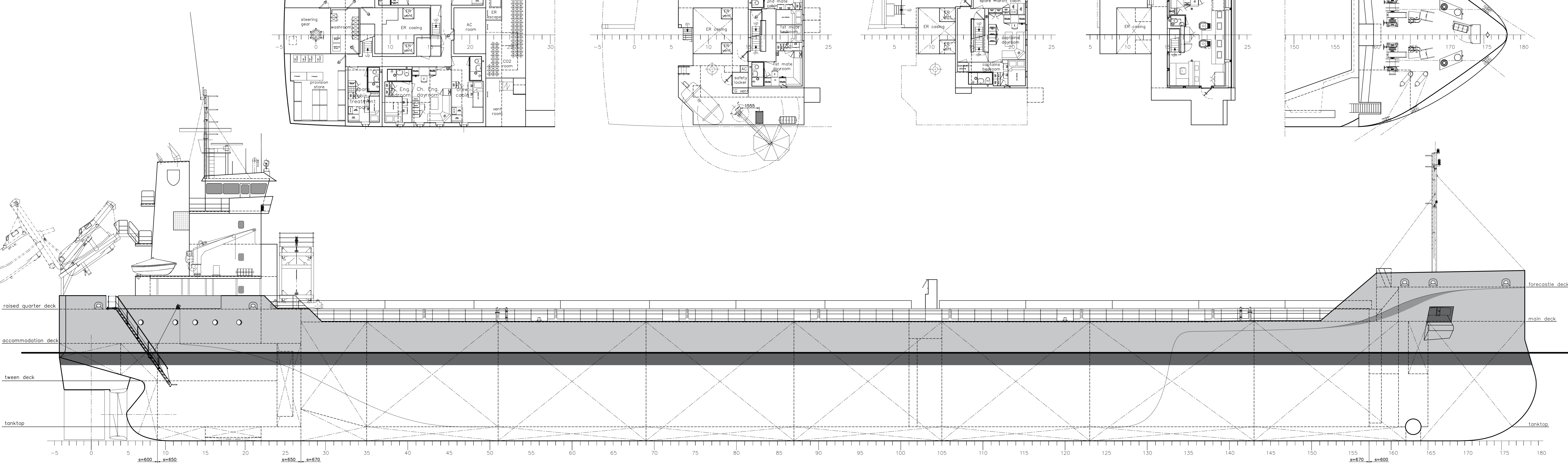
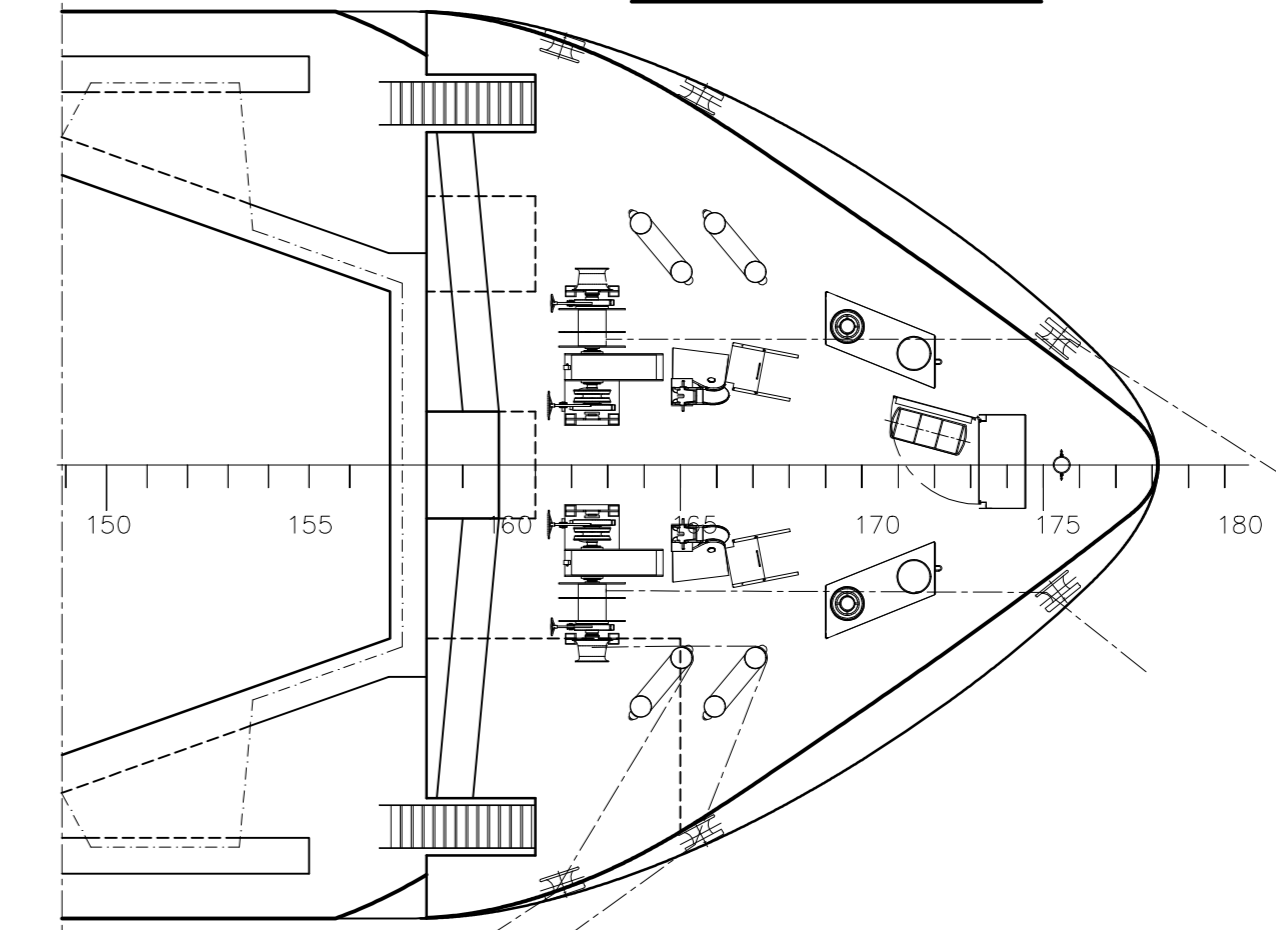
Captains deck



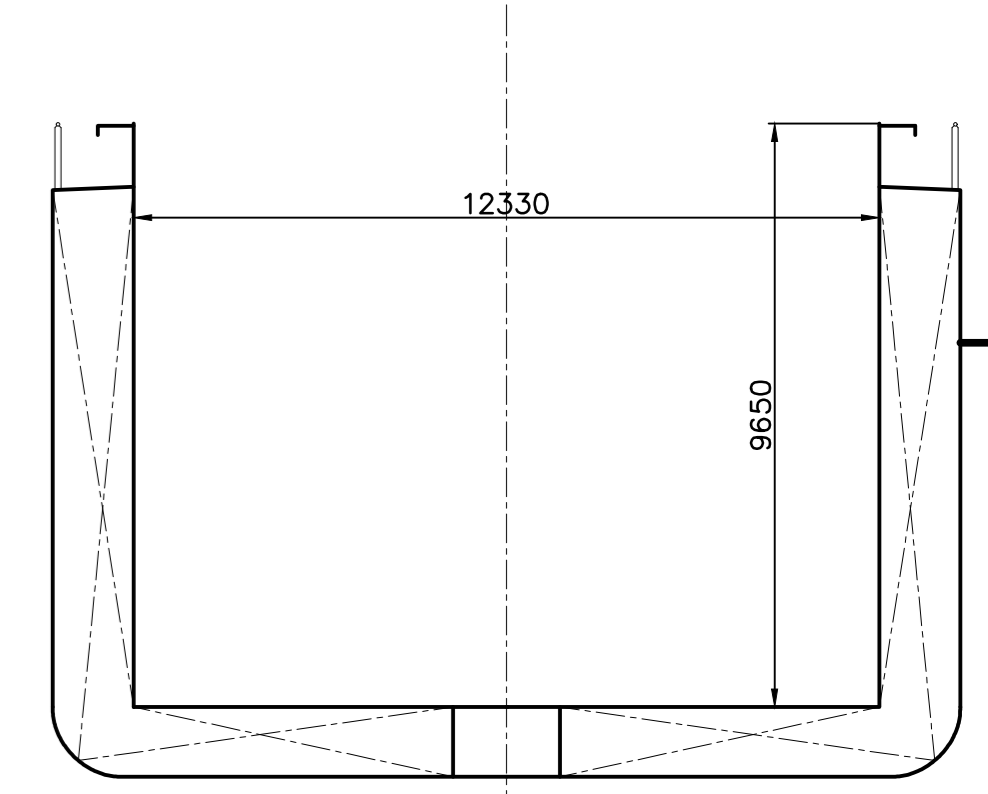
Bridge deck



Forecastle deck

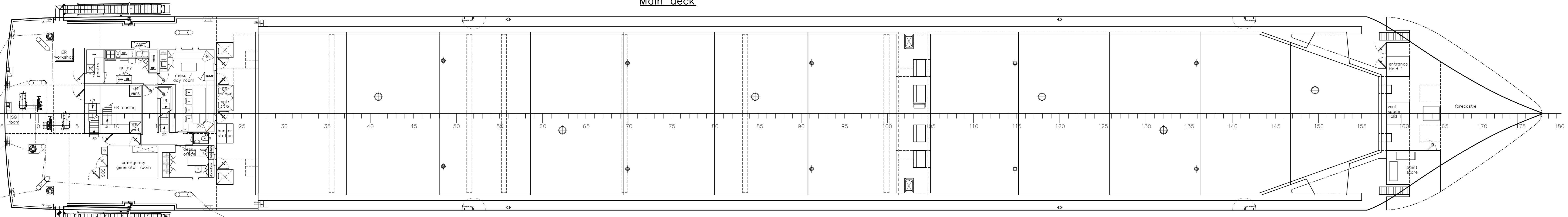


Cross Section

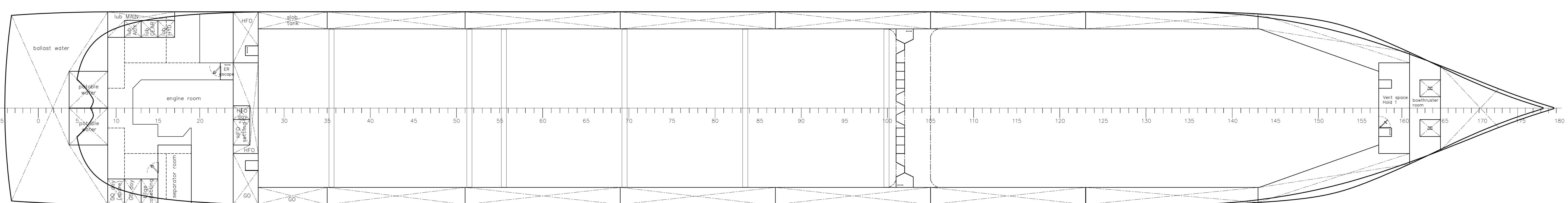


Raised Quarter deck

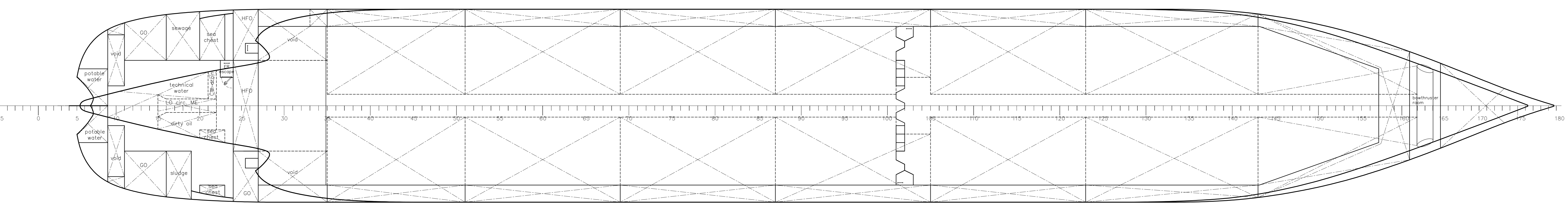
Main deck



Tween deck



Tank top



GENERAL PARTICULARS

Length o.a. 120.450 m
 Length l.l. 116.895 m (Load Line)
 Breadth 14.990 m (moulded)
 Depth 9.700 m (moulded)
 Draught 7.186 m (moulded)
 Deadweight 8400 DWT (about)
 Cargo Hold Volume 350.000 cuft (about)
 Power 2000 kW (100%)

CLASS NOTATION

Bureau Veritas I * HULL * MACH
 General Cargo Ship
 heavy cargo 15 t/m² uniform
 heavy cargo 20 t/m² non-uniform
 Unrestricted Navigation
 * AUT - UMS
 MON-SHAFT
 INWATERSURVEY
 ICE CLASS 1A (Finnish Swedish)

C	TOILET ON BRIDGE	18-12-2018
B	REMARKS ARKLOW	16-11-2018
A	UPDATED	02-11-2018
NO.	ALTERATION	DATE

SHIPYARD FERUS SMIT B.V.
 Westerbroek / Leer

P.O.Box 147
 9600 AC, Hoogeveen
 The Netherlands

Tel. +31-(0)50-4042555
 Fax +31-(0)50-4042500
 Web www.ferus-smit.nl

GENERAL PLAN

SCALE 1:125 YARD NO. 437 TYPE FS8500-1A
 DATE 30-03-2017 IMO NO. DRWG. FS 01-100-1
 FORMAT A0 © COPYRIGHT BY SHIPYARD FERUS SMIT B.V.