

# Arklow Rebel

## General Ship's Particulars

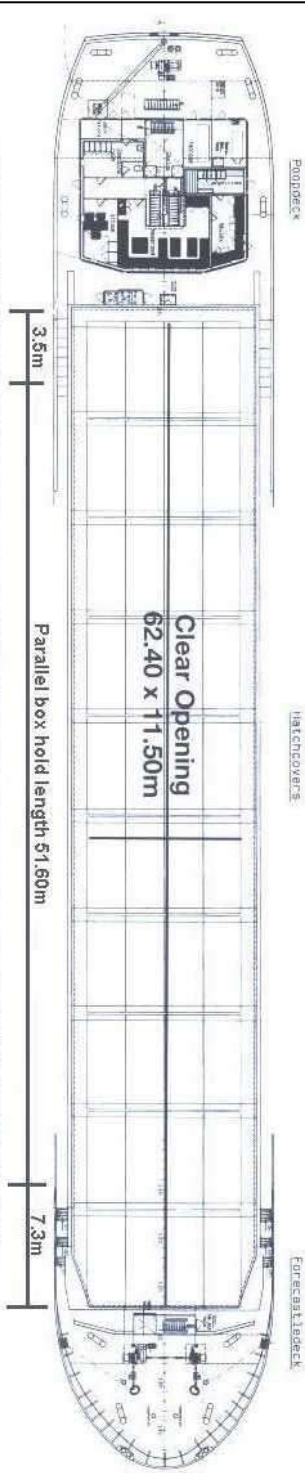
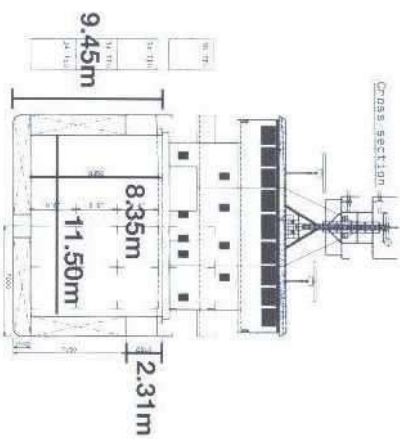
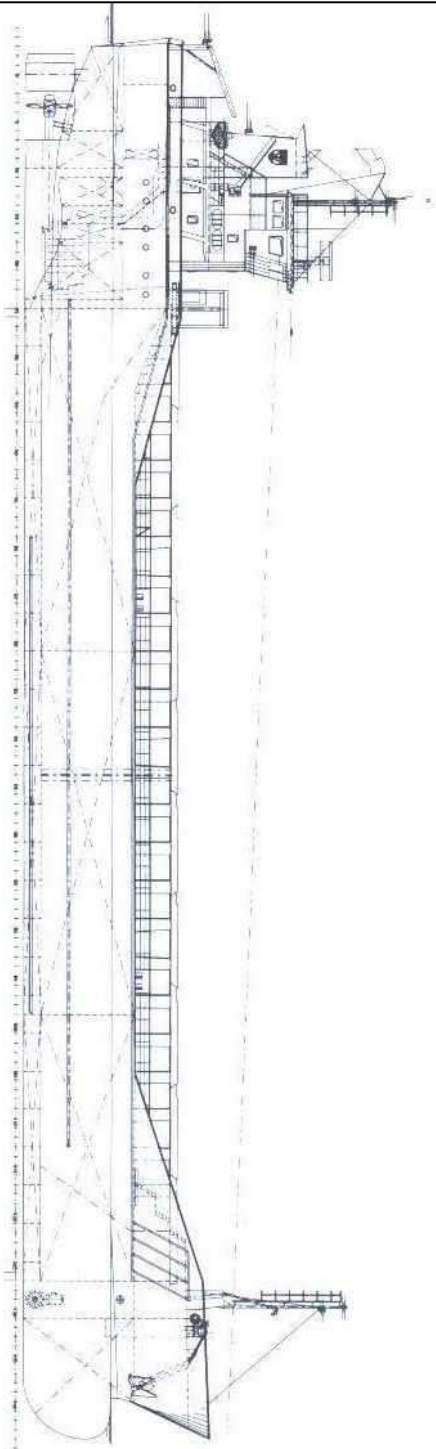


Class Notation				
<b>I + HULL + MACH, General Cargo Ship-Heavy Cargo (105kN/m<sup>2</sup>) Non homload, unrestricted navigation, + AUT- MON-SHAFT STRENGTHBOTTOM</b>				
Port of Registry	Yard	Year of Build	Class	P&I
<b>ARKLOW</b>	<b>Barkmeijer Stroobos, Holland</b>	<b>2005</b>	<b>BUREAU VERITAS</b>	<b>NORTH OF ENGLAND</b>
Call Sign	IMO Number	Class Number	Official Number	
<b>EI-VG</b>	<b>9291731</b>	<b>04204W</b>	<b>403347</b>	
Email	Contact Number	Sat Phone	MMSI	
<a href="mailto:AREBEL@ARKSHIP.IE">AREBEL@ARKSHIP.IE</a>	<b>+353 87 290 4558</b>	<b>+870 773 242089</b>	<b>250000444</b>	

Length OA	Length BP	Breadth Mld	TPC
<b>89.99m</b>	<b>84.98m</b>	<b>14.00m</b>	<b>11.5</b>
Summer Load Draft	Summer Deadweight	Winter Load Draft	Winter Deadweight
<b>6.1m</b>	<b>4868.0</b>	<b>5.973m</b>	<b>4721.3</b>
GT/NT	Min air draft	Ballast draft	Min coaming ht above waterline
<b>2,999/1,639</b>	<b>20.60m</b>	<b>4.40m</b>	<b>5.1m</b>

Hold Capacity	Grain & Bale (ft <sup>3</sup> /m <sup>3</sup> )	Hatch Dimensions	Portable Bulkheads
<b>Incl Bulkheads</b>	<b>207391/5873</b>	<b>62.4m x 11.5m x 8.35m</b>	<b>2 may be placed in 9 positions for cargo separation</b>
<b>Bulkheads stowed midship</b>	<b>206541/5849</b>		
<b>Hatches</b>	<b>Roden Staal Pontoon System</b>	<b>Max hatch top/tank top loading</b>	<b>1.5t-m<sup>2</sup>/15mt-m<sup>2</sup></b>

Other			
Co2 Fire Suppression in Cargo Holds	ER Bulkhead A60 insulated	ER fitted with CO <sub>2</sub> and flexi fog	Electric Bowthruster 250kW

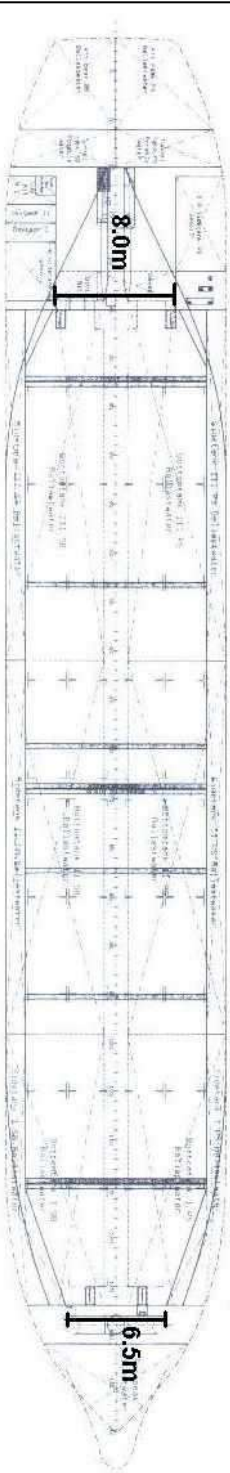


Clear Opening  
62.40 x 11.50m

Parallel box hold length 51.60m

3.5m

7.3m



8.0m

6.5m

- Length with bulkheads stowed fwd 54.40m
- Length with bulkheads stowed aft 57.50m
- Length with 1 bulkhead stowed fwd and aft 50.50m