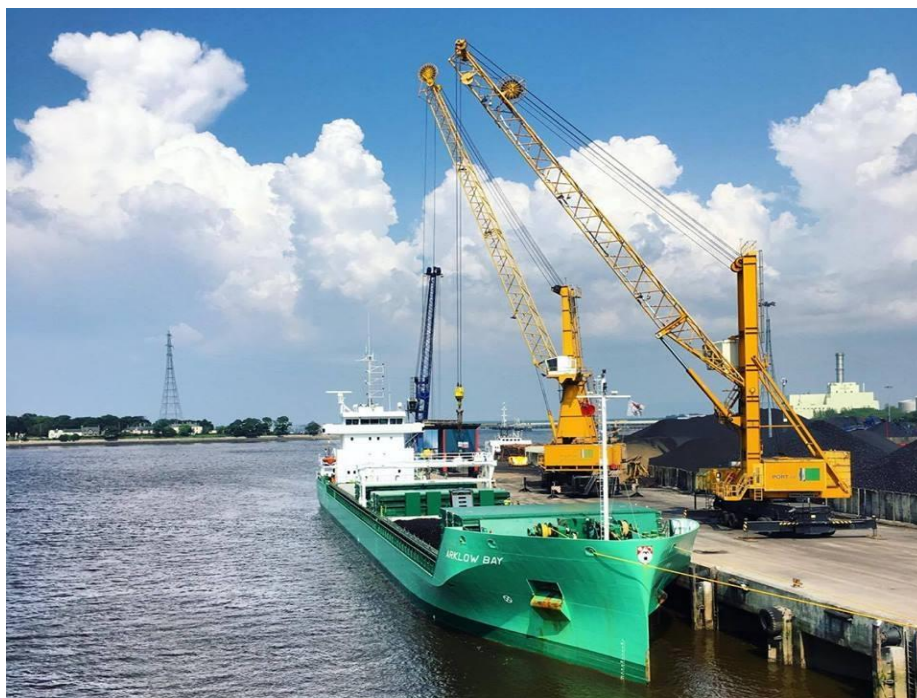


# M.V. Arklow Bay



Port of Registry	Rotterdam, The Netherlands	Yard	Ferus Smit
Call Sign	PBPI	Year of Build	2014
IMO No.	9638771	Class	Bureau Veritas
MMSI No	244700336	Class	Class 1, Hull, Mach,
		Notation	General Cargo Ship
Inmarsat-C (telex)	424400958		Heavy Cargo, Mon-Shaft
	424400959		Unrestricted Navigation
			Strength Bottom, AUT-UMS, IWS,
Email	bay@arklowships.nl	Class No.	20401 C
GSM telephone (Dutch)	+31 641228771	Official No.	00000 Z 2014



## Principal Particulars

Length OA	119.49m
Length BP	116.89m
Breadth Mld	14.99m
Depth Mld	9.70m
Summer Load Draft	7.186m
Min. airdraft is	21.5m
at max. summer draft of	7.186m
Min. coaming ht above WL	3,614m
GT	5065t
NT	2655t
Displacement	10815t
Total Deadweight	8660t
Ballast	3547m <sup>3</sup>
Fuel – HFO	286m <sup>3</sup>
Fuel – GO	38m <sup>3</sup>
Fresh Water	53m <sup>3</sup>
Lub Oil	22 m <sup>3</sup>

<b>Hold Capacities</b>	Grain & Bale	
	m <sup>3</sup>	ft <sup>3</sup>
No. 1 hold	4034,7	142.484
No. 2 hold	5867,9	207.222
<b>Total</b>	<b>9902,6</b>	<b>349.706</b>

Portable bulkhead may be placed in 5 positions for cargo separation and storage position

<b>Hatches:</b> Coops & Nieborg pontoon system	
Maximum hatch top loading	1.75t/m <sup>2</sup>
Maximum tank top loading	15mt/m <sup>2</sup>
Bottom strengthened for loading aground	
Tank top strengthened for heavy cargoes	

CO<sub>2</sub> fire extinguishing system in hold  
 Engine room fitted with CO<sub>2</sub> and LAFF  
 Certified for the carriage of dangerous goods of IMO Class 1.4, 2.1, 2.2, 2.3, 3, 4.1, 4.2, 5.1, 6.1, 8 and 9

### Main Engine:

MaK 8M25 2660 kW with Jake Gearbox and Berg controllable pitch propeller

### Auxiliaries:

2 x Sisu Diesel 213kW 1500rpm

### Generators:

2 x Aux generator 213kW  
 1 x Emergency Generator 90kW  
 1 x shaft alternator 389kW

**Speed:** abt. 13.1 knots

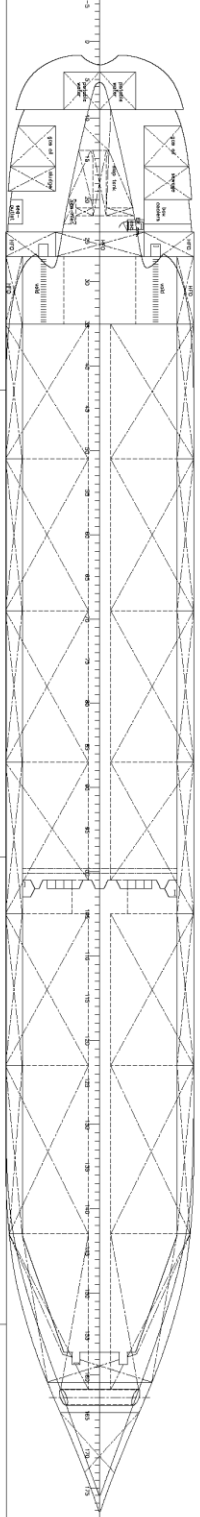
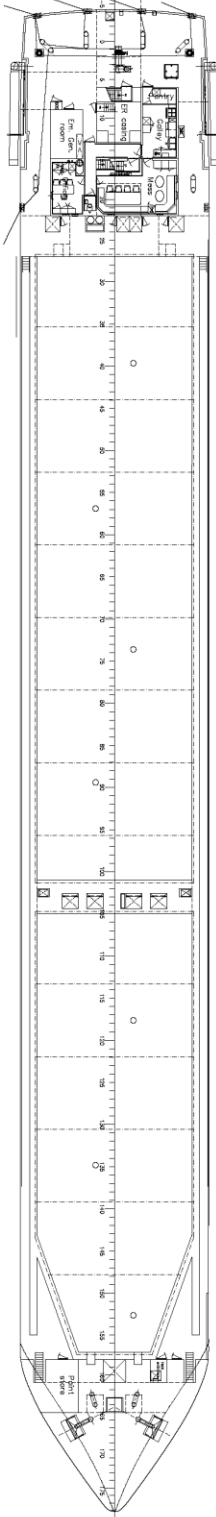
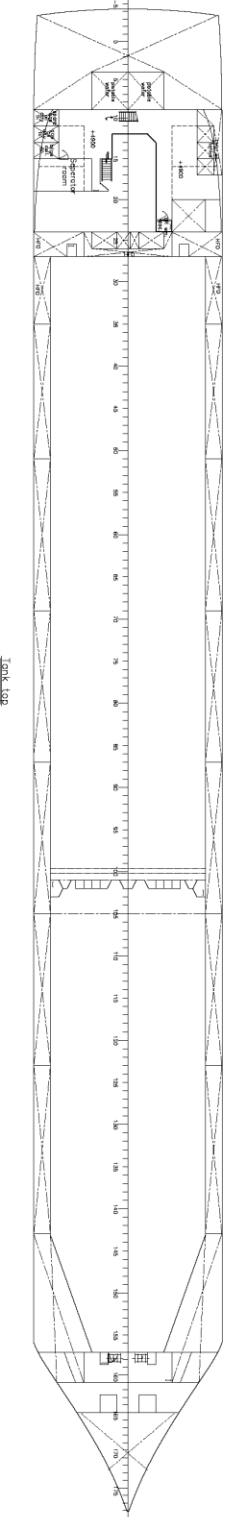
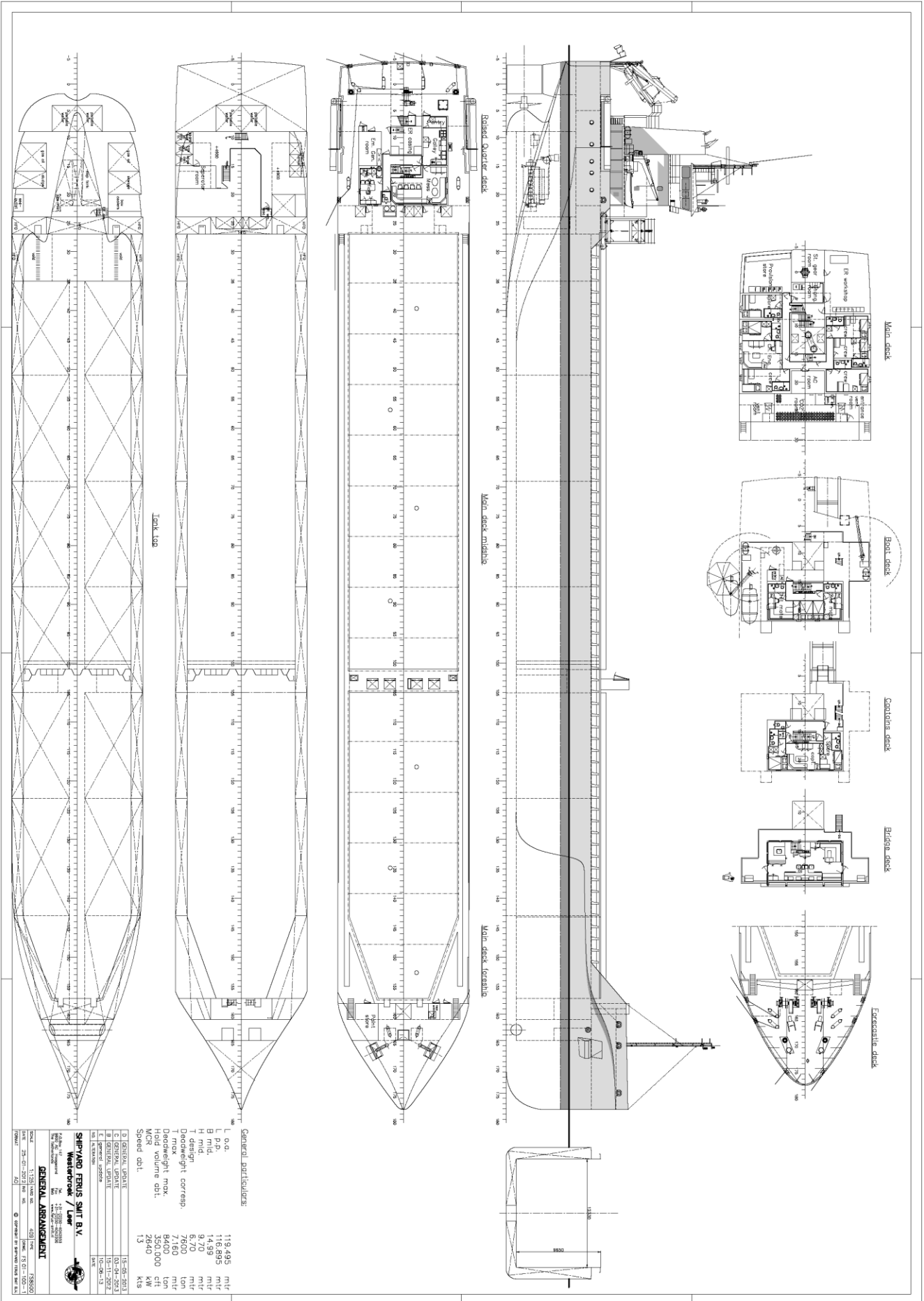
### Consumption:

In port – abt. 1t Gas Oil per day  
 At sea – abt. 11t HFO per day

### Equipment

GMDSS (A3), 2x radars, navtex, Echo sounder, speed/distance log  
 2x GPS receivers, A/P, ECDIS, gyro/magnetic compasses,  
 1x electric bowthrustrer 380kW

# M.V. ARKLOW BAY



General particulars:

L o.a.	119.495	mtr
L p.p.	116.895	mtr
B mid.	14.39	mtr
H mid.	8.70	mtr
Draught max.	7.600	ton
T max	7.160	mtr
Deadweight max.	8400	ton
MOR volume dwt.	264000	cub
MOR volume dwt.	2640	cub
Speed dwt.	13	kts

SHIPYARD FERUS SHIP B.V.

11-05-2013  
 10-04-2013  
 10-11-2012  
 10-06-13

GENERAL ARRANGEMENT  
 SCALE: 1:1250 (see also 428) mm  
 DRAWN: 25-01-2012 (see also 428) mm  
 CHECKED: 15-01-2012 (see also 428) mm  
 APPROVED: 05-02-2012 (see also 428) mm