

# M.V. Arklow Beach

Port of Registry	Rotterdam, The Netherlands	Yard	Ferus Smit
Call Sign	PCVD	Year of Build	2014
IMO No.	9638783	Class	Bureau Veritas
MMSI No	244820165	Class	Class 1, Hull, Mach,
		Notation	General Cargo Ship
Inmarsat-C (telex)	424400795		Heavy Cargo, Mon-Shaft
	424400796		Unrestricted Navigation
			Strength Bottom, AUT-UMS, IWS,
Email	beach@arklowships.nl	Class No.	20402 D
GSM telephone (Dutch)	+31 652366478	Official No.	



## Principal Particulars

Length OA	119.49m
Length BP	116.89m
Breadth Mld	14.99m
Depth Mld	9.70m
Summer Load Draft	7.186m
Min. air draft is	21.5m
at max. summer draft of	7.186m
Min. coaming ht above WL	3,614m
GT	5065t
NT	2655t
Displacement	10815t
Total Deadweight	8660t
Ballast	3547m <sup>3</sup>
Fuel – HFO	286m <sup>3</sup>
Fuel – GO	38m <sup>3</sup>
Fresh Water	53m <sup>3</sup>
Lub Oil	22 m <sup>3</sup>

Hold Capacities	Grain & Bale	
	m <sup>3</sup>	ft <sup>3</sup>
No. 1 hold	4034,7	142.484
No. 2 hold	5867,9	207.222
<b>Total</b>	<b>9902,6</b>	<b>349.706</b>

Portable bulkhead may be placed in 5 positions for cargo separation and storage position

Hatches: Coops & Nieborg pontoon system	
Maximum hatch top loading	1.75t/m <sup>2</sup>
Maximum tank top loading	15mt/m <sup>2</sup>
Bottom strengthened for loading aground	
Tank top strengthened for heavy cargoes	

CO<sub>2</sub> fire extinguishing system in hold  
 Engine room fitted with CO<sub>2</sub> and LAFF  
 Certified for the carriage of dangerous goods of IMO Class 1.4, 2.1, 2.2, 2.3, 3, 4.1, 4.2, 5.1, 6.1, 8 and 9

### Main Engine:

MaK 8M25 2660 kW with Jake Gearbox and Berg controllable pitch propeller

### Auxiliaries:

2 x Sisu Diesel 213kW 1500rpm

### Generators:

2 x Aux generator 213kW

1 x Emergency Generator 90kW

1 x shaft alternator 389kW

**Speed:** abt. 13.1 knots

### Consumption:

In port – abt. 1t Gas Oil per day

At sea – abt. 11t HFO per day

### Equipment

GMDSS (A3), 2x radars, navtex,

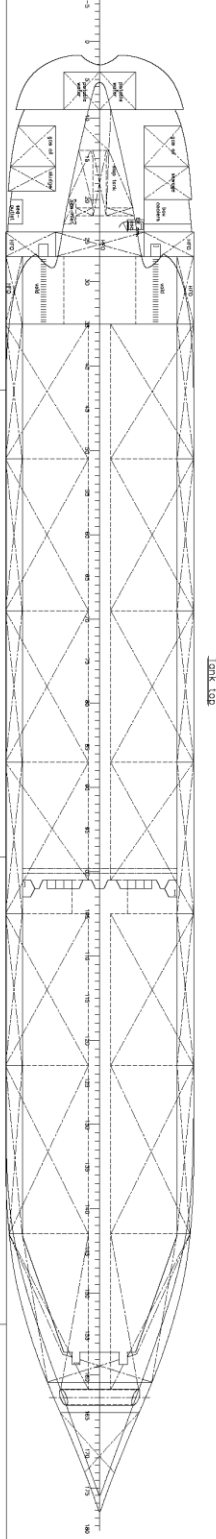
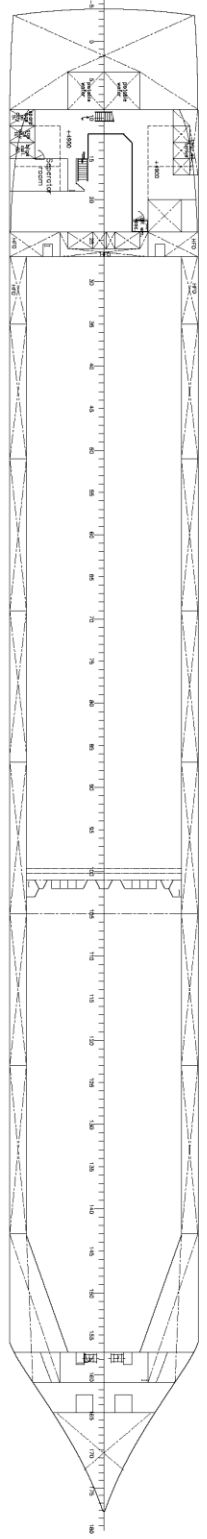
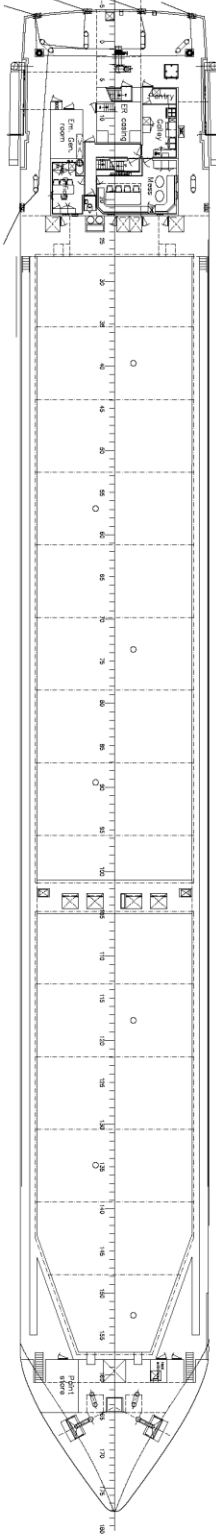
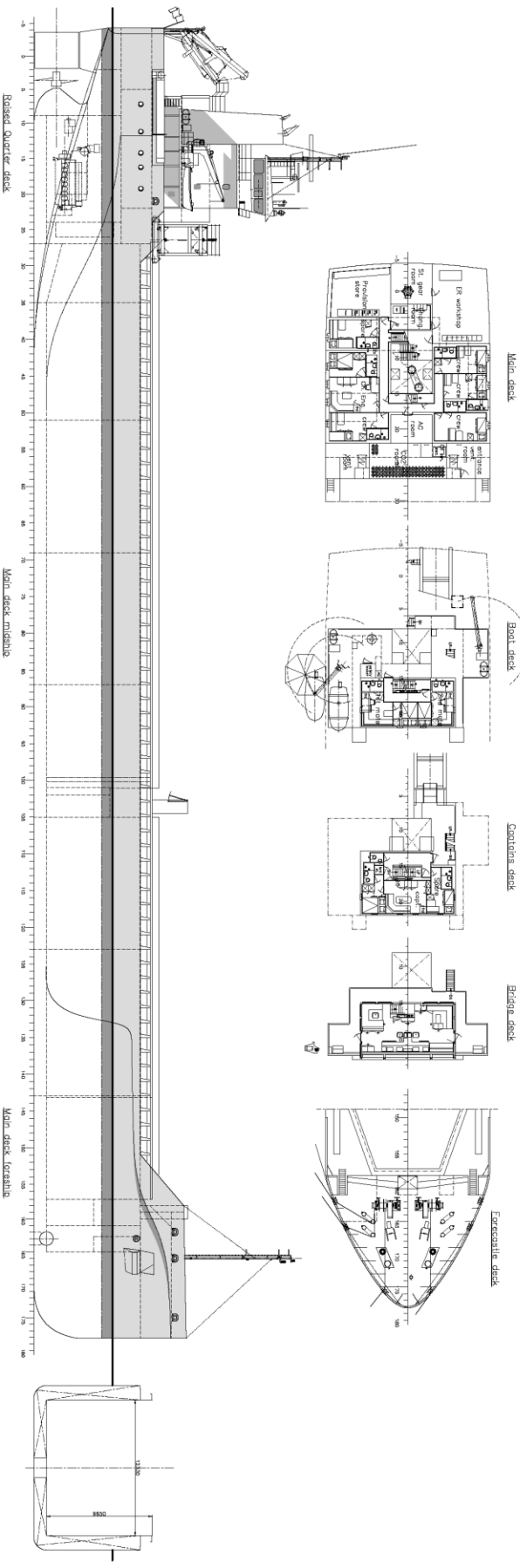
Echo sounder, speed/distance log

2x GPS receivers, A/P, ECDIS,

gyro/magnetic compasses,

1x electric bowthrustrer 380kW

# M.V. ARKLOW BEACH



**General particulars:**

L o.a.	119,495	mtr
L p.p.	116,895	mtr
B mid.	14,39	mtr
H mid.	8,70	mtr
Draught	8,70	mtr
Deadweight	7600	ton
T mix	7,160	mtr
Deadweight max.	8400	ton
MOG	264000	cwt
MOG volume dwt.	2640	cwt
Speed dwt.	13	kts

**SHIPYARD FERUS SHIP B.V.**

11-05-2013  
10-04-2013  
10-11-2012  
10-06-13

**GENERAL ARRANGEMENT**

SCALE: 1:1250 (side view), 1:500 (deck plans)  
DRAWN: 25-07-2012 (side view), 15-07-12 (deck plans)  
REVISION: 01