

M.V. Arklow Brave

Port of Registry	Rotterdam, The Netherlands	Yard	Ferus Smit
Call Sign	PBPR	Year of Build	2015
IMO No.	9638800	Class	Bureau Veritas
MMSI No	244730944	Class	Class 1, Hull, Mach,
		Notation	AUT-UMS, IWS, Strength bottom,
Inmarsat-C (telex)	424401050 424401051		Heavy Cargo, General Cargo
Email	brave@arklowships.nl	Class No.	20404F
GSM telephone (Dutch)	+316 46 16 53 50	Official No.	00000 Z 2015

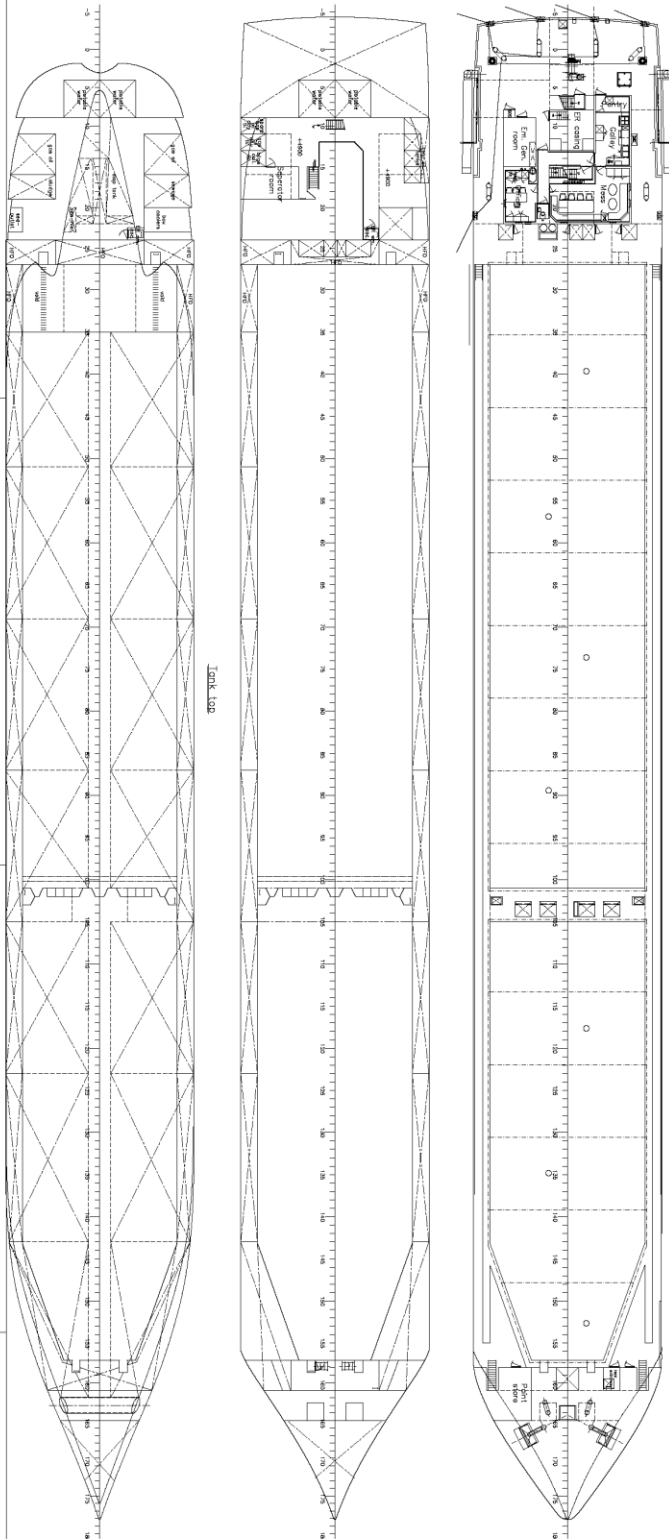
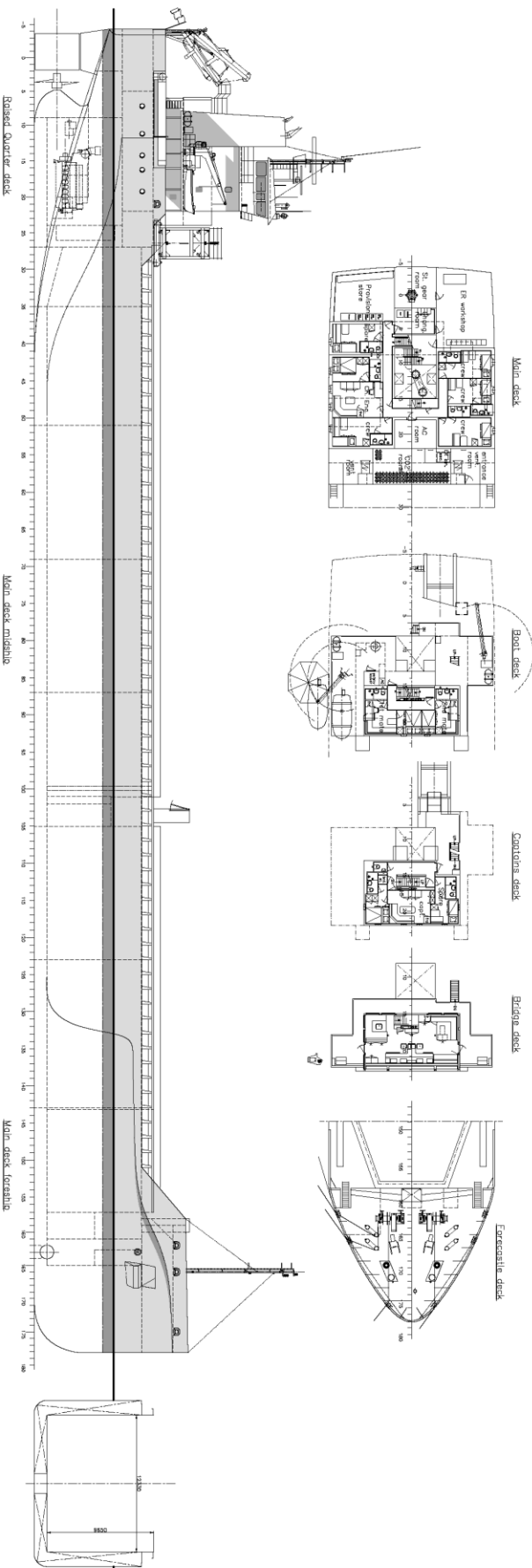


Principal Particulars

mo

Length OA	119.49m	Hold Capacities	Grain & Bale	Main Engine:
Length BP	116.89m		m³	ft³
Breadth Mld	14.99m	No. 1 hold	4034,7	142.484
Depth Mld	9.70m	No. 2 hold	5867,9	207.222
Summer Load Draft Mld	7.186m	Total	9902,6	349.706
		Portable bulkhead may be placed in		
Min. airdraft is	21.5m	5 positions for cargo separation		
at max. summer draft of	7.186m	and storage position		
Min. coaming ht above WL	3,614m	Hatches:	Coops & Nieborg pontoon system	
GT	5065t	Maximum hatch top loading	1.75t/m ²	
NT	2655t	Maximum tank top loading	15mt/m ²	
Total Deadweight	8660t	Bottom strengthened for loading aground		
Ballast	3547m ³	Tank top strengthened for heavy cargoes		
Fuel – HFO	286m ³	CO ₂ fire extinguishing system in hold		
Fuel – GO	38m ³	Engine room fitted with CO ₂ and LAFF		
Fresh Water	53m ³	Certified for the carriage of dangerous goods of IMO Class 1.4, 2.1, 2.2, 2.3, 3, 4.1, 4.2, 5.1,6.1,8 and 9		
Lub Oil	22 m ³			
		Auxiliaries:	2 x Sisu Diesel 213kW 1500 rpm	
		Generators:	2 x Aux generator 213kW	
			1 x Emergency Generator 90kW	
			1 x shaft alternator 389kW	
		Speed:	abt. 13.1 knots	
		Consumption:	In port – abt. 1t Gas Oil per day	
			At sea – abt. 11t HFO per day	
		Equipment	GMDSS (A3), 2x radars, navtex, Echo sounder, speed/distance log	
			2x GPS receivers, A/P, ECDIS, gyro/magnetic compasses,	
			1x electric bowthruuster 380kW	

M.V. ARKLOW BRAVE



General particulars

L o.p.	119,495	mt
B p.p.	116,895	mt
B mid.	14,59	mt
T mid.	8,70	mt
Draught	8,70	mt
Displacement	7,600	ton
T max.	7,160	mt
Deckweight max.	8,400	ton
MOS	84,000	cwt
MOS volume est.	26,40	cwt
Speed est.	13	kts

SHIPYARD FERUS SMIT B.V.
 Westendorp 1
 1118 CA Amsterdam, The Netherlands
 Tel: +31 (0)20 674 1111
 Fax: +31 (0)20 674 1112
 E-mail: info@ferus.nl

GENERAL ARRANGEMENT

SCALE	1:125	DATE	15-05-2013
NO.	1-2013	REV.	01
DESIGNER	FERUS SMIT B.V.	PROJECT	M.V. ARKLOW BRAVE
CHECKED	J. van der Vliet	DATE	15-05-2013
APPROVED	J. van der Vliet	DATE	15-05-2013