

Arklow Dale

General Ship's Particulars



Class Notation				
I + Hull + Mach, General Cargo ship Container Ship Heavy Cargo, Unrestricted navigation, +Aut-Ums, Inwatersurvey, Ice Class IA				
Port of Registry	Yard	Year of Build	Class	P&I
ARKLOW	Ferus Smit	2010	BUREAU VERITAS	NORTH OF ENGLAND
Call Sign	IMO Number	Class Number		Official Number
EI-TT-8	9504126	15355S		404998
Email	Contact Number	Sat Phone	MMSI	
adale@arkship.ie	+353 87 333 2620	+353 76 670 5508	250005054	

Length OA	Length BP	Breadth Mld	TPC
132.6m	126.35m	15.87m	19.67
Summer Load Draft	Summer Deadweight	Winter Load Draft	Winter Deadweight
7.835m	10806	7.672m	10539
GT/NT	Min air draft	Ballast draft	Min coaming ht above waterline
6687T/3448T	34.4m	7.53m	6.6m

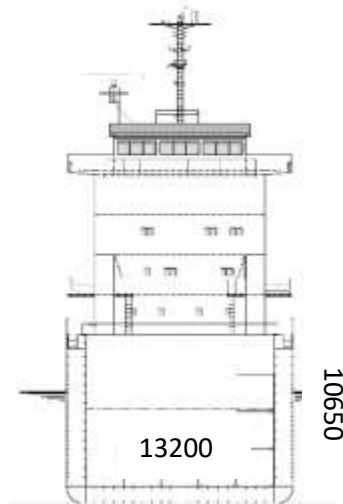
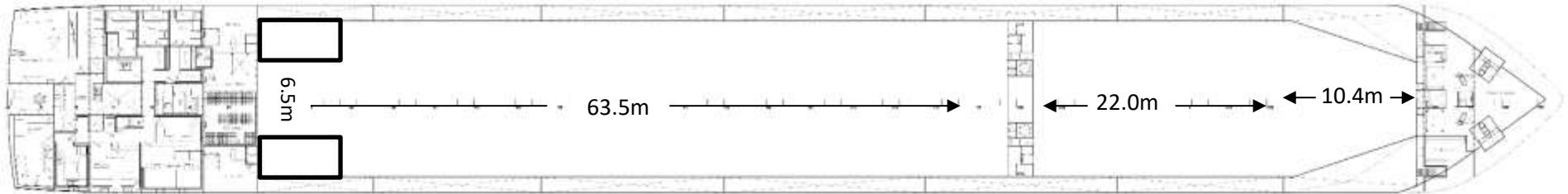
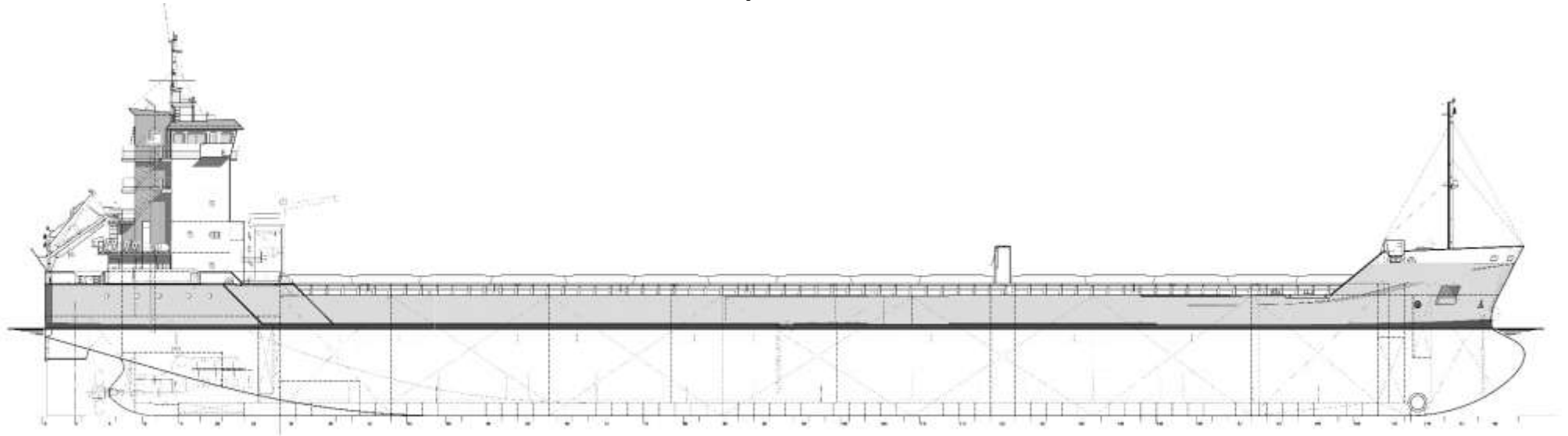
Hold Capacities	No.1 Hold	No. 2 Hold	Total
Grain & Bale M ³	4157.71	8851.08	13008.79
Grain & Bale Ft ³	146,828	312,573	459,401
Hatch Dimensions	32.5m x 13.2m x 10.62m	64.0m x 13.2m x 10.62m	

Mechanical Ventilation	Max Load on Hatches	Max Load on tank top	Hatch type	Bulkheads
6 changes per hour in empty holds	1.75 t/m²	15mt/m²	Pontoon style	3 portable

Other		
Co2 Fire Suppression in Cargo Holds	ER Bulkhead A60 insulated	ER fitted with CO ₂ and flexi fog
Electric Bowthruster 573kW	Ballast Water Treatment system	Gantry Crane fitted with two derricks

Arklow Dale

General Ship's Particulars



13200

10650