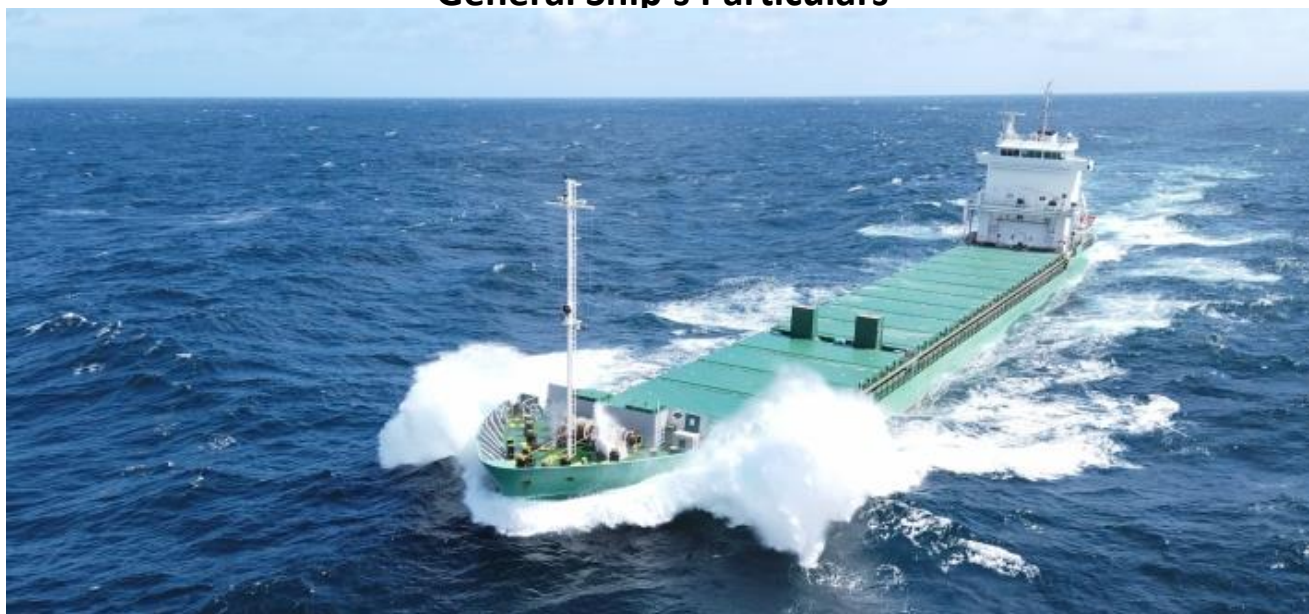


Arklow Day

General Ship's Particulars



Class Notation				
I + Hull + Mach, General Cargo ship Container Ship Heavy Cargo, Unrestricted navigation, +Aut-Ums, Inwatersurvey, Ice Class IA				
Port of Registry	Yard	Year of Build	Class	P&I
ROTTERDAM	Ferus Smit	2011	BUREAU VERITAS	NORTH OF ENGLAND
Call Sign	IMO Number	Class Number		Official Number
PDTV	9504140	15359W		25436 Z 2020
Email	Contact Number	Sat Phone	MMSI	
aday@arkship.ie	+353 87 3675774	+353818042753	245574000	

Length OA	Length BP	Breadth Mld	TPC
132.6m	126.35m	15.87m	19.67
Summer Load Draft	Summer Deadweight	Winter Load Draft	Winter Deadweight
7.835m	10806	7.672m	10539
GT/NT	Min air draft	Ballast draft Aft	Min coaming ht above waterline(Midships)in full ballast condition
6687T/3448T	34.4m	4.800m	7.299m

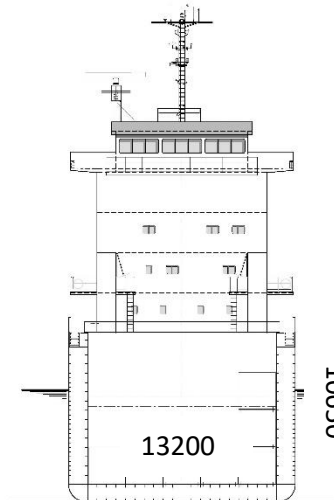
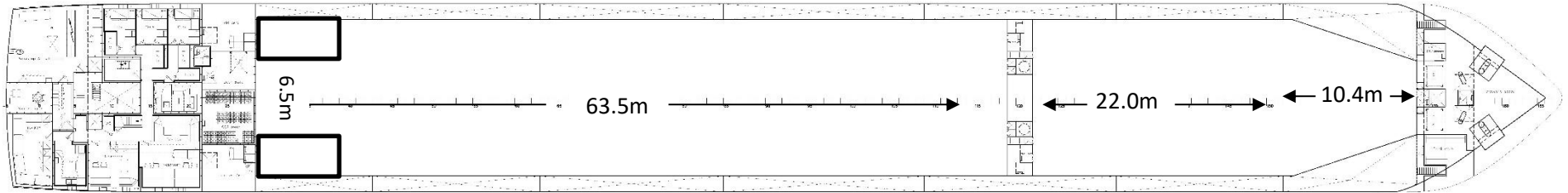
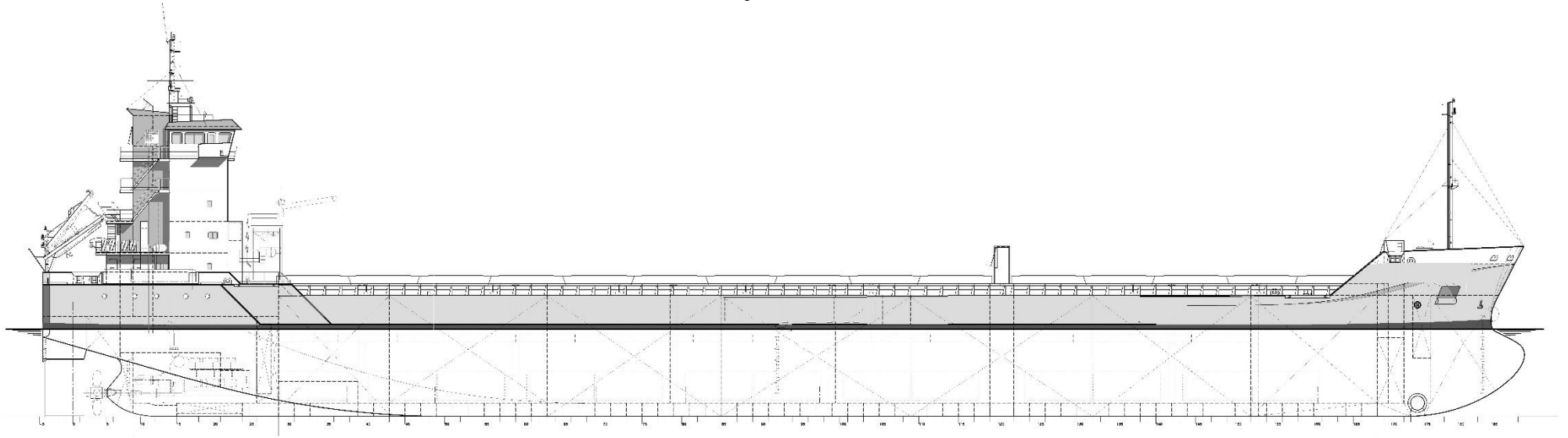
Hold Capacities	No.1 Hold	No. 2 Hold	Total
Grain & Bale M ³	4157.71	8851.08	13008.79
Grain & Bale Ft ³	146,828	312,573	459,401
Hatch Dimensions	32.5m x 13.2m x 10.62m	64.0m x 13.2m x 10.62m	

Mechanical Ventilation	Max Load on Hatches	Max Load on tank top	Hatch type
6 changes per hour in empty holds	1.75 t/m²	15mt/m²	Pontoon style

Other		
Co2 Fire Suppression in Cargo Holds	ER Bulkhead A60 insulated	ER fitted with CO ₂ and flexi fog
Electric Bowthruster 573kW	Ballast Water Treatment system	Gantry Crane fitted with two derricks

Arklow Day

General Ship's Particulars



13200

10650