

# Arklow Dusk

## General Ship's Particulars



Class Notation				
<b>I + Hull + Mach, General Cargo ship Container Ship Heavy Cargo, Unrestricted navigation, +Aut-Ums, Inwatersurvey, Ice Class IA</b>				
Port of Registry	Yard	Year of Build	Class	P&I
<b>Rotterdam</b>	<b>Ferus Smit</b>	<b>2010</b>	<b>BUREAU VERITAS</b>	<b>NORTH OF ENGLAND</b>
Call Sign	IMO Number	Class Number	Official Number	
<b>PDTS</b>	<b>9504114</b>	<b>15355S</b>	<b>25359-Z-2020</b>	
Email	Contact Number	Sat Phone	MMSI	
<a href="mailto:adusk@arkship.ie">adusk@arkship.ie</a>	<b>+353 87 0956540</b>	<b>+353818705521</b>	<b>245534000</b>	

Length OA	Length BP	Breadth Mld	TPC
<b>132.6m</b>	<b>126.35m</b>	<b>15.87m</b>	<b>19.67</b>
Summer Load Draft	Summer Deadweight	Winter Load Draft	Winter Deadweight
<b>7.835m</b>	<b>10806</b>	<b>7.672m</b>	<b>10539</b>
GT/NT	Min air draft	Ballast draft Aft	Min coaming ht above waterline(Midships)in full ballast condition
<b>6621T/3448T</b>	<b>34.4m</b>	<b>4.800m</b>	<b>7.299m</b>

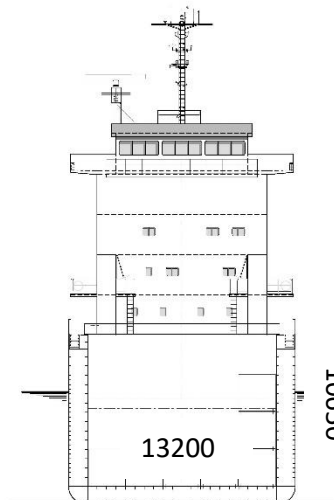
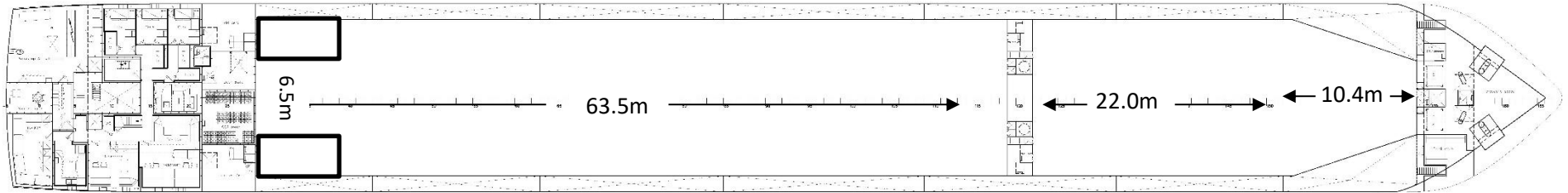
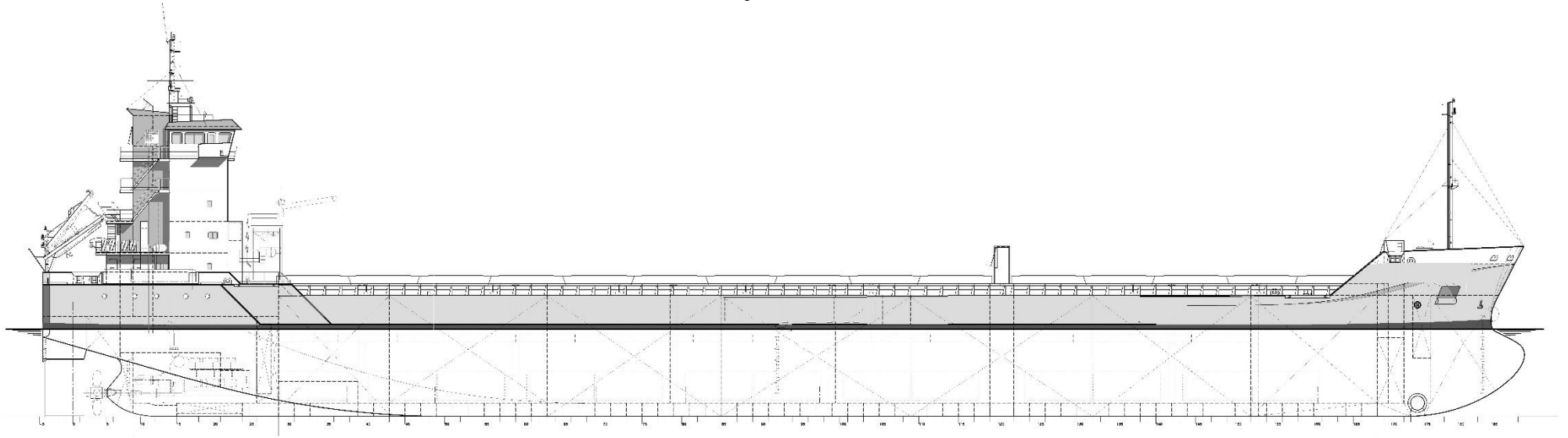
Hold Capacities	No.1 Hold	No. 2 Hold	Total
Grain & Bale M <sup>3</sup>	4157.71	8851.08	<b>13008.79</b>
Grain & Bale Ft <sup>3</sup>	146,828	312,573	<b>459,401</b>
Hatch Dimensions	32.5m x 13.2m x 10.62m	64.0m x 13.2m x 10.62m	

Mechanical Ventilation	Max Load on Hatches	Max Load on tank top	Hatch type
<b>6 changes per hour in empty holds</b>	<b>1.75 t/m<sup>2</sup></b>	<b>15mt/m<sup>2</sup></b>	<b>Pontoon style</b>

Other		
Co2 Fire Suppression in Cargo Holds	ER Bulkhead A60 insulated	ER fitted with CO <sub>2</sub> and flexi fog
Electric Bowthruster 573kW	Ballast Water Treatment system	Gantry Crane fitted with two derricks

# Arklow Dusk

## General Ship's Particulars



13200

10650