

Arklow Racer

General Ship's Particulars



Class Notation

C✘ HULL ✘ MACH, General Cargo Ship, Heavy Cargo, Unrestricted Navigation
✘ AUT-UMS, Strength Bottom, Heavy Cargoes 147 kN/m², MON-SHAFT, IWS

Port of Registry	Yard	Year of Build	Class	P&I
ARKLOW	Royal Bodewes	2023	RINA	NORTH STANDARD
Call Sign	IMO Number	Class Number	Official Number	
EIA2185	9923217	100869	405108	
Email	Contact Number	Sat Phone	MMSI	
aracer@arkship.ie	+353 87 3461738	+353 8188 2143	250013718	

Length OA	Length BP	Breadth Mld	TPC
104.93m	102.98	15.0m	14.6
Summer Load Draft	Summer Deadweight	Winter Load Draft	Winter Deadweight
6.612 m	6,850 mt	6.474 m	6,650 mt
GT/NT	Min air draft	Ballast draft	Min coaming ht above waterline(midship) in full ballast condition
4145t/2101t	23.0m	3.45m	7.6m

Hold 1/Hold 2 Grain & Bale m ³ /f ³	Hatch 1/Hatch 2	Parallel Hold	Max Load Hatch Top
Hold 1: 3594.3m³/126932.00ft³ Hold 2: 5188.8m³/183242.00ft³	33m x 12.6m x 9.296m 44.25m x 12.6m x 9.296m	24.5m x 12.6m x 9.296m 41.25m x 12.6m x 9.296m	2.35mt/m³
Mechanical Ventilation	Max Load tank top	Bulkheads/Hatch Type	
6 changes/HR	15mt/m²	2 portable bulkheads/pontoon type hatches	

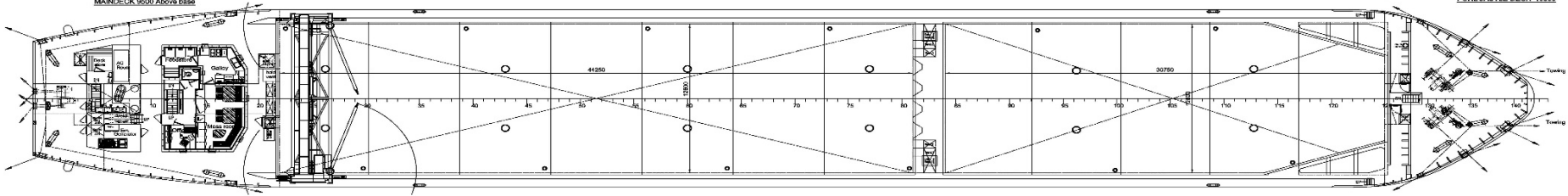
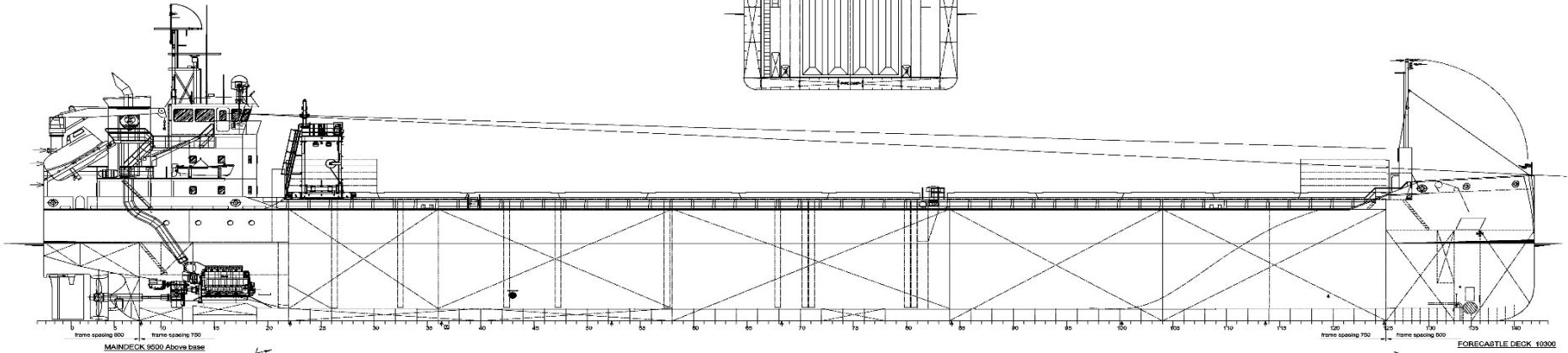
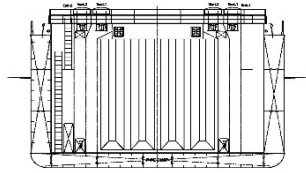
Other

Co2 Fire Suppression in Cargo Holds	BWTS	ER fitted with Co2 & Flexi Fog	Electric Bowthruster 300KW
-------------------------------------	------	--------------------------------	----------------------------

Arklow Racer

General Ship's Particulars

FRAME B1



CROSS SECTION

