

Arklow Racer

General Ship's Particulars



Class Notation

C✘ HULL ✘ MACH, General Cargo Ship, Heavy Cargo, Unrestricted Navigation
✘ AUT-UMS, Strength Bottom, Heavy Cargoes 147 kN/m², MON-SHAFT, IWS

| | | | | |
|--|------------------------|---------------|-----------------------|-------------------------|
| Port of Registry | Yard | Year of Build | Class | P&I |
| ARKLOW | Royal Bodewes | 2023 | RINA | NORTH OF ENGLAND |
| Call Sign | IMO Number | | Class Number | Official Number |
| EIA2185 | 9923217 | | 100869 | 405108 |
| Email | Contact Number | | Sat Phone | MMSI |
| aracer@arkship.ie | +353 87 3461738 | | +353 8188 2143 | 250013718 |

| | | | |
|--------------------|-------------------|-------------------|---|
| Length OA | Length BP | Breadth Mld | TPC |
| 104.93m | 102.98 | 15.0m | 14.6 |
| Summer Load Draft | Summer Deadweight | Winter Load Draft | Winter Deadweight |
| 6.612m | 6885t | 6.465m | 6607t |
| GT/NT | Min air draft | Ballast draft | Min coaming ht above waterline(midship) in full ballast condition |
| 4145t/2101t | 26.98m | 3.45m | 6.65m |

| | | | |
|--|---|---|-----------------------------|
| Hold 1/Hold 2 Grain & Bale m ³ /f ³ | Hatch 1/Hatch 2 | Parallel Hold | Max Load Hatch Top |
| Hold 1: 3594.3m³/126932.00ft³ Hold 2: 5188.8m³/183242.00ft³ | 33m x 12.6m x 9.296m 44.25m x 12.6m x 9.296m | 24.5m x 12.6m x 9.296m 41.25m x 12.6m x 9.296m | 2.35mt/m³ |
| Mechanical Ventilation | Max Load tank top | Bulkheads/Hatch Type | |
| 6 changes/HR | 15mt/m² | 2 portable bulkheads/pontoon type hatches | |

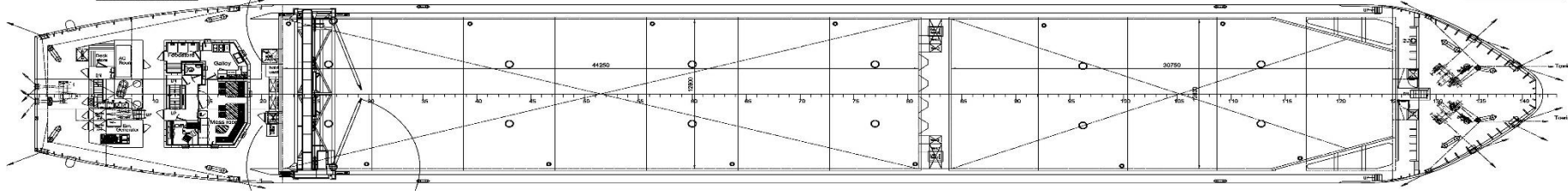
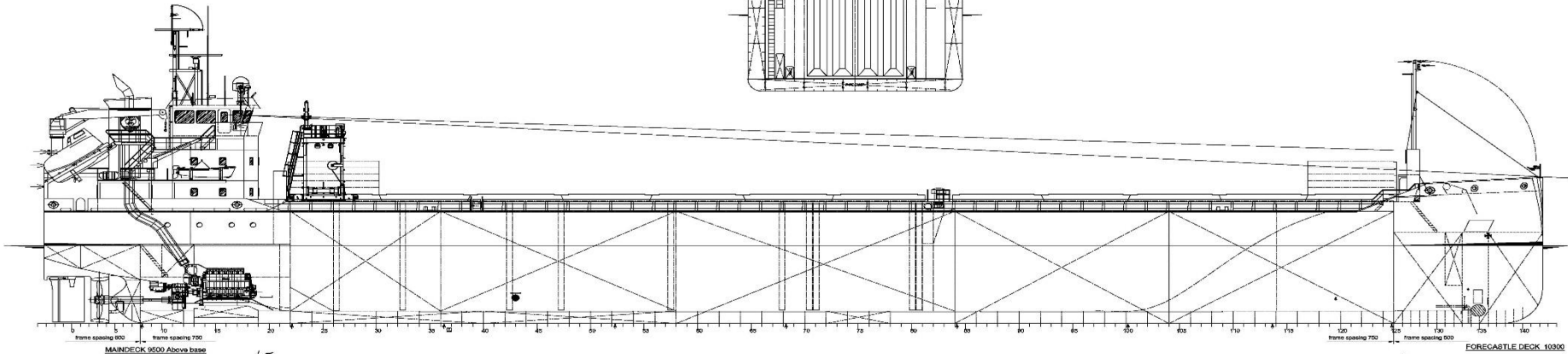
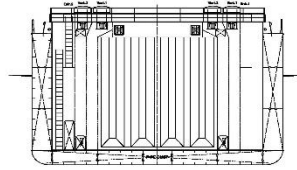
Other

| | | |
|-------------------------------------|------|----------------------------|
| Co2 Fire Suppression in Cargo Holds | BWTS | Electric Bowthruster 300kW |
|-------------------------------------|------|----------------------------|

Arklow Racer

General Ship's Particulars

FRAME 81



CROSS SECTION

