

Arklow Rambler

General Ship's Particulars



Photo courtesy of Henk Zuur

Class Notation				
C✘ HULL ✘ MACH, General Cargo Ship, Heavy Cargo, Unrestricted Navigation ✘ AUT-UMS, Strength Bottom, Heavy Cargoes 147 kN/m ² , MON-SHAFT, IWS				
Port of Registry	Yard	Year of Build	Class	P&I
ARKLOW	Royal Bodewes	2023	RINA	NORTH OF ENGLAND
Call Sign	IMO Number	Class Number	Official Number	
EIA2465	9923231	100872	405394	
Email	Contact Number	Sat Phone	MMSI	
arambler@arkship.ie	+353 87 4870877	+353 402 89126	250013999	

Length OA	Length BP	Breadth Mid	TPC
104.93m	102.98	15.0m	14.6
Summer Load Draft	Summer Deadweight	Winter Load Draft	Winter Deadweight
6.612m	6885t	6.465m	6607t
GT/NT	Min air draft	Ballast draft	Min coaming ht above waterline(midship) in full ballast condition
4145t/2101t	26.98m	3.45m	6.65m

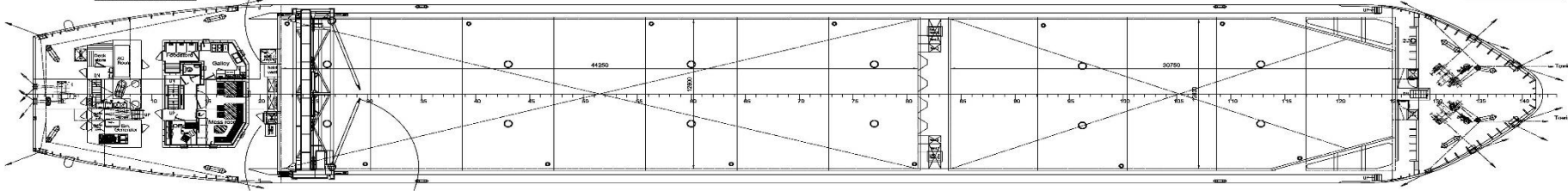
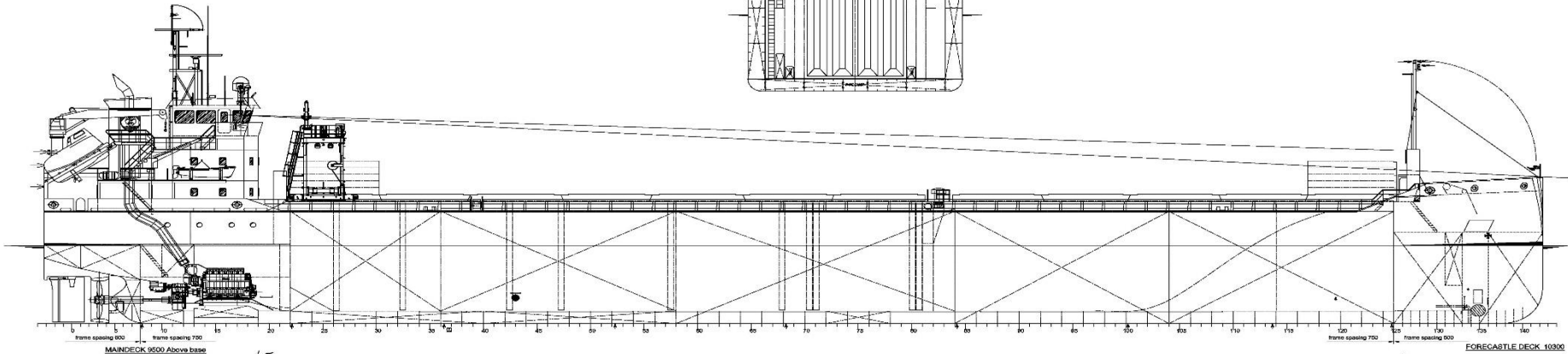
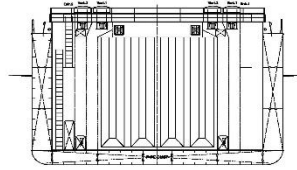
Hold 1/Hold 2 Grain & Bale m ³ /f ³	Hatch 1/Hatch 2	Parallel Hold	Max Load Hatch Top
Hold 1: 3594.3m³/126932.00ft³ Hold 2: 5188.8m³/183242.00ft³	33m x 12.6m x 9.296m 44.25m x 12.6m x 9.296m	24.5m x 12.6m x 9.296m 41.25m x 12.6m x 9.296m	2.35mt/m³
Mechanical Ventilation	Max Load tank top	Bulkheads/Hatch Type	
6 changes/HR	15mt/m²	2 portable bulkheads/pontoon type hatches	

Other		
Co2 Fire Suppression in Cargo Holds	BWTS	Electric Bowthruster 300kW

Arklow Rambler

General Ship's Particulars

FRAME 81



CROSS SECTION

