

# Arklow Ranger

## General Ship's Particulars



Class Notation				
C✘ HULL ✘ MACH, General Cargo Ship, Heavy Cargo, Unrestricted Navigation ✘ AUT-UMS, Strength Bottom, Heavy Cargoes 147 kN/m <sup>2</sup> , MON-SHAFT, IWS				
Port of Registry	Yard	Year of Build	Class	P&I
<b>ARKLOW</b>	<b>Royal Bodewes</b>	<b>2024</b>	<b>RINA</b>	<b>NORTH OF ENGLAND</b>
Call Sign	IMO Number	Class Number	Official Number	
<b>EIA2572</b>	<b>9923243</b>	<b>100873</b>	<b>405109</b>	
Email	Contact Number	Sat Phone	MMSI	
<a href="mailto:aranger@arkship.ie">aranger@arkship.ie</a>	<b>+353 870570739</b>	<b>+881 677118670</b>	<b>250014107</b>	
Length OA	Length BP	Breadth Mid	TPC	
<b>104.93m</b>	<b>102.98</b>	<b>15.0m</b>	<b>14.6</b>	
Summer Load Draft	Summer Deadweight	Winter Load Draft	Winter Deadweight	
<b>6.612m</b>	<b>6885t</b>	<b>6.465m</b>	<b>6607t</b>	
GT/NT	Min air draft	Ballast draft	Min coaming ht above waterline(midship) in full ballast condition	
<b>4145t/2101t</b>	<b>26.98m</b>	<b>3.45m</b>	<b>6.65m</b>	

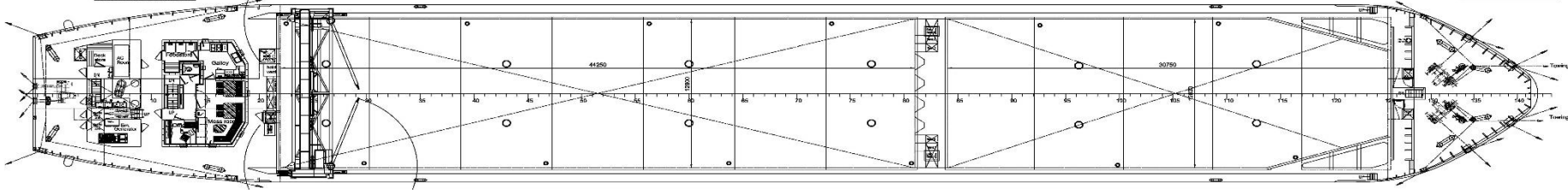
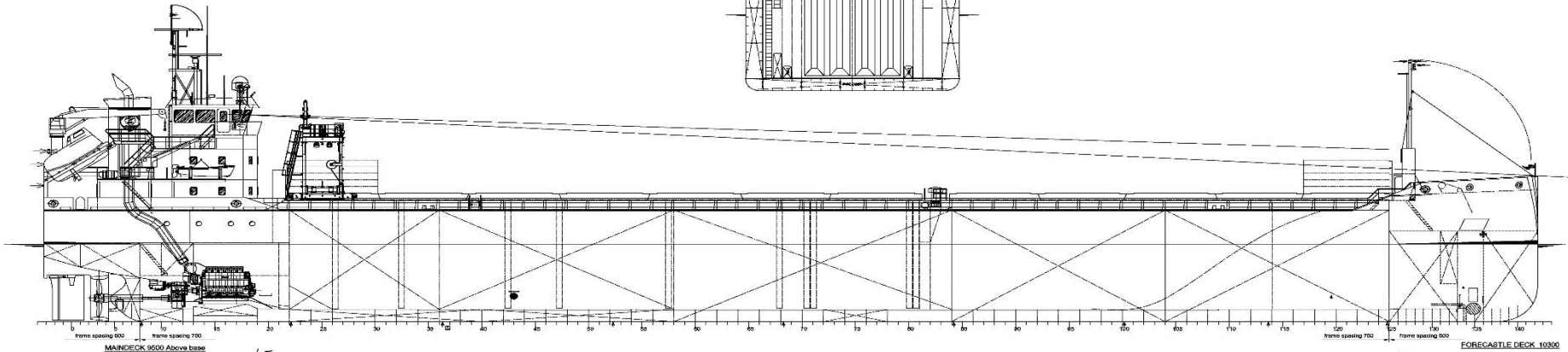
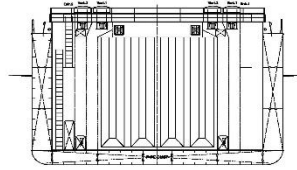
Hold 1/Hold 2 Grain & Bale m <sup>3</sup> /f <sup>3</sup>	Hatch 1/Hatch 2	Parallel Hold	Max Load Hatch Top
<b>Hold 1: 3594.3m<sup>3</sup>/126932.00ft<sup>3</sup></b> <b>Hold 2: 5188.8m<sup>3</sup>/183242.00ft<sup>3</sup></b>	<b>33m x 12.6m x 9.296m</b> <b>44.25m x 12.6m x 9.296m</b>	<b>24.5m x 12.6m x 9.296m</b> <b>41.25m x 12.6m x 9.296m</b>	<b>2.35mt/m<sup>3</sup></b>
Mechanical Ventilation	Max Load tank top	Bulkheads/Hatch Type	
<b>6 changes/HR</b>	<b>15mt/m<sup>2</sup></b>	<b>2 portable bulkheads/pontoon type hatches</b>	

Other		
Co2 Fire Suppression in Cargo Holds	BWTS	Electric Bowthrustrer 300kW

# Arklow Ranger

## General Ship's Particulars

FRAME 81



CROSS SECTION

