

Arklow Rose

General Ship's Particulars



Class Notation				
C✘ HULL ✘ MACH, General Cargo Ship, Heavy Cargo, Unrestricted Navigation ✘ AUT-UMS, Strength Bottom, Heavy Cargoes 147 kN/m ² , MON-SHAFT, IWS				
Port of Registry	Yard	Year of Build	Class	P&I
ARKLOW	Royal Bodewes	2024	RINA	NORTH STANDARD
Call Sign	IMO Number	Class Number	Official Number	
EIA2658	9923267	100875	405111	
Email	Contact Number	Sat Phone	MMSI	
arose@arkship.ie	+353 872075655	+881 16777133942	250014193	
Length OA	Length BP	Breadth Mid	TPC	
104.93m	102.98	15.0m	14.6	
Summer Load Draft	Summer Deadweight	Winter Load Draft	Winter Deadweight	
6.612 m	6,850 mt	6.474 m	6,650 mt	
GT/NT	Min air draft	Ballast draft	Min coaming ht above waterline(midship) in full ballast condition	
4145t/2101t	23.0m	3.45m	7.6m	

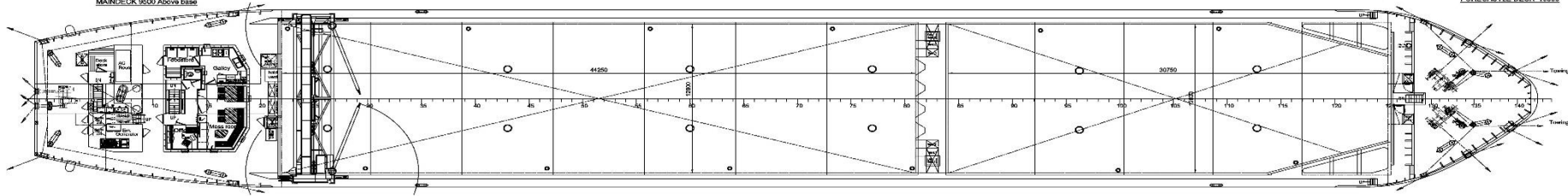
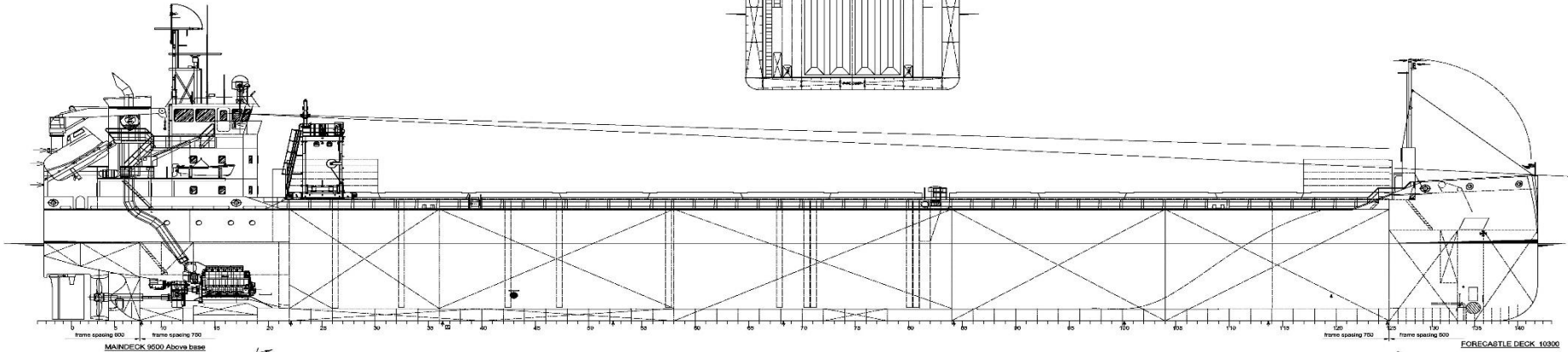
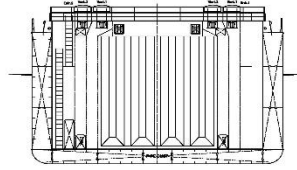
Hold 1/Hold 2 Grain & Bale m ³ /ft ³	Hatch 1/Hatch 2	Parallel Hold	Max Load Hatch Top
Hold 1: 3594.3m³/126932.00ft³ Hold 2: 5188.8m³/183242.00ft³	33m x 12.6m x 9.296m 44.25m x 12.6m x 9.296m	24.5m x 12.6m x 9.296m 41.25m x 12.6m x 9.296m	2.35mt/m³
Mechanical Ventilation	Max Load tank top	Bulkheads/Hatch Type	
6 changes/HR	15mt/m²	2 portable bulkheads/pontoon type hatches	

Other			
Co2 Fire Suppression in Cargo Holds	BWTS	ER fitted with Co2 & Flexi Fog	Electric Bowthruster 300KW

Arklow Rose

General Ship's Particulars

FRAME 61



CROSS SECTION

