

Arklow Spray

General Ship's Particulars



Class Notation:

I, Hull Mach, Unrestricted navigation, Bulk Carrier CSR CPS (WBT), BC-A (Holds 2+4 may be empty, ESP, Grab (20), AUT-UMS, MON-SHAFT, ALP, INWATER SURVEY, CLEANSHIP

| | | | | |
|--|--|-------------------------|-----------------------|-------------------------|
| Port of Registry | Yard | Year of Build | Class | P&I |
| ARKLOW | Daesun Shipbuilding & Engineering | 2014 | BUREAU VERITAS | NORTH OF ENGLAND |
| Call Sign | IMO Number | Class Number | | Official Number |
| EI-OG-8 | 9649548 | 21950L | | 404745 |
| Email | Contact Number | Sat Phone | MMSI | |
| ASPRAY@ARKSHIP.IE | +353 87 988 9786 | +87 077 324 1541 | 250002903 | |

| | | | |
|----------------------------|-----------------------|----------------------|--------------------------------|
| Length OA | Length BP | Breadth Mid | TPC |
| 182.00m | 177.52m | 30.00m | 49.4t |
| Summer Load Draft | Summer Deadweight | Winter Load Draft | Winter Deadweight |
| 10.00m | 34,905t | 9.798m | 33,905t |
| GT/NT | Min air draft | At max Ballast draft | Min coaming ht above waterline |
| 22,868t/11,648t | 36.7m | 6.3m | 10.7m |
| Ballast excl/incl hold(#3) | Ballast rate p/h (x2) | IFO380/MGO @ 90% | Fresh water |
| 13,425t/ 23,374t | 800m3/hr | 1140t/170t | 230t |

| Hold Capacities | No.1 Hold | No. 2 Hold | No.3 Hold | No.4 Hold | No. 5 Hold | Total |
|--|------------------------|---------------|------------------------|-----------|------------|------------------|
| Grain M ³ | 7587.3 | 10056.3 | 9706.7 | 10070.7 | 9529.9 | 46951.0 |
| Grain Ft ³ | 267930.3 | 355118.1 | 342772.6 | 355626.6 | 336529.4 | 1657980.6 |
| Bale M ³ | 7103.1 | 9648.47 | 9334.8 | 9661.4 | 9209.7 | 44957.5 |
| Bale Ft ³ | 250831.8 | 340716.4 | 329639.8 | 341173.0 | 325222.1 | 1587484.2 |
| Hatch Dimensions | 15.2m x 14.8m | 20.0m x 20.4m | | | | |
| Hatch Type | Macgregor Folding type | Cranes | 4 x MacGregor Electric | | | |
| All holds are appendix B fitted. Mechanical ventilation-6 changes/hr. Maximum load on tank top: 25t/m² | | | | | | |

Speed and Consumption per day (w.o.g)

Not Scrubber fitted
Max 0.5% sulphur content

| | | | |
|----------------|-------------------------------------|--------------------------------------|--------------------------------------|
| Ballast | Abt. 11.0kts on abt. 15t IFO380/MGO | Abt. 12.5kts on abt. 18t IFO 380/MGO | Abt.14.0kts on abt. 23t IFO 380/MGO |
| Laden | Abt. 11.0kts on abt. 17t IFO380/MGO | Abt. 12.5kts on abt. 19t IFO 380/MGO | Abt. 14.0kts on abt. 24t IFO 380/MGO |
| In Port (Idle) | 3t MDO/IFO | In port with cranes | 4.0t MDO/IFO |

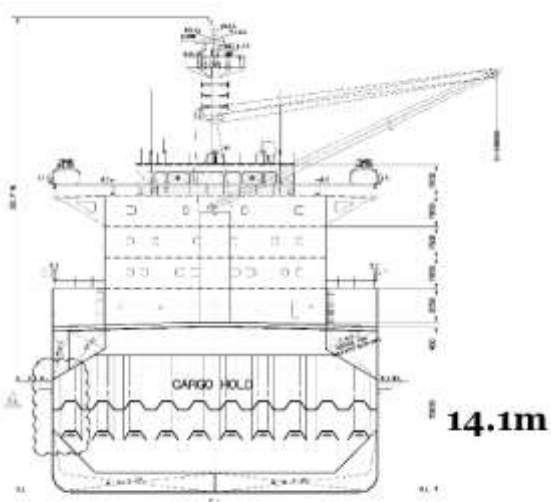
Other

| | | | |
|-------------------------------------|------------|---------------------------|------|
| Co2 Fire Suppression in Cargo Holds | Mewis Duct | Australian Ladders Fitted | BWTS |
|-------------------------------------|------------|---------------------------|------|

Arklow Spray

General Ship's Particulars

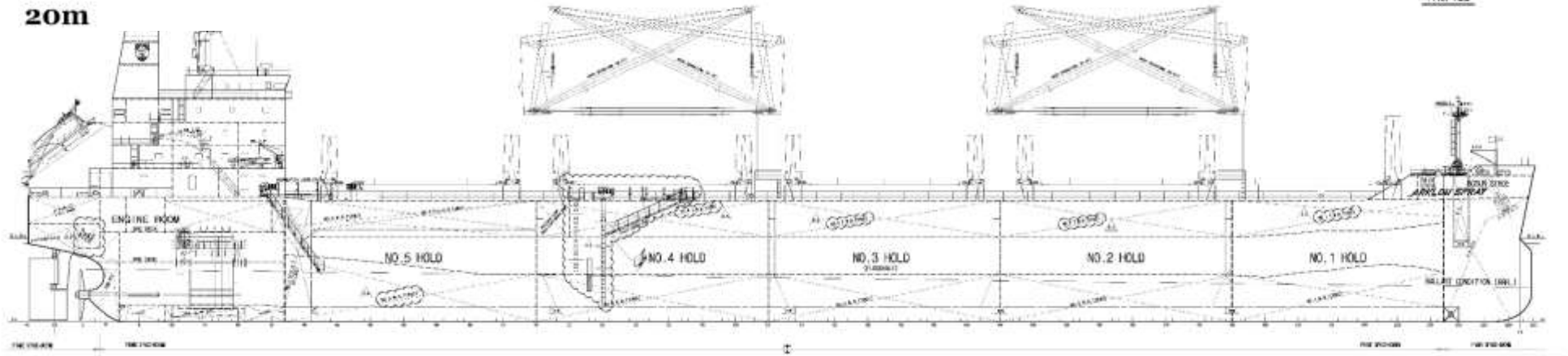
Min Crane Outreach: 4m
Max Crane Outreach: 26m



14.1m

MIDSHIP

20m



PROFILE

