

M.V. Arklow Vale



Port of Registry	Rotterdam, The Netherlands	Yard	Royal Bodewes Shipyard
Call Sign	PCZV	Year of Build	2015
IMO No.	9772527	Class	Bureau Veritas
MMSI No	244750645	Class	Class 1, Hull, Mach,
		Notation	AUT-UMS, IWS, Strength bottom, Heavy Cargo, General Cargo
Inmarsat-C (telex)	424401224 424401225	Class No.	27825W
Email	avale@ipsignature3.net	Official No.	24154 Z 2015
GSM telephone (Dutch)	+31652021861		



Principal Particulars

Length OA	86.93m
Length BP/Load line	84.98/82,84m
Breadth	15.00m
Depth	7.17m
Summer Load Draft (m)	6.35m
Min. airdraft is	18.25m
at max. summer draft of	6.35m
Min. coaming ht above WL	3.39m
GT	2999t
NT	1731t
Displacement	t
Total Deadweight	5100t
Ballast	1870m ³
Fuel – HFO	109m ³
Fuel – GO	95m ³
Fresh Water	32m ³
Lub Oil	11m ³

Hold Capacities Grain & Bale	m³	ft³
	hold	6.258
Portable bulkhead may be placed in 8 positions for cargo separation and storage position		

Hatches: Coops & Nieborg pontoon system		
Maximum hatch top loading	1.75t/m ²	
Maximum tank top loading	15mt/m ²	

Bottom strengthened for loading aground
Tank top strengthened for heavy cargoes

CO₂ fire extinguishing system in hold
Engine room fitted with CO₂ and LAFF
Certified for the carriage of dangerous goods of IMO Class 1.4, 2.1, 2.2, 2.3, 3, 4.1, 4.2, 5.1, 6.1, 8 and 9

Main Engine:
MaK 6M25 1740 kW with Siemens Gearbox and Berg controllable pitch propeller

Auxiliaries:
2 x Sisu Diesel 154kW 1500 rpm

Generators:
2 x Aux generator 154kW
1 x Emergency Generator 66kW

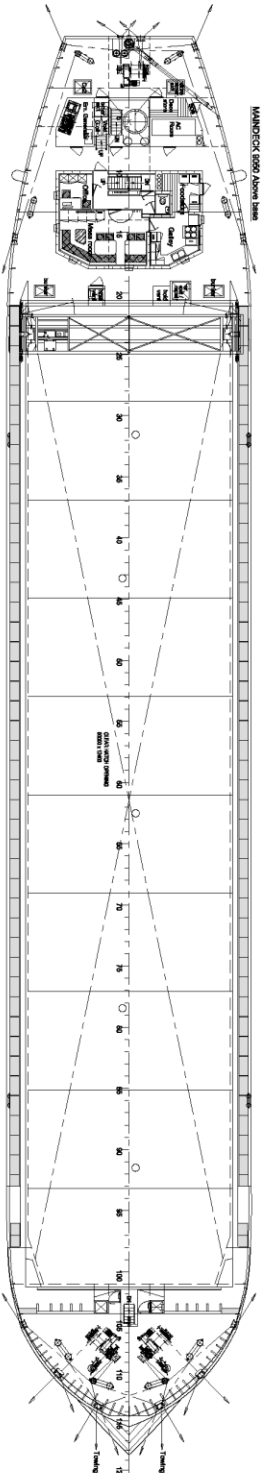
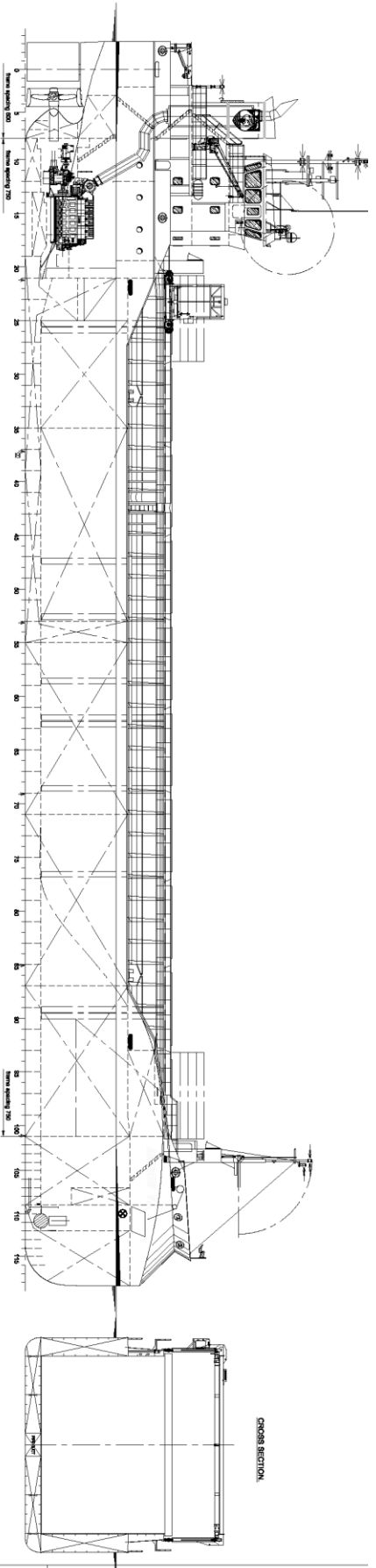
1 x shaft alternator 348kW

Speed: abt. 12.5 knots

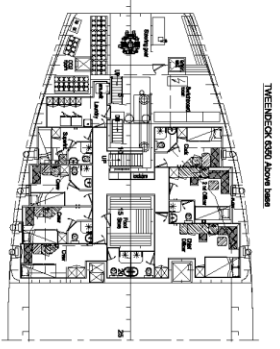
Consumption:
In port – abt. 0,5 t Gas Oil per day
At sea – abt. 7 t HFO per day

Equipment
GMDSS (A3), 2x radars, navtex,
Echo sounder, speed/distance log
2x GPS receivers, A/P, ECDIS,
gyro/magnetic compasses,
1x electric bowthruster 300 kW

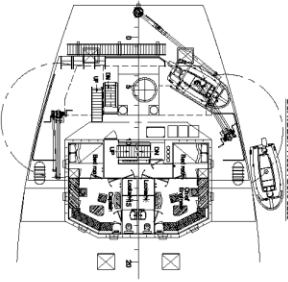
M.V. ARKLOW VALE



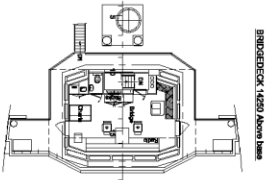
DECK 1180 Above Baseline



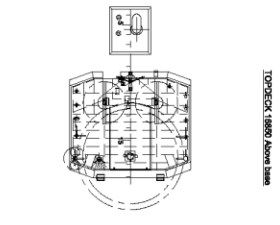
TWENTYDECK 6180 Above Baseline



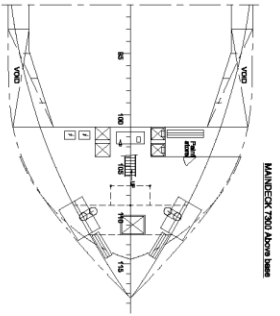
BOATDECK 1180 Above Baseline



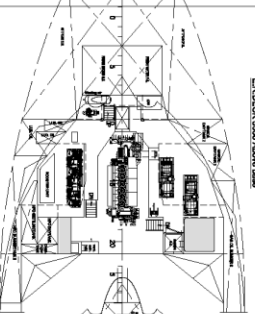
EIGHTDECK 1490 Above Baseline



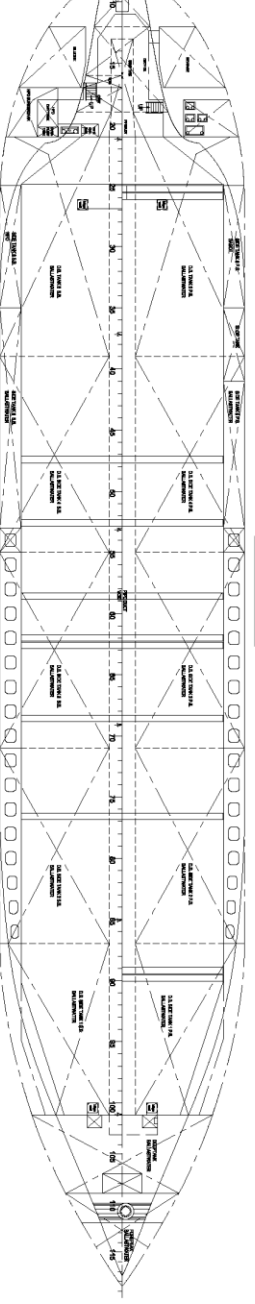
TOPDECK 1690 Above Baseline



MANDECK 790 Above Baseline



E.A. DECK 990 Above Baseline



TANKTOP 1100 Above Baseline

MAIN PARTICULARS

Length over all	88.00 m.
Length between perpendiculars	67.240 m.
Beam	14.00 m.
Depth moulded	7.17 m.
Depth to top of keel	8.16 m.
Depth to bottom of keel	8.100 m.
* Net capacity	291,000 cwt.
Tonnage (gross, net, 198)	2999 GT
Tank capacity: H ₂ O	841,109 m ³
Oil	521,073 m ³
Gas	1,070 m ³
Ballastwater	817,012 m ³
Main Engine Make	MAN B&W
HP	7120 kW
Tidal Speed	12.8 kts

* Dimensions not to scale

14-04-2015

BOVES
 Technical Services
 77-000-001 / F
 70