

M.V. Arklow Valour



Port of Registry	Rotterdam, The Netherlands	Yard	Royal Bodewes Shipyard
Call Sign	PCFP	Year of Build	2017
IMO No.	9772565	Class	Bureau Veritas
MMSI No	244020335	Class	Class 1, Hull, Mach,
		Notation	AUT-UMS, IWS, Strength bottom, Heavy Cargo, General Cargo
Inmarsat-C (telex)	424401460 424401461	Class No.	27829B
Email	valour@arklowships.nl	Official No.	24417 Z 2017
Mobile phone	+31 654905580		
VSAT phone	+31 85 666 1246		



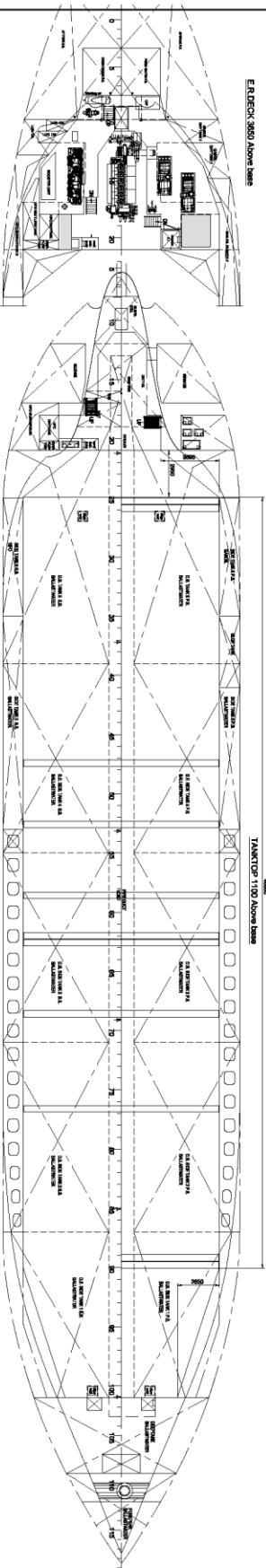
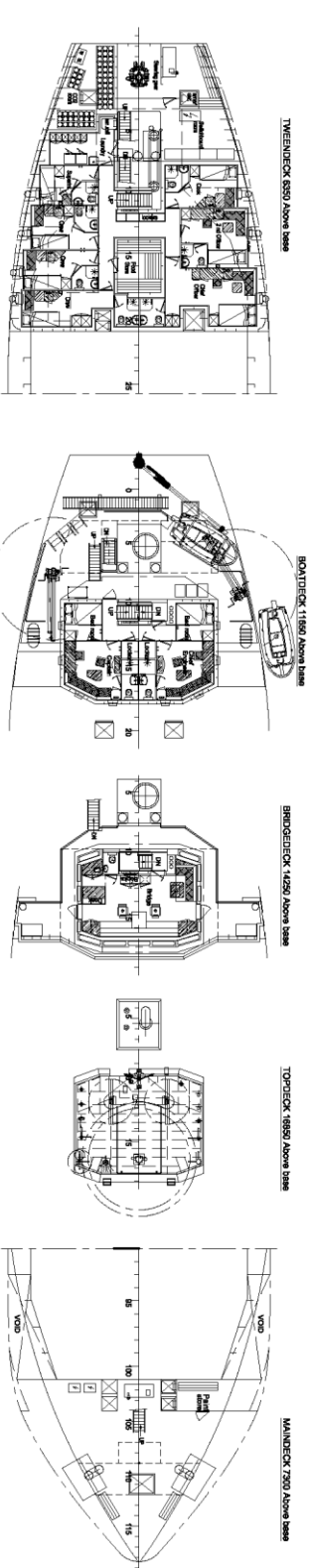
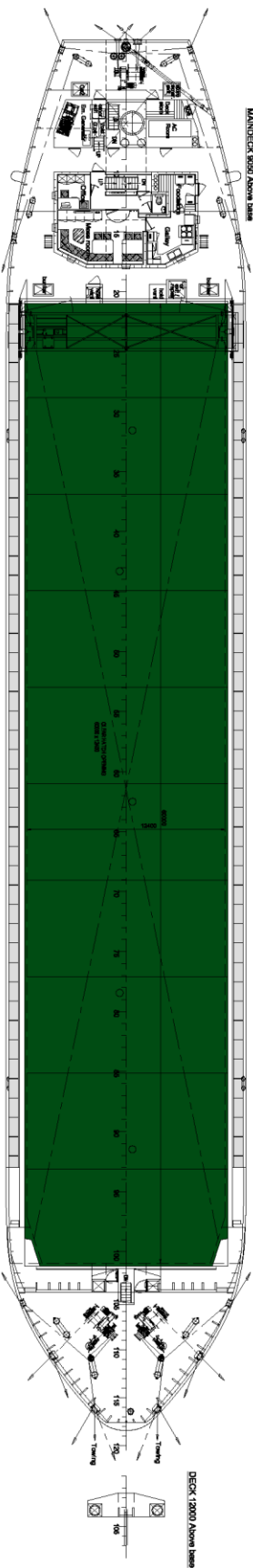
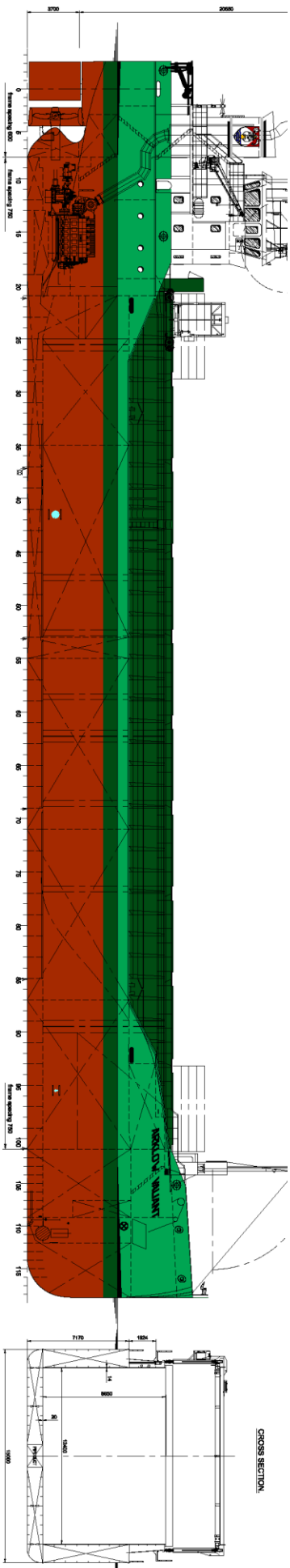
Principal Particulars

Length OA	86.93m
Length BP/ Load line	84.98/84.98m
Breadth	15.00m
Depth	7.17m
Summer Load Draft (m)	6.35m
Min. airdraft is	18.25m
at max. summer draft of	6.35m
Min. coaming ht above WL	3.39m
GT	2999t
NT	1731t
Total Deadweight	5170t
Ballast	1870m ³
Fuel – HFO	109m ³
Fuel – GO	95m ³
Fresh Water	32m ³
Lub Oil	11m ³

Hold Capacities	Grain & Bale	
		m³
		ft³
hold	6.258	221.000
Portable bulkhead may be placed in 8 positions for cargo separation and storage position		
Hatches: Coops & Nieborg pontoon system		
Maximum hatch top loading		1.75t/m ²
Maximum tank top loading		15mt/m ²
Bottom strengthened for loading aground Tank top strengthened for heavy cargoes		
CO ₂ fire extinguishing system in hold		
Engine room fitted with CO ₂ and LAFF		
Certified for the carriage of dangerous goods of IMO Class 1.4, 2.1, 2.2, 2.3, 3, 4.1, 4.2, 5.1, 6.1, 8 and 9		

Main Engine:	MaK 6M25 1740 kW with Siemens Gearbox and Berg controllable pitch propeller
Auxiliaries:	2 x Sisu Diesel 154kW 1500 rpm
Generators:	2 x Aux generator 154kW 1 x Emergency Generator 66kW 1 x shaft alternator 348kW
Speed:	abt. 12.5 knots
Consumption:	In port – abt. 0,5 t Gas Oil per day At sea – abt. 7 t HFO per day
Equipment	GMDSS (A3), 2x radars, navtex, Echo sounder, speed/distance log 2x GPS receivers, A/P, ECDIS, gyro/magnetic compasses, 1x electric bowthrustrer 300 kW

M.V. ARKLOW VALALOUR



MAIN PARTICULARS

Length over all	86.83 m
Length between perpendiculars	64.80 m
Length incl. bowsprit	64.80 m
Length incl. stern	71.15 m
Depth	7.15 m
Design draught	act. 8.35 m
Displacement	act. 5100 t/m
* Hold capacity	221 000 cdt
Tanktop area	696 m ²
Tonnage (act. conv. 1983)	2999 GT
Tank capacities - H ₂ O	act. 109 m ³
Gas oil	act. 50 m ³
Ballastwater	act. 1870 m ³
Main Engine - MAN B&W	1740 kW
Twin Screw	act. 12.8 kts

* - Cargo hold built in on board

21-09-2016

BODEWES

 General Arrangement S100 Draw

 723 000 001 / 0

 21-09-2016