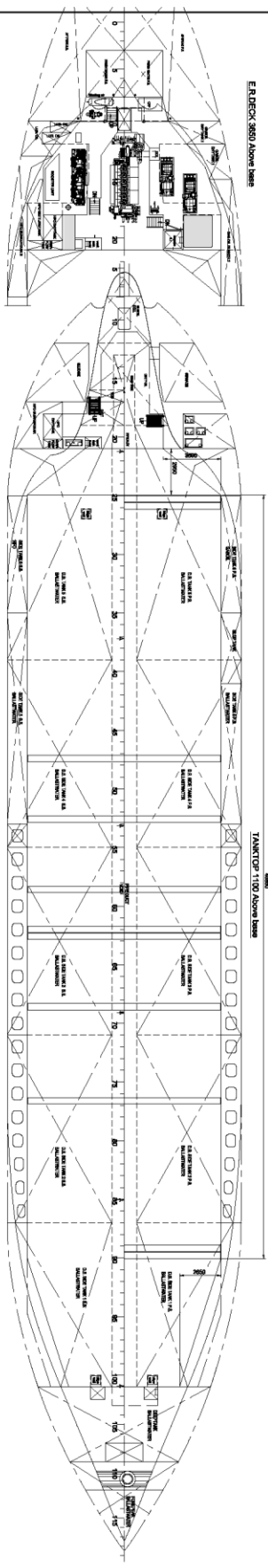
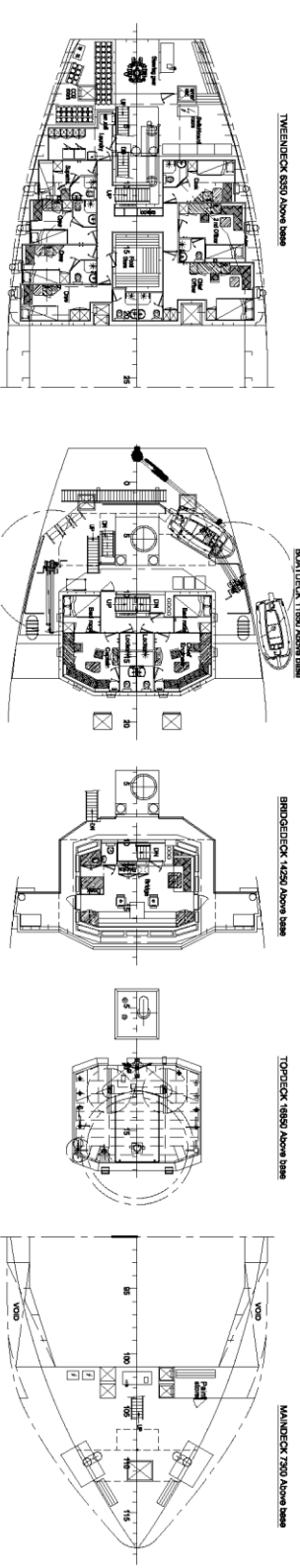
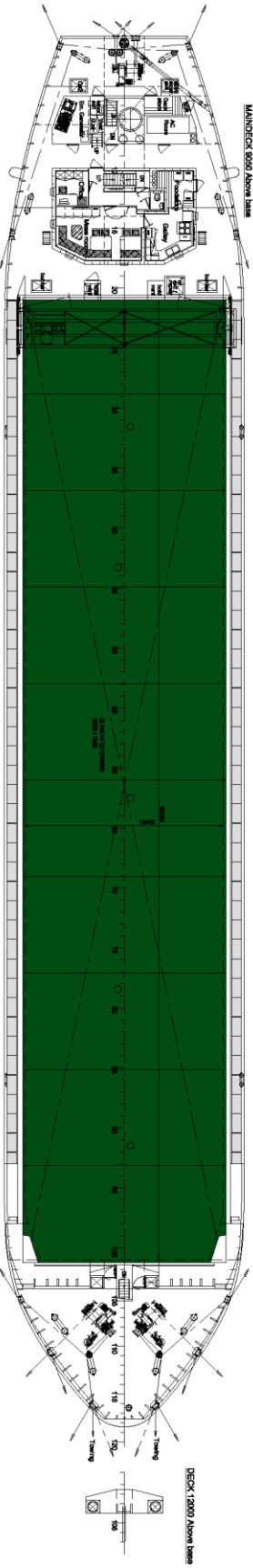
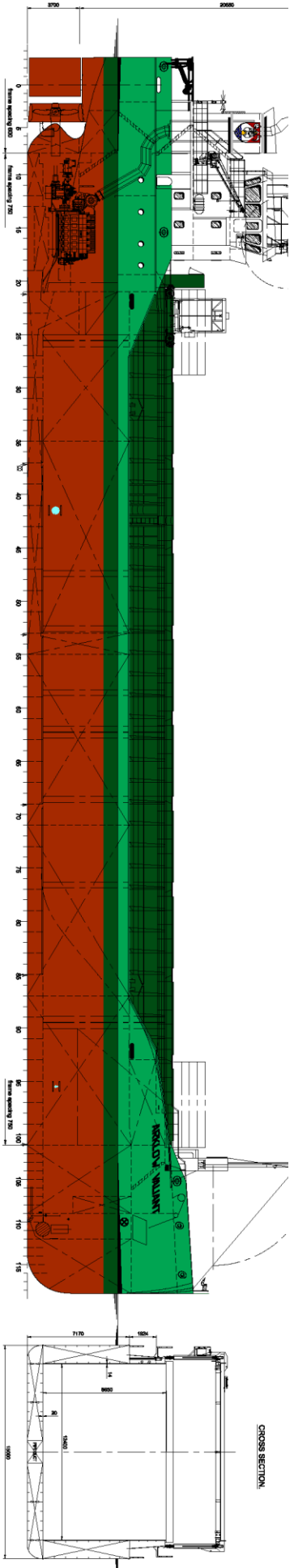


# M.V. ARKLOW VENUS



**MAIN PARTICULARS**

Length over all	86.83 m.
Length between perpendiculars	64.80 m.
Length incl. bowthruster	64.80 m.
Length incl. stern thruster	71.15 m.
Draught	7.15 m.
Design draught	del. 8.35 m.
Displacement	del. 5100 t/m
* Hold capacity	221 000 cdt.
Tanktop area	696 m <sup>2</sup>
Tonnage (incl. crew/168)	2999 GT
Tank capacities - H <sub>2</sub> O	del. 109 m <sup>3</sup>
Oil	del. 56 m <sup>3</sup>
Gas	del. 1870 m <sup>3</sup>
Main Engine - MAN B&W	1740 kW
Twin Screw	del. 12.8 kts
* - Check dimensions on board	

**BODEWES**

General Arrangement 5100 DWT

21-08-2016

723 000 001 10