

M.V. Arklow View



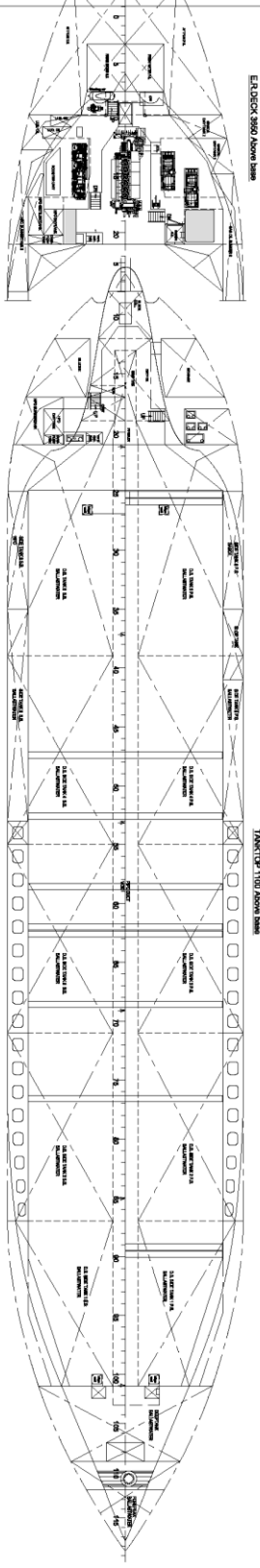
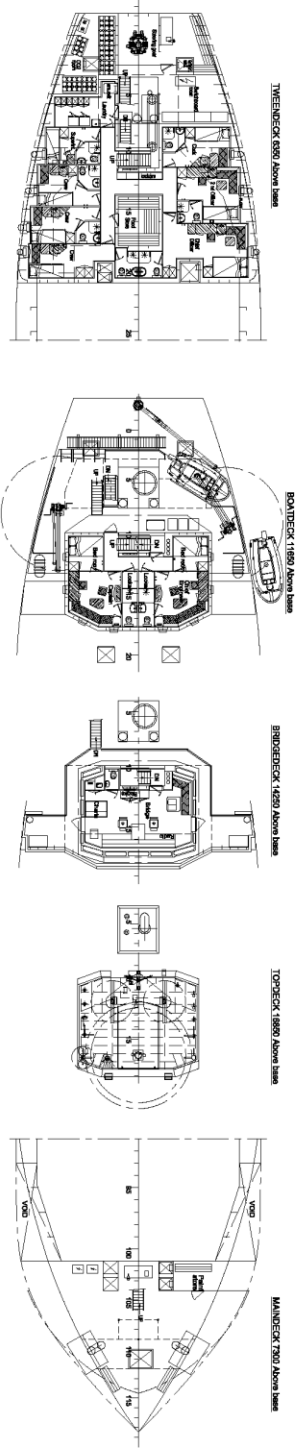
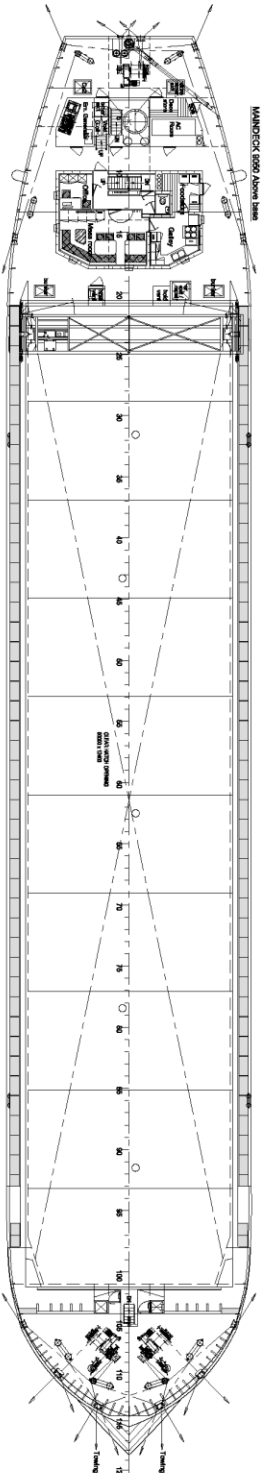
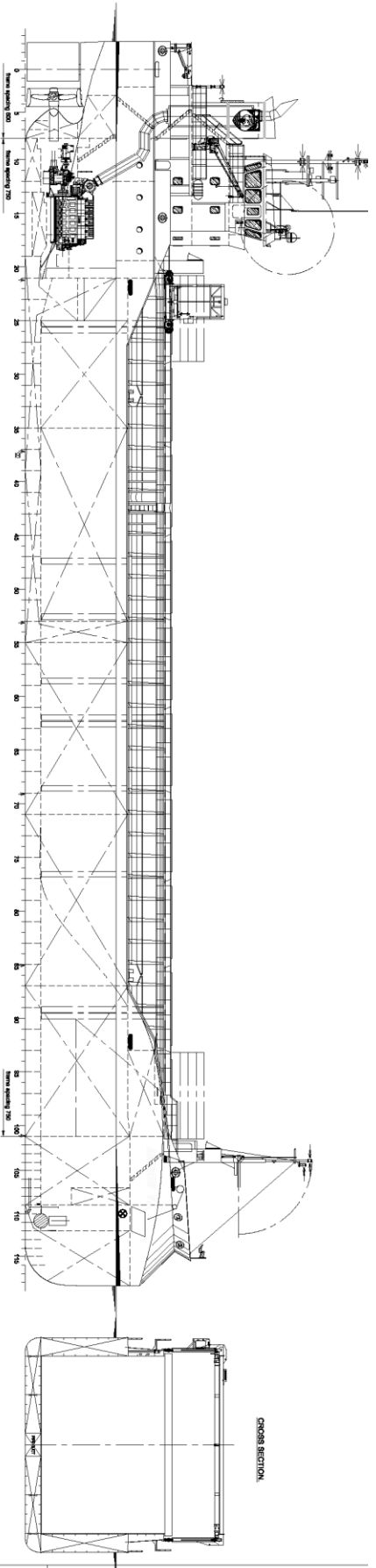
| | | | |
|-----------------------|----------------------------|---------------|----------------------------|
| Port of Registry | Rotterdam, The Netherlands | Yard | Royal Bodewes Shipyard |
| Call Sign | PDDU | Year of Build | 2016 |
| IMO No. | 9772539 | Class | Bureau Veritas |
| MMSI No | 244870189 | Class | Class 1, Hull, Mach, |
| | | Notation | AUT-UMS, IWS, |
| Inmarsat-C (telex) | 424401278 | | Strength bottom, |
| | 424401279 | | Heavy Cargo, General Cargo |
| Email | view@arklowships.nl | Class No. | 27826X |
| GSM telephone (Dutch) | +31646277434 | Official No. | 24227 Z 2016 |



Principal Particulars

| | | | | | |
|--------------------------|--------------------|---|--|---------------------------------|---|
| Length OA | 86.93m | Hold Capacities Grain & Bale | | Main Engine: | MaK 6M25 1740 kW with Siemens Gearbox and Berg controllable pitch propeller |
| Length BP/ Load line | 84.98/82.84m | | m³ ft³ | Auxiliaries: | 2 x Sisu Diesel 154kW 1500 rpm |
| Breadth | 15.00m | hold | 6.258 221.000 | Generators: | 2 x Aux generator 154kW |
| Depth | 7.17m | Portable bulkhead may be placed in 8 positions for cargo separation and storage position | | 1 x Emergency Generator 66kW | 1 x shaft alternator 348kW |
| Summer Load Draft (m) | 6.35m | | | Speed: abt. 12.5 knots | |
| Min. airdraft is | 18.25m | Hatches: Coops & Nieborg pontoon system | | Consumption: | In port – abt. 0,5 t Gas Oil per day |
| at max. summer draft of | 6.35m | Maximum hatch top loading | 1.75t/m ² | At sea – abt. 7 t HFO per day | |
| Min. coaming ht above WL | 3.39m | Maximum tank top loading | 15mt/m ² | Equipment | GMDSS (A3), 2x radars, navtex, Echo sounder, speed/distance log |
| GT | 2999t | Bottom strengthened for loading aground | | 2x GPS receivers, A/P, ECDIS, | gyro/magnetic compasses, |
| NT | 1731t | Tank top strengthened for heavy cargoes | | 1x electric bowthruuster 300 kW | |
| Displacement | 6541t | CO ₂ fire extinguishing system in hold | | | |
| Total Deadweight | 5170t | Engine room fitted with CO ₂ and LAFF | | | |
| Ballast | 1870m ³ | Certified for the carriage of dangerous goods of IMO Class 1.4, 2.1, 2.2, 2.3, 3, 4.1, 4.2, 5.1,6.1,8 and 9 | | | |
| Fuel – HFO | 109m ³ | | | | |
| Fuel – GO | 95m ³ | | | | |
| Fresh Water | 32m ³ | | | | |
| Lub Oil | 11m ³ | | | | |

M.V. ARKLOW VIEW



MAIN PARTICULARS

Length over all 88.00 m.
 Length between perpendiculars 62.240 m.
 Breadth 14.00 m.
 Depth 7.17 m.
 Draught forward 4.6 m.
 Draught aft 5.00 m.
 * Fuel capacity 291,000 cdt.
 * Fresh water capacity 25000 GT.
 Tank capacity: 11700 cdt.
 Tank contents: 11700 cdt.
 * Main Engine: MAN B&W 1740 kW.
 * Tail Speed: 12.8 kts.
 * Construction: see on sheet

14-04-2015

BOVES
 Technical Services
 771-000-001 / F
 70