

M.V. Arklow Viking



Port of Registry	Rotterdam, The Netherlands	Yard	Royal Bodewes Shipyard
Call Sign	PCTZ	Year of Build	2018
IMO No.	9772606	Class	Bureau Veritas
MMSI No	244150648	Class	Class 1, Hull, Mach,
		Notation	AUT-UMS, IWS, Strength bottom,
Inmarsat-C (telex)	424401783 424401784		Heavy Cargo, General Cargo
Email	viking@arklowships.nl	Class No.	28806N
Mobile phone	+31 655696081	Official No.	24745 Z 2018
VSAT phone	+31 856661290		



Principal Particulars

Length OA	86.93m
Length	84.98/84.98m
Breadth	15.00m
Depth	7.17m
Summer Load Draft (m)	6.35m
Min. airdraft is	18.25m
at max. summer draft of	6.35m
Min. coaming ht above WL	3.39m
GT	2999t
NT	1731t
Total Deadweight	5170t
Ballast	1870m ³
Fuel – HFO	109m ³
Fuel – GO	95m ³
Fresh Water	32m ³
Lub Oil	11m ³

Hold Capacities	Grain & Bale	
	m³	ft³
hold	6.258	221.000

Portable bulkhead may be placed in 8 positions for cargo separation and storage position

Hatches:	Coops & Nieborg pontoon system	
Maximum hatch top loading	1.75t/m ²	
Maximum tank top loading	15mt/m ²	

Bottom strengthened for loading aground
Tank top strengthened for heavy cargoes

CO₂ fire extinguishing system in hold
Engine room fitted with CO₂ and LAFF
Certified for the carriage of dangerous goods of IMO Class 1.4, 2.1, 2.2, 2.3, 3, 4.1, 4.2, 5.1, 6.1, 8 and 9

Main Engine:

MaK 6M25 1740 kW with Siemens Gearbox and CAT propulsion controllable pitch propeller

Auxiliaries:

2 x SiSU Diesel 154kW 1500 rpm

Generators:

2 x Aux generator 154kW

1 x Emergency Generator 66kW

1 x shaft alternator 348kW

Speed: abt. 12.5 knots

Consumption:

In port – abt. 0,5 t Gas Oil per day

At sea – abt. 7 t HFO per day

Equipment

GMDSS (A3), 2x radars, navtex,

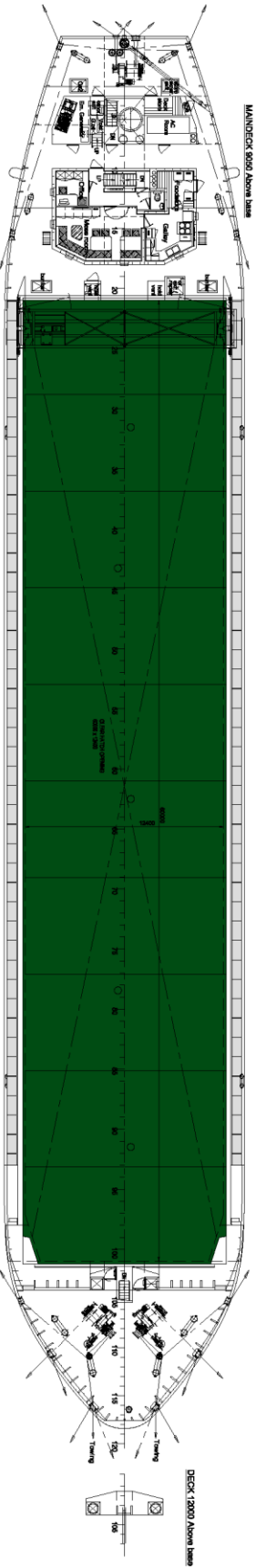
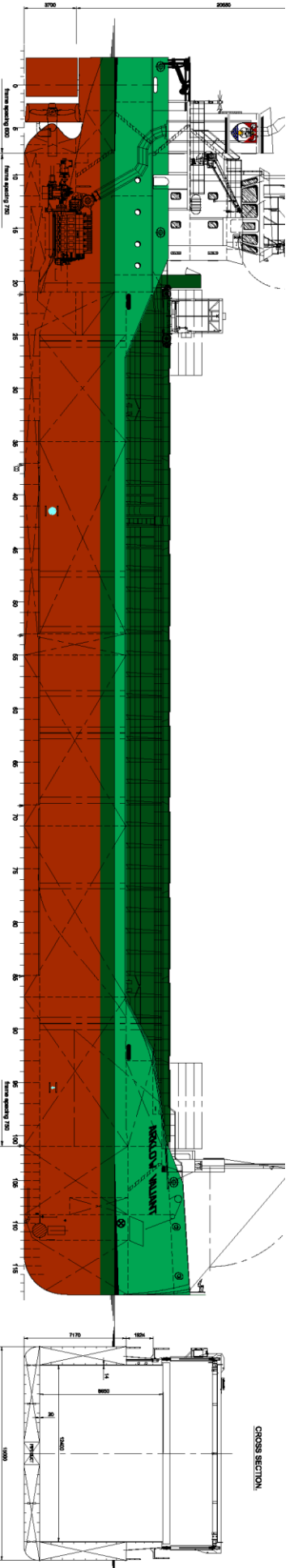
Echo sounder, speed/distance log

2x GPS receivers, A/P, ECDIS,

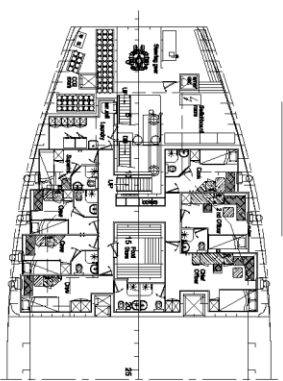
gyro/magnetic compasses,

1x electric bowthrustrer 300 kW

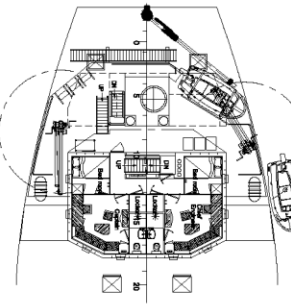
M.V. ARKLOW VIKING



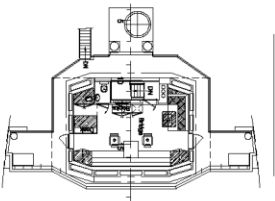
MAINDECK 8000 Above Baseline



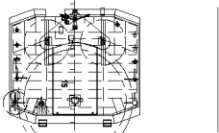
ROATDECK 1180 Above Baseline



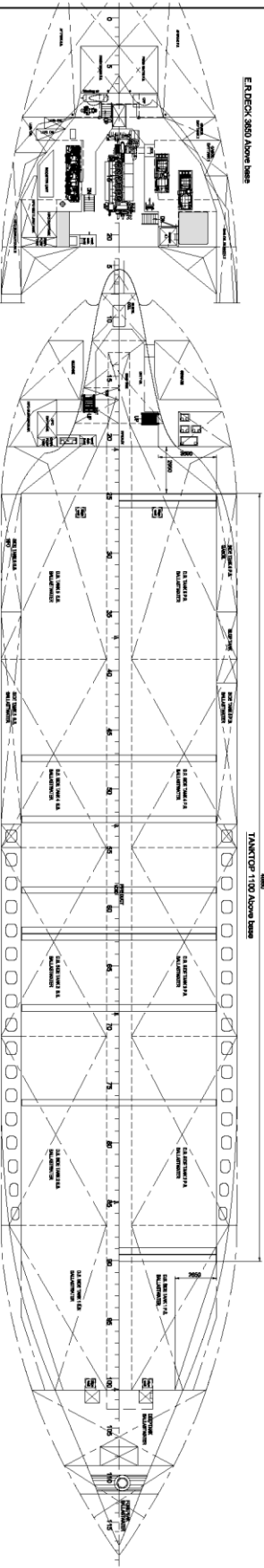
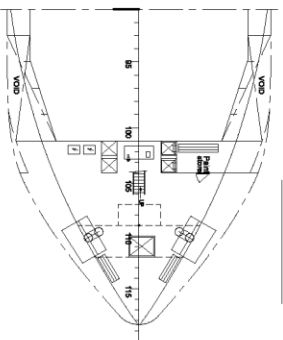
BRIDGEDECK 4250 Above Baseline



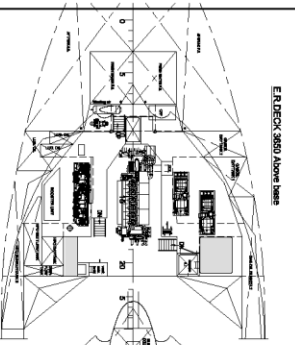
TOPDECK 1650 Above Baseline



MAINDECK 7200 Above Baseline



ER DECK 3650 Above Baseline



MAIN PARTICULARS

Length over all	86.83 m
Length between perpendiculars	64.80 m
Length incl. keelson	64.80 m
Length incl. keelson	64.80 m
Draft	7.15 m
Design draught	del. 8.35 m
Displacement	del. 5100 t/m
* Hold capacity	221 000 cdt
Tanktop area	696 m ²
Tonnage (net, conv./1983)	2999 GT
Tank capacities - H ₂ O	del. 109 m ³
Gas oil	del. 36 m ³
Ballastwater	del. 1870 m ³
Main Engine - Mark 60/24	1740 kW
Twin Screw	del. 12.8 kts
* - Consumption on 1800	

21-09-2016

BODEWES
 General Arrangement S100 DWL
 723 000 001 / 0
 21-09-2016