

M.V. Arklow Villa



| | | | |
|--------------------|----------------------------|---------------|-----------------------------------|
| Port of Registry | Rotterdam, The Netherlands | Yard | Royal Bodewes Shipyard |
| Call Sign | PCHO | Year of Build | 2018 |
| IMO No. | 9772618 | Class | Bureau Veritas |
| MMSI No | 244150690 | Class | Class 1, Hull, Mach, |
| | | Notation | AUT-UMS, IWS, Strength bottom, |
| Inmarsat-C (telex) | 424401826 424401827 | | Heavy Cargo, General Cargo |
| Email | villa@arklowships.nl | Class No. | 28807P |
| Mobile phone | +31 655796870 | Official No. | 24803 Z 2018 |
| VSAT phone | +31 856661293 | | |



Principal Particulars

| | |
|--------------------------|--------------------|
| Length OA | 86.93m |
| Length | 84.98/84.98m |
| Breadth | 15.00m |
| Depth | 7.17m |
| Summer Load Draft (m) | 6.35m |
| Min. airdraft is | 18.25m |
| at max. summer draft of | 6.35m |
| Min. coaming ht above WL | 3.39m |
| GT | 2999t |
| NT | 1731t |
| Total Deadweight | 5170t |
| Ballast | 1870m ³ |
| Fuel – HFO | 109m ³ |
| Fuel – GO | 95m ³ |
| Fresh Water | 32m ³ |
| Lub Oil | 11m ³ |

| | | |
|------------------------|----------------------|-----------------------|
| Hold Capacities | Grain & Bale | |
| | | |
| | m³ | ft³ |
| hold | 6.258 | 221.000 |

Portable bulkhead may be placed in 8 positions for cargo separation and storage position

| | |
|--|----------------------|
| Hatches: Coops & Nieborg pontoon system | |
| Maximum hatch top loading | 1.75t/m ² |
| Maximum tank top loading | 15mt/m ² |

Bottom strengthened for loading aground
Tank top strengthened for heavy cargoes

CO₂ fire extinguishing system in hold
Engine room fitted with CO₂ and LAFF
Certified for the carriage of dangerous goods of IMO Class 1.4, 2.1, 2.2, 2.3, 3, 4.1, 4.2, 5.1, 6.1, 8 and 9

Main Engine:

MaK 6M25 1740 kW with Siemens Gearbox and CAT propulsion controllable pitch propeller

Auxiliaries:

2 x SiSU Diesel 154kW 1500 rpm

Generators:

2 x Aux generator 154kW

1 x Emergency Generator 66kW

1 x shaft alternator 348kW

Speed: abt. 12.5 knots

Consumption:

In port – abt. 0,5 t Gas Oil per day

At sea – abt. 7 t HFO per day

Equipment

GMDSS (A3), 2x radars, navtex,

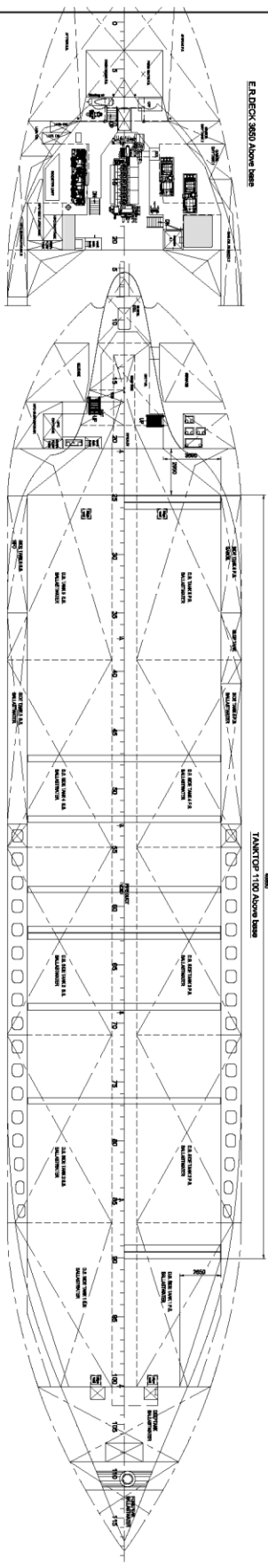
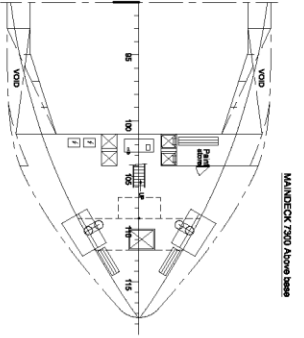
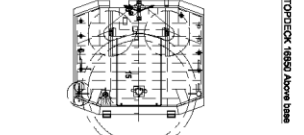
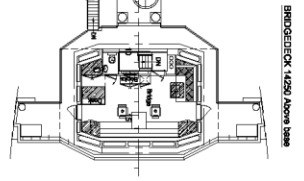
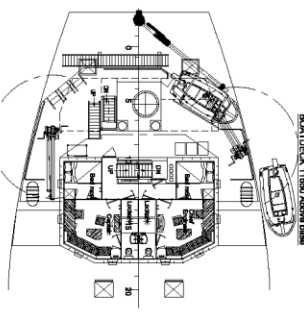
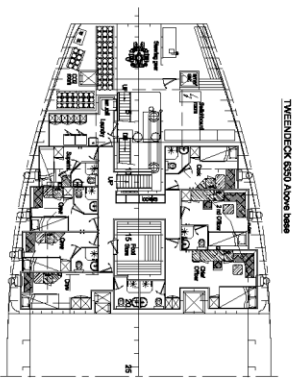
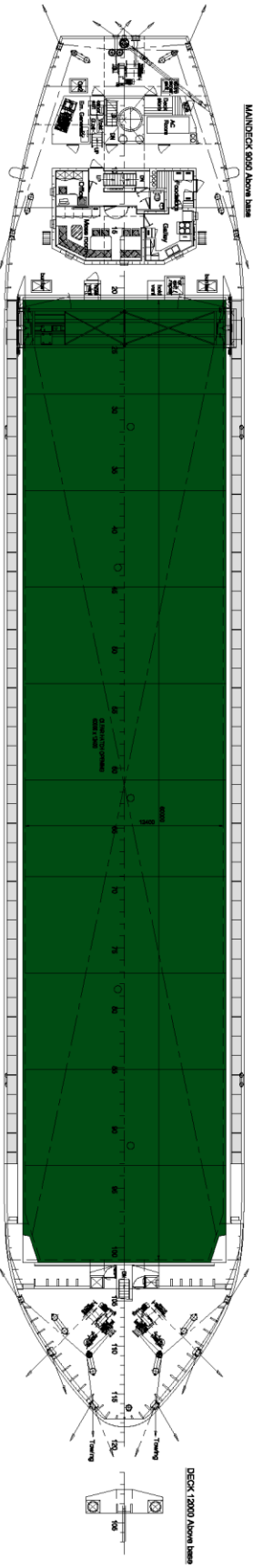
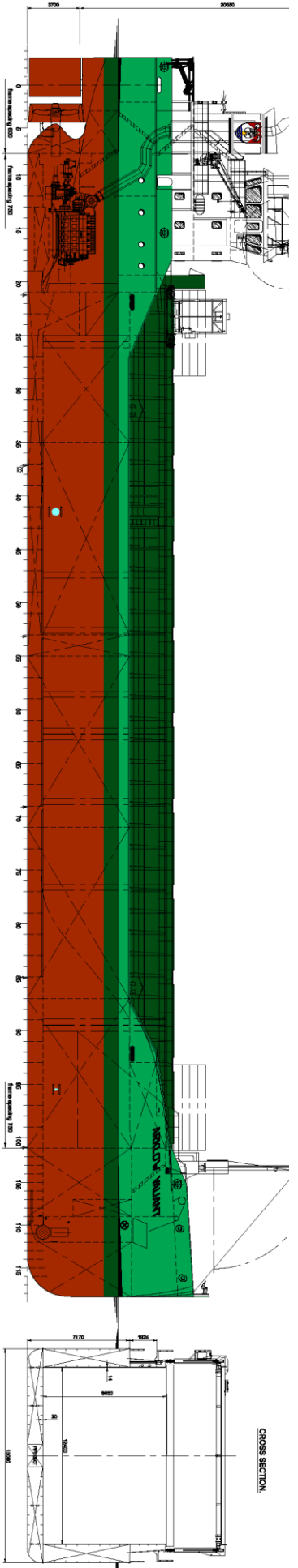
Echo sounder, speed/distance log

2x GPS receivers, A/P, ECDIS,

gyro/magnetic compasses,

1x electric bowthruster 300 kW

M.V. ARKLOW VILLA



MAIN PARTICULARS

| | |
|------------------------------------|--------------------------|
| Length over all | 86.83 m. |
| Length between perpendiculars | 64.80 m. |
| Length incl. bowthruster | 64.80 m. |
| Length incl. sternthruster | 71.15 m. |
| Depth | 7.15 m. |
| Design draught | del. 8.35 m. |
| Displacement | del. 5100 t/m |
| * Hold capacity | 221 000 cdt. |
| Tanktop area | 696 m ² |
| Tonnage (incl. crew/180) | 2999 GT |
| Tank capacities - H ₂ O | del. 109 m ³ |
| Gas oil | del. 36 m ³ |
| Ballastwater | del. 1870 m ³ |
| Main Engine - MAN B&W | 1740 kW |
| Twin Shaft | del. 12.8 kts |

* - Cargo hold built in on board

21-08-2016

BODEWES

General Arrangement S100 DWL

723-000-001 / 0

21-08-2016