

Arklow Willow

Port of Registry	Arklow	Yard	Ferus Smit 449
Call Sign	EIVV3	Year of Build	2019
Sat Phone	+353 402 44826	Class	Bureau Veritas (BV)
Email	awillow@arkship.ie	Class Notation	I, *Hull *Mach, Unrestricted navigation, General Cargo Ship, *AUT-UMS, MON-SHAFT, ALP, INWATER SURVEY, ICE class 1A (finnish/Swedish)
Inmarsat-C (Telex)	425000599@stratosmobile.com	Owner/Managers P & I Club	Arklow Shipping, North Quay, Arklow, County Wicklow North of England P & I
GSM telephone	+353 87 1457828	Class No.	31790G
		Official No.	405093
		IMO No.	9818955
		MMSI No.	250005692



Principal Particulars

Length OA	149.50m
Length BP	145.50m
Breadth Mld	19.25m
Depth Mld	12.00m
Summer Load Draft Mld	8.59m
Summer Deadweight	16791.4t
Winter Load Draft	8.41m
Winter Deadweight	16315.7t
GT	9999t
NT	5,155t
At mean ballast draft	4.7m
Min. airdraft	28.80m
min. coaming ht above waterline	8.80m
Ballast	6965m ³
Ballast Rate per Pump (x 2)	450m ³
Fuel (90%)	350m ³
Diesel (90%)	170m ³
Fresh Water	60m ³

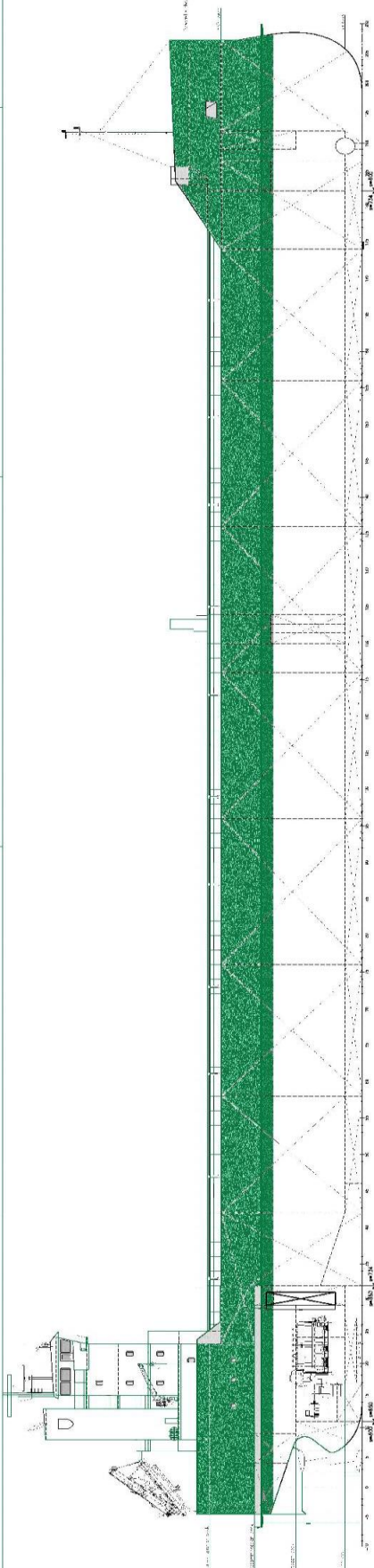
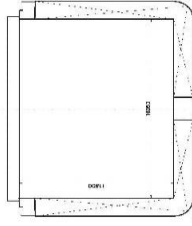
Hold Capacities	
	Grain
	m³ ft³
Hold 1	7540 266275
Hold 2	12176.7 430,020
Hatch Dimensions	
Hatch 1	42.0m x 16.05m x 11.8m
Hatch 2	64.0mx 16.05m x 11.8m
Mechanical Ventilation	
6 Changes/hr	
Max Load Tank top	
20t/m ²	
Bulkheads	2 Moveable with 9 positions
EQUIPMENT	
Reduction Gearbox	Keller
Pitch Propeller	Berg
Ballast Pumps	Azcue
Ballast pump with BWTS	Headway
HFO Fuel Pump	Kral
FO separator	Westfalia
Go Separator	Westfalia
LO system	Westfalia
Dehumidifier for Holds	

Detail	Maker	Output
Main Engine:	MAK 8m32C	MCR 3840kw
Auxiliaries:		
Shaft Generator	Yanmar	750kw
Diesel Generators	Yanmar	250kw, 400v 50hz
Harbour Emergency Generator	Yanmar	100kw , 400v , 50hz

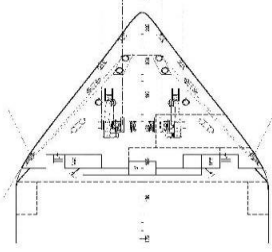
Speed & Consumption Ballast
abt 13.5kts on abt 17t IFO 380

*Please read above figures as MDO in
SECA Zones*

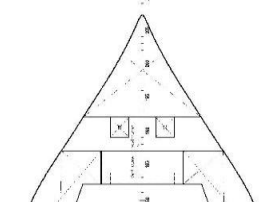
CROSS SECTION



FORECASTLE DECK



BRIDGE DECK



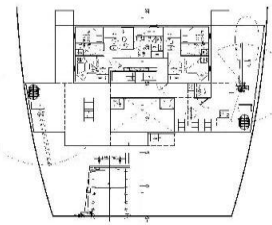
CAPTAINS DECK



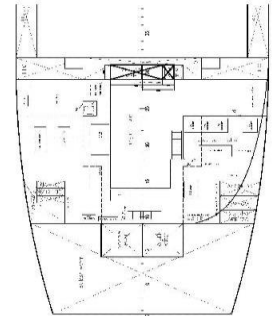
OFFICERS DECK



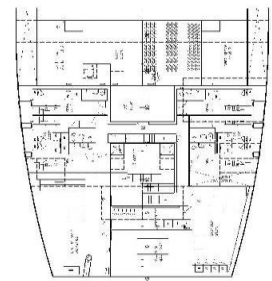
BOAT DECK



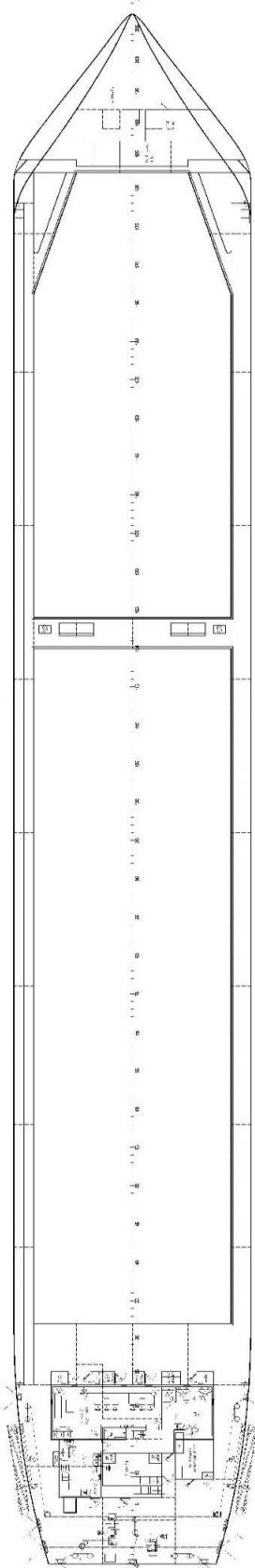
ENGINE ROOM



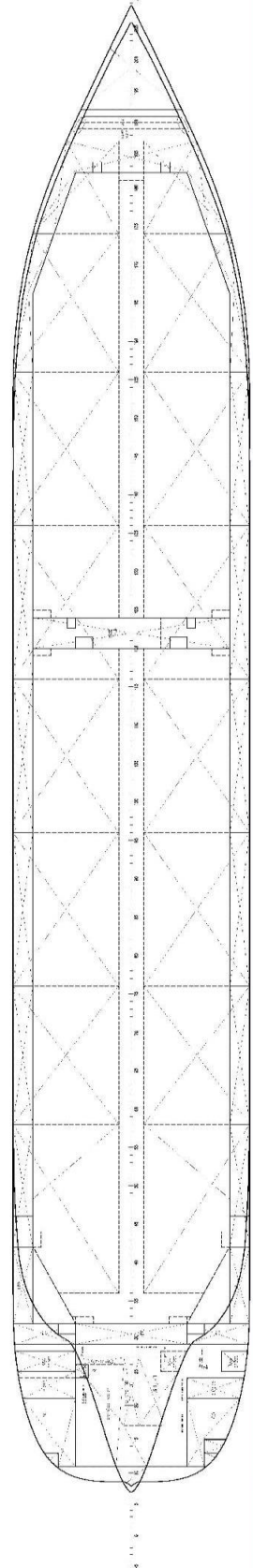
ACCOMMODATION DECK



MAIN DECK



TANKTOP



GENERAL PARTICULARS

Length: 142.000 m (Included)
 Breadth: 18.200 m (Included)
 Draught: 8.500 m (Included)
 Displacement: 5000 DWT (dead)
 Cargo Hold Volume: 700000 cuft (dead)
 Power: 3690 kW (1000)

CLASS NOTATION

Stowage: 1000000
 Code: 1 * HULL * MACH
 General Cargo Ship

D	DECK	TYPE
C	CARGO	TYPE
A	ANCHOR	TYPE
NC	NETS	TYPE

SHIPYARD FERUS SMT B.V.
 Westbroek / Leer

Address: PO Box 40000
 14200 CA Westbroek, NL
 Tel: +31 (0)522 400000
 Fax: +31 (0)522 400001
 E-mail: info@ferus.nl

GENERAL ARRANGEMENT

Scale: 1:1000 (Deck)
 1:2000 (Hull)
 1:5000 (Plan)
 Date: 2023-03-15
 Drawn: J. van der Meer
 Checked: P. van der Meer